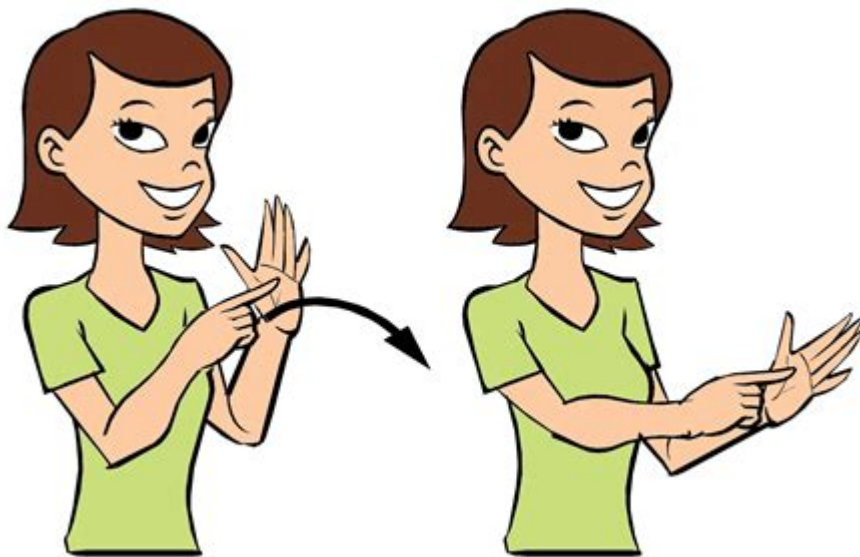


Point At Palm Sign Language



Point at palm sign language has emerged as an innovative communication method that transcends traditional verbal and written communication barriers. This unique form of sign language utilizes the palm of the hand as a canvas for expressing thoughts, ideas, and emotions. By integrating visual elements and gestures, point at palm sign language provides a rich, nuanced way to convey messages, making it an invaluable tool for both individuals with hearing impairments and those looking to enhance their communication skills.

Understanding Point at Palm Sign Language

Point at palm sign language is rooted in the principles of sign language, where gestures and movements are central to communication. By using the palm as a focal point, this form of sign language allows individuals to create visual representations of words or concepts that can be easily understood by others.

The Basics of Point at Palm Sign Language

To effectively utilize point at palm sign language, one must understand its basic components:

1. **Gestures:** These are hand movements that represent specific words or phrases. Each gesture corresponds to a particular concept, making it essential to learn the vocabulary associated with this form of sign language.
2. **Facial Expressions:** Non-verbal cues, such as facial expressions, play a crucial role in sign language. They provide context and emotional depth to the communicated message.

3. **Spatial Awareness:** The space around the individual is vital in point at palm sign language. The way gestures are performed in relation to the body and surrounding environment can change the meaning of the sign.

The Importance of Context in Interpretation

Understanding the context in which point at palm sign language is used is critical for accurate interpretation. Several factors can influence the meaning of a sign:

- **Cultural Background:** Different cultures may have variations in gestures and signs. It is important to consider cultural nuances when communicating.
- **Audience:** The person or group you are communicating with may have varying levels of familiarity with point at palm sign language. Adjusting your gestures accordingly can enhance understanding.
- **Situational Context:** The setting and circumstances can alter the meaning of a sign. For instance, a gesture that conveys a friendly greeting in one situation may be interpreted differently in another.

Learning Point at Palm Sign Language

Getting Started

For those interested in learning point at palm sign language, here are some initial steps to take:

1. **Research:** Begin by familiarizing yourself with the concepts and vocabulary associated with point at palm sign language. Numerous online resources, videos, and books can provide valuable insights.
2. **Practice Basic Signs:** Start with basic signs and gestures. Focus on mastering a few essential words before expanding your vocabulary.
3. **Join a Community:** Engage with others who are learning or are proficient in point at palm sign language. This could be through classes, workshops, or online forums.

Resources for Learning

To support your learning journey, consider utilizing the following resources:

- Books: Look for books that focus specifically on point at palm sign language or general sign language education.
- Online Courses: Many platforms offer courses that teach sign language, including point at palm techniques. These can range from beginner to advanced levels.
- YouTube Tutorials: Video tutorials provide visual demonstrations of signs and gestures, making it easier to learn and replicate.
- Apps: Mobile applications designed for learning sign language can be helpful tools for practicing and expanding your vocabulary.

Applications of Point at Palm Sign Language

Educational Settings

Point at palm sign language can be particularly beneficial in educational environments, providing students with diverse communication methods. Some applications include:

- Inclusive Classrooms: Teachers can use point at palm sign language to create an inclusive environment for students with hearing impairments, ensuring that all students have equal access to education.
- Visual Learning: The visual nature of point at palm sign language can enhance learning for all students, regardless of their hearing ability. It can aid in grasping complex concepts through visual representation.
- Interactive Activities: Incorporating point at palm sign language into group activities and discussions encourages collaboration and engagement among students.

Social Interactions

In social settings, point at palm sign language can facilitate communication and strengthen connections:

- Building Relationships: Using point at palm sign language can help bridge communication gaps, fostering stronger relationships among individuals of varying hearing abilities.
- Expressing Emotions: The ability to convey emotions through gestures and facial expressions adds depth to social interactions, allowing for more meaningful connections.

- Cultural Exchange: Point at palm sign language can serve as a tool for cultural exchange, enabling individuals from different backgrounds to communicate and share experiences.

Challenges and Considerations

While point at palm sign language offers numerous benefits, it is essential to recognize potential challenges:

Learning Curve

For many individuals, learning point at palm sign language may present a steep learning curve. Some challenges include:

- Memorization of Signs: Remembering the various gestures and their meanings can be daunting, especially for beginners.
- Facial Expression Mastery: Mastering the non-verbal cues that accompany gestures requires practice and attentiveness.

Misinterpretation Risks

Due to the visual nature of point at palm sign language, there is a risk of misinterpretation. Factors that may contribute to this include:

- Cultural Differences: Gestures may have different meanings in various cultures, leading to potential misunderstandings.
- Audience Familiarity: If the audience is not familiar with point at palm sign language, they may misinterpret signs or miss the intended message altogether.

The Future of Point at Palm Sign Language

As society becomes increasingly aware of the importance of inclusive communication, the future of point at palm sign language looks promising. Several trends may shape its evolution:

1. Integration in Technology: Advances in technology may lead to the development of tools and applications that facilitate learning and using point at palm sign language.

2. Increased Awareness: Greater awareness of the needs of individuals with hearing impairments may lead to more widespread adoption of point at palm sign language in various settings.

3. Research and Development: Ongoing research into effective teaching methods and applications of point at palm sign language can enhance its efficacy and reach.

Conclusion

Point at palm sign language represents a dynamic and effective means of communication, particularly for individuals with hearing impairments. By utilizing gestures, facial expressions, and spatial awareness, this unique form of sign language enriches interactions and fosters understanding among diverse communities. As awareness and resources continue to grow, point at palm sign language has the potential to become an integral part of inclusive communication practices, paving the way for a more connected and understanding society. Embracing and learning point at palm sign language not only empowers individuals but also cultivates a culture of empathy and inclusivity for all.

Frequently Asked Questions

What is the point at palm sign language?

Point at palm sign language is a visual communication system that involves pointing to the palm of one hand with the index finger of the other hand to convey specific meanings or messages.

How is point at palm sign language used in daily communication?

It is often used in situations where spoken language may not be effective, such as in noisy environments or among individuals who are deaf or hard of hearing, allowing for clear and direct communication.

Are there specific gestures associated with point at palm sign language?

Yes, different gestures can represent various concepts, emotions, or objects, and the meaning can change based on the context in which they are used.

Can point at palm sign language be integrated with other sign languages?

Absolutely! Point at palm can complement other sign languages by providing additional ways to express ideas or by serving as a bridge between different communication styles.

Is point at palm sign language recognized in formal education?

While it may not be as widely recognized as established sign languages like ASL, point at palm sign language can be taught and used in specific contexts, especially in special education and communication workshops.

What are some benefits of using point at palm sign language?

Benefits include enhanced clarity in communication, increased engagement in conversations, and a valuable tool for individuals with hearing impairments to express themselves effectively.

Find other PDF article:

<https://soc.up.edu.ph/18-piece/pdf?dataid=gmo88-1723&title=doc-martin-season-6-episode-guide.pdf>

Point At Palm Sign Language

“point” _

point 1 point out “, ” “The teacher pointed out the mistakes in ...

point at *point to* -

1 point at [pɔɪnt æt] [pɔɪnt æt] ... point to [pɔɪnt tu:] [pɔɪnt tu] ... 2 point to point ...

ppt _

May 7, 2024 · ppt PowerPoint 1. PowerPoint 2. “” ...

point -

point point [pɔɪnt] [pɔɪnt] n.; vt. vi. 1 I take your point (= understand and accept what you are saying)

invalid floating point operation _

Aug 16, 2024 · “invalid floating point operation” ...

ppt2 -

Mar 16, 2023 · ppt2 PPT1 PPT2 ...

Service fédéral des Pensions - SFPD

Le Service Pensions calcule et paie les pensions des salariés, indépendants et fonctionnaires, et fournit des informations sur la planification et la demande de pension.

condition case point stage w...

Jan 24, 2017 · where case condition situation position point stage
where I can think of many cases ...

NBA C PF SF SG PG _ _ _ _ _

PF power forward PG point guard C center SG shooting guard SF small forward

ppt□□□□□□□□ - □□□□

ppt: 1. ppt 2. ppt 3. ppt ...

"point"

```
point[0] = 1; point[1] = 0; // point out "x,y" coordinates of the ...
```

point at **point to** **point to** - **point to**

1 point at [point æt] [pɔɪnt æt] ...; point to [point tu:] [pɔɪnt tu] ; ...

ppt□□□□□□□□ppt□□□□□□□□_□□□□

May 7, 2024 · pptppt PowerPoint 1. ...

point□□□□ - □□□□

point 点 [point] n.; vt. 点; vi. 点 1 I take ...

```
invalid floating point operation
```

Aug 16, 2024 · 000000“invalid floating point operation”00000000000000000000000000000000 000 ...

Discover how to effectively use the point at palm sign language in communication. Enhance your skills and connect with others—learn more today!

[Back to Home](#)