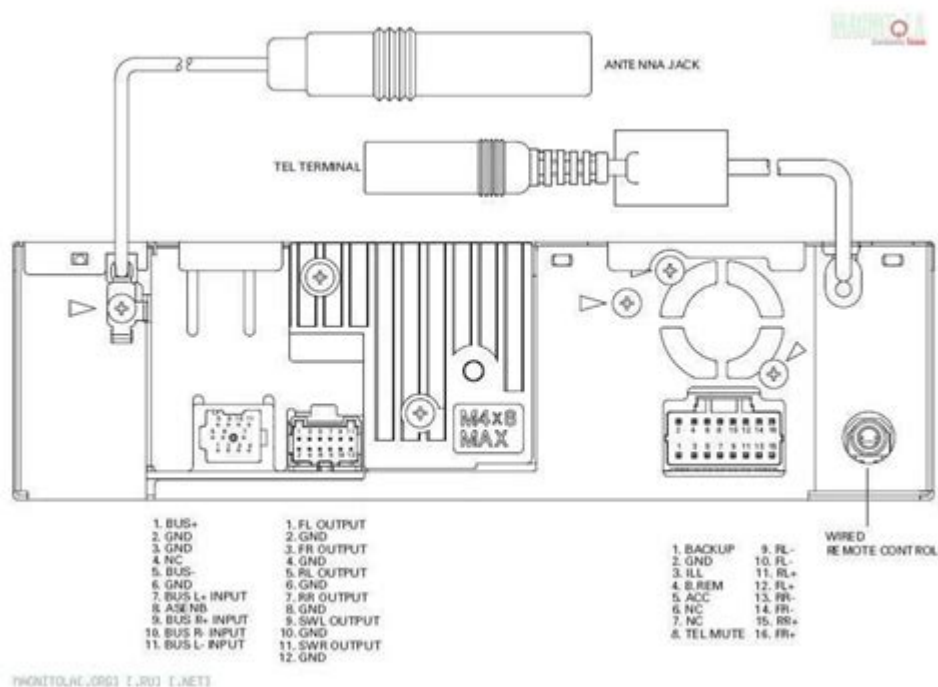


Pioneer Deh S4220bt Wiring Diagram



Pioneer DEH S4220BT Wiring Diagram is an essential guide for anyone looking to install or replace this popular car stereo model. Whether you are a novice or an experienced car audio enthusiast, understanding the wiring diagram will help you connect the unit correctly, ensuring optimal performance and functionality. In this article, we will delve into the specifics of the wiring diagram, explore the features of the Pioneer DEH S4220BT, and provide practical tips for installation.

Overview of the Pioneer DEH S4220BT

The Pioneer DEH S4220BT is a versatile and feature-rich car stereo that enhances your in-car audio experience. It offers Bluetooth connectivity, multiple media playback options, and an array of customization features. Here are some key specifications:

- Power Output: 50 Watts x 4 Channels
- Bluetooth: Hands-free calling and audio streaming
- USB Port: Compatible with USB drives for direct playback
- AM/FM Radio: Supports both AM and FM bands
- Audio Customization: Built-in equalizer with multiple presets
- Display: LED display with adjustable brightness

The wiring diagram for the DEH S4220BT will help you effectively harness these features by ensuring proper connections to your vehicle's audio system.

Understanding the Wiring Diagram

Before diving into the wiring connections, it's crucial to understand the components represented in the wiring diagram. The diagram typically includes different wire colors, functions, and their corresponding connections.

Wire Color and Function

Here's a breakdown of the standard wire colors and their respective functions for the Pioneer DEH S4220BT:

1. Yellow Wire: Constant Power Supply
2. Red Wire: Accessory Power Supply
3. Black Wire: Ground
4. Blue/White Wire: Remote Turn-On for Amplifier
5. Speaker Wires:
 - Front Left (+): Light Green
 - Front Left (-): Dark Green
 - Front Right (+): Light Gray
 - Front Right (-): Dark Gray
 - Rear Left (+): Yellow/Black
 - Rear Left (-): Yellow/Gray
 - Rear Right (+): White/Black
 - Rear Right (-): White/Gray
6. Antenna Wire: Blue
7. Illumination Wire: Orange

Understanding these wire functions is crucial for a successful installation.

Installation Process

Installing the Pioneer DEH S4220BT requires proper tools, knowledge of your vehicle's audio system, and attention to detail. Here is a step-by-step guide to help you through the installation process.

Tools and Materials Required

Before you start, gather the following tools and materials:

- Wire stripper/cutter
- Screwdriver (Phillips and flathead)
- Electrical tape
- Wire connectors (butt connectors or solder)
- Dash kit (if necessary)
- Antenna adapter (if necessary)

Step-by-Step Installation

1. Disconnect the Battery:

- Safety first! Disconnect the negative terminal of your car battery to avoid any electrical shorts or shocks.

2. Remove the Existing Stereo:

- Use a screwdriver to remove the screws holding the old stereo in place. Pull it out gently and disconnect the wiring harness.

3. Identify the Wiring Harness:

- Locate the wiring harness in your vehicle. This is typically a connector that links the factory stereo to the car's audio system.

4. Connect the Pioneer Wiring Harness:

- Using the wiring diagram, connect the wires from the Pioneer DEH S4220BT to the corresponding wires in your vehicle's harness.
- Ensure that you connect:
 - Yellow to Constant Power
 - Red to Accessory Power
 - Black to Ground
- Speaker wires to the correct channels

5. Secure the Connections:

- Use wire connectors or solder the connections and cover them with electrical tape to prevent any short circuits.

6. Mount the Stereo:

- Slide the Pioneer DEH S4220BT into the dash kit and secure it with screws. Ensure it fits snugly in place.

7. Reconnect the Battery:

- Reconnect the negative terminal of the battery.

8. Test the Stereo:

- Turn on your vehicle's ignition and power up the Pioneer stereo. Check all functions, including radio, Bluetooth, and USB playback.
- Adjust the settings to your preference.

Troubleshooting Common Installation Issues

Even with careful installation, some issues may arise. Here are common problems and their solutions:

1. No Power to the Stereo:

- Check the connections for the yellow and red wires. Ensure they are securely connected to the power source and accessory source.

2. No Sound from Speakers:

- Verify that the speaker wires are connected correctly to both the stereo and the speakers. Ensure the right polarity is observed (+ to + and - to -).

3. Bluetooth Connectivity Issues:

- Make sure Bluetooth is enabled on your device and that the stereo is in pairing mode. Reset the stereo if necessary.

4. Poor Radio Reception:

- Ensure the antenna is connected correctly. If your vehicle requires an antenna adapter, make sure it is installed.

5. Display Issues:

- If the display is too dim or not functioning, check the illumination wire connections.

Conclusion

Understanding the Pioneer DEH S4220BT wiring diagram is fundamental for anyone looking to install this car stereo model. The wiring connections are straightforward, and with the right tools and a bit of patience, you can achieve a successful installation. Always remember to power down your vehicle before starting the installation and ensure all connections are secure to avoid future issues. Enjoy the enhanced audio experience that this versatile stereo offers and drive safely!

Frequently Asked Questions

What is the Pioneer DEH-S4220BT wiring diagram used for?

The wiring diagram is used to help users connect the Pioneer DEH-S4220BT car stereo to their vehicle's audio system, ensuring proper installation and functionality.

Where can I find the wiring diagram for the Pioneer DEH-S4220BT?

The wiring diagram can typically be found in the user manual that comes with the stereo, or it can be downloaded from the official Pioneer website or various car audio forums.

What are the main wires in the Pioneer DEH-S4220BT wiring harness?

The main wires include power wires (12V constant and accessory), ground wire, speaker wires, and antenna input, each serving a specific purpose in the installation.

How do I connect the Pioneer DEH-S4220BT to my car's speakers?

To connect the DEH-S4220BT to the speakers, match each speaker wire from the stereo to the corresponding speaker wire in your vehicle, ensuring correct polarity (positive and negative).

Is it necessary to use a wiring harness adapter for the Pioneer DEH-S4220BT?

Using a wiring harness adapter is recommended as it simplifies the installation process and ensures compatibility with your vehicle's wiring without cutting factory wires.

What should I do if I lose the wiring diagram for the Pioneer DEH-S4220BT?

If you lose the wiring diagram, you can find a replacement online through Pioneer's support page or automotive audio forums, or you can contact Pioneer customer service for assistance.

Can I install the Pioneer DEH-S4220BT without a wiring diagram?

While it is technically possible to install the stereo without a wiring diagram, it is highly discouraged as it can lead to incorrect connections and potential damage to the unit or vehicle.

What tools do I need to install the Pioneer DEH-S4220BT using the wiring diagram?

You will typically need tools such as a wire stripper, crimping tool, screwdriver, and possibly a multimeter to ensure proper connections and functionality during installation.

Find other PDF article:

<https://soc.up.edu.ph/54-tone/Book?trackid=xxK16-8001&title=social-and-behavioral-studies.pdf>

Pioneer Deh S4220bt Wiring Diagram

Pioneer India | Your trusted choice for high-quality Car Stereos, ...

Pioneer India offers Car Audio products including car dash cameras, in-car GPS navigation, Android Auto Enabled Stereo, Apple Car Play enabled stereo headunit, iphone car stereo, car ...

PIONEER | English meaning - Cambridge Dictionary

PIONEER definition: 1. a person who is one of the first people to do something: 2. a person who goes to an area and.... Learn more.

Pioneer India - Car Entertainment | Best In-Car entertainment ...

Pioneer Car Entertainment Best In-Car entertainment products for your unlimited entertainment.

Pioneer India - VREC-Z820DC | The VREC-Z820DC offers 4K ...

The VREC-Z820DC offers 4K video recording for ultra-clear footage and WDR for excellent quality in varying light. With AI safety features & ADAS warnings, its complete Hi-Tech solution for ...

PIONEER (車載) - Cambridge Dictionary

PIONEER (車載) (車載), (車載), (車載)

Pioneer to Begin Manufacturing In-Car Products in India

Mar 28, 2025 · Pioneer considers India as one of its high-priority markets outside Japan. The start of local production of in-car products, in collaboration with local contractors, will enable us to ...

[Pioneer India - VREC-H520DC | Car Dashboard Camera with 2K ...](#)

Car Dashboard Camera with 2K Video resolution, ADAS enabled, High Dynamic Range, 140° Field of View with in-built GPS, Wi-Fi and G-sensor, Emergency Recording, Supports up to ...

Pioneer Car Stereos

Car Stereos - Best in class car stereo systems with wide range of features | Pioneer India

[Pioneer India - MVH-S239BT | Digital Media Receiver with Built-in ...](#)

Buy Pioneer MVH-S239BT (Car Stereos) with features like Digital Media Receiver with Built-in Bluetooth, and direct Control for Certain Android Phones, Powerful Sound (Direct Access ...

[About Us - Pioneer India](#)

About Pioneer Pioneer India Electronics Pvt Ltd Pioneer India is the Indian Subsidiary of Pioneer Corporation, Japan. Incorporated in 2008, Pioneer India's core business covers the car audio ...

Pioneer India | Your trusted choice for high-quality Car Stereos, ...

Pioneer India offers Car Audio products including car dash cameras, in-car GPS navigation, Android Auto Enabled Stereo, Apple Car Play enabled stereo headunit, iphone car stereo, car ...

PIONEER | English meaning - Cambridge Dictionary

PIONEER definition: 1. a person who is one of the first people to do something: 2. a person who goes to an area and.... Learn more.

[Pioneer India - Car Entertainment | Best In-Car entertainment ...](#)

Pioneer Car Entertainment Best In-Car entertainment products for your unlimited entertainment.

[Pioneer India - VREC-Z820DC | The VREC-Z820DC offers 4K video ...](#)

The VREC-Z820DC offers 4K video recording for ultra-clear footage and WDR for excellent quality in varying light. With AI safety features & ADAS warnings, its complete Hi-Tech solution ...

PIONEER (パイオニア) - Cambridge Dictionary

PIONEER (パイオニア), パイオニア, パイオニア

[Pioneer to Begin Manufacturing In-Car Products in India](#)

Mar 28, 2025 · Pioneer considers India as one of its high-priority markets outside Japan. The start of local production of in-car products, in collaboration with local contractors, will enable us to ...

[Pioneer India - VREC-H520DC | Car Dashboard Camera with 2K ...](#)

Car Dashboard Camera with 2K Video resolution, ADAS enabled, High Dynamic Range, 140° Field of View with in-built GPS, Wi-Fi and G-sensor, Emergency Recording, Supports up to ...

Pioneer Car Stereos

Car Stereos - Best in class car stereo systems with wide range of features | Pioneer India

[Pioneer India - MVH-S239BT | Digital Media Receiver with Built-in ...](#)

Buy Pioneer MVH-S239BT (Car Stereos) with features like Digital Media Receiver with Built-in Bluetooth, and direct Control for Certain Android Phones, Powerful Sound (Direct Access ...

[About Us - Pioneer India](#)

About Pioneer Pioneer India Electronics Pvt Ltd Pioneer India is the Indian Subsidiary of Pioneer Corporation, Japan. Incorporated in 2008, Pioneer India's core business covers the car audio ...

Discover the complete Pioneer DEH S4220BT wiring diagram for easy installation. Get step-by-step guidance and tips for a hassle-free setup. Learn more!

[Back to Home](#)