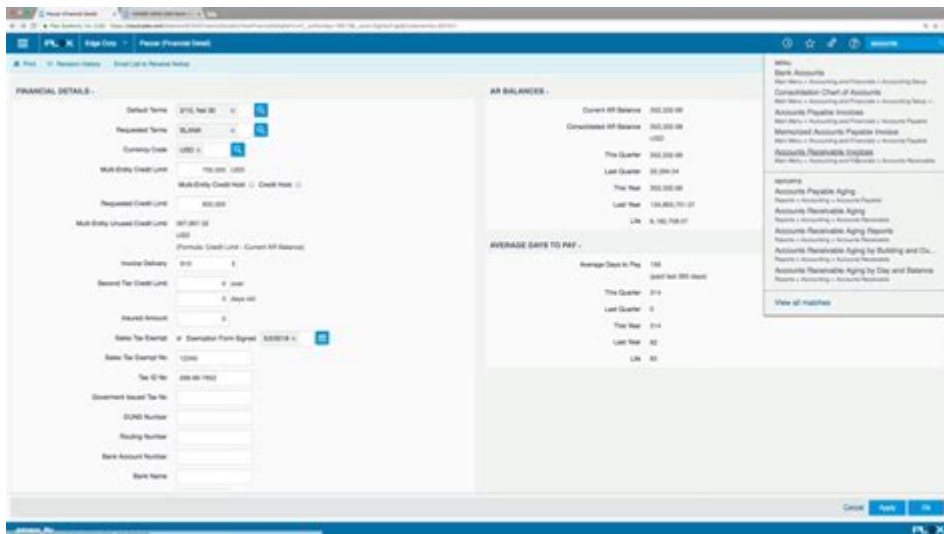


Plex Erp User Manual



Plex ERP User Manual

Plex ERP is an advanced enterprise resource planning software specifically designed for manufacturers in various industries. It streamlines processes, enhances visibility, and increases efficiency across operations, from inventory management to production scheduling. This user manual serves as a guide for new users to navigate the Plex ERP system effectively, providing insights into its features, functionalities, and best practices for utilization.

Understanding Plex ERP

Plex ERP is a cloud-based solution, which means that users can access it from any location with an internet connection. Its architecture is built to cater to the specific needs of manufacturers, offering modules that handle everything from supply chain management to quality control. The main components of Plex ERP include:

- Manufacturing Execution System (MES): Real-time data on production processes.
- Supply Chain Management (SCM): Tools for managing suppliers and logistics.
- Quality Management: Ensures that products meet specified standards.

- Financial Management: Manages budgeting, accounting, and financial reporting.
- Inventory Management: Tracks materials and finished goods.

Key Features of Plex ERP

Plex ERP stands out due to its rich feature set, which includes:

1. Real-time Data Access: Users can view current production status, inventory levels, and order statuses in real time.
2. Customizable Dashboards: Users can tailor dashboards to show the most relevant metrics for their roles.
3. Mobile Access: The platform is accessible via mobile devices, allowing for on-the-go management.
4. Integration Capabilities: Plex ERP can integrate with various third-party applications, enhancing its functionality.
5. Robust Reporting Tools: Users can generate detailed reports to analyze performance and make informed decisions.

Getting Started with Plex ERP

To begin using Plex ERP, you must first log in to the system. Below are the steps to access your account:

Logging In

1. Open your web browser and navigate to the Plex ERP login page.
2. Enter your username and password.
3. Click the "Log In" button.

4. If you have forgotten your password, click the "Forgot Password?" link to initiate a reset.

User Interface Overview

After logging in, you will be greeted by the Plex ERP dashboard. The interface is designed for ease of use, with the following key components:

- Navigation Menu: Located on the left side, this menu allows access to different modules (e.g., Production, Inventory, Quality).
- Main Workspace: The central area where detailed information and tasks are displayed.
- Notifications: Alerts and updates related to your activities and system changes.

Key Modules and Their Functions

Plex ERP consists of various modules, each serving a unique purpose. Understanding these modules is crucial for maximizing the software's capabilities.

1. Production Management

The Production Management module allows users to schedule jobs, track work orders, and monitor production efficiency. Key features include:

- Work Order Creation: Easily create and manage work orders based on demand.
- Scheduling Tools: Optimize production schedules with integrated tools.
- Performance Tracking: Monitor machine and labor performance in real time.

2. Inventory Management

This module helps manage raw materials and finished goods effectively. Important functions include:

- Inventory Tracking: Real-time tracking of inventory levels and locations.
- Reorder Alerts: Notifications when stock levels fall below predefined thresholds.
- Cycle Counting: Streamlined processes for counting inventory without disrupting operations.

3. Quality Management

Quality Management ensures products meet industry standards through:

- Quality Inspections: Schedule and document inspections throughout the production process.
- Non-Conformance Reporting: Track and manage defects or non-conformances.
- Compliance Management: Ensure adherence to regulatory standards.

4. Financial Management

This module aids in managing financial transactions and reporting. Core components include:

- Budgeting Tools: Create and manage budgets effectively.
- Accounts Payable/Receivable: Streamlined management of invoices and payments.
- Financial Reporting: Generate reports for analysis and decision-making.

Best Practices for Using Plex ERP

Maximizing the benefits of Plex ERP requires adhering to best practices. Here are some tips to

enhance your experience:

1. Regular Training

Engage in ongoing training sessions to stay updated on new features and best practices. Utilize resources such as:

- Webinars: Participate in live training sessions.
- User Guides: Access the comprehensive documentation available in the Plex ERP help center.

2. Customize Your Dashboard

Tailor your dashboard to focus on the metrics most relevant to your role. Consider these customizations:

- Add widgets for key performance indicators (KPIs).
- Organize your workspace for quick access to frequently used functions.

3. Leverage Reporting Tools

Utilize the reporting capabilities to gain insights into your operations. Regularly generate reports to:

- Analyze production efficiency.
- Assess inventory turnover rates.
- Review financial performance.

4. Collaborate with Your Team

Plex ERP supports collaborative work. Foster communication among team members by:

- Using shared dashboards to track group performance.
- Establishing protocols for updating project statuses.

Troubleshooting Common Issues

While Plex ERP is designed for ease of use, users may encounter issues. Below are some common problems and their solutions:

1. Login Issues

If you cannot log in:

- Double-check your username and password for accuracy.
- Clear your browser's cache and try again.
- If the issue persists, contact your system administrator.

2. Slow Performance

If the system is running slowly:

- Check your internet connection for stability.
- Clear your browser's cache and cookies.
- Log out and log back into the system.

3. Data Discrepancies

If you notice discrepancies in data:

- Verify that all entries are up to date and accurately recorded.
- Review any recent changes made by your team.
- If discrepancies persist, escalate the issue to your IT department.

Conclusion

Plex ERP is a powerful tool for manufacturers looking to streamline their operations and enhance productivity. By following the guidelines outlined in this user manual, new users can quickly acclimate to the system and leverage its features to improve their workflows. Regular training, customization, effective collaboration, and proactive troubleshooting are essential to unlocking the full potential of Plex ERP. Embrace the power of this platform to drive efficiency and success in your manufacturing processes.

Frequently Asked Questions

What is the purpose of the Plex ERP user manual?

The Plex ERP user manual serves as a comprehensive guide for users to understand the features, functionalities, and best practices for utilizing the Plex ERP system effectively.

Where can I find the latest version of the Plex ERP user manual?

The latest version of the Plex ERP user manual can typically be found on the official Plex website in the support or documentation section, or through the Plex user community.

Does the Plex ERP user manual include troubleshooting tips?

Yes, the Plex ERP user manual often includes troubleshooting tips along with step-by-step instructions to help users resolve common issues they may encounter while using the system.

Is there a section in the Plex ERP user manual dedicated to new features?

Yes, the Plex ERP user manual generally includes a section for new features, highlighting updates and enhancements in the latest software versions to help users stay informed.

Can I access the Plex ERP user manual in multiple languages?

Yes, the Plex ERP user manual is often available in multiple languages to accommodate the diverse user base, although the availability of languages may vary.

How often is the Plex ERP user manual updated?

The Plex ERP user manual is typically updated regularly, especially after major software releases or updates, to ensure it reflects the most current information and features.

Find other PDF article:

<https://soc.up.edu.ph/44-slide/pdf?ID=SZp69-2022&title=nys-regents-global-history.pdf>

[Plex Erp User Manual](#)

Plex Media Server will not open or run

Dec 5, 2024 · Plex Media Server.1.log (2.4 KB) Unable to get media server working on my new computer. Done multiple uninstalls, changed install directory, etc... Attached the log that ...

TV Show not showing up - Plex Media Server - Plex Forum

May 18, 2021 · Server Version#: 4.56.4 Player Version#: N/A Hello! I recently noticed that some of my TV shows were not showing up in the libraries. I'm trying to figure out one specific case that ...

An important Watch Together change - Plex Forum

Feb 24, 2025 · It was the year 2020. Life had gotten very different, very fast. Then, at the request of

a fan named Joe, Plex Labs quickly put in some long hours creating a way for the world to ...

HEVC Encoding (Experimental) Public Release - Plex Forum

Jan 21, 2025 · We are happy to announce a public version of the new HEVC transcoder. Note this is still considered experimental. Thank you to all the users that helped test this while in preview ...

EAC3 audio not working in windows 11 (fix provided) - Plex Forum

May 11, 2025 · I had some videos that played without sound and almost deleted them, then decided to see how it ran through my TV and it worked perfectly, (server is synology linux, I'm ...

How to access the Plex Experience Preview (Android mobile, iOS, ...

Nov 11, 2024 · Android (mobile) To access Plex Experience Preview for mobile Android devices, you first need to have your Google Play account "opt in" to test the preview app. This is done ...

Using Plex TV Series Agent for Anime

Feb 23, 2025 · Dynamic Alternate orders As of Plex Media Server version 1.40.4 (and when using the Plex TV Series agent), it is possible to set the appropriate episode order for a TV series ...

Plex Forum

Plex Forum ... Plex Forums

Introducing Reviews for Movies & Shows! - Plex Forum

Today we're excited to launch Reviews! Any registered Plex account can now review any Movie, Show, Season, or Episode. You can also optionally flag your reviews as containing spoilers to ...

Plex for Mobile (Android & iOS) - Announcements - Plex Forum

Mar 31, 2025 · Plex for Android 2025.10.1 (Google Play) Plex for iOS 2025.10.1 (App Store) NOTE: We are performing a staged rollout. This initial release will go out to users over the ...

Plex Media Server will not open or run

Dec 5, 2024 · Plex Media Server.1.log (2.4 KB) Unable to get media server working on my new computer. Done multiple uninstalls, changed install directory, etc... Attached the log that ...

TV Show not showing up - Plex Media Server - Plex Forum

May 18, 2021 · Server Version#: 4.56.4 Player Version#: N/A Hello! I recently noticed that some of my TV shows were not showing up in the libraries. I'm trying to figure out one specific case ...

An important Watch Together change - Plex Forum

Feb 24, 2025 · It was the year 2020. Life had gotten very different, very fast. Then, at the request of a fan named Joe, Plex Labs quickly put in some long hours creating a way for the world to ...

HEVC Encoding (Experimental) Public Release - Plex Forum

Jan 21, 2025 · We are happy to announce a public version of the new HEVC transcoder. Note this is still considered experimental. Thank you to all the users that helped test this while in ...

EAC3 audio not working in windows 11 (fix provided) - Plex Forum

May 11, 2025 · I had some videos that played without sound and almost deleted them, then decided to see how it ran through my TV and it worked perfectly, (server is synology linux, I'm ...

How to access the Plex Experience Preview (Android mobile, iOS, ...

Nov 11, 2024 · Android (mobile) To access Plex Experience Preview for mobile Android devices, you

first need to have your Google Play account “opt in” to test the preview app. This is done ...

Using Plex TV Series Agent for Anime

Feb 23, 2025 · Dynamic Alternate orders As of Plex Media Server version 1.40.4 (and when using the Plex TV Series agent), it is possible to set the appropriate episode order for a TV series ...

Plex Forum

Plex Forum ... Plex Forums

Introducing Reviews for Movies & Shows! - Plex Forum

Today we're excited to launch Reviews! Any registered Plex account can now review any Movie, Show, Season, or Episode. You can also optionally flag your reviews as containing spoilers to ...

Plex for Mobile (Android & iOS) - Announcements - Plex Forum

Mar 31, 2025 · Plex for Android 2025.10.1 (Google Play) Plex for iOS 2025.10.1 (App Store) NOTE: We are performing a staged rollout. This initial release will go out to users over the ...

Unlock the full potential of your Plex ERP with our comprehensive user manual. Discover how to optimize features and streamline your operations. Learn more!

[Back to Home](#)