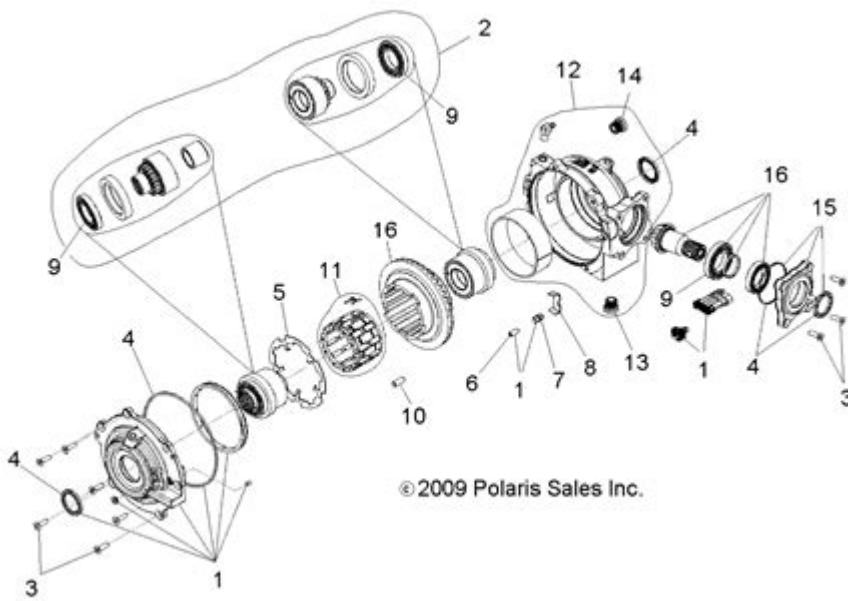


# Polaris RZR Front Differential Parts Diagram



**Polaris RZR front differential parts diagram** is essential for understanding the inner workings of this important component of your Polaris RZR vehicle. The front differential plays a crucial role in delivering power to the front wheels, allowing for improved traction and handling in various terrains. This article will delve into the various parts of the front differential, their functions, and how to interpret a parts diagram for better maintenance and repair of your Polaris RZR.

## Understanding the Front Differential

The front differential is a vital part of the drivetrain in a Polaris RZR. It enables the vehicle to navigate rough terrains by allowing the front wheels to rotate at different speeds, especially during turns. This functionality is crucial for maintaining traction and stability.

## Key Functions of the Front Differential

The front differential serves several important functions, including:

1. **Power Distribution:** It distributes engine power to the front wheels, enhancing vehicle performance.
2. **Torque Splitting:** It allows the front wheels to rotate at different speeds, which is essential when navigating corners.
3. **Traction Improvement:** By enabling individual wheel movement, it improves traction on uneven surfaces.

# Components of the Polaris RZR Front Differential

The front differential consists of several parts, each playing a unique role in its overall function. Understanding these components is imperative for proper maintenance and troubleshooting. Below is a list of the primary parts included in the Polaris RZR front differential:

- **Ring Gear**
- **Pinion Gear**
- **Differential Case**
- **Spider Gears**
- **Side Gears**
- **Bearing Assemblies**
- **Seals and Gaskets**
- **Housing**

## Detailed Explanation of Differential Parts

1. **Ring Gear:** This large gear is attached to the differential case and engages with the pinion gear to transmit power from the driveshaft.
2. **Pinion Gear:** The pinion gear connects to the driveshaft and meshes with the ring gear, facilitating power transfer.
3. **Differential Case:** The case houses the gears and protects them from debris and damage. It also helps in maintaining lubrication.
4. **Spider Gears:** These small gears are located within the differential case and allow for the independent rotation of the wheels.
5. **Side Gears:** Connected to the axle shafts, these gears work in conjunction with the spider gears to allow wheel slip during turns.
6. **Bearing Assemblies:** These bearings support the rotating components, reducing friction and wear.
7. **Seals and Gaskets:** Essential for preventing fluid leaks, they ensure that the differential remains lubricated.
8. **Housing:** The outer shell that encases the differential, protecting its internal components.

# Polaris RZR Front Differential Parts Diagram

Having a parts diagram is invaluable when working on the front differential of your Polaris RZR. It provides a visual representation of each component, making it easier to identify parts when performing maintenance or repairs.

## How to Read the Parts Diagram

When you look at a Polaris RZR front differential parts diagram, keep the following tips in mind:

1. **Labeling:** Each part will typically be labeled with a corresponding number or letter. This makes it easier to cross-reference with a parts list.
2. **Orientation:** Pay attention to how the parts are oriented in the diagram. This can help you understand how they fit together in real life.
3. **Connection Points:** Notice where parts connect. Understanding these connections is crucial for successful assembly and disassembly.
4. **Assembly Order:** If you're replacing components, the diagram can often provide hints about the order in which parts should be assembled or disassembled.

## Common Issues with the Front Differential

The front differential is subject to wear and tear, especially in off-road conditions. Here are some common issues that can occur:

1. **Fluid Leaks:** Worn seals or gaskets can lead to leaks, which can compromise lubrication and lead to further damage.
2. **Worn Gears:** Prolonged use or lack of maintenance can result in worn gears, leading to poor performance or failure.
3. **Noise:** Unusual noises during operation can indicate issues with bearings or gears, requiring immediate attention.
4. **Overheating:** Insufficient lubrication can cause overheating, potentially damaging the differential.

## Preventive Maintenance Tips

Regular maintenance is essential for keeping your front differential in good working order. Here are some tips to consider:

1. **Regular Inspections:** Check for leaks, cracks, or unusual wear on the differential housing and

components.

2. **Fluid Changes:** Change the differential fluid as recommended by Polaris, typically every 1,000 miles or annually, depending on usage.
3. **Seal Replacement:** Replace worn seals and gaskets to prevent leaks and maintain lubrication.
4. **Listen for Changes:** Be attentive to any changes in noise or handling; these can be early signs of differential problems.
5. **Consult the Manual:** Always refer to your owner's manual for specific maintenance guidelines and intervals for your Polaris RZR model.

## When to Seek Professional Help

While many RZR owners can handle basic maintenance and repairs, some issues may require professional assistance. Consider seeking help when:

1. **Complex Repairs:** If you encounter significant damage to gears or bearings, professional expertise may be necessary.
2. **Specialized Tools:** Some differential repairs require specialized tools that the average owner may not possess.
3. **Time Constraints:** If you lack the time to perform thorough repairs or maintenance, it may be worth hiring a professional.
4. **Warranty Considerations:** If your vehicle is still under warranty, attempting major repairs yourself may void that warranty.

## Conclusion

Understanding the **Polaris RZR front differential parts diagram** and the components involved is crucial for any RZR owner who wants to maintain their vehicle's performance and longevity. By familiarizing yourself with the parts, their functions, and common issues, as well as implementing preventive maintenance, you can ensure that your front differential remains in optimal condition. Whether you choose to tackle repairs yourself or seek professional help, a solid understanding of this critical component will enhance your ownership experience and keep your Polaris RZR running smoothly on any terrain.

## Frequently Asked Questions

## **What is a Polaris RZR front differential parts diagram?**

A Polaris RZR front differential parts diagram is a visual representation that illustrates the various components and their arrangement within the front differential assembly of Polaris RZR vehicles.

## **Where can I find a Polaris RZR front differential parts diagram?**

You can find a Polaris RZR front differential parts diagram in the vehicle's service manual, online on Polaris's official website, or through ATV parts retailers.

## **What are the main components shown in the Polaris RZR front differential parts diagram?**

The main components typically include the differential case, ring gear, pinion gear, side gears, spider gears, bearings, seals, and mounting hardware.

## **Why is it important to understand the front differential parts diagram?**

Understanding the front differential parts diagram is crucial for diagnosing issues, performing maintenance, or replacing parts efficiently in your Polaris RZR.

## **Can I use a parts diagram for different models of Polaris RZR?**

No, it's important to use the specific parts diagram for your RZR model, as components may vary significantly between different models and years.

## **How can I identify a faulty part in the front differential using the diagram?**

By comparing the parts diagram to the physical components and looking for wear, damage, or misalignment, you can identify faulty parts that need replacement.

## **What tools do I need to work on the front differential parts as shown in the diagram?**

You typically need basic hand tools like wrenches, sockets, screwdrivers, and possibly specialty tools for specific components, as indicated in the service manual.

## **Is it safe to operate a Polaris RZR with a damaged front differential?**

No, operating a Polaris RZR with a damaged front differential can lead to further mechanical failures and compromise safety. It's advisable to repair or replace damaged parts immediately.

## **How often should I inspect the front differential components**



May 30, 2020 · [XXXXXXXXXXXXXXXXXXXXXXXXXXXXX? XXXXXXXXXXX BMTH,Polaris,WSS, kingdom of gaint, emmure, life awaits, immi... XXXX XXX 30 XXX](#)

Mar 22, 2020 · [Polaris Office for Mac](#) [App Store](#) [google drive](#) [hwp](#) [PDF](#) [pdf](#) [pdftoword.55.la/](#) [word](#) [pages](#)

0000 0000v9.103.88 PolarisOfficeSetup.exe / 186MB 00 0000: 2021-08-12 0000 000 0000 0 0000 00 00  
 000000 0000 Polaris Office Corp OS 000, 0, 00000, 000 00 00 000, 000, 00, 000, 0000, 0000 0000 00 00 00  
 0 0 000 256MB ...

Team-BHP takes ZERO advertising money from the auto industry, hence provides the most trusted, detailed and unbiased Car Reviews & News in India.

Polaris? Polaris Polaris Polaris?

14

2011 年 1 月 ...

Xubuntu linux bluepoint redhat centos windows linux CentOS7 linux WPS ms office ...

Jul 11, 2011 · Hi Guys, I have been recently seeing teaser advertisements ( on cricket channels) of Polaris 4x4 vehicles to be sold in India. These 4x4 2 seaters have the potential to open some an interesting

2020 2020.zip / 1.1GB 2022-09-07 2020 2020 HWP 2020 2020 2020  
 Windows 7 / 8 / 10 / 11 2020 2020 2020 2020.zip (1.1GB) 2020 2020 2020 2020 512MB 2020  
 2020 2020 2020 2020 ...

AMD RX 590 GME 12nm GCN4.0 12nm ...

May 30, 2020 · [XXXXXXXXXXXXXXXXXXXXXXXXXXXXX? XXXXXXXXXXX BMTH,Polaris,WSS, kingdom of gaint, emmure, life awaits, immi... XXXX XXX 30 XXX](#)

Mar 22, 2020 · [Polaris Office for Mac](#) [App Store](#)

google drive hwp PDF PDF pdfword.55.la/ word  
pages

Explore our detailed Polaris RZR front differential parts diagram to understand your vehicle better. Learn more about essential components and upgrades today!

[Back to Home](#)