

Pleasant Hearth Gas Fireplace Remote Instructions

HEAT&GLO

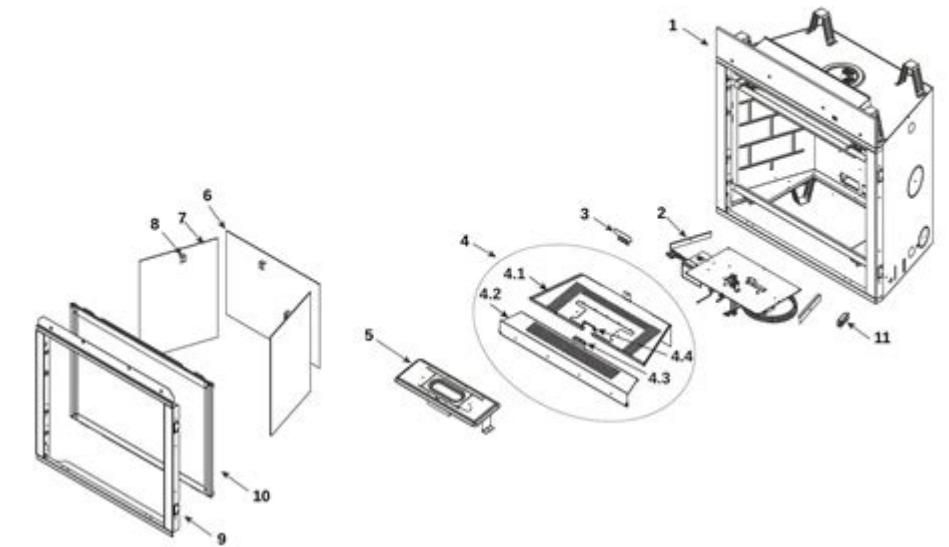
No one builds a better fire

Service Parts

42" Gas Fireplace - DV

8000CMOD-IPI

Beginning Manufacturing Date: Aug 2010
Ending Manufacturing Date: Active



IMPORTANT: THIS IS DATED INFORMATION. When requesting service or replacement parts for your appliance please provide model number and serial number. All parts listed in this manual may be ordered from an authorized dealer.

ITEM	DESCRIPTION	COMMENTS	PART NUMBER	Stocked at Depot
1	Non-Combustible Board		2170-136	
2	Refractory Bracket	Qty 2 req	2241-115	
3	Rock Fixture Assembly		2241-040	Y
4	Base Pan Assembly		2242-015	
4	Base Pan Back		2242-114	
4	Base Pan Front		2242-101	
4	Pilot Hood		2241-117	
4	Pilot Shield	Stainless	2241-116	
5	Burner Assembly	NG	2242-007	Y
		LP	2242-008	Y
6	Glass Refractory, Back		2242-200	
7	Glass Refractory, Sides	Qty 2 req	2242-201	
8	Glass Retainer Clips	Pkg of 25	060-235-25	Y
9	Surround Assembly		2170-019	
10	Glass Assembly		GLA-950TR	Y
11	Junction box		4021-013	Y

Pleasant Hearth gas fireplace remote instructions are essential for anyone looking to operate their gas fireplace efficiently and safely. A remote control adds convenience to your fireplace experience, allowing you to adjust the flames, turn the fireplace on or off, and control the heat without needing to leave your seat. In this article, we will provide comprehensive instructions on how to use your Pleasant Hearth gas fireplace remote, explain the common features, troubleshooting tips, and maintenance suggestions to ensure your fireplace remains in excellent working condition.

Understanding Your Pleasant Hearth Gas Fireplace Remote

Before diving into the instructions, it's crucial to familiarize yourself with the components of your remote and fireplace. Most Pleasant Hearth gas fireplaces include a remote that operates through radio frequency (RF) or infrared (IR) signals.

Components of the Remote

Your remote typically features the following buttons:

- **On/Off Button:** This button turns the fireplace on or off.
- **Flame Height Control:** Adjusts the intensity of the flames, allowing you to create the desired ambiance.
- **Thermostat Setting:** Some remotes include a thermostat that helps maintain a specific temperature.
- **Timer Function:** This feature allows you to set a timer for automatic shut-off.

Operating Your Gas Fireplace Remote

Using your Pleasant Hearth gas fireplace remote is straightforward, but it's essential to follow the proper steps to ensure safe and effective operation.

Initial Setup

1. Insert Batteries:

- Open the battery compartment on the back of your remote.
- Insert the correct type and number of batteries, ensuring they are oriented correctly according to the polarity indicators.

2. Power the Fireplace:

- Locate the main power switch on your gas fireplace. Make sure it is turned on.

3. Pairing the Remote (if necessary):

- Some models require you to pair the remote with the fireplace. Check your user manual for specific instructions on how to do this, as pairing methods can vary.

Using the Remote

1. Turn On the Fireplace:

- Press the On button on your remote. You should hear the igniter click, and the flames will appear after a few moments.

2. Adjusting Flame Height:

- Use the flame height control buttons to increase or decrease the flame intensity to your preference.

3. Setting the Thermostat:

- If your remote has a thermostat feature, set your desired temperature using the corresponding buttons. The fireplace will automatically adjust the flame to maintain this temperature.

4. Using the Timer:

- To set a timer, press the timer button and select your desired shut-off time. The fireplace will automatically turn off after the set duration.

5. Turning Off the Fireplace:

- When you're finished enjoying your fireplace, press the Off button to extinguish the flames.

Troubleshooting Common Issues

While operating your Pleasant Hearth gas fireplace remote is generally trouble-free, you may encounter some common issues. Here are some troubleshooting tips to help resolve these problems.

Remote Not Responding

- Check the Batteries: Ensure the batteries are fresh and correctly installed.
- Ensure Line of Sight: If using an IR remote, make sure there are no obstructions between the remote and the fireplace.
- Re-pair the Remote: If the remote has become unpaired, follow the pairing instructions in the manual.

Flames Not Igniting

- Check Gas Supply: Ensure that the gas supply to the fireplace is on.
- Pilot Light: If your fireplace has a pilot light, check if it is lit. If not, follow the lighting instructions in your manual.
- Remote Functionality: Test the remote with a different setting to see if it responds correctly.

Maintaining Your Gas Fireplace and Remote

Regular maintenance of your Pleasant Hearth gas fireplace will ensure it operates safely and efficiently.

Monthly Maintenance Tasks

- Check the Remote Batteries: Replace batteries as needed to avoid operational issues.
- Clean the Remote: Wipe down the remote with a damp cloth to keep it clean and functional.

Annual Maintenance Tasks

- Inspect the Fireplace: Have a professional inspect your gas fireplace annually to ensure it is in good working condition. This includes checking for gas leaks, inspecting the venting system, and ensuring all components function correctly.
- Clean the Burners and Logs: Remove any debris or soot that may accumulate on the burners and logs. This helps maintain efficient burning and optimal flame appearance.

Safety Precautions

Operating a gas fireplace requires adherence to safety protocols to prevent accidents and ensure a safe environment.

General Safety Tips

- Read the Manual: Always refer to the manufacturer's manual for specific safety guidelines related to your model.
- Ventilation: Ensure proper ventilation in the room where the fireplace is located.
- Check for Gas Leaks: Regularly check for gas leaks using a mixture of soap and water on gas connections. If you detect bubbles, turn off the gas and contact a professional.
- Keep Away from Flammable Materials: Ensure that no flammable materials are within three feet of the fireplace.

Conclusion

Understanding the **Pleasant Hearth gas fireplace remote instructions** is vital for safe, effective, and enjoyable use of your gas fireplace. By following the steps outlined in this article, you can operate your fireplace with confidence, troubleshoot common issues, perform regular maintenance, and adhere to safety precautions. Enjoy the warmth and ambiance that a Pleasant Hearth gas fireplace brings to your home!

Frequently Asked Questions

How do I turn on my Pleasant Hearth gas fireplace using the remote?

To turn on your Pleasant Hearth gas fireplace, make sure the remote is within range and press the 'On' button. Ensure that the gas supply is turned on before doing this.

What should I do if my Pleasant Hearth gas fireplace remote is not working?

First, check the batteries in the remote and replace them if necessary. If that doesn't work, ensure the fireplace is receiving power and that the remote is paired with the unit.

Can I adjust the flame height using the Pleasant Hearth gas fireplace remote?

Yes, most Pleasant Hearth remotes have a flame adjustment button that allows you to increase or decrease the flame height according to your preference.

How do I set the timer function on my Pleasant Hearth gas fireplace remote?

To set the timer, press the 'Timer' button on your remote and select the desired time using the '+' and '-' buttons. Confirm your selection to activate the timer.

Where can I find the user manual for my Pleasant Hearth gas fireplace remote?

The user manual can typically be found on the Pleasant Hearth website under the 'Support' or 'Downloads' section. You can also check the documentation that came with your fireplace.

Is there a safety feature on the Pleasant Hearth gas fireplace remote?

Yes, the remote comes with a safety lock feature to prevent accidental operation. Refer to the manual for instructions on how to activate or deactivate this feature.

How do I change the batteries in my Pleasant Hearth gas fireplace remote?

To change the batteries, locate the battery compartment on the back of the remote, remove the cover, replace the old batteries with new ones, and close the compartment securely.

What types of batteries does the Pleasant Hearth gas

fireplace remote require?

The remote typically requires AA or AAA batteries, depending on the model. Check your user manual for the exact specifications.

Can I use my Pleasant Hearth gas fireplace remote for multiple units?

Most Pleasant Hearth remotes are designed for a single unit. If you have multiple fireplaces, you may need separate remotes or a compatible universal remote.

Find other PDF article:

<https://soc.up.edu.ph/18-piece/files?dataid=NDZ43-4366&title=dr-oz-detox-diet-48-hours.pdf>

Pleasant Hearth Gas Fireplace Remote Instructions

pleasant□□□□ □□□□

Apr 13, 2014 · It is pleasant for us to meet you. 2. What a pleasant girl! Even when he was being pleasant, his eyes never smiled. ...

pleasing / pleasant - WordReference Forums

Aug 7, 2008 · 1. pleasing smile Vs pleasant smile; 2. pleasing news Vs Pleasant smile Are they all correct? What is the different between the phrases in each group ? Many many thanks in ...

please, pleasure, pleasant, pleased □□□ □□□□

please, pleasure, pleasant, pleased 1 pleasant “, ”, :

We spent a very pleasant evening ...

pleasant□□□□□□□□ □□□□

2 The hotel staff greeted us with pleasant smiles and excellent service. It was a pleasant surprise to receive a handwritten letter from ...

pleasant - *pleased* - *pleasure*

```

pleasant[]pleased[]1[]pleasant[]pleased[]“[]”[]1[]pleasant []
[]pleasant[] ...

```

please, pleasant, pleased plaeasure □ □ □ □ □ □ □ □

[illegible]

pleasant - pleased - please

Jun 19, 2015 · pleased, pleasant, pleasing, pleasure 1)pleased,pleasant,pleasing,pleasure
pleased+with,be pleased with,be pleased with,be ...

pleasant and useful - WordReference Forums

Oct 11, 2006 · Hello, is there an expression in English "combine the pleasant and the useful"? (Like "I play tennis in the weekends. Thus I combine the pleasant and the useful: have fun and ...

Pleasant vs Nice, which is more positive? - WordReference Forums

Oct 3, 2013 · I know it is splitting hairs but which is more positive in this sentence? Thank you for this pleasant/nice evening. // Calle

What word should I use to describe a pleasant "aftertaste"?

May 23, 2019 · As for pleasant, I was confused by my dictionary at first but then I noticed that Collins Advanced Learning Dictionary (2017 edition) had deleted "usually unpleasant" while ...

pleasant 形容词, 形容词

Apr 13, 2014 · It is pleasant for us to meet you. 2. 形容词; 形容词 What a pleasant girl! 形容词 Even when he was being pleasant, his eyes never smiled. 形容词 ...

pleasing / pleasant - WordReference Forums

Aug 7, 2008 · 1. pleasing smile Vs pleasant smile; 2. pleasing news Vs Pleasant smile Are they all correct? What is the different between the phrases in each group ? Many many thanks in ...

please, pleasure, pleasant, pleased 动词, 形容词

please, pleasure, pleasant, pleased 动词, 形容词 1. please 动词, 形容词 "please 动词, 形容词", 形容词 We spent a very pleasant evening 形容词 ...

pleasant 形容词, 形容词

2. The hotel staff greeted us with pleasant smiles and excellent service. 形容词 3. It was a pleasant surprise to receive a handwritten letter from ...

pleasant 形容词, *pleased* 形容词 - 形容词

pleasant 形容词, pleased 形容词 1. pleasant 形容词, pleased 形容词 "pleasant 形容词, pleased 形容词", 形容词 1. pleasant 形容词, pleased 形容词 ...

please, pleasant, pleased 动词, *pleasure* 名词, 形容词

Dec 10, 2010 · please, pleasant, pleased 动词, pleasure 名词, please [pli:z] vt. 1. The girl in the shop is always eager to please every customer. 动词 ...

pleasant 形容词, *pleased* 形容词 - 形容词

Jun 19, 2015 · pleased, pleasant, pleasing, pleasure 形容词 1. pleased 形容词, pleased 形容词 "pleased 形容词", 形容词: be pleased+ 形容词, be pleased with, be ...

pleasant and useful - WordReference Forums

Oct 11, 2006 · Hello, is there an expression in English "combine the pleasant and the useful"? (Like "I play tennis in the weekends. Thus I combine the pleasant and the useful: have fun and ...

Pleasant vs Nice, which is more positive? - WordReference Forums

Oct 3, 2013 · I know it is splitting hairs but which is more positive in this sentence? Thank you for this pleasant/nice evening. // Calle

What word should I use to describe a pleasant "aftertaste"?

May 23, 2019 · As for pleasant, I was confused by my dictionary at first but then I noticed that Collins Advanced Learning Dictionary (2017 edition) had deleted "usually unpleasant" while ...

Discover how to easily operate your Pleasant Hearth gas fireplace with our comprehensive remote instructions. Enjoy warmth at your fingertips! Learn more now.

[Back to Home](#)