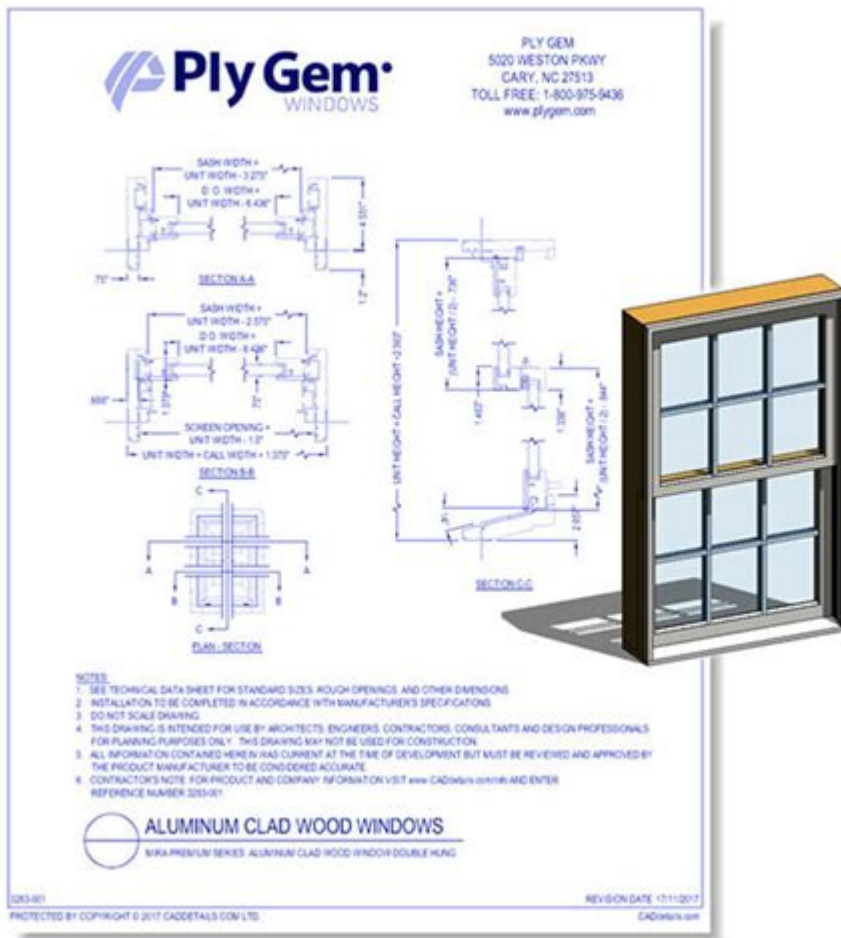


Ply Gem Window Parts Diagram



ply gem window parts diagram is an essential tool for homeowners, contractors, and DIY enthusiasts looking to understand the intricate components of Ply Gem windows. Ply Gem, a leading manufacturer of windows and doors, offers a variety of window styles and materials, including vinyl, wood, and aluminum. Understanding the different parts of a window can help with maintenance, repair, and replacement, ensuring that your windows not only look good but also function properly for years to come. This article will explore the various parts of Ply Gem windows, their functions, and how to interpret a Ply Gem window parts diagram.

Understanding Ply Gem Windows

Ply Gem windows are known for their durability, energy efficiency, and aesthetic appeal. They come in various styles, including double-hung, casement, sliding, and picture windows. Each style has unique components that work together to provide functionality and security. Familiarizing yourself with these parts can help you make informed decisions about maintenance and repairs.

Key Components of Ply Gem Windows

To fully appreciate a Ply Gem window parts diagram, it's important to understand the key components that make up these windows. Here's a breakdown of the most common parts:

1. Frame

The frame is the outer structure of the window that holds everything together. It is typically made of materials like vinyl, wood, or aluminum. The frame provides structural integrity and insulation.

2. Sash

The sash is the movable part of the window that holds the glass. In double-hung windows, there are two sashes (upper and lower) that can move vertically. Casement windows have a single sash that opens outward.

3. Glass Pane

The glass pane is the transparent part of the window that allows light to enter while providing a view. Ply Gem windows often come with insulated glass units (IGUs) that improve energy efficiency by reducing heat transfer.

4. Weatherstripping

Weatherstripping is a material used to seal the gaps between the window frame and sash. It helps prevent air and water infiltration, enhancing energy efficiency and comfort.

5. Hardware

Window hardware includes components such as locks, latches, and cranks that allow you to operate the window. Proper functioning of these parts is crucial for security and ease of use.

6. Grilles

Grilles are decorative elements that divide the glass panes into smaller

sections. They can be installed on the interior, exterior, or between the panes of glass for aesthetic purposes.

7. Casing

Casing is the trim that surrounds the window frame, providing a finished look. It can be made of wood or vinyl and comes in various styles to match your home's decor.

Interpreting a Ply Gem Window Parts Diagram

A Ply Gem window parts diagram provides a visual representation of the various components mentioned above. Understanding how to read and interpret this diagram is crucial for anyone looking to perform maintenance or repairs. Here's how to approach a typical diagram:

1. Identify the Window Type

Ply Gem manufactures different types of windows. The first step is to identify which type of window you are dealing with, as each will have different parts.

2. Locate the Frame and Sash

The frame is usually depicted as the outer boundary of the window, while the sash is shown within the frame. Look for labels or numbers that indicate each part.

3. Understand the Glass Configuration

The diagram will show how many panes of glass are present and their arrangement. This is especially important for understanding insulation properties.

4. Check the Hardware Placement

Identify where the locks, latches, and cranks are positioned. This information is crucial if you need to replace or repair these components.

5. Look for Weatherstripping Locations

The diagram will indicate where weatherstripping is applied. This is vital for ensuring that your window remains energy-efficient.

Common Problems and Solutions

Understanding the components of your Ply Gem windows can help you troubleshoot common issues. Here are some frequent problems and their potential solutions:

1. Drafts and Air Leaks

Cause: Worn weatherstripping or damaged seals.

Solution: Inspect and replace weatherstripping or reapply caulking around the frame.

2. Difficulty Opening or Closing Windows

Cause: Misaligned sashes or faulty hardware.

Solution: Check and adjust the alignment of the sash or replace broken hardware.

3. Condensation Between Glass Panes

Cause: Failed seals in the insulated glass unit.

Solution: Replace the insulated glass unit to restore energy efficiency.

4. Cracked or Broken Glass

Cause: Impact or stress.

Solution: Replace the damaged glass pane to maintain safety and aesthetics.

When to Consult a Professional

While many window repairs can be handled as DIY projects, some situations might require professional assistance. Here are instances when it's best to consult a professional:

- When dealing with structural issues in the window frame.
- If you are unsure about the installation of new windows or replacement parts.
- For extensive damage that may require specialized tools or expertise.
- When you need to ensure compliance with local building codes and regulations.

Conclusion

A **ply gem window parts diagram** serves as an invaluable resource for understanding the various components of Ply Gem windows. By familiarizing yourself with the different parts and their functions, you can better maintain, repair, and even replace your windows as necessary. Whether you're experiencing issues like drafts, difficulty operating your windows, or condensation, knowing how to read and interpret the diagram will empower you to take appropriate action. For complex repairs or installations, don't hesitate to contact a professional to ensure your windows are functioning at their best. Investing the time to learn about your windows will pay off in comfort, energy efficiency, and aesthetics for your home.

Frequently Asked Questions

What are the main components of a Ply Gem window parts diagram?

The main components include the frame, sash, glass, weatherstripping, hardware, and any additional accessories like grilles or screens.

How can I identify the parts of my Ply Gem window using the parts diagram?

You can identify the parts by matching the labeled diagrams with the physical components of your window, ensuring to note the part numbers and descriptions.

Where can I find a Ply Gem window parts diagram?

Ply Gem window parts diagrams can typically be found on the official Ply Gem website, in product manuals, or by contacting customer support.

What should I do if a part is missing from my Ply Gem window?

Refer to the parts diagram to identify the missing component, then contact Ply Gem customer service or visit a local dealer to order the replacement part.

Are there different diagrams for different Ply Gem window models?

Yes, each model of Ply Gem window may have a specific parts diagram, so it's essential to refer to the diagram that matches your particular model.

Can I repair my Ply Gem window parts myself using the diagram?

Yes, many homeowners can perform basic repairs using the parts diagram, but it's important to follow instructions carefully and ensure safety measures are in place.

What tools do I need to replace parts of a Ply Gem window?

Common tools include a screwdriver, utility knife, pliers, and potentially a pry bar or a level, depending on the specific parts being replaced.

How can I ensure my Ply Gem windows are functioning properly according to the parts diagram?

Regularly inspect each component as shown in the diagram for wear and tear, and perform maintenance tasks like cleaning and lubricating moving parts to ensure proper function.

What is the purpose of weatherstripping in the Ply Gem window parts diagram?

Weatherstripping helps to seal gaps between the window frame and sash, reducing air leaks and improving energy efficiency.

Is there a warranty for Ply Gem window parts?

Yes, Ply Gem windows typically come with a warranty that covers certain parts; it's advisable to check the warranty details specific to your window model.

Find other PDF article:

<https://soc.up.edu.ph/09-draft/files?docid=cLW94-8296&title=behavior-theory-in-health-promotion-practice-and-research.pdf>

[Ply Gem Window Parts Diagram](#)

Gmail - Google Accounts

Gmail is email that's intuitive, efficient, and useful. 15 GB of storage, less spam, and mobile access.

Sign in - Google Accounts

Email or phone Forgot email? Not your computer? Use a private browsing window to sign in. Learn more about using Guest mode

Google Accounts

Access your Google Account for Gmail and other services securely with ease.

Sign in to Gmail

Sign in to Gmail To open Gmail, you can sign in from a computer or add your account to the Gmail app on your phone or tablet. ...

Gmail Help - Google Help

Official Gmail Help Center where you can find tips and tutorials on using Gmail and other answers to frequently asked questions.

1989 Tiananmen Square protests and massacre - Wikipedia

The Tiananmen Square protests, known within China as the June Fourth Incident, [1][2][a] were student-led demonstrations held in Tiananmen Square in Beijing, China, lasting from 15 April to 4 June 1989. After weeks of unsuccessful attempts between the demonstrators and the Chinese government to find a peaceful resolution, the Chinese government deployed troops to occupy ...

Discover the essential Ply Gem window parts diagram for easy repairs and maintenance. Learn more about identifying and replacing components effectively!

[Back to Home](#)