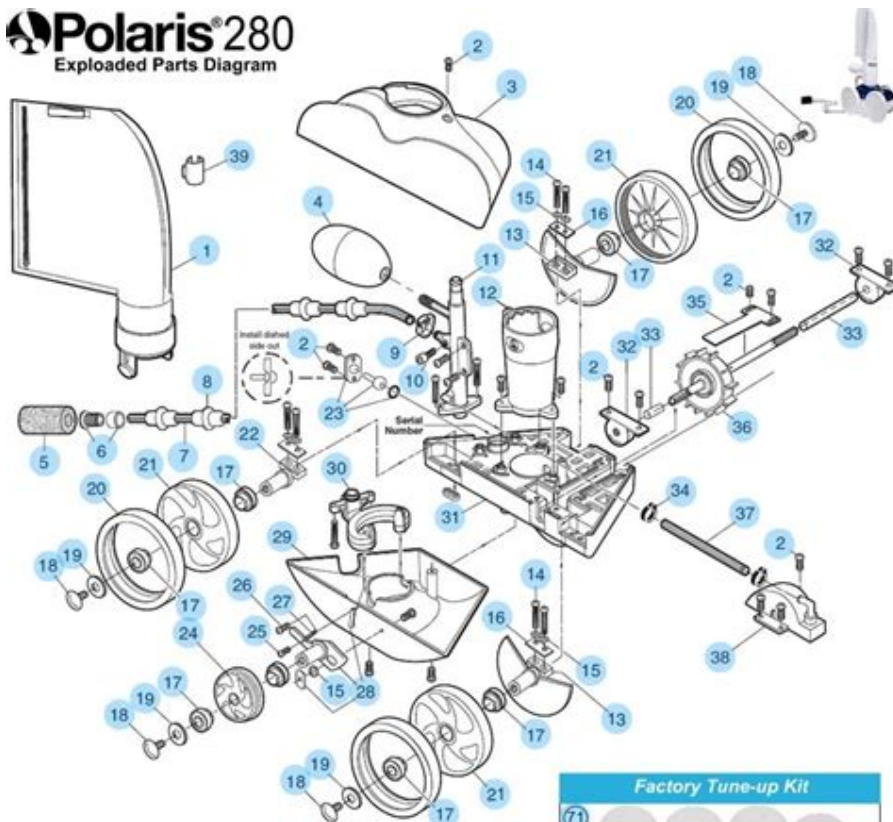


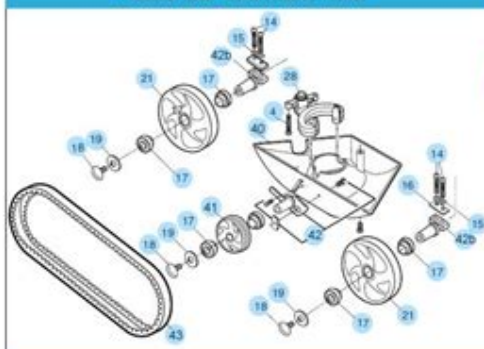
Polaris 280 Parts Diagram

Polaris®280

Exploded Parts Diagram



Polaris 280 TankTrax® Parts



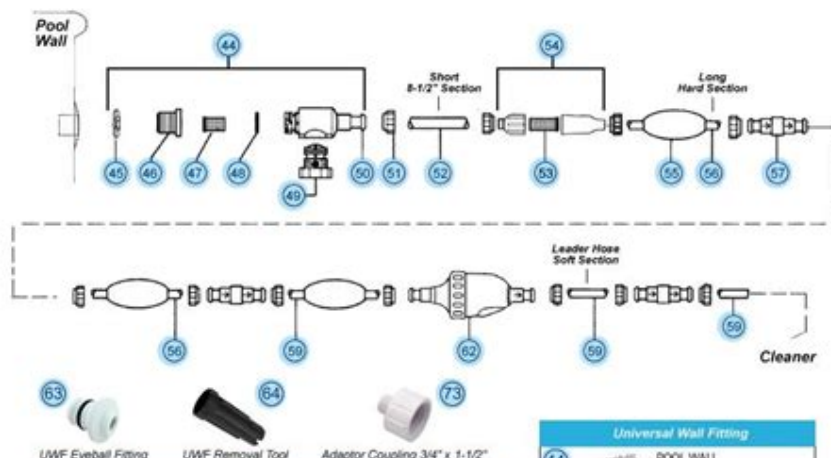
Factory Tune-up Kit



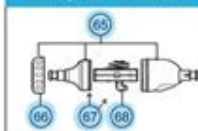
Factory Rebuild Kit



Polaris 280 Hose Parts



Back-up Valve Breakdown



Complete Feed Hose



Universal Wall Fitting



Polaris 280 parts diagram is an essential tool for any pool owner or technician looking to maintain or repair their Polaris 280 pool cleaner. Understanding the layout and components of this popular automatic pool cleaner can help you troubleshoot issues, replace worn-out parts, and ensure optimal performance. In this article, we will explore the components of the Polaris 280, provide a detailed parts diagram, and offer tips for maintenance and repair.

Overview of the Polaris 280 Pool Cleaner

The Polaris 280 is a pressure-side pool cleaner designed for in-ground pools. Known for its reliability and efficiency, it operates using water pressure from the pool's filtration system. The cleaner is equipped with a two-wheel drive system, making it capable of navigating various pool surfaces and shapes. To ensure the Polaris 280 operates at peak performance, understanding its parts and how they work together is crucial.

Components of the Polaris 280

The Polaris 280 consists of several key components, each playing a vital role in the cleaner's functionality. Here's a breakdown of the main parts:

- **Frame:** The structural component that houses all other parts.
- **Drive Wheels:** Two wheels that provide mobility and allow the cleaner to navigate the pool.
- **Tail Sweep:** An accessory that helps clean the walls and prevents debris from escaping.
- **Filter Bag:** Captures dirt and debris from the pool water.
- **Jet Nozzles:** Directs water flow to propel the cleaner and improve suction.
- **Hoses:** Connects the cleaner to the pool's filtration system.
- **Quick Disconnect Fitting:** Allows for easy removal of the cleaner from the pool.

Understanding the Polaris 280 Parts Diagram

The Polaris 280 parts diagram visually represents all the components mentioned above. This diagram is invaluable for anyone looking to replace parts or perform maintenance on the cleaner. Below are some of the key parts typically highlighted in the diagram:

1. **Frame Assembly:** Shows the overall structure of the cleaner.

2. **Wheel Assembly:** Illustrates the drive wheels and their connection to the frame.
3. **Tail Sweep Assembly:** Details the tail sweep mechanism and its positioning.
4. **Filter Bag:** Displays how the filter bag attaches to the frame.
5. **Jet Nozzle Configuration:** Shows the arrangement of the jet nozzles for optimal water flow.
6. **Hose Connection:** Depicts how the hoses connect to the cleaner and the pool filtration system.

Importance of the Parts Diagram

Having access to the Polaris 280 parts diagram can significantly simplify the process of maintenance and repair. Here are some reasons why it's crucial for pool owners and technicians:

- **Easy Identification:** Quickly identify each part and understand its function within the cleaner.
- **Streamlined Repairs:** Facilitate faster repairs by providing clear visual guidance.
- **Replacement Parts:** Ensure you are ordering the correct replacement parts by referencing the diagram.
- **Maintenance Guidance:** Aid in routine maintenance tasks, ensuring all components are in good working condition.

Common Issues and Troubleshooting

Even with proper maintenance, the Polaris 280 may encounter issues over time. Below are some common problems and troubleshooting tips:

1. Cleaner Not Moving

If the Polaris 280 is not moving, check the following:

- **Drive Wheels:** Inspect for obstructions or damage.
- **Hoses:** Ensure hoses are not kinked or blocked.
- **Filters:** Clean or replace the filter bag if it is clogged.

2. Poor Cleaning Performance

If the cleaner is not picking up debris effectively:

- Jet Nozzles: Check for clogs or damage.
- Weight Distribution: Ensure the cleaner is properly weighted for optimal movement.
- Hose Length: Verify that the hose is the correct length for your pool size.

3. Water Leaks

If you notice water leaks from the cleaner:

- Hoses: Inspect hoses for cracks or leaks.
- Seal Integrity: Ensure all seals and connections are tight.

Tips for Maintaining Your Polaris 280

To extend the life of your Polaris 280 and keep it functioning efficiently, follow these maintenance tips:

1. Regularly clean the filter bag to prevent clogs.
2. Inspect the drive wheels for wear and replace as necessary.
3. Check hoses for kinks or damage and replace if needed.
4. Ensure the tail sweep is functioning correctly to avoid debris buildup.
5. Store the cleaner in a cool, dry place when not in use to prevent wear from UV exposure.

Where to Find Replacement Parts

Finding the right replacement parts for your Polaris 280 can be done through various sources:

- **Manufacturer's Website:** Check the official Polaris website for genuine parts.
- **Local Pool Supply Stores:** Visit local retailers for immediate availability.
- **Online Retailers:** Platforms like Amazon and eBay often carry a wide range of parts.
- **Pool Service Professionals:** Contact local pool service companies for expert

assistance and parts.

Conclusion

Understanding the **Polaris 280 parts diagram** is essential for any pool owner or service technician. This knowledge not only simplifies maintenance and repairs but also ensures that your pool cleaner operates efficiently. By familiarizing yourself with the components, common issues, and maintenance tips outlined in this article, you can keep your Polaris 280 running smoothly for years to come. Remember, regular upkeep and timely repairs are the keys to enjoying a pristine pool environment.

Frequently Asked Questions

What is the purpose of the Polaris 280 parts diagram?

The Polaris 280 parts diagram serves as a visual reference that outlines the various components of the Polaris 280 pool cleaner, helping users identify and locate parts for maintenance, repair, or replacement.

Where can I find a reliable Polaris 280 parts diagram?

A reliable Polaris 280 parts diagram can be found on the official Polaris website, in user manuals, or through authorized Polaris dealers and online retailers specializing in pool equipment.

How do I interpret the Polaris 280 parts diagram?

To interpret the Polaris 280 parts diagram, start by identifying the labeled components, refer to the corresponding part numbers, and consult the accompanying parts list to understand the function of each part.

Are there any common issues related to Polaris 280 parts that the diagram can help identify?

Yes, the Polaris 280 parts diagram can help identify common issues such as worn-out wheels, clogged filters, or damaged hoses, allowing users to pinpoint problems quickly and find the necessary replacement parts.

Can I use the Polaris 280 parts diagram for DIY repairs?

Absolutely! The Polaris 280 parts diagram is a valuable tool for DIY repairs, as it provides clear visuals and part identification that can guide users through the disassembly and reassembly process.

What should I do if a part in the Polaris 280 parts diagram is obsolete?

If a part in the Polaris 280 parts diagram is obsolete, check with authorized dealers for equivalent replacements or consult the manufacturer's customer service for alternative solutions.

Find other PDF article:

<https://soc.up.edu.ph/64-frame/pdf?ID=pnH17-7799&title=vengeance-guest-warrior-fury.pdf>

Polaris 280 Parts Diagram

████████████████████ (Polaris Office) ██████████ - ██████████ ██████████

0000 0000v9.103.88 PolarisOfficeSetup.exe / 186MB 00 0000: 2021-08-12 0000 000 0000 0 0000 00 00
 000000 0000 Polaris Office Corp OS 0000, 0, ...

Team-BHP - India's Most Trusted Car Reviews & News

Team-BHP takes ZERO advertising money from the auto industry, hence provides the most trusted, detailed and unbiased Car Reviews & News in India.

Polaris? -

Polaris? Polaris Polaris?

14

Asia D, JAMMERC Polaris -

2011 1

linuxoffice -

```

XXXXXXXXXXXXXXXXXubuntuXXXX linux\bluepoint\redhat\centosXXXX XXXXXXXXXXXXXXX
\windows\linux\XXXXXXXXXXXXXXXXX ...

```

Polaris 4 x 4 in India - Team-BHP

Jul 11, 2011 · Hi Guys, I have been recently seeing teaser advertisements (on cricket channels) of Polaris 4x4 vehicles to be sold in India. These 4x4 2 seaters have the potential to open some ...

□□ **2020** □□ □□ □ □□□

2020 2020.zip / 1.1GB 2022-09-07 2020 2020 HWP 2020 2020 2020
Windows 7 / 8 / 10 / 11 2020 2020 ...

AMD RX 590 16GB GDDR5 - 10

AMD RX 590 GME 12nm GCN4.0

[illegible]

May 30, 2020 · [XXXXXXXXXXXXXXXXXXXXXXXXXXXXX? XXXXXXXX BMTH,Polaris,WSS, kingdom of gaint, emmure, life awaits, immi... XXXX XXX 30 ...](#)

```
macbookair hwp -
```

Mar 22, 2020 · [Polaris Office for Mac](#) [App Store](#) [google drive](#) [hwp](#) ...

████████████████████ (Polaris Office) ██████████ - ██████████ ██████████

00000000 v9.103.88 PolarisOfficeSetup.exe / 186MB 00 000000: 2021-08-12 0000 000 0000 0 0000 00 00
 00000000 0000 Polaris Office Corp OS 0000, 0, ...

Team-BHP - India's Most Trusted Car Reviews & News

Team-BHP takes ZERO advertising money from the auto industry, hence provides the most trusted, detailed and unbiased Car Reviews & News in India.

Polaris? -

Polaris? Polaris? Polaris?

14

Asia D, JAMMERC Polaris - 00

2011 年 1 月 ...

linux office -

```

Xubuntu linux bluepoint redhat centos
windows linux ...

```

Polaris 4 x 4 in India - Team-BHP

Jul 11, 2011 · Hi Guys, I have been recently seeing teaser advertisements (on cricket channels) of Polaris 4x4 vehicles to be sold in India. These 4x4 2 seaters have the potential to open ...

□□ **2020** □□ □□ □ □□□

2020 2020.zip / 1.1GB 2022-09-07 2020 HWP Windows 7 / 8 / 10 / 11 v2020 ...

AMD RX 590 8GB GDDR5 - 1500MHz

AMD RX 590 GME 16GB GDDR6 12nm GCN4.0

? -

May 30, 2020 · ￼? ￼BMTH,Polaris,WSS, kingdom of gaint,
emmure, ￼life awaits, immi... ￼ ￼ ...

```
macbookair ~ % hwp -
```

Mar 22, 2020 · [Polaris Office for Mac](#) [App Store](#) [google drive](#) [hwp](#) ...

Explore our detailed Polaris 280 parts diagram to easily identify components and enhance your pool cleaner's performance. Learn more for expert tips!

[Back to Home](#)