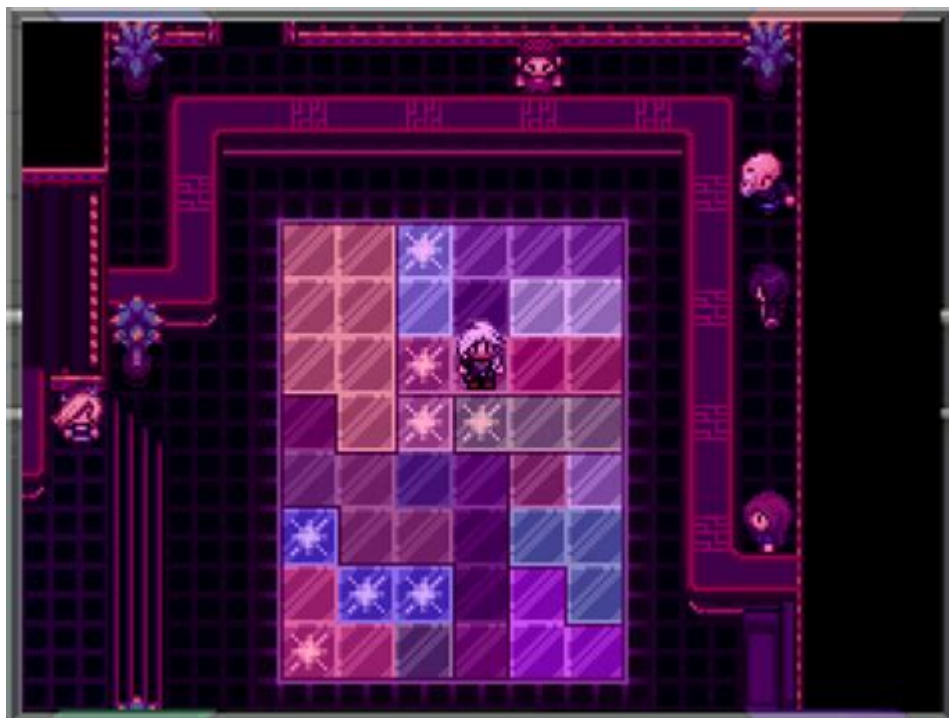


Pokemon Reborn Postgame Guide



POKEMON REBORN POSTGAME GUIDE

POKEMON REBORN IS AN AMBITIOUS FAN-MADE GAME THAT OFFERS PLAYERS A RICH AND IMMERSIVE EXPERIENCE IN THE WORLD OF POKÉMON. UNLIKE THE OFFICIAL TITLES, REBORN FEATURES A DARKER STORYLINE, MORE COMPLEX CHARACTERS, AND CHALLENGING GAMEPLAY. AFTER COMPLETING THE MAIN STORYLINE, PLAYERS ARE TREATED TO THE POSTGAME CONTENT, WHICH IS PACKED WITH ADDITIONAL CHALLENGES, SECRETS, AND ADVENTURES THAT CAN EXTEND THE GAMEPLAY SIGNIFICANTLY. THIS GUIDE WILL HELP YOU NAVIGATE THE POSTGAME CONTENT, ENSURING THAT YOU GET THE MOST OUT OF YOUR POKEMON REBORN EXPERIENCE.

UNDERSTANDING THE POSTGAME STRUCTURE

THE POSTGAME OF POKEMON REBORN IS NOT MERELY A CONTINUATION OF THE MAIN STORYLINE BUT RATHER AN EXPANSION THAT INTRODUCES NEW CHALLENGES, POKÉMON, AND LOCATIONS. PLAYERS SHOULD BE PREPARED FOR TOUGHER BATTLES AND MORE INTRICATE PUZZLES AS THEY EXPLORE THE NEW AREAS.

KEY FEATURES OF THE POSTGAME

- ELITE FOUR REMATCH: AFTER DEFEATING THE ELITE FOUR, PLAYERS CAN CHALLENGE THEM AGAIN WITH STRONGER POKÉMON AND NEW STRATEGIES.
- SIDE QUESTS: NUMEROUS SIDE QUESTS BECOME AVAILABLE, OFFERING UNIQUE REWARDS AND ADDITIONAL LORE.
- HIDDEN AREAS: EXPLORE HIDDEN AREAS THAT CONTAIN RARE POKÉMON AND ITEMS NOT FOUND IN THE MAIN GAME.
- BATTLE FACILITIES: ENGAGE IN VARIOUS BATTLE FACILITIES WHERE YOU CAN TEST YOUR SKILLS AGAINST OTHER TRAINERS.
- LEGENDARY POKÉMON: CAPTURE LEGENDARY POKÉMON THAT WERE NOT AVAILABLE DURING THE MAIN GAME.

GETTING STARTED WITH THE POSTGAME

ONCE YOU HAVE COMPLETED THE MAIN STORYLINE AND DEFEATED THE CHAMPION, IT'S TIME TO DIVE INTO THE POSTGAME CONTENT. HERE ARE SOME STEPS TO HELP YOU GET STARTED:

1. EXPLORE THE NEW AREAS: AFTER THE CREDITS ROLL, YOU WILL FIND THAT CERTAIN AREAS OF THE MAP ARE NOW ACCESSIBLE. SPEND TIME EXPLORING THESE NEW LOCATIONS.
2. CHECK YOUR POKEDEX: UPDATE YOUR POKEDEX TO SEE WHICH POKÉ MON YOU CAN STILL CATCH. THE POSTGAME OPENS UP NEW OPTIONS FOR CAPTURING POKÉ MON.
3. VISIT THE ELITE FOUR: CONSIDER TACKLING THE ELITE FOUR AGAIN. THEY WILL HAVE STRONGER POKÉ MON AND DIFFERENT STRATEGIES, SO BE PREPARED.
4. ENGAGE IN SIDE QUESTS: TAKE ON SIDE QUESTS THAT WILL NOT ONLY ENHANCE YOUR UNDERSTANDING OF THE STORY BUT ALSO PROVIDE VALUABLE REWARDS.

POSTGAME AREAS TO EXPLORE

THE WORLD OF POKEMON REBORN EXPANDS SIGNIFICANTLY IN THE POSTGAME. HERE ARE SOME CRITICAL AREAS YOU SHOULD EXPLORE:

1. AGATE CIRCUS

AGATE CIRCUS OFFERS A VARIETY OF SIDE QUESTS AND MINI-GAMES. PLAYERS CAN ENJOY ATTRACTIONS AND CHALLENGES WHILE ALSO FINDING UNIQUE POKÉ MON.

- MINI-GAMES: PARTICIPATE IN DIFFERENT MINI-GAMES TO WIN PRIZES.
- UNIQUE POKÉ MON: LOOK FOR POKÉ MON THAT ARE EXCLUSIVE TO THIS LOCATION.

2. THE REBORN LEAGUE

THE REBORN LEAGUE IS A CHALLENGING NEW AREA WHERE PLAYERS CAN TEST THEIR SKILLS AGAINST VARIOUS TRAINERS.

- CHALLENGER BATTLES: ENGAGE IN BATTLES AGAINST TOP-TIER TRAINERS.
- BATTLE POINTS: EARN BATTLE POINTS TO EXCHANGE FOR REWARDS.

3. THE GRAND HALL

RETURNING TO THE GRAND HALL CAN BE BENEFICIAL AS IT SERVES AS A HUB FOR TRAINERS. HERE, YOU CAN ACCESS VARIOUS SERVICES.

- POKÉ MON CENTER: HEAL YOUR POKÉ MON AND MANAGE YOUR TEAM.
- BATTLE FACILITIES: CHALLENGE YOURSELF IN DIFFERENT BATTLE FORMATS.

4. THE HIDDEN CAVE

THE HIDDEN CAVE IS ONE OF THE MOST CHALLENGING POSTGAME AREAS, FILLED WITH ELUSIVE POKÉ MON AND FORMIDABLE TRAINERS.

- RARE ITEMS: EXPLORE THE DEPTHS FOR RARE ITEMS.
- LEGENDARY ENCOUNTERS: ENCOUNTER LEGENDARY POKÉMON THAT CAN ONLY BE FOUND HERE.

COMPLETING SIDE QUESTS

SIDE QUESTS ARE AN INTEGRAL PART OF THE POSTGAME EXPERIENCE, PROVIDING LORE, CHALLENGES, AND REWARDS. HERE ARE SOME NOTABLE SIDE QUESTS TO CONSIDER:

1. THE MISSING CHILDREN QUEST

THIS QUEST INVOLVES TRACKING DOWN LOST CHILDREN IN THE REBORN REGION. PLAYERS WILL SOLVE PUZZLES AND ENGAGE IN BATTLES TO UNCOVER THE MYSTERY.

- REWARD: UNIQUE ITEMS AND NEW POKÉMON.

2. THE MYSTERY OF THE MISSING GYM LEADERS

UNCOVER THE FATE OF THE MISSING GYM LEADERS THROUGH A SERIES OF BATTLES AND CHALLENGES. THIS QUEST NOT ONLY ENHANCES THE STORY BUT ALSO REWARDS YOU WITH RARE POKÉMON.

- REWARD: ACCESS TO EXCLUSIVE TRAINERS AND BATTLES.

3. THE LEGENDARY POKÉMON QUEST

MANY LEGENDARY POKÉMON CAN BE CAPTURED DURING SIDE QUESTS. THIS INVOLVES SOLVING INTRICATE PUZZLES AND BATTLING POWERFUL OPPONENTS.

- TIPS: BRING A WELL-ROUNDED TEAM AND STOCK UP ON ULTRA BALLS.

LEGENDARY POKÉMON LOCATIONS

CAPTURING LEGENDARY POKÉMON IS ONE OF THE MOST ENTICING ASPECTS OF THE POSTGAME. HERE ARE SOME KEY LOCATIONS:

1. CELESTIAL TOWER

HOME TO RAYQUAZA AND OTHER POWERFUL POKÉMON. PLAYERS MUST NAVIGATE THROUGH CHALLENGING TRAINERS AND PUZZLES TO REACH THE TOP.

2. THE RUINS OF THE ANCIENTS

THIS AREA IS HOME TO VARIOUS LEGENDARY POKÉMON, INCLUDING MEWTWO AND LUGIA. EXPECT TOUGH BATTLES AND UNIQUE CHALLENGES.

3. THE ABYSSAL DEPTHS

A MYSTERIOUS UNDERWATER AREA WHERE PLAYERS CAN ENCOUNTER LEGENDARY POKÉMON LIKE KYOGRE.

BATTLE STRATEGY FOR POSTGAME CONTENT

THE POSTGAME BATTLES ARE NOTABLY TOUGHER, REQUIRING PLAYERS TO ADOPT NEW STRATEGIES. HERE ARE SOME TIPS TO ENHANCE YOUR BATTLE PERFORMANCE:

- DIVERSIFY YOUR TEAM: ENSURE YOU HAVE A WELL-ROUNDED TEAM CAPABLE OF HANDLING VARIOUS TYPES.
- STATUS EFFECTS: UTILIZE MOVES THAT INFLICT STATUS EFFECTS SUCH AS PARALYSIS OR SLEEP TO GAIN AN ADVANTAGE.
- ITEM MANAGEMENT: KEEP A STOCK OF HEALING ITEMS, STATUS HEALERS, AND REVIVES FOR LONGER BATTLES.
- KNOW YOUR OPPONENT: FAMILIARIZE YOURSELF WITH THE TYPES AND MOVES OF THE TRAINERS YOU'LL BE BATTLING.

CONCLUSION

THE POSTGAME CONTENT OF POKEMON REBORN IS A TREASURE TROVE OF NEW CHALLENGES, LORE, AND ADVENTURES. IT INVITES PLAYERS TO EXPLORE, STRATEGIZE, AND ENGAGE WITH THE GAME IN A WAY THAT EXTENDS BEYOND THE MAIN STORYLINE. BY FOLLOWING THIS GUIDE, YOU WILL BE WELL-EQUIPPED TO DIVE INTO THE POSTGAME AND UNCOVER ALL THE SECRETS THAT AWAIT IN THE REBORN REGION. HAPPY TRAINING, AND MAY YOU CATCH 'EM ALL!

FREQUENTLY ASKED QUESTIONS

WHAT ARE SOME MUST-HAVE POKÉMON FOR THE POKÉMON REBORN POSTGAME?

SOME MUST-HAVE POKÉMON FOR THE POSTGAME INCLUDE MEGA GARDEVOIR, DRAGAPULT, AND EXCADRILL DUE TO THEIR VERSATILITY AND POWERFUL MOVESETS.

HOW DO I ACCESS THE POSTGAME CONTENT IN POKÉMON REBORN?

TO ACCESS THE POSTGAME CONTENT, YOU MUST COMPLETE THE MAIN STORYLINE BY DEFEATING THE ELITE FOUR AND THE CHAMPION.

WHAT ARE THE BEST STRATEGIES FOR BATTLING IN THE POKÉMON REBORN POSTGAME?

UTILIZE TYPE ADVANTAGES, EXPLOIT OPPONENT WEAKNESSES, AND CONSIDER USING A BALANCED TEAM WITH BOTH OFFENSIVE AND DEFENSIVE CAPABILITIES.

ARE THERE ANY NEW AREAS TO EXPLORE IN THE POKÉMON REBORN POSTGAME?

YES, THERE ARE SEVERAL NEW AREAS TO EXPLORE, INCLUDING THE AGATE CIRCUS AND THE HIDDEN LIBRARY, WHICH CONTAIN UNIQUE CHALLENGES AND TRAINERS.

WHAT LEGENDARY POKÉMON CAN I CAPTURE DURING THE POSTGAME?

YOU CAN CAPTURE SEVERAL LEGENDARY POKÉMON SUCH AS MEWTWO, RAYQUAZA, AND THE CREATION TRIO (DIALGA, PALKIA, AND GIRATINA) DURING THE POSTGAME.

Jan 28, 2025 · Features Lunar New Year 2025 Lunar New Year has returned to PokeMMO! A fortune teller has appeared in Celadon City, Slateport City, Hearthome City, Ecruteak City, and ...

Unlock the secrets of Pokémon Reborn with our comprehensive postgame guide! Discover tips

[Back to Home](#)