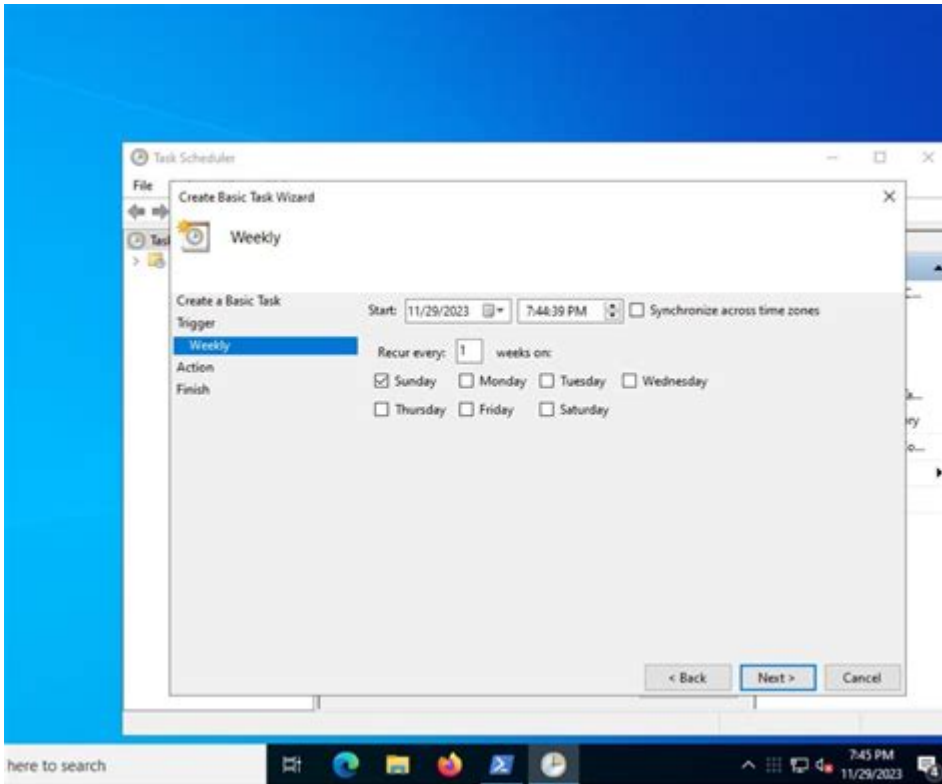


# Plex Backup Watch History



**Plex backup watch history** is an essential topic for any Plex user who wants to preserve their viewing preferences, resume points, and personal recommendations. Plex, a popular media server platform, allows users to organize and stream their media collections. However, as users accumulate content and watch history, it becomes crucial to know how to back up and restore this information effectively. In this article, we will explore the importance of backing up your Plex watch history, the methods available for doing so, and some tips and best practices for maintaining a stable Plex environment.

## Why You Should Back Up Your Plex Watch History

Backing up your watch history in Plex can provide several benefits, including:

- **Data Security:** Avoid losing valuable data due to system failures or accidental deletions.
- **Seamless Migration:** When moving to a new server or upgrading your hardware, you can easily transfer your watch history.
- **User Experience:** Retain your personalized recommendations and continue

watching from where you left off.

- **Family Sharing:** If multiple users access the same Plex server, backing up the watch history helps maintain individual user preferences.

## Understanding Plex Watch History

Plex tracks a user's viewing activities, including what content has been watched, the duration of viewing, and the position where the user left off. This information is stored in the Plex library database, which is essential for generating personalized recommendations and keeping track of content watched.

## Key Components of Plex Watch History

1. **Watched Status:** Indicates whether a user has completed watching a particular title.
2. **Resume Points:** Stores the timestamp of where the user left off, allowing for easy resumption of viewing.
3. **User Profiles:** Plex allows multiple user profiles, each with its own watch history and preferences, making it crucial to back up this information individually.

## How to Back Up Your Plex Watch History

Backing up your Plex watch history involves copying the relevant database files and configuration settings. Below are the steps to effectively back up your Plex data.

## Step-by-Step Guide to Backing Up Plex Watch History

1. **Locate Your Plex Media Server Data Directory:**
  - The default location for the Plex data directory varies based on the operating system:
  - Windows: `C:\Users\\AppData\Local\Plex Media Server\`
  - macOS: `~/Library/Application Support/Plex Media Server/`
  - Linux: `/var/lib/plexmediaserver/Library/Application Support/Plex Media Server/`
2. **Stop the Plex Media Server:**
  - Before making any changes, stop the Plex Media Server to prevent data

corruption.

### 3. Back Up the Database:

- Navigate to the `Plex Media Server` folder and locate the `Preferences.xml` file and the `Plug-in Support` folder.
- Copy the entire `Plex Media Server` directory to a secure location (an external hard drive, cloud storage, etc.).

### 4. Confirm the Backup:

- After copying, ensure that the files are intact and accessible in your backup location.

### 5. Restart the Plex Media Server:

- Once the backup is complete, restart the Plex server for normal operation.

## Restoring Your Plex Watch History

In the event you need to restore your Plex watch history, the process is straightforward. Here's how to do it:

## Step-by-Step Guide to Restoring Plex Watch History

### 1. Stop the Plex Media Server:

- As with backups, stop the server to avoid data corruption during restoration.

### 2. Locate Your Backup:

- Find the previously saved backup of the `Plex Media Server` directory.

### 3. Replace Existing Files:

- Copy the backup files back into the original Plex data directory, replacing the existing files.

### 4. Restart the Plex Media Server:

- Start the server again and check if your watch history and preferences are restored.

## Best Practices for Plex Backup Maintenance

To ensure a smooth experience with your Plex server, consider the following best practices:

- **Regular Backups:** Schedule backups of your Plex data at regular intervals to capture any new watch history or changes.

- **Version Control:** Keep multiple versions of backups to prevent loss of data in case of corruption.
- **Document Changes:** Keep a log of any major changes to your Plex setup to refer back to if needed.
- **Test Your Backups:** Periodically test the restoration process to ensure that you can recover your data when needed.
- **Utilize Cloud Solutions:** Consider using cloud storage for off-site backups to safeguard against local hardware issues.

## Common Issues and Troubleshooting

While backing up and restoring your Plex watch history is relatively straightforward, you may encounter issues. Here are some common problems and solutions:

### File Corruption

- If your backup files become corrupted, you may need to restore from an earlier version or recreate the watch history manually.

### Incompatible Versions

- Ensure that the Plex server version you are restoring is compatible with the backup files. If you have updated Plex, restoring older files may cause issues.

### Missing Watch History

- If your watch history is missing after a restoration, check to ensure that you have copied the correct database files and that the Plex server is running properly.

## Conclusion

In conclusion, **Plex backup watch history** is a vital process for any avid Plex user who values their viewing history and preferences. By following the steps outlined in this article, you can efficiently back up and restore your Plex watch history, ensuring a seamless viewing experience. Regular maintenance and adherence to best practices will further enhance the reliability of your

Plex server, allowing you to enjoy your media collection without worry.

## **Frequently Asked Questions**

### **What is Plex Backup Watch History?**

Plex Backup Watch History refers to the process of creating a backup of the watch history data in Plex Media Server, allowing users to restore their viewing history in case of data loss or server migration.

### **How can I back up my Plex watch history?**

You can back up your Plex watch history by exporting the database files from your Plex Media Server, specifically the 'com.plexapp.plugins.library.db' file, which contains your watch history along with library metadata.

### **Is there a way to automate Plex watch history backups?**

Yes, you can automate Plex watch history backups by creating a scheduled task or using scripts that periodically copy the necessary database files to a secure location.

### **What happens to my watch history if I reinstall Plex?**

If you reinstall Plex without backing up your data, your watch history will be lost. It's crucial to back up your database before uninstalling or reinstalling Plex.

### **Can I restore my Plex watch history from a backup?**

Yes, you can restore your Plex watch history by replacing the current database file with your backed-up version. Make sure to stop the Plex Media Server before doing this to avoid data corruption.

### **Does Plex offer a built-in feature for backing up watch history?**

No, Plex does not currently have a built-in feature specifically for backing up watch history. Users must manually back up the database files to preserve their watch history.

### **Are there third-party tools for managing Plex watch history backups?**

Yes, there are third-party tools and scripts available within the Plex community that can help automate the backup process for Plex watch history.

and other data.

Find other PDF article:

<https://soc.up.edu.ph/67-blur/Book?trackid=rFX58-8875&title=witness-to-surrender.pdf>

## **Plex Backup Watch History**

### **Plex Media Server will not open or run**

Dec 5, 2024 · Plex Media Server.1.log (2.4 KB) Unable to get media server working on my new computer. Done multiple uninstalls, changed install directory, etc... Attached the log that ...

### **TV Show not showing up - Plex Media Server - Plex Forum**

May 18, 2021 · Server Version#: 4.56.4 Player Version#: N/A Hello! I recently noticed that some of my TV shows were not showing up in the libraries. I'm trying to figure out one specific case ...

### **An important Watch Together change - Plex Forum**

Feb 24, 2025 · It was the year 2020. Life had gotten very different, very fast. Then, at the request of a fan named Joe, Plex Labs quickly put in some long hours creating a way for the world to ...

### **HEVC Encoding (Experimental) Public Release - Plex Forum**

Jan 21, 2025 · We are happy to announce a public version of the new HEVC transcoder. Note this is still considered experimental. Thank you to all the users that helped test this while in ...

### **EAC3 audio not working in windows 11 (fix provided) - Plex Forum**

May 11, 2025 · I had some videos that played without sound and almost deleted them, then decided to see how it ran through my TV and it worked perfectly, (server is synology linux, I'm ...

### **How to access the Plex Experience Preview (Android mobile, iOS, ...**

Nov 11, 2024 · Android (mobile) To access Plex Experience Preview for mobile Android devices, you first need to have your Google Play account "opt in" to test the preview app. This is done ...

### ***Using Plex TV Series Agent for Anime***

Feb 23, 2025 · Dynamic Alternate orders As of Plex Media Server version 1.40.4 (and when using the Plex TV Series agent), it is possible to set the appropriate episode order for a TV series ...

### **Plex Forum**

Plex Forum ... Plex Forums

### **Introducing Reviews for Movies & Shows! - Plex Forum**

Today we're excited to launch Reviews! Any registered Plex account can now review any Movie, Show, Season, or Episode. You can also optionally flag your reviews as containing spoilers to ...

### ***Plex for Mobile (Android & iOS) - Announcements - Plex Forum***

Mar 31, 2025 · Plex for Android 2025.10.1 (Google Play) Plex for iOS 2025.10.1 (App Store) NOTE: We are performing a staged rollout. This initial release will go out to users over the ...

*Plex Media Server will not open or run*

Dec 5, 2024 · Plex Media Server.1.log (2.4 KB) Unable to get media server working on my new computer. Done multiple uninstalls, changed install directory, etc... Attached the log that shows ...

### **TV Show not showing up - Plex Media Server - Plex Forum**

May 18, 2021 · Server Version#: 4.56.4 Player Version#: N/A Hello! I recently noticed that some of my TV shows were not showing up in the libraries. I'm trying to figure out one specific case that ...

### **An important Watch Together change - Plex Forum**

Feb 24, 2025 · It was the year 2020. Life had gotten very different, very fast. Then, at the request of a fan named Joe, Plex Labs quickly put in some long hours creating a way for the world to ...

### *HEVC Encoding (Experimental) Public Release - Plex Forum*

Jan 21, 2025 · We are happy to announce a public version of the new HEVC transcoder. Note this is still considered experimental. Thank you to all the users that helped test this while in preview ...

### **EAC3 audio not working in windows 11 (fix provided) - Plex Forum**

May 11, 2025 · I had some videos that played without sound and almost deleted them, then decided to see how it ran through my TV and it worked perfectly, (server is synology linux, I'm watching ...

### **How to access the Plex Experience Preview (Android mobile, iOS, ...**

Nov 11, 2024 · Android (mobile) To access Plex Experience Preview for mobile Android devices, you first need to have your Google Play account "opt in" to test the preview app. This is done by ...

### **Using Plex TV Series Agent for Anime**

Feb 23, 2025 · Dynamic Alternate orders As of Plex Media Server version 1.40.4 (and when using the Plex TV Series agent), it is possible to set the appropriate episode order for a TV series ...

### **Plex Forum**

Plex Forum ... Plex Forums

### Introducing Reviews for Movies & Shows! - Plex Forum

Today we're excited to launch Reviews! Any registered Plex account can now review any Movie, Show, Season, or Episode. You can also optionally flag your reviews as containing spoilers to ...

### **Plex for Mobile (Android & iOS) - Announcements - Plex Forum**

Mar 31, 2025 · Plex for Android 2025.10.1 (Google Play) Plex for iOS 2025.10.1 (App Store) NOTE: We are performing a staged rollout. This initial release will go out to users over the course of the ...

Discover how to effectively Plex backup watch history to keep your viewing preferences safe. Learn more about the best methods and tips in our comprehensive guide!

[Back to Home](#)