

# Polaris Magnum 425 Owners Manual

## GENERAL INFORMATION Model Identification

### Engine Serial Number Location

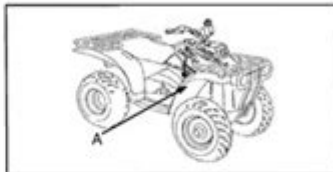
Whenever corresponding about an engine, be sure to refer to the engine model number and serial number. This information can be found on the sticker applied to the manual starter recoil housing. An additional number is stamped in one of the following locations:

- 4 stroke models - center top of crankcase beneath the cylinder coolant elbow
- 2 stroke liquid cooled models - center top of crankcase beneath the carburetor mounting flange
- 2 stroke air cooled models - top of crankcase near right side of cylinder

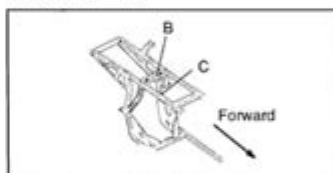
### Machine Model Number and Serial Number Location

The machine model number and serial number are important for vehicle identification. The machine model number is located on the frame on the left side of the vehicle near the oil tank. Depending on model, the Serial number will be stamped into the frame in one of the following locations:

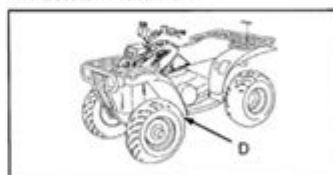
- On the right side of the vehicle in front of the shift selector box (A). (1996)
- Under the seat on the upper shock mount cross member (B) (1996)
- On the right hand frame rail (C) near the air box. (1997)
- On the left hand lower frame rail (D) near the rear A-arm mount. (1998-Current)



VIN Location - 1996



VIN Location - 1996/1997



VIN Location - 1998-Current

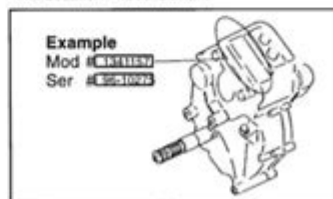
### Transmission I.D. Number Location

Transmission model and serial numbers are located on top of the transmission case below the shifting bell-cranks.

### Carburetor I.D. Number Location

The carburetor I.D. number is in one of the following locations:

- 4 stroke models - right side center of the carburetor body
- 2 stroke models - right side of carburetor body near choke plunger boss



Transmission I.D. Numbers

**Polaris Magnum 425 owners manual** is an essential guide for anyone who owns or is considering purchasing this reliable all-terrain vehicle (ATV). The Polaris Magnum 425 is known for its durability and versatility, making it a popular choice for both recreational and utility purposes. This article will delve into the key features of the Magnum 425, the importance of the owner's manual, maintenance tips, and troubleshooting advice to ensure that your ATV remains in peak condition.

## Understanding the Polaris Magnum 425

The Polaris Magnum 425 is a powerful ATV designed for both work and play. With a robust engine and rugged construction, it can handle a variety of

terrains and tasks. Below are some of the standout features of the Magnum 425.

## Key Features

- **Engine:** The Magnum 425 is equipped with a 425cc, four-stroke engine that provides ample power for hauling and towing.
- **Transmission:** It features an automatic transmission with high, low, and reverse gears, making it easy to navigate different terrains.
- **Suspension:** With independent front and rear suspension, the Magnum 425 offers a smooth ride even on rough trails.
- **Towing Capacity:** This ATV is capable of towing up to 1,200 lbs, making it suitable for various utility tasks.
- **Storage Options:** The Magnum 425 comes with multiple storage compartments, allowing for easy transport of tools and gear.

## The Importance of the Owners Manual

The Polaris Magnum 425 owner's manual is not just a booklet filled with technical details; it is an invaluable resource for every owner. Here's why having this manual is crucial:

## Comprehensive Information

The owner's manual provides detailed information about the ATV, including:

- **Specifications:** Technical details about the engine, dimensions, weight, and fuel capacity.
- **Safety Guidelines:** Important safety precautions to follow while operating the vehicle.
- **Operating Instructions:** Step-by-step guidance on how to start, operate, and shut down the ATV safely.

## Maintenance Guidelines

Regular maintenance is key to extending the lifespan of your Polaris Magnum

425. The owner's manual outlines a maintenance schedule, which typically includes:

- Oil Changes: Recommendations for oil type and change intervals.
- Air Filter Maintenance: Instructions on how to check and replace the air filter.
- Tire Care: Guidelines for proper tire pressure and tread inspection.
- Brake Checks: How to inspect and maintain brake systems for optimal performance.

## **Troubleshooting Tips**

Every owner will encounter issues at some point, and the owner's manual provides troubleshooting advice for common problems, such as:

- Starting Issues: What to check if the engine won't start.
- Overheating: Signs of overheating and how to address them.
- Electrical Problems: How to diagnose and fix common electrical issues.

## **Maintenance Tips for Your Magnum 425**

Proper maintenance is crucial to ensure that your Polaris Magnum 425 runs smoothly for years to come. Here are some essential maintenance tips based on the owner's manual recommendations:

### **Regular Inspections**

Perform regular inspections of various components:

- Brakes: Check the brake pads and fluid levels regularly.
- Tires: Inspect for wear and maintain proper tire pressure.
- Battery: Ensure the battery terminals are clean and free of corrosion.

### **Fluid Changes**

Changing fluids at regular intervals is vital. Consider the following:

- Engine Oil: Change every 50 hours of operation or at least once a year, whichever comes first.
- Transmission Fluid: Inspect and change according to the manual's recommendations.
- Coolant: Regularly check levels and replace as needed.

## **Cleaning and Storage**

Cleaning your ATV after use can prevent dirt and grime from causing damage. Here are some tips:

- Wash: Use a mild detergent and water, avoiding high-pressure washers that can damage seals.
- Dry: Allow your ATV to dry thoroughly before storing it.
- Storage: Store in a cool, dry place away from direct sunlight to prevent fading and deterioration.

## **Common Issues and Solutions**

Even with proper maintenance, you might face some common issues with your Polaris Magnum 425. Here are a few problems and their solutions:

### **Engine Won't Start**

If you find that your engine won't start, consider the following steps:

1. Check the Battery: Ensure the battery is charged and connections are clean.
2. Inspect Fuel: Make sure you have fresh fuel and that the fuel line is clear.
3. Examine Fuses: Look for blown fuses in the electrical system.

### **Overheating Engine**

Should your engine overheat, it could be due to:

- Low Coolant Levels: Check and refill coolant as necessary.
- Clogged Radiator: Clean the radiator to ensure proper airflow.
- Faulty Thermostat: Consider replacing the thermostat if overheating persists.

### **Poor Performance**

If you notice a drop in performance, try these solutions:

1. Replace Air Filter: A dirty air filter can restrict airflow and reduce power.
2. Check Spark Plug: Inspect and replace the spark plug if it's worn or

fouled.

3. **Inspect Fuel System:** Ensure that the fuel system is clean and functioning properly.

## **Conclusion**

In summary, the **Polaris Magnum 425 owners manual** is a vital resource for anyone looking to maximize their ATV experience. By understanding the features of the Magnum 425, adhering to the maintenance guidelines, and following troubleshooting tips, you can ensure that your ATV remains in excellent working condition. Regular care and attention to detail will not only enhance your riding experience but also extend the life of your Polaris Magnum 425, making it a reliable companion for years to come.

## **Frequently Asked Questions**

### **Where can I find the Polaris Magnum 425 owner's manual?**

You can find the Polaris Magnum 425 owner's manual on the official Polaris website or by searching for it in online forums and ATV-specific websites.

### **What is the purpose of the Polaris Magnum 425 owner's manual?**

The owner's manual provides essential information on operation, maintenance, troubleshooting, and safety guidelines for the Polaris Magnum 425 ATV.

### **Is the Polaris Magnum 425 owner's manual available in digital format?**

Yes, many Polaris owner's manuals, including the Magnum 425, are available for download in PDF format from the Polaris website or other ATV resource sites.

### **What maintenance tips are included in the Polaris Magnum 425 owner's manual?**

The manual typically includes maintenance schedules, oil change intervals, tire care, and recommendations for inspecting brakes and electrical systems.

### **How do I reset the service light on my Polaris**

## Magnum 425?

The owner's manual provides specific instructions for resetting the service light, which usually involves a sequence of key turns or button presses.

## Does the Polaris Magnum 425 owner's manual cover troubleshooting common issues?

Yes, the manual includes a troubleshooting section that addresses common problems like starting issues, electrical failures, and handling performance.

## What safety precautions are recommended in the Polaris Magnum 425 owner's manual?

The manual emphasizes wearing appropriate safety gear, ensuring proper vehicle operation, and being aware of your surroundings while riding.

## Are there any recalls or safety notices related to the Polaris Magnum 425 mentioned in the owner's manual?

Any recalls or safety notices would typically be detailed in the manual or referenced in an addendum, so it's important to check the latest version for updates.

## Can I use the Polaris Magnum 425 owner's manual for other models?

While some information may be similar, it is not recommended to use the owner's manual for other models, as specifications and maintenance procedures can vary.

Find other PDF article:

<https://soc.up.edu.ph/64-frame/Book?docid=LPO73-6675&title=vegan-food-at-trader-joes-2022.pdf>

## Polaris Magnum 425 Owners Manual

Polis Office (Polaris Office) 100 MB - 100 MB

Polis Office v9.103.88 PolarisOfficeSetup.exe / 186MB 100 MB: 2021-08-12 100 MB 100 MB 100 MB 100 MB

Polis Office Polis Office Corp OS 100 MB, 100 MB, ...

### Team-BHP - India's Most Trusted Car Reviews & News

Team-BHP takes ZERO advertising money from the auto industry, hence provides the most trusted, detailed and unbiased Car Reviews & News in India.



