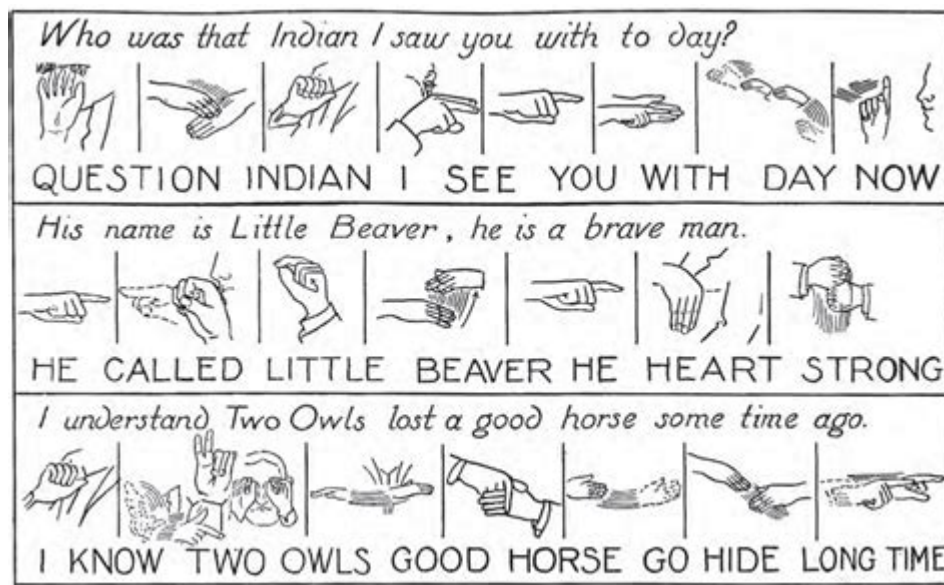


Plains Indian Sign Language



Plains Indian Sign Language (PISL) is a fascinating and intricate mode of communication that has been utilized by various Indigenous tribes of North America, particularly in the Great Plains region. This unique sign language emerged as a tool for intertribal communication, bridging the gaps between diverse languages and cultures. With its rich history, cultural significance, and practical applications, Plains Indian Sign Language plays a vital role in understanding the social dynamics and interactions of the peoples of the Great Plains.

Historical Background

Plains Indian Sign Language has its roots in the interactions among numerous tribes that inhabited the North American Great Plains, including the Sioux, Cheyenne, Arapaho, and Crow, among others. Prior to the widespread use of PISL, these tribes spoke distinct languages that could pose challenges when it came to trade, diplomacy, and social interaction.

Origins and Development

- **Intertribal Communication:** As tribes came into contact with one another for trade, negotiation, and cultural exchange, the need for a common communication system became apparent. PISL emerged as a solution, allowing individuals from different linguistic backgrounds to communicate effectively.
- **Cultural Exchange:** The use of sign language facilitated not only trade but also the sharing of stories, customs, and traditions. It became an essential part of cultural exchange in the region.

Influence of European Contact

The arrival of European settlers and traders further influenced the evolution of Plains Indian Sign Language. As Indigenous peoples interacted with newcomers, PISL adapted to incorporate new concepts and vocabulary introduced by Europeans. This interaction contributed to the language's resilience and adaptability.

Characteristics of Plains Indian Sign Language

Plains Indian Sign Language is characterized by its visual-spatial modality, making it distinct from spoken languages. The language consists of a combination of hand signs, facial expressions, and body movements, which together convey complex meanings.

Basic Features

1. **Iconicity:** Many signs in PISL are iconic, meaning they visually represent the concept they signify. For example, a sign for "bird" may mimic the flapping of wings.
2. **Simplicity and Efficiency:** PISL is designed to be straightforward, allowing for quick and efficient communication, which is essential in hunting and trading contexts.
3. **Facial Expressions:** Non-manual signals, such as facial expressions, are crucial in conveying tone, mood, and additional information, similar to the role of intonation in spoken languages.

Sign Structure and Grammar

- **Sign Order:** PISL follows a specific order in signing, typically using a subject-verb-object structure, though variations may occur depending on context.
- **Role of Context:** The meaning of a sign can change based on context and the relationship between the participants in the communication.

Usage and Applications

Plains Indian Sign Language was used in various contexts, serving both practical and cultural purposes.

Practical Applications

1. **Hunting and Gathering:** PISL allowed hunters to communicate silently, minimizing the risk of alerting game animals. Signs for animal movements, locations, and strategies could be conveyed quickly.

2. Trade and Diplomacy: In negotiations and trade, PISL provided a common ground for tribes to discuss terms, share resources, and establish agreements.
3. Storytelling: Elders used PISL to pass down traditions, myths, and histories, preserving cultural knowledge through visual storytelling.

Cultural Significance

- Identity and Unity: PISL played a significant role in fostering a sense of identity and unity among tribes, allowing them to participate in shared cultural activities despite linguistic differences.
- Artistic Expression: The use of PISL also found its place in artistic expressions, such as dance and performance, where storytelling and communication through signs became integral to cultural celebrations.

The Decline and Revitalization of PISL

Despite its rich history and significance, Plains Indian Sign Language faced challenges in the 20th century due to the impact of colonization, cultural assimilation efforts, and the decline of Indigenous languages.

Factors Contributing to Decline

1. Residential Schools: Indigenous children were often taken from their families and placed in residential schools, where they were forced to abandon their languages and cultural practices.
2. Cultural Suppression: Policies aimed at suppressing Indigenous cultures led to a decline in the use of PISL, as younger generations were less exposed to traditional practices.

Revitalization Efforts

In recent years, there has been a resurgence of interest in Plains Indian Sign Language, driven by efforts to revitalize Indigenous languages and cultures.

- Community Initiatives: Tribes and organizations are working to teach PISL to younger generations through workshops, cultural camps, and educational programs.
- Documentation and Research: Linguists and anthropologists are conducting research to document PISL, creating resources that can be used for educational purposes.

Modern Usage and Perspectives

Today, Plains Indian Sign Language is experiencing a revival, with many Indigenous

communities recognizing its importance as a cultural heritage and a vital communication tool.

Current Applications

1. Cultural Events: PISL is often used in cultural gatherings, powwows, and storytelling events where participants share their histories and traditions.
2. Educational Settings: Some schools and language programs are incorporating PISL into their curricula, promoting bilingualism and cultural awareness.

Future Prospects

The future of Plains Indian Sign Language looks promising as communities continue to embrace their heritage. By fostering intergenerational transmission of PISL, tribes are ensuring that this unique language will persist for future generations.

Conclusion

Plains Indian Sign Language stands as a testament to the ingenuity and adaptability of Indigenous peoples in North America. Its historical roots, cultural significance, and practical applications highlight the importance of this unique mode of communication in the social fabric of the Great Plains tribes. As revitalization efforts gain momentum, PISL not only preserves the language itself but also revitalizes the rich cultural heritage of the Plains Indians, ensuring that this vital aspect of their identity endures.

Frequently Asked Questions

What is Plains Indian Sign Language (PISL)?

Plains Indian Sign Language is a visual language used by various Native American tribes of the Great Plains, facilitating communication across different spoken languages.

How did Plains Indian Sign Language develop?

PISL developed as a means of communication among tribes with different languages, particularly for trade, social interaction, and during gatherings like powwows.

Is Plains Indian Sign Language still in use today?

Yes, PISL is still in use today among some Native American communities, although it faces challenges due to modernization and the declining number of fluent signers.

What are some features of Plains Indian Sign Language?

PISL includes a rich set of signs that represent objects, actions, and concepts, often incorporating movements and facial expressions to convey meaning.

How does Plains Indian Sign Language differ from American Sign Language (ASL)?

While both PISL and ASL are visual languages, they are distinct in their vocabulary, grammar, and cultural contexts, as PISL developed independently among Plains tribes.

What role does Plains Indian Sign Language play in cultural preservation?

PISL serves as an important tool for cultural preservation, helping younger generations connect with their heritage and understand traditional practices and stories.

Are there resources available for learning Plains Indian Sign Language?

Yes, there are resources such as books, online courses, and workshops offered by Native American organizations that aim to teach and promote Plains Indian Sign Language.

Find other PDF article:

<https://soc.up.edu.ph/64-frame/files?dataid=TXS44-8287&title=unlimited-power-by-tony-robbins.pdf>

Plains Indian Sign Language

Plains Indian Sign Language - Wikipedia

Map of the various sign languages spoken across Turtle Island, excluding Francosign languages. Plains Sign Language is labelled in red as Hand Talk.

Plains Sign Language camp a new spin on an old way of ... - CBC.ca

Dec 11, 2019 · Plains Sign Language is a historical means of communicating between Indigenous groups if they did not speak the same oral language. It was the focus of a multi-day language ...

Hand talk: Reclaiming Plains Indian Sign Language - Canadian ...

Jun 14, 2024 · It turns out that the signs are part of an ancient lingua franca, or common tongue, used by generations of Indigenous Peoples across the Great Plains area of North America to ...

Rediscovering Plains Indian Sign Language (PISL) - Languagest

Apr 11, 2025 · PISL, also referred to in academic literature as Hand Talk, is a manual-visual language historically used by Indigenous tribes across the Great Plains and Plateau regions, ...

Indigenous Sign Languages in Canada - The Canadian ...

Apr 17, 2020 · Plains Sign Language (PSL) (also sometimes called Plains Indigenous Sign Language) is arguably the most well-known Indigenous sign language in Canada and the ...

Plains Indian Sign Language - Museum of the Grand Prairie

Plains Indian Sign Language (PISL) was a precursor to American Sign Language (ASL) and is considered one of the oldest languages in North America. PISL or Hand Talk was used by ...

Native American Sign Language: Plains Indian Hand Talk

Apr 13, 2025 · Plains Indian Hand Talk is a complex system of visual communication used by various Plains Native American tribes. It enabled communication among groups who spoke ...

Plains Indian Sign Language - Native Languages of the Americas

Information on the Native American sign language of the Plains Indians.

Plains Indian Sign Language Explained

What is Plains Indian Sign Language? Plains Indian Sign Language is an endangered sign language common to various Plains Nations across what is now central ...

Plains Indian Sign Language - Native American Netroots

Nov 21, 2019 · "Plains Indian Sign Language is the most sophisticated of all known North American nonspeech communication systems. It consists of an extensive vocabulary of ...

Plains Indian Sign Language - Wikipedia

Map of the various sign languages spoken across Turtle Island, excluding Francosign languages. Plains Sign Language is labelled in red as Hand Talk.

Plains Sign Language camp a new spin on an old way of ... - CBC.ca

Dec 11, 2019 · Plains Sign Language is a historical means of communicating between Indigenous groups if they did not speak the same oral language. It was the focus of a multi-day language ...

Hand talk: Reclaiming Plains Indian Sign Language - Canadian ...

Jun 14, 2024 · It turns out that the signs are part of an ancient lingua franca, or common tongue, used by generations of Indigenous Peoples across the Great Plains area of North America to ...

Rediscovering Plains Indian Sign Language (PISL) - Languagest

Apr 11, 2025 · PISL, also referred to in academic literature as Hand Talk, is a manual-visual language historically used by Indigenous tribes across the Great Plains and Plateau regions, ...

Indigenous Sign Languages in Canada - The Canadian ...

Apr 17, 2020 · Plains Sign Language (PSL) (also sometimes called Plains Indigenous Sign Language) is arguably the most well-known Indigenous sign language in Canada and the ...

Plains Indian Sign Language - Museum of the Grand Prairie

Plains Indian Sign Language (PISL) was a precursor to American Sign Language (ASL) and is considered one of the oldest languages in North America. PISL or Hand Talk was used by ...

Native American Sign Language: Plains Indian Hand Talk

Apr 13, 2025 · Plains Indian Hand Talk is a complex system of visual communication used by various Plains Native American tribes. It enabled communication among groups who spoke ...

Plains Indian Sign Language - Native Languages of the Americas

Information on the Native American sign language of the Plains Indians.

Plains Indian Sign Language Explained

What is Plains Indian Sign Language? Plains Indian Sign Language is an endangered sign language common to various Plains Nations across what is now central ...

Plains Indian Sign Language - Native American Netroots

Nov 21, 2019 · “Plains Indian Sign Language is the most sophisticated of all known North American nonspeech communication systems. It consists of an extensive vocabulary of ...

Explore the rich history and unique features of Plains Indian Sign Language. Discover how this visual language enhances communication among diverse cultures. Learn more!

[Back to Home](#)