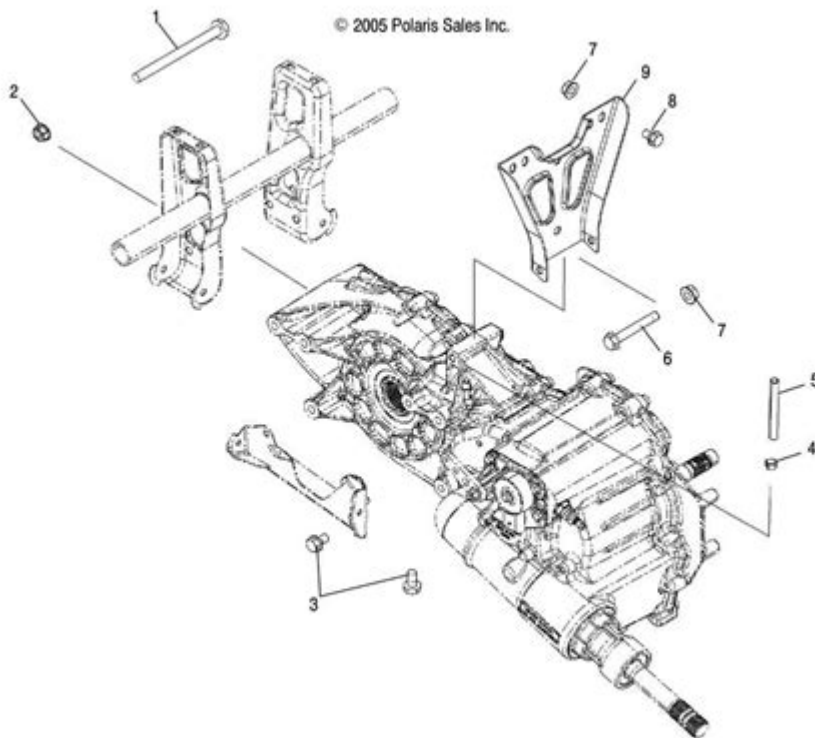


Polaris Sportsman 850 Parts Diagram



Polaris Sportsman 850 Parts Diagram is an essential resource for any owner or enthusiast of this popular all-terrain vehicle (ATV). Understanding the parts diagram can greatly enhance your ability to maintain, repair, and upgrade your Polaris Sportsman 850. This comprehensive guide provides insights into the components of the ATV, their functions, and how to navigate the parts diagram effectively.

Introduction to Polaris Sportsman 850

The Polaris Sportsman 850 is a robust and versatile ATV designed for both recreational riding and heavy-duty work. Known for its powerful engine, advanced suspension, and all-terrain capabilities, the Sportsman 850 has become a favorite among outdoor enthusiasts. The ATV is equipped with a range of features aimed at improving performance, safety, and rider comfort.

Understanding the parts diagram is crucial for anyone looking to perform maintenance or modifications. It provides a visual representation of the vehicle's components, making it easier to identify parts and their interconnections.

Understanding the Parts Diagram

A parts diagram is essentially a visual breakdown of the various components that make up the Polaris Sportsman 850. It serves several purposes:

- Identification: Helps owners identify specific parts when sourcing replacements.
- Assembly and Disassembly: Aids in understanding how parts fit together, facilitating repairs and upgrades.
- Maintenance: Provides a reference for routine checks and services.

The parts diagram typically includes the following sections:

- Engine Components
- Transmission Parts
- Suspension and Steering
- Braking System
- Electrical System
- Body and Frame

Components of the Polaris Sportsman 850

Understanding the different parts of your Polaris Sportsman 850 is vital. Here's a detailed look at various sections of the parts diagram:

1. Engine Components

The engine is the heart of the Polaris Sportsman 850, and its parts are crucial for the ATV's performance.

- Cylinder Head: Houses the combustion chamber and valves.
- Piston: Converts combustion energy into mechanical energy.
- Crankshaft: Converts the piston's linear motion into rotational motion.
- Timing Chain: Synchronizes the movement of the crankshaft and camshaft.
- Fuel Injector: Delivers fuel to the combustion chamber.

2. Transmission Parts

The transmission system is responsible for transferring power from the engine to the wheels.

- Gearbox: Contains various gears that adjust the speed and torque.
- Clutch: Engages and disengages the engine from the transmission.
- Drive Belt: Transmits power from the engine to the transmission.

- Differential: Distributes torque to the wheels, allowing them to rotate at different speeds.

3. Suspension and Steering

The suspension system affects ride quality and handling, while the steering components ensure maneuverability.

- A-Arms: Control the movement of the wheels.
- Shock Absorbers: Dampen the impact from rough terrain.
- Steering Rack: Translates the rider's input into wheel movement.
- Ball Joints: Allow for flexible movement between the steering and suspension components.

4. Braking System

Safety is paramount, and the braking system plays a critical role.

- Brake Pads: Create friction against the rotors to slow down the vehicle.
- Brake Rotors: Distribute heat and provide a surface for the brake pads.
- Master Cylinder: Converts the force from the brake lever into hydraulic pressure.
- Brake Lines: Carry hydraulic fluid to the brake calipers.

5. Electrical System

The electrical system powers various components and enhances the ATV's functionality.

- Battery: Provides electrical energy to start the engine and power accessories.
- Starter Motor: Engages the engine to initiate the starting process.
- Ignition Coil: Generates spark for combustion.
- Wiring Harness: Connects all electrical components.

6. Body and Frame

The body and frame provide structural integrity and protect internal components.

- Chassis: The main frame that supports all other components.
- Fenders: Protect the rider and components from dirt and debris.
- Footrests: Provide a stable platform for the rider's feet.

- Seat: Ensures rider comfort during operation.

Importance of Regular Maintenance

Regular maintenance is essential for the longevity and performance of your Polaris Sportsman 850. Familiarity with the parts diagram enables owners to perform routine checks and identify potential issues before they escalate. Here are some maintenance tips:

1. Regular Oil Changes: Change the engine oil every 50 hours of operation or annually, whichever comes first.
2. Check Air Filter: Inspect and clean the air filter regularly to ensure optimal airflow to the engine.
3. Inspect Tires: Check tire pressure and tread depth frequently.
4. Brake Inspection: Regularly check brake fluid levels and replace brake pads when worn.
5. Electrical Checks: Inspect battery connections and wiring for any signs of wear or damage.

Where to Find Parts Diagrams and Resources

Several resources can provide detailed parts diagrams for the Polaris Sportsman 850:

- Owner's Manual: The manual typically contains a parts diagram, along with specifications and maintenance schedules.
- Polaris Official Website: The official Polaris site often offers downloadable parts diagrams and service manuals.
- Aftermarket Parts Suppliers: Websites specializing in ATV parts often provide diagrams to help customers choose the right components.
- Online Forums and Communities: Enthusiast forums often share parts diagrams and maintenance tips, providing valuable insights from experienced users.

Conclusion

The Polaris Sportsman 850 Parts Diagram is an indispensable tool for ATV owners. By understanding the various components and their functions, you can enhance your ability to maintain and repair your vehicle effectively. Regular maintenance, informed by the parts diagram, ensures that your Sportsman 850 remains in peak condition, allowing you to enjoy the adventures it offers for years to come. Whether you are an experienced mechanic or a novice, taking the time to familiarize yourself with your ATV's parts will pay dividends in performance and reliability.

Frequently Asked Questions

What is the purpose of the Polaris Sportsman 850 parts diagram?

The parts diagram for the Polaris Sportsman 850 provides a visual representation of the ATV's components, helping users identify and understand the various parts for maintenance, repairs, and replacements.

Where can I find a reliable parts diagram for the Polaris Sportsman 850?

A reliable parts diagram can be found on the official Polaris website, authorized dealerships, or aftermarket parts suppliers that specialize in Polaris ATVs.

How do I use the Polaris Sportsman 850 parts diagram to order parts?

You can use the parts diagram by locating the specific part number you need, then referencing that number when ordering from a dealer or online parts store.

Are there any online resources for Polaris Sportsman 850 parts diagrams?

Yes, there are several online resources, including forums, dedicated ATV websites, and Polaris's own site, where you can access detailed parts diagrams for the Sportsman 850.

What should I do if I can't find a specific part in the Polaris Sportsman 850 parts diagram?

If you can't find a specific part, consider contacting a Polaris dealer for assistance or checking with online forums where experienced users might help identify the part.

Can I use the parts diagram for other Polaris models?

While some parts may be similar, each Polaris model has its own unique parts diagram, so it's best to use the diagram specifically for the Sportsman 850 to ensure accuracy.

What are some common issues that can be diagnosed

Explore our comprehensive Polaris Sportsman 850 parts diagram for easy identification and replacement. Learn more to optimize your ATV maintenance today!

[Back to Home](#)