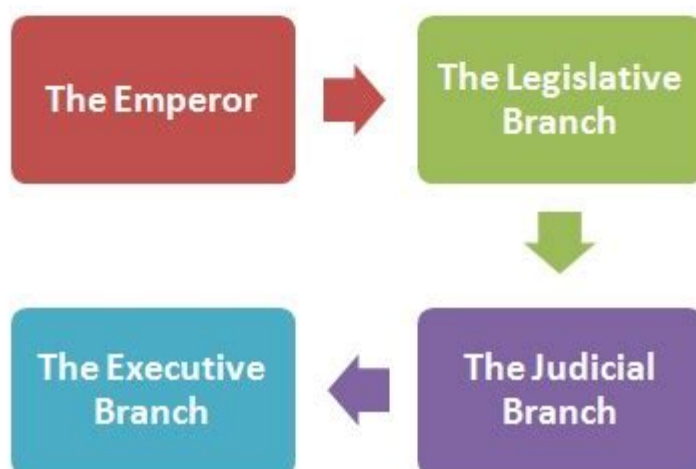
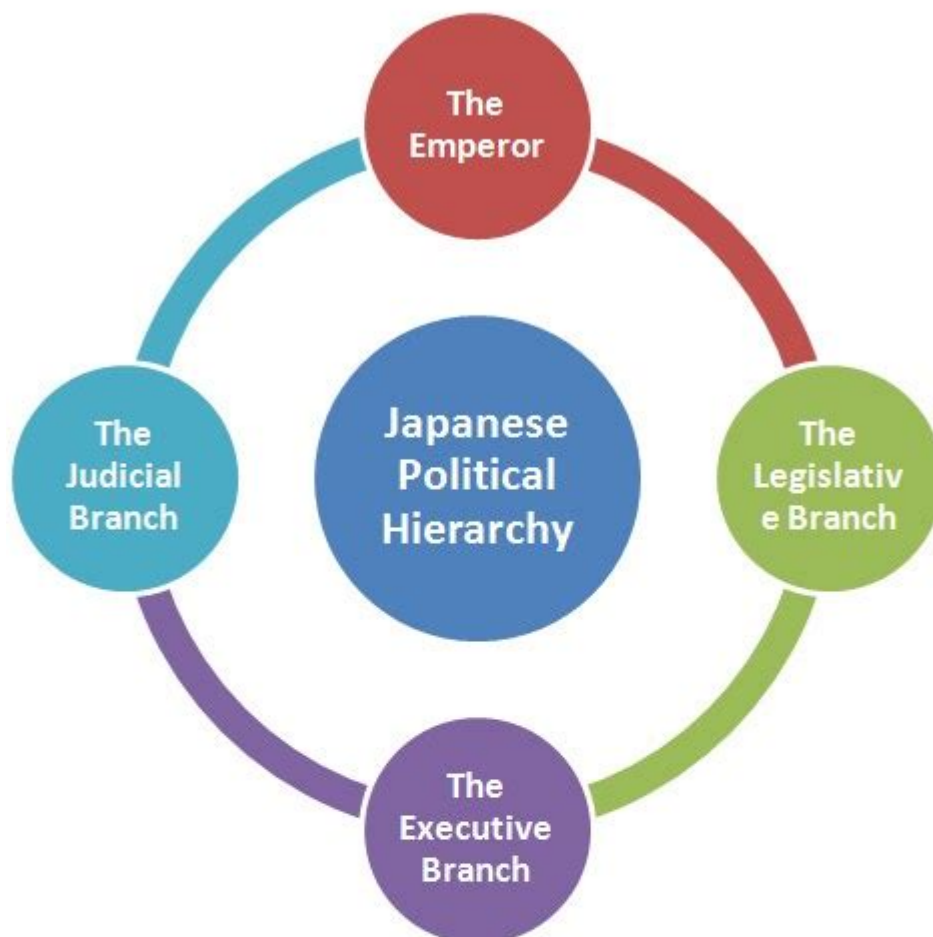


Political Structure Of Japan



hierarchystructure.com

Political structure of Japan is a fascinating blend of traditional elements and modern democratic practices that has evolved over centuries. Japan's political system is characterized by a constitutional

monarchy, where the Emperor holds a ceremonial position, while the power to govern lies primarily with elected officials. This article will delve into the intricacies of Japan's political structure, examining its historical context, key institutions, political parties, and contemporary challenges.

Historical Context

Japan's political structure has been shaped by a rich history that includes feudalism, imperial rule, and post-war reforms. Understanding this context is crucial to grasping the current political landscape.

Feudal Era and the Rise of the Samurai

- The political structure of Japan during the feudal era was dominated by the samurai class, which held power through a system of land ownership and loyalty.
- The shogunate system emerged, with shoguns acting as military rulers while the Emperor remained a figurehead.

Meiji Restoration

- In 1868, the Meiji Restoration marked a significant turning point, as power was restored to the Emperor and Japan underwent rapid modernization.
- The introduction of a constitutional government in the late 19th century laid the groundwork for contemporary political institutions.

Post-War Reforms

- After World War II, Japan adopted a new constitution in 1947, emphasizing democracy, civil rights, and the renunciation of war.
- The post-war period saw the establishment of various political parties and a shift toward a more participatory political system.

Constitution and Governance

The Constitution of Japan is the foundation of its political structure, outlining the roles and responsibilities of various branches of government.

The Constitution of Japan

- Adopted on May 3, 1947, the Constitution is known for its pacifist Article 9, which renounces war and prohibits maintaining military forces.

- The Constitution guarantees fundamental rights and freedoms for all citizens, establishing a framework for democratic governance.

Branches of Government

Japan's government is divided into three branches: the Executive, the Legislative, and the Judiciary.

1. Executive Branch

- Headed by the Prime Minister, who is elected by the National Diet (Japan's bicameral legislature).
- The Cabinet, composed of ministers chosen from Diet members, assists the Prime Minister in executing laws and managing government affairs.

2. Legislative Branch

- The National Diet consists of two houses: the House of Representatives (Shūgiin) and the House of Councillors (Sangiin).
- The House of Representatives has 465 members, elected for four-year terms, while the House of Councillors has 245 members, serving six-year terms.

3. Judiciary Branch

- The judiciary is independent and includes the Supreme Court, high courts, district courts, and family courts.
- The Supreme Court is the highest court in Japan and has the authority to interpret the Constitution and adjudicate legal disputes.

Political Parties

Japan's political landscape is dominated by a multi-party system, with several key parties playing significant roles in governance.

Major Political Parties

- Liberal Democratic Party (LDP)
 - Founded in 1955, the LDP has been the ruling party for most of the post-war period.
 - The party advocates for conservative policies, economic growth, and a strong national defense.
- Constitutional Democratic Party (CDP)
 - Established in 2017, the CDP positions itself as a center-left alternative to the LDP.
 - It emphasizes social welfare, civil rights, and environmental issues.
- Komeito
 - A coalition partner of the LDP, Komeito is a centrist party with strong ties to the Buddhist organization Soka Gakkai.
 - It focuses on social welfare, peace, and interfaith dialogue.
- Japanese Communist Party (JCP)

- One of the most prominent leftist parties in Japan, the JCP advocates for socialism and a significant reduction in military spending.

Electoral System

Japan employs a mixed electoral system that combines first-past-the-post and proportional representation.

- House of Representatives
 - 289 members are elected through single-member districts, while 176 are chosen through proportional representation.
- House of Councillors
 - Half of the 245 members are elected every three years, with 147 chosen from multi-member districts and 98 from proportional representation.

Local Government Structure

Local governance in Japan is essential for implementing national policies and addressing regional issues.

Prefectures and Municipalities

- Japan is divided into 47 prefectures, each led by an elected governor and legislature.
- Municipalities include cities, towns, and villages, each with its own mayor and council.

Roles and Responsibilities

- Local governments are responsible for various services, including education, public safety, and infrastructure.
- They receive funding from both national and local taxes, creating a collaborative relationship with the central government.

Contemporary Challenges

Japan's political structure faces several contemporary challenges that impact governance and public trust.

Demographic Issues

- Japan is experiencing a declining and aging population, leading to concerns about economic sustainability and social welfare systems.
- Policymakers are grappling with how to address labor shortages and support the elderly population.

Political Polarization

- Increasing political polarization has emerged, with significant divides between conservative and progressive ideologies.
- This polarization can hinder consensus-building and effective governance.

National Security Concerns

- Regional tensions, particularly with North Korea and China, have raised questions about Japan's defense policies and military capabilities.
- The debate over revising Article 9 of the Constitution to allow for a more robust military presence is a contentious issue.

Conclusion

The political structure of Japan is a complex and dynamic system that reflects the nation's historical evolution and cultural values. From its constitutional monarchy to its multi-party system, Japan's governance framework is designed to promote democracy and protect citizens' rights. However, as the country faces modern challenges such as demographic shifts and security concerns, the effectiveness of its political institutions will be tested. Understanding this intricate political landscape is essential for comprehending Japan's role in the global arena and the future of its democratic practices.

Frequently Asked Questions

What type of government does Japan have?

Japan has a constitutional monarchy with a parliamentary government.

Who is the current Emperor of Japan?

As of October 2023, the current Emperor of Japan is Naruhito.

What is the role of the Prime Minister in Japan?

The Prime Minister of Japan is the head of government and is responsible for overseeing the executive

branch and implementing laws.

How is the Japanese Diet structured?

The Japanese Diet is a bicameral legislature consisting of the House of Representatives and the House of Councillors.

What is the term length for members of the House of Representatives in Japan?

Members of the House of Representatives serve a term of four years, but elections can be called earlier.

What is the significance of the Japanese Constitution of 1947?

The Japanese Constitution of 1947 established Japan as a democracy and renounced war, emphasizing human rights and the rule of law.

How are political parties structured in Japan?

Japan has a multi-party system, with the Liberal Democratic Party (LDP) being the dominant party, alongside several smaller parties.

What is the role of the judiciary in Japan's political structure?

The judiciary in Japan interprets laws and ensures justice, with the Supreme Court being the highest court in the country.

How does local government function in Japan?

Local governments in Japan operate at the prefectural and municipal levels, each with their own elected officials and responsibilities.

Find other PDF article:

<https://soc.up.edu.ph/06-link/pdf?docid=onO37-2621&title=anne-boleyn-letter-to-king-henry-viii-worksheet-answers.pdf>

Political Structure Of Japan

Arctic Snow and Ice Control | Home

Not only is Arctic's commitment to its customers legendary, but it revolutionized the snow removal industry when it designed and built its own plows using its patented sectional snow plow technology, and set a new standard of excellence for the industry.

Arctic Snow and Ice Products

Arctic Snow & Ice Products Made By Snow Guys, For Snow Guys Explore our products

North America's #1 Snow Removal Machine for Buses & Trucks

What sets the Arctic Air Snow Removal System apart is its remarkably compact footprint, making it the most space-efficient snow and ice removal system available in the market. With its fully automatic operation, your drivers can stay seated and get back on the road in under a minute.

Arctic - Alta Equipment Company

Alta Equipment offers new and used Arctic snowplows, providing high-quality, reliable equipment to meet your snow removal needs. Arctic snowplows are designed for maximum durability and performance, making them ideal for clearing snow from ...

Arctic Snow and Ice Control | Our Equipment

The combination of new, reliable equipment, incredible salt savings, and the industry's top rated plow, gives Arctic an unbeatable advantage in reliability, performance and efficiency, and is largely responsible for our "AAA" service rating.

Arctic Services, LLC | East Hanover, NJ 07936 - HomeAdvisor

Arctic Services, LLC | HomeAdvisor prescreened Snow Removal Services in East Hanover, NJ.

Arctic Snow and Ice Products | Home

Arctic Snow and Ice Products®, Sectional Sno-Pusher™, snow removal products, dealer locator, arctic store, ice removal

The Best 10 Snow Removal near NJ-10, Whippany, NJ 07981 - Yelp

Best Snow Removal in NJ-10, Whippany, NJ 07981 - Mike's Landscaping and Snow Plowing, Cosco Landscaping & Masonry, NJ Home Maintenance Services, Two Brothers Landscaping, Green Care Tree Services, Anthony Agudelo Lawn Care, Alpine Tree, Snowblowing Backup Service, Cashman Landscape Management, Husky Landscaping & Construction

Mike's Landscaping & Snow Removal

We offer landscaping services in northern New Jersey from site design plans by one of our design professionals, to yearly lawn maintenance programs, custom masonry to snow removal.

About - Arctic Air Snow Removal Systems

We are committed to providing innovative, high-pressure air solutions for quick, damage-free snow removal. By minimizing downtime and maximizing operational safety, we aim to support fleet managers in maintaining smooth and secure operations through the ...

Trump is being outsmarted by Putin and Xi - MSN

14 hours ago · Late last year as he was campaigning to return to the White House, Donald Trump said that if elected, he would work hard to “ununite” China and Russia. Foreign policy experts have dubbed this ...

Trump is being outsmarted by Putin and Xi - inews.co.uk

9 hours ago · ANALYSIS Trump is being outsmarted by Putin and Xi It is in China's interest for Russia's war in Ukraine to continue so America does not turn its full attention to Beijing's manoeuvres in the Indo ...

Trump Turbocharges His Putin Threat After Being Relentlessly ...

21 hours ago · President Donald Trump said he will reduce a previous 50-day deadline he issued to Vladimir Putin to reach a peace deal with Ukraine after admitting the Russian leader seems to have no intention of complying with it. While speaking to reporters alongside British Prime Minister Keir

Starmer during his visit to Scotland, Trump said he was “disappointed” with Putin and ...

Donald Trump Threatened Putin and Xi He Would Bomb ...

Jul 9, 2025 · The newly released audio captured Trump talking about his conversations with Putin and Xi.

Trump ‘very disappointed’ with Putin as he says he’s cutting short ...

1 day ago · Trump had set a 50-day deadline starting 15 July for Putin to avoid what he described as “very severe tariffs” during a meeting in the Oval Office with Nato Secretary-General Mark Rutte.

Why Trump Suddenly Sounds Tougher on Russia - The Atlantic

Jul 14, 2025 · President Donald Trump is finally taking the fight to Vladimir Putin. Sort of. For now. Trump’s deference to Russia’s authoritarian leader has been one of the most enduring geopolitical ...

Trump and foreign policy: Bold promises, unmet goals - Los ...

Jul 20, 2025 · Trump has a soft spot for foreign strongmen like Putin and China’s Xi Jinping, and has abandoned the long-standing U.S. policy of fostering democracy abroad, Kagan noted.

Ukraine war: Donald Trump’s strange affair with Vladimir Putin and Xi ...

Mar 20, 2025 · With Donald Trump in the White House, geopolitics has returned to the realm of great power relations. The post-World War II Western world’s network of alliances centred on the United States, is...

Trump tries to rewrite history on being ‘fooled’ by Putin

Jul 15, 2025 · It remains to be seen just how lasting and severe President Donald Trump’s turn against Vladimir Putin will be. Trump has criticized the Russian president in unprecedented terms in recent days ...

Xi and Putin vie to exploit the second Trump age

Feb 26, 2025 · Putin has attempted to exploit Trump’s personal vulnerabilities in recent months. He has praised Trump’s “courage, as a man” in his response to the assassination attempt against him last July, and played up to Trump’s claims that the Ukraine war might not have started if he had been in power.

Explore the political structure of Japan

[Back to Home](#)