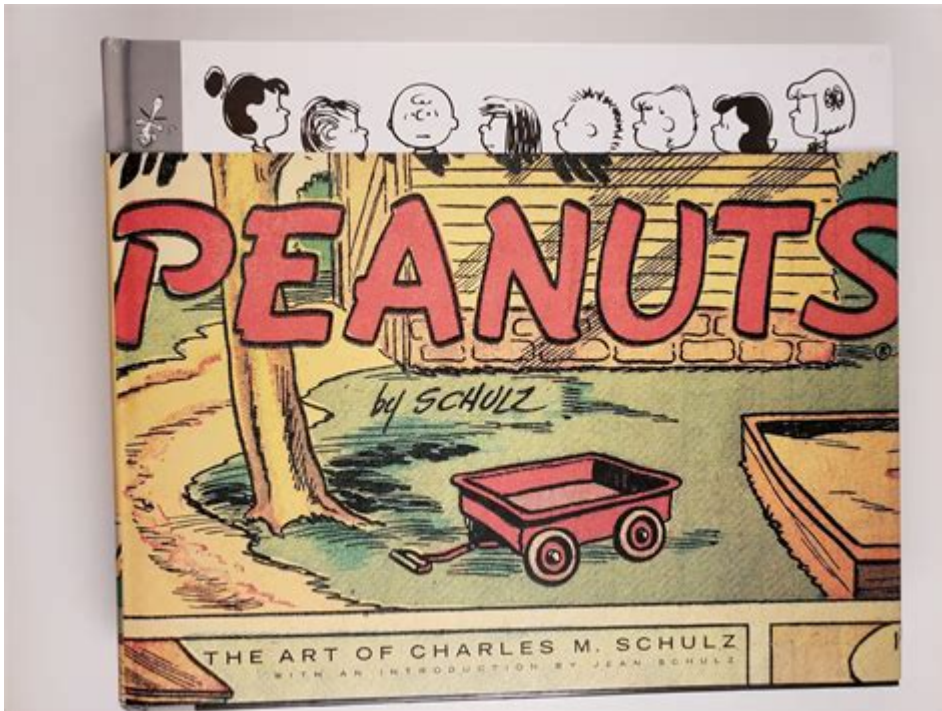


Peanuts The Art Of Charles M Schulz



Peanuts the Art of Charles M. Schulz

The beloved comic strip "Peanuts," created by Charles M. Schulz, has left an indelible mark on popular culture since its debut in 1950. With its charming characters and poignant storytelling, "Peanuts" delves into the complexities of childhood, friendship, and the human experience. Schulz's unique artistic style and insightful narratives have not only entertained generations but have also offered profound reflections on life, making "Peanuts" a timeless piece of art.

Origins of Peanuts

Charles M. Schulz, born on November 26, 1922, in Minneapolis, Minnesota, began drawing at a young age. His early influences included comic strips like "Little Nemo" and "The Katzenjammer Kids." After serving in World War II, Schulz returned to his passion for cartooning and created "Peanuts," which first appeared in seven newspapers on October 2, 1950. The strip featured a cast of children, including the iconic Charlie Brown and his pet beagle, Snoopy.

The Evolution of Characters

The characters of "Peanuts" have become household names, each representing different aspects of childhood and human emotions. Some of the most notable figures include:

1. Charlie Brown: The everyman character, often characterized by his perpetual bad luck and anxiety. He embodies the struggles and insecurities faced by many.

2. Snoopy: Charlie Brown's imaginative and adventurous beagle, who often daydreams of becoming a World War I flying ace. Snoopy represents freedom and creativity.
3. Lucy van Pelt: The bossy and opinionated girl who often dispenses unsolicited advice, Lucy reflects the complexities of friendships and personal conflicts.
4. Linus van Pelt: Lucy's younger brother, known for his security blanket and philosophical musings. Linus represents intellect and emotional depth.
5. Peppermint Patty: A tomboyish girl who is confident and athletic. She challenges traditional gender roles and showcases the diversity of personalities within the strip.

Artistic Style and Techniques

Schulz's artistic style is characterized by its simplicity and expressiveness. The following elements define his unique approach:

Line Art and Minimalism

- Clean Lines: Schulz's use of clean, bold lines gives his characters a distinct and recognizable appearance.
- Minimal Backgrounds: The backgrounds in "Peanuts" are often minimal, allowing the focus to remain on the characters and their interactions.
- Expressive Faces: Despite their simplicity, the characters' facial expressions convey a wide range of emotions, making them relatable to readers.

Use of Space and Composition

- Panel Layout: Schulz often used a four-panel layout, providing a clear structure for storytelling while allowing for the development of jokes and themes.
- Visual Humor: The juxtaposition of text and images creates a dynamic interplay that enhances the comedic effect of the strip.

Thematic Depth

While "Peanuts" is often seen as lighthearted, it explores profound themes that resonate with readers of all ages.

Childhood and Innocence

Schulz captures the essence of childhood by portraying the joys and challenges that come with growing up. The characters navigate friendships, crushes, and fears, reflecting the universal experiences of childhood.

Existential Questions

Many "Peanuts" strips delve into existential themes. Characters grapple with questions about purpose, identity, and the inevitability of failure. For instance:

- Charlie Brown's Struggles: His ongoing battle with self-doubt and failure serves as a reminder of the human condition.
- Linus and the Great Pumpkin: Linus's unwavering faith in the Great Pumpkin symbolizes hope and belief, despite the lack of evidence.

Friendship and Relationships

The relationships between the characters are central to the narrative of "Peanuts." Schulz illustrates the complexities of friendship through:

- Support and Conflict: Characters often support one another while also experiencing conflicts, mirroring real-life friendships.
- Unrequited Love: Charlie Brown's infatuation with the Little Red-Haired Girl highlights the challenges of unreciprocated feelings.

Cultural Impact and Legacy

The influence of "Peanuts" extends beyond the comic strip, permeating various aspects of culture and society.

Merchandising and Media

- Animated Specials: The "Peanuts" characters have been featured in numerous animated television specials, such as "A Charlie Brown Christmas" and "It's the Great Pumpkin, Charlie Brown," which have become holiday traditions.
- Merchandise: The characters have appeared on a wide range of merchandise, from toys to clothing, establishing "Peanuts" as a cultural phenomenon.

Literary and Artistic Recognition

Schulz's work has been recognized as a significant contribution to the art of cartooning. He has received numerous awards, including:

- National Cartoonists Society Reuben Award: A prestigious award recognizing excellence in cartooning.
- The Eisner Award: For contributions to the comic book industry.

Schulz's Personal Life and Philosophy

Charles M. Schulz's personal experiences heavily influenced his work. His upbringing, struggles with self-esteem, and reflections on human nature are evident in the themes of "Peanuts."

Influence of Family and War

- Family Background: Schulz's relationship with his family, particularly his father, shaped his perspectives on love and disappointment.
- World War II Experience: His service in the war exposed him to the hardships of life, which he translated into the universal struggles of his characters.

Philosophy of Life

Schulz often expressed his belief in the importance of kindness, empathy, and understanding. These values are woven into the fabric of "Peanuts," as characters navigate their relationships and confront their fears.

Conclusion

"Peanuts" remains a monumental work of art that transcends generations, offering laughter, wisdom, and comfort. Charles M. Schulz's ability to capture the intricacies of human emotion and the innocence of childhood through simple yet profound storytelling has solidified his place in the pantheon of great artists. The legacy of "Peanuts" continues to thrive, reminding us all of the joys and challenges of life, and the importance of friendship and understanding in an ever-changing world.

Frequently Asked Questions

What are the main themes explored in 'Peanuts' by Charles M. Schulz?

The main themes in 'Peanuts' include friendship, loneliness, anxiety, and the complexities of childhood, often depicted with humor and poignancy.

How did Charles M. Schulz's personal experiences influence his work on 'Peanuts'?

Schulz's own experiences with insecurity, social anxiety, and his childhood shaped the characters and storylines in 'Peanuts', making them relatable and authentic.

Which character in 'Peanuts' is considered the most iconic and why?

Charlie Brown is often considered the most iconic character due to his relatable struggles, optimism despite adversity, and the universal themes of failure and perseverance.

What impact did 'Peanuts' have on popular culture?

'Peanuts' has had a profound impact on popular culture, influencing comic strips, television specials, merchandise, and even philosophical discussions, making it a staple of American culture.

How did Schulz address social issues through 'Peanuts'?

Schulz subtly addressed social issues such as discrimination, mental health, and war, often using humor and the innocence of children to convey deeper messages.

What is the significance of the character Snoopy in 'Peanuts'?

Snoopy serves as a whimsical contrast to Charlie Brown's seriousness, embodying imagination and freedom, while also exploring themes of identity and adventure.

How is 'Peanuts' relevant to today's society?

'Peanuts' remains relevant today as it addresses universal human experiences such as love, loss, and the quest for happiness, resonating with audiences across generations.

What artistic style did Charles M. Schulz use in 'Peanuts'?

Schulz's artistic style is characterized by simple line drawings, expressive characters, and minimalistic backgrounds, which effectively convey emotions and themes.

How has 'Peanuts' been adapted into other media over the years?

'Peanuts' has been adapted into numerous media, including animated television specials, feature films, stage plays, and merchandise, expanding its reach and impact.

Find other PDF article:

<https://soc.up.edu.ph/52-snap/files?dataid=RSI81-1278&title=scientific-inquiry-worksheet-answers.pdf>

Peanuts The Art Of Charles M Schulz

PNAS 111(10):3531-3536, 2014. doi:10.1073/pnas.1316001111.

PNAS

