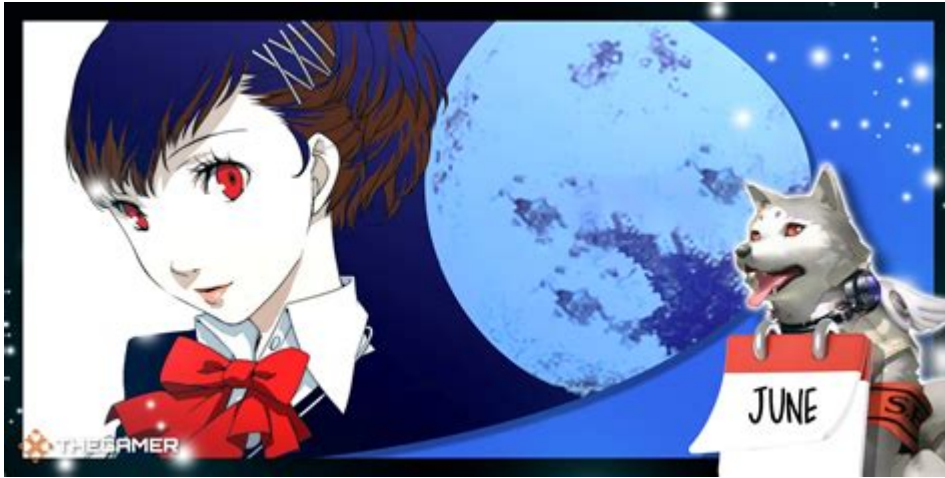


# Persona 3 100 Guide



**Persona 3 100 Guide** is an essential resource for both newcomers and veterans of the Persona series. This comprehensive guide will delve deep into the mechanics, characters, and strategies that make Persona 3 a beloved title in the role-playing game (RPG) genre. Whether you're looking for tips on navigating the Dark Hour, optimizing your social links, or mastering combat, this guide has you covered. Dive into the world of S.E.E.S. and discover how to make the most out of your experience in this iconic game.

## Understanding Persona 3

Persona 3 is a unique blend of traditional RPG elements and life simulation gameplay. Set in the fictional city of Iwatodai, players assume the role of a high school student who joins a group called S.E.E.S. (Specialized Extracurricular Execution Squad) to fight mysterious creatures known as Shadows during a hidden time period called the Dark Hour.

## The Dark Hour

The Dark Hour is a critical aspect of Persona 3, where the protagonist and their allies battle Shadows. Here are some key features:

- **Combat Mechanics:** Players must learn to use Personas effectively, leveraging their strengths and weaknesses against enemies.
- **Exploration:** The game features Tartarus, a massive tower filled with Shadows and challenges that players must navigate.
- **Time Management:** The Dark Hour is only a part of the day; players must balance dungeon crawling with school life and social activities.

# Character Development

Character development is a core component of Persona 3. Players can forge bonds with other characters, enhancing their abilities and unlocking new Personas. These relationships, known as Social Links, have a significant impact on the gameplay experience.

## Social Links Overview

Social Links are categorized into various Arcana, each representing a different aspect of life and relationships. Building these links will not only boost your character's stats but also enhance the Personas you can fuse. Here's a list of some important Social Links:

1. **The Fool:** The protagonist's journey and growth.
2. **The Lovers:** Relationships and emotional connections, often involving key characters like Yukari.
3. **The Magician:** Mentorship and guidance, frequently associated with characters like Fuuka.
4. **The Strength:** Personal resilience and overcoming challenges.
5. **The Death:** Exploring themes of mortality and the unknown.

## Combat Strategies

Combat in Persona 3 involves turn-based mechanics where players can summon Personas to battle Shadows. Mastering combat is essential for success in Tartarus and other encounters.

## Building Your Party

Selecting the right party members and Personas is vital for effective combat. Consider these tips when building your party:

- **Balance:** Ensure a mix of physical and magical attackers to cover all enemy weaknesses.
- **Elemental Coverage:** Use Personas with diverse elemental abilities to exploit

enemy vulnerabilities.

- **Support Roles:** Include characters who can heal or buff party members to enhance survivability.

## Persona Fusion

Fusing Personas is another crucial aspect of the game. By combining different Personas, players can create more powerful entities with unique abilities. Here are some guidelines for effective fusion:

1. **Know Your Personas:** Familiarize yourself with the strengths and weaknesses of your existing Personas.
2. **Experiment:** Try different combinations to discover hidden Personas and powerful abilities.
3. **Maintain a Balanced Team:** Ensure that your fused Personas cover a wide range of elemental attacks and support abilities.

## Navigating Tartarus

Tartarus serves as the primary dungeon in Persona 3, filled with various floors and challenges. Efficient navigation is key to conquering this labyrinthine tower.

## Floor Management

Each floor of Tartarus presents unique enemies and challenges. Follow these tips for effective floor management:

- **Map Exploration:** Explore each floor thoroughly to uncover treasure chests and hidden paths.
- **Enemy Encounters:** Be strategic about engaging with Shadows; avoid unnecessary battles to conserve resources.
- **Floor Levels:** Pay attention to the level of enemies on each floor and adjust your party accordingly.

# Resource Management

Managing resources, such as health and items, is crucial for survival in Tartarus. Keep the following in mind:

1. **Item Usage:** Use healing items wisely; don't waste them on minor injuries.
2. **SP Conservation:** Conserve your SP for critical battles; use physical attacks when possible.
3. **Save Frequently:** Utilize save points to prevent losing progress and to recover health and SP.

## Maximizing Your Playthrough

To fully enjoy Persona 3, players should aim for a well-rounded experience that includes combat, character development, and social interactions.

## Tips for an Effective Playthrough

Here are some strategies to maximize your playthrough:

- **Plan Your Schedule:** Balance dungeon crawling with social activities to enhance Social Links.
- **Engage with NPCs:** Take the time to talk to various characters in Iwatodai to unlock side quests and additional content.
- **Replayability:** Consider multiple playthroughs to experience different Social Link paths and outcomes.

## Conclusion

The **Persona 3 100 Guide** provides a comprehensive roadmap for players looking to navigate the complexities of this beloved RPG. From mastering combat mechanics to developing rich character relationships, this guide serves as a valuable tool for enhancing your experience in the world of Persona 3. Whether you're a seasoned player or just starting your journey, these insights will help you make the most of your time in Iwatodai.

and beyond. Embrace the journey, confront your fears, and discover the true essence of friendship and growth in this unforgettable game.

## **Frequently Asked Questions**

### **What is the main objective of the Persona 3 100 guide?**

The main objective of the Persona 3 100 guide is to provide comprehensive strategies and tips for mastering the game, including character development, social links, and optimal dungeon exploration.

### **How does the Persona 3 100 guide help with character builds?**

The guide offers detailed recommendations for character builds, including skill customization, optimal persona fusion, and leveling strategies to maximize each character's potential.

### **Does the Persona 3 100 guide cover social links?**

Yes, the guide includes in-depth information on social links, including which characters to prioritize, the best dialogue choices, and how to efficiently max out each social link.

### **What tips does the Persona 3 100 guide provide for dungeon crawling?**

The guide provides tips for effective dungeon crawling, such as enemy weaknesses, optimal party compositions, and how to manage resources like health and SP during exploration.

### **Are there any strategies in the Persona 3 100 guide for boss fights?**

Yes, the guide includes specific strategies for each boss fight, detailing their attack patterns, weaknesses, and recommended team setups for defeating them efficiently.

### **Is there a section in the Persona 3 100 guide dedicated to persona fusion?**

Absolutely, the guide features a dedicated section on persona fusion, explaining how to create powerful personas, recommended combinations, and the benefits of different fusion methods.

### **Does the Persona 3 100 guide include information about the game's endings?**

Yes, the guide discusses the various endings of the game, outlining the choices that lead to

each ending and how to achieve the best possible outcome.

## Can beginners benefit from the Persona 3 100 guide?

Yes, beginners can greatly benefit from the guide as it breaks down complex game mechanics, provides step-by-step strategies, and helps them navigate the early stages of the game.

## How frequently is the Persona 3 100 guide updated?

The Persona 3 100 guide is regularly updated to reflect the latest strategies, community tips, and any new findings that enhance gameplay experience.

Find other PDF article:

<https://soc.up.edu.ph/62-type/pdf?dataid=sHn59-2465&title=time-worksheets-5-minute-intervals.pdf>

## Persona 3 100 Guide

*persona*□□□□□□□□□□□□□□ - □□

persona0 persona1 persona2 persona3 persona4 persona5 persona6 persona7 persona8 persona9  
 persona10 persona11 persona12 persona13 persona14 persona15 persona16 persona17 persona18 persona19  
 persona20 persona21 persona22 persona23 persona24 persona25 persona26 persona27 persona28 persona29  
 persona30 persona31 persona32 persona33 persona34 persona35 persona36 persona37 persona38 persona39  
 persona40 persona41 persona42 persona43 persona44 persona45 persona46 persona47 persona48 persona49  
 persona50 persona51 persona52 persona53 persona54 persona55 persona56 persona57 persona58 persona59  
 persona60 persona61 persona62 persona63 persona64 persona65 persona66 persona67 persona68 persona69  
 persona70 persona71 persona72 persona73 persona74 persona75 persona76 persona77 persona78 persona79  
 persona80 persona81 persona82 persona83 persona84 persona85 persona86 persona87 persona88 persona89  
 persona90 persona91 persona92 persona93 persona94 persona95 persona96 persona97 persona98 persona99  
 ...

## □□□□□□ (Persona)? - □□

Personen ...

Pc□□□□□□□5□□□□□□□□□□□□□□□□ ...

Feb 17, 2023 · Denuvo 100% ...

□□□□□□□□□□□□ **persona** □□□□□□□□ ...

Oct 16, 2019 · Persona   ...

Intel (R) UHD Graphics - 0000000000000000

Feb 13, 2025 · 1080p 60FPS UHD 10bit HDR i7-11700 16GB RAM UHD 750 32GB SSD 256GB 1.3GHz ...

□□□□ **persona** □□□□□□ **persona** □□□□□□

Dec 28, 2017 · persona[ ] p[ ]  
[ ] persona[ ] ...

5 *persona* - -

5 Persona

**Terminal** **MAC** **mobaxterm** -

Terminal[...x11[crash[mobaxterm[ssh[

**persona**[...] -

Persona[...]  
...

[...]5[...] -

Oct 14, 2020 · P5 [...] P5R ([...]5[...]) [Persona[...]-[...]  
[P5[...]

*persona*[...] -

persona[...][...] persona[...][...]persona[...][...]persona5[...][...]5[...]  
[...]

[...] (*Persona*)? -

[...]Persona[...][...]  
...

*Pc*[...]5[...]

Feb 17, 2023 · [...]D[...][...]Denuvo[...]  
[...100%]

[...]*persona*[...]

Oct 16, 2019 · Persona[...]  
[...]

**Intel (R) UHD Graphics**[...] -

Feb 13, 2025 · [...]UHD[...][...]i7-11700[...][...]UHD 750[32 [ ...  
[256 [1.3GHz [

[...]**persona**[...][...]**persona**[...]

Dec 28, 2017 · persona[...][...]p[...]  
[persona[...]

[...]5[...]**persona**[...]-[...] -

[...]5[...][Persona[...]

*Terminal*[...]MAC[...][...]*mobaxterm*[...] -

Terminal[...x11[crash[mobaxterm[ssh[

**persona**[...] -

Persona[...]  
...

[...]5[...] -

Oct 14, 2020 · P5 [...] P5R ([...]5[...]) [Persona[...]-[...]  
[P5[...]

Unlock the secrets of Persona 3 with our comprehensive 100 guide! Master gameplay

[Back to Home](#)