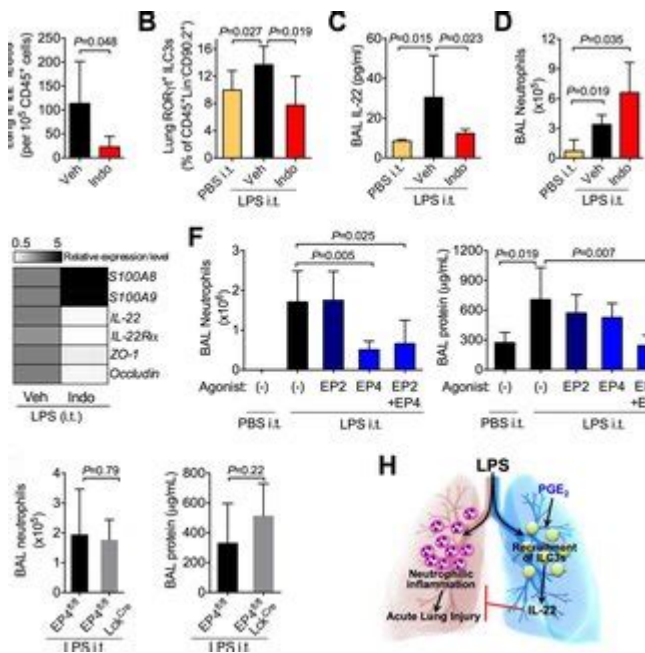


# Pge Ptb Test Answers



**PGE PTB test answers** are critical for students who are preparing for the PGE (Post Graduate Entrance) exams, particularly in the field of engineering, and specifically the PTB (Pre-Test Basics) section. This test evaluates a candidate's understanding of fundamental concepts necessary for success in postgraduate studies. Given its importance, many students seek out resources and guidance to prepare effectively and enhance their chances of performing well. In this article, we will explore the PGE PTB test, its structure, study strategies, and common types of questions, along with providing insights on how to find and interpret answers.

## Understanding the PGE PTB Test

The PGE PTB test is designed to assess a student's foundational knowledge in various subjects relevant to their chosen field of study. It often covers topics such as mathematics, physics, chemistry, and engineering principles.

## Purpose of the PGE PTB Test

The primary objectives of the PGE PTB test include:

1. Assessing Fundamental Knowledge: To ensure that candidates possess the essential knowledge required for advanced study.
2. Identifying Strengths and Weaknesses: To help students identify areas in which they may need further study or improvement.
3. Standardizing Admission: To provide a standardized measure for educational institutions to evaluate candidates.

# Structure of the PGE PTB Test

The test typically consists of multiple-choice questions (MCQs), short answer questions, and problem-solving tasks. Here's a breakdown of its structure:

- Multiple-Choice Questions: These questions test a student's quick recall and understanding of key concepts.
- Short Answer Questions: These require students to provide concise explanations or calculations based on given problems.
- Problem-Solving Tasks: These assess a candidate's ability to apply their knowledge to real-world situations.

The number of questions and the duration of the test can vary depending on the institution administering it, but candidates can generally expect a comprehensive evaluation of their knowledge.

## Study Strategies for the PGE PTB Test

Preparing for the PGE PTB test can be daunting, but with the right strategies, students can enhance their understanding and confidence. Here are some effective study techniques:

### 1. Understand the Test Format

Familiarize yourself with the test format, types of questions, and the subjects covered. This knowledge will help you focus your study efforts on the most relevant topics.

### 2. Create a Study Plan

Develop a structured study plan that allocates time for each subject area. Ensure that your plan includes:

- Daily Study Goals: Set achievable goals for each study session.
- Review Sessions: Schedule regular reviews to reinforce your understanding.
- Practice Tests: Include practice exams to simulate test conditions.

### 3. Utilize Study Resources

Gather a variety of study materials, including:

- Textbooks: Use standard textbooks relevant to your field.
- Online Courses: Enroll in online courses that offer lessons on PGE PTB topics.
- Past Papers and Sample Questions: Practice with previous years' papers to familiarize yourself with

the question format.

## **4. Join Study Groups**

Collaborating with peers can enhance your learning experience. Consider joining or forming study groups where you can:

- Discuss challenging concepts.
- Share resources and materials.
- Take turns quizzing each other.

## **5. Focus on Weak Areas**

Identify your weak areas and dedicate extra time to mastering those topics. Utilize additional resources such as supplementary books or online videos that explain complex concepts in detail.

# **Common Types of Questions in the PGE PTB Test**

Understanding the common types of questions can significantly aid your preparation. Below are examples of question categories you may encounter:

## **1. Conceptual Questions**

These questions assess your understanding of core principles. For example:

- Explain the concept of entropy in thermodynamics.
- What is the difference between AC and DC current?

## **2. Calculation-Based Questions**

These require you to perform calculations based on given data. Example questions include:

- Calculate the force exerted by a mass of 10 kg under gravity.
- If the voltage is 220 V and the resistance is 10 ohms, what is the current?

## **3. Application-Based Questions**

These questions test your ability to apply concepts in practical scenarios. For instance:

- Describe how you would design a simple circuit to light a bulb.
- Given a set of data, how would you determine the best material for insulation in a thermal system?

## **Finding and Interpreting PGE PTB Test Answers**

Once you have completed your preparation, it's important to know how to find and interpret the answers to practice tests or previous exam papers.

### **1. Official Resources**

Check the official website of the educational institution for any provided resources, including:

- Sample questions
- Answer keys
- Study guides

These resources are often curated by the institution and can provide reliable information.

### **2. Online Forums and Study Groups**

Utilizing online forums such as Reddit, or dedicated Facebook groups can help you connect with other students. You can exchange answers, discuss difficult questions, and clarify doubts.

### **3. Educational Websites and YouTube Channels**

Many educational platforms offer detailed explanations and answers for various subjects. Look for:

- Khan Academy: For comprehensive lessons on math and science.
- YouTube: Channels dedicated to engineering concepts often provide visual explanations of complex topics.

### **4. Review with Peers**

After attempting practice questions, collaborate with peers to review answers and discuss different approaches to solving questions. This not only reinforces learning but also exposes you to various problem-solving strategies.

# Conclusion

In conclusion, the PGE PTB test is an essential component of the postgraduate admission process in engineering fields, and understanding how to prepare effectively is key to success. By familiarizing yourself with the test structure, utilizing effective study strategies, and practicing various types of questions, you can enhance your chances of achieving a favorable result. Remember to leverage available resources and collaborate with peers to maximize your understanding and confidence. Ultimately, diligent preparation will not only help you with the PGE PTB test but will lay a solid foundation for your future studies and career in engineering.

## Frequently Asked Questions

### **What is the purpose of the PGE PTB test?**

The PGE PTB test is designed to evaluate an individual's proficiency in various skills relevant to a specific field, often used in professional certifications.

### **How can I find answers for the PGE PTB test?**

Answers for the PGE PTB test can typically be found in study guides, official preparation materials, or through authorized training programs.

### **Are there any official resources for PGE PTB test preparation?**

Yes, official resources are usually provided by the organization that administers the test, including study guides, practice exams, and online courses.

### **What topics are covered in the PGE PTB test?**

The PGE PTB test generally covers topics such as technical knowledge, problem-solving skills, and industry-specific regulations.

### **Is it possible to retake the PGE PTB test if I do not pass?**

Yes, candidates can usually retake the PGE PTB test after a specified waiting period, but policies may vary by organization.

### **What study strategies are recommended for the PGE PTB test?**

Recommended study strategies include reviewing official materials, taking practice tests, joining study groups, and focusing on weak areas.

### **How long does it take to receive PGE PTB test results?**

Results for the PGE PTB test are typically available within a few weeks after the test date, but this may vary depending on the administering body.

## Are there forums or communities for discussing PGE PTB test experiences?

Yes, many online forums and communities exist where individuals can share their experiences and tips regarding the PGE PTB test.

## What should I bring on the day of the PGE PTB test?

On the day of the PGE PTB test, you should bring valid identification, any required materials specified by the test administrator, and a positive mindset.

Find other PDF article:

<https://soc.up.edu.ph/36-tag/pdf?ID=BNK30-2413&title=kuta-software-infinite-calculus-evaluating-limits-worksheet-answers.pdf>

## Pge Ptb Test Answers

### **Polska Grupa Energetyczna SA (PGE) - Notowania GPW - Ban...**

Polska Grupa Energetyczna SA (PGE) - najnowsze wiadomości, aktualne notowania, forum dyskusyjne, ...

### **PGE POLSKA GRUPA ENERGETYCZNA S.A.: Odpowi...**

Jul 12, 2025 · PGE POLSKA GRUPA ENERGETYCZNA S.A.: Odpowiedzi na pytania zadane przez akcjonariuszy ...

### *PGE POLSKA GRUPA ENERGETYCZNA S.A.: Informa...*

Jul 7, 2025 · Zarząd spółki PGE Polska Grupa Energetyczna S.A. („PGE”) informuje o identyfikacji przesłanek ...

### **PGE POLSKA GRUPA ENERGETYCZNA S.A.: Przyjęci...**

Jun 12, 2025 · PGE POLSKA GRUPA ENERGETYCZNA S.A.: Przyjęcie nowej Strategii Grupy PGE do 2035 roku

### PGE Baltica, CRIST, WIKE i GP Baltic chcą współpracy przy j...

Jun 24, 2025 · PGE Baltica podpisała z CRIST i jej spółką celową WIKE oraz z Grupą Przemysłową Baltic list ...

### **Polska Grupa Energetyczna SA (PGE) - Notowania GPW - Bankie...**

Polska Grupa Energetyczna SA (PGE) - najnowsze wiadomości, aktualne notowania, forum dyskusyjne, ...

### **PGE POLSKA GRUPA ENERGETYCZNA S.A.: Odpowied...**

Jul 12, 2025 · PGE POLSKA GRUPA ENERGETYCZNA S.A.: Odpowiedzi na pytania zadane przez akcjonariuszy ...

*PGE POLSKA GRUPA ENERGETYCZNA S.A.: Informacj...*

Jul 7, 2025 · Zarząd spółki PGE Polska Grupa Energetyczna S.A. („PGE”) informuje o identyfikacji przesłanek do ...

*PGE POLSKA GRUPA ENERGETYCZNA S.A.: Przyjęcie n...*

Jun 12, 2025 · PGE POLSKA GRUPA ENERGETYCZNA S.A.: Przyjęcie nowej Strategii Grupy PGE do 2035 roku

*PGE Baltica, CRIST, WIKE i GP Baltic chcą współpracy przy jed...*

Jun 24, 2025 · PGE Baltica podpisała z CRIST i jej spółką celową WIKE oraz z Grupą Przemysłową Baltic list ...

Unlock the secrets to success with our comprehensive guide on PGE PTB test answers. Discover how to ace your exam today! Learn more now!

[Back to Home](#)