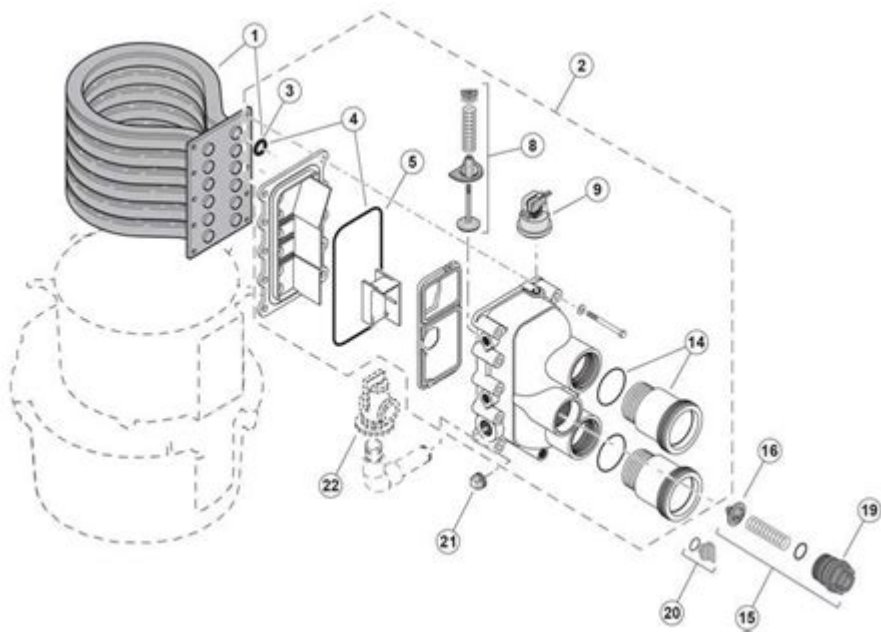


# Pentair Sm 20 2 Manual



## Pentair SM 20 2 Manual

The Pentair SM 20 2 is a highly efficient and versatile water treatment solution designed for residential and commercial applications. Understanding how to operate, maintain, and troubleshoot this device is essential for ensuring optimal performance and longevity. This article provides a comprehensive overview of the Pentair SM 20 2 manual, covering its features, installation process, operational guidelines, maintenance tips, and troubleshooting techniques.

## Introduction to Pentair SM 20 2

The Pentair SM 20 2 is a state-of-the-art water softener that employs advanced technologies to remove hard minerals from water. This unit is equipped with durable components and designed to provide soft water efficiently and effectively. It is particularly popular in areas where hard water is a common issue, leading to scale buildup in plumbing and appliances.

## Key Features

The Pentair SM 20 2 is known for several standout features:

- High Capacity: The unit is capable of processing a significant volume of water, suitable for both small and large households.

- **User-Friendly Interface:** The control panel is designed for easy navigation, allowing users to adjust settings and monitor performance effortlessly.
- **Efficient Regeneration:** The SM 20 2 utilizes a smart regeneration process that minimizes water and salt usage, making it eco-friendly.
- **Durability:** Built with high-quality materials, the system ensures long-lasting performance and reliability.
- **Compact Design:** The unit's design allows for easy installation and placement in various locations.

## Installation Process

Installing the Pentair SM 20 2 requires careful attention to detail to ensure proper functionality. Here's a step-by-step guide:

### Tools and Materials Needed

- Adjustable wrench
- Pipe cutter
- Teflon tape
- Screwdriver
- Water supply line
- Drain line
- Electrical connection (if applicable)

### Step-by-Step Installation

1. **Choose the Location:** Select a dry, well-ventilated area near the main water supply line. Ensure there is enough space for maintenance and servicing.
2. **Prepare the Area:** Clear the installation site of any obstructions and ensure the floor is level.
3. **Shut Off Water Supply:** Turn off the water supply to prevent any leaks during installation.
4. **Cut the Pipes:** Use the pipe cutter to cut the main water supply line where the unit will be installed. Ensure the cuts are clean to avoid leaks.
5. **Install Bypass Valve:** Attach the bypass valve to the SM 20 2, ensuring it is secure and properly aligned.
6. **Connect Inlet and Outlet:** Connect the inlet and outlet pipes to the corresponding ports on the unit. Use Teflon tape to ensure watertight seals.

7. **Connect Drain Line:** Attach the drain line to the appropriate outlet on the unit, directing it to a suitable drainage point.
8. **Power Connection:** If your model requires electrical power, connect it to a properly grounded outlet.
9. **Turn on Water Supply:** Gradually turn on the water supply and check for any leaks. Make adjustments as necessary.
10. **Test the System:** Follow the startup instructions in the manual to initiate the system and confirm it is operating correctly.

## Operational Guidelines

To ensure the Pentair SM 20 2 operates at peak efficiency, users must understand the operational guidelines.

### Initial Setup

1. **Setting the Time:** After installation, set the current time on the control panel. This is crucial for the regeneration cycle.
2. **Program Water Hardness:** Enter the hardness level of your incoming water. This information is vital for the system to calculate the regeneration cycle accurately.

### Daily Operations

- **Monitor Water Usage:** Keep track of your water consumption to anticipate when regeneration will be necessary.
- **Check Salt Levels:** Regularly inspect the salt reservoir and refill it as needed to prevent the system from running out of salt.

### Regeneration Process

The regeneration process can be set to occur at specific intervals or triggered based on water usage. The Pentair SM 20 2 typically features:

- **Time-Delayed Regeneration:** Allows the user to set specific times for regeneration, usually during off-

peak hours.

- Demand Regeneration: Automatically initiates regeneration based on water usage patterns.

## **Maintenance Tips**

Regular maintenance is essential to ensure the longevity and efficiency of the Pentair SM 20 2. Here are some tips:

### **Monthly Maintenance**

- Check Salt Levels: Ensure that the salt level is maintained above the minimum requirement.
- Inspect for Leaks: Periodically check connections and hoses for any signs of leaks.

### **Quarterly Maintenance**

- Clean the Brine Tank: Remove any salt bridges or residue that may have built up in the brine tank.
- Test Water Hardness: Use a water hardness test kit to monitor the effectiveness of the softener.

### **Annual Maintenance**

- Replace Filter Media: Depending on usage, consider replacing the resin media to maintain optimal performance.
- Professional Inspection: Schedule an annual inspection by a certified technician to ensure all components are functioning correctly.

## **Troubleshooting Common Issues**

Despite its reliability, users may encounter issues with the Pentair SM 20 2. Here are common problems and their solutions:

### **System Not Regenerating**

- Check Power Supply: Ensure the unit is plugged in and the outlet is functioning.

- Inspect Timer Settings: Verify that the timer settings are correctly programmed.

## **Water Still Hard**

- Check Salt Levels: Low salt levels can hinder the regeneration process.
- Test Resin Media: Old or damaged resin may need to be replaced.

## **Leakage Around the Unit**

- Inspect Connections: Tighten any loose connections and ensure all fittings are secure.
- Examine Drain Line: Ensure the drain line is not clogged or improperly installed.

## **Conclusion**

The Pentair SM 20 2 is an excellent investment for anyone seeking to improve their water quality. By understanding the manual's contents, including installation, operation, maintenance, and troubleshooting, users can ensure that their system functions efficiently and effectively. Regular attention to the unit will not only prolong its lifespan but also enhance the overall quality of the water supplied to your home or business. Always refer to the specific Pentair SM 20 2 manual for the most accurate and detailed information tailored to your model.

## **Frequently Asked Questions**

### **What is the purpose of the Pentair SM 20 2 manual?**

The Pentair SM 20 2 manual provides detailed instructions on the installation, operation, and maintenance of the SM 20 2 pool and spa control system, ensuring safe and efficient usage.

### **Where can I find a digital copy of the Pentair SM 20 2 manual?**

A digital copy of the Pentair SM 20 2 manual can typically be found on the official Pentair website under the support or resources section, or through authorized dealers and distributors.

### **What are the key features highlighted in the Pentair SM 20 2 manual?**

Key features highlighted in the Pentair SM 20 2 manual include programmable settings, user-friendly interface, energy efficiency, and compatibility with various pool and spa systems.

## How do I troubleshoot issues with the Pentair SM 20 2 as per the manual?

The manual includes a troubleshooting section that outlines common issues, diagnostic procedures, and solutions, such as checking power connections, resetting the system, and verifying sensor functionality.

## Does the Pentair SM 20 2 manual include safety precautions?

Yes, the Pentair SM 20 2 manual includes essential safety precautions to follow during installation and operation, such as electrical safety guidelines and recommendations for personal protective equipment.

Find other PDF article:

<https://soc.up.edu.ph/33-gist/files?docid=HQL64-6402&title=introducing-the-christian-faith.pdf>

## Pentair Sm 20 2 Manual

*Pentair | Move, Improve and Enjoy Water*

From our residential and commercial water solutions, to industrial water management and everything in between, Pentair is focused on smart, sustainable water solutions that help our ...

*Pentair Products*

Pentair offers a wide variety of products from pool and spa equipment, water filters, water pumps and spray nozzles. See how we can help you in your home or business, for life.

Pentair Pool & Spa Products | Smart and Sustainable Pool Solutions

At Pentair, we focus on innovating smart and sustainable pool solutions so you can spend less time worrying and more time enjoying your pool. Customer success is at the heart of our vision ...

Residential Solutions - Pentair

From filter to flow, tap to pool, shower to sump pump, we help you move, improve and enjoy your water, with peace of mind at your fingertips. All from the easy-to-use Pentair Pool app ...

Pentair - Pool Supplies Canada

Decades of commitment to reliable, technologically advanced, and energy-efficient pool products has built Pentair's reputation as the pool industry's global leader. Join the millions of pool and ...

*Pentair Products - Canadian Water Warehouse Ltd.*

Concentrated Pentair dry chlorination pellets offer a convenient, economical and safe alternative to harsh, hard-to-handle liquids. Each product is formulated to get the best possible...

**Pentair - Wikipedia**

Pentair was founded in August 1966 as Pentair Industries, Inc., with the name derived from the Greek root word "penta-" (alluding to the company's five founders) and "air" (alluding to the ...

**Careers at Pentair | Pentair jobs**

At Pentair, we are driven to create a better world through smart, sustainable water solutions. We

don't 'go with the flow.' It's our duty to stay ahead of the current because the future of water ...

## **Pentair - Products | Pentair Food & Beverage**

Pentair Haffmans supplies quality control equipment, micro-filtration and carbon dioxide (CO<sub>2</sub>) systems for the brewing, soft drink, wine, bioethanol, and biogas industries.

## **About Pentair**

In 1966, five men intent on manufacturing high-altitude balloons founded a company in suburban St. Paul, Minnesota, that they called Pentair, the Greek “penta” for the five founders and “air” ...

### *Pentair | Move, Improve and Enjoy Water*

From our residential and commercial water solutions, to industrial water management and everything in between, Pentair is focused on smart, sustainable water solutions that help our planet and people thrive.

### *Pentair Products*

Pentair offers a wide variety of products from pool and spa equipment, water filters, water pumps and spray nozzles. See how we can help you in your home or business, for life.

## **Pentair Pool & Spa Products | Smart and Sustainable Pool Solutions**

At Pentair, we focus on innovating smart and sustainable pool solutions so you can spend less time worrying and more time enjoying your pool. Customer success is at the heart of our vision for a splash-tastic future, so we've crafted products like energy-efficient pool pumps, automation and lighting that puts full pool control and enjoyment in ...

## **Residential Solutions - Pentair**

From filter to flow, tap to pool, shower to sump pump, we help you move, improve and enjoy your water, with peace of mind at your fingertips. All from the easy-to-use Pentair Pool app dashboard on your smart device.

### *Pentair - Pool Supplies Canada*

Decades of commitment to reliable, technologically advanced, and energy-efficient pool products has built Pentair's reputation as the pool industry's global leader. Join the millions of pool and spa owners around the world who count on Pentair to bring their poolscape dreams to life.

### Pentair Products - Canadian Water Warehouse Ltd.

Concentrated Pentair dry chlorination pellets offer a convenient, economical and safe alternative to harsh, hard-to-handle liquids. Each product is formulated to get the best possible...

### Pentair - Wikipedia

Pentair was founded in August 1966 as Pentair Industries, Inc., with the name derived from the Greek root word "penta-" (alluding to the company's five founders) and "air" (alluding to the company's original product), and went public several months later. [10] The 5 founders were all formerly employed by Litton Industries. [11] Originally, they intended to manufacture high ...

### *Careers at Pentair | Pentair jobs*

At Pentair, we are driven to create a better world through smart, sustainable water solutions. We don't 'go with the flow.' It's our duty to stay ahead of the current because the future of water depends on us. Our residential, commercial and industrial solutions help sustainably move, improve and enjoy water, life's most essential resource.

### Pentair - Products | Pentair Food & Beverage

Pentair Haffmans supplies quality control equipment, micro-filtration and carbon dioxide (CO<sub>2</sub>) systems for the brewing, soft drink, wine, bioethanol, and biogas industries.

### About Pentair

In 1966, five men intent on manufacturing high-altitude balloons founded a company in suburban St. Paul, Minnesota, that they called Pentair, the Greek “penta” for the five founders and “air” for the products they planned to produce.

Find the Pentair SM 20 2 manual here! Get detailed instructions

[Back to Home](#)