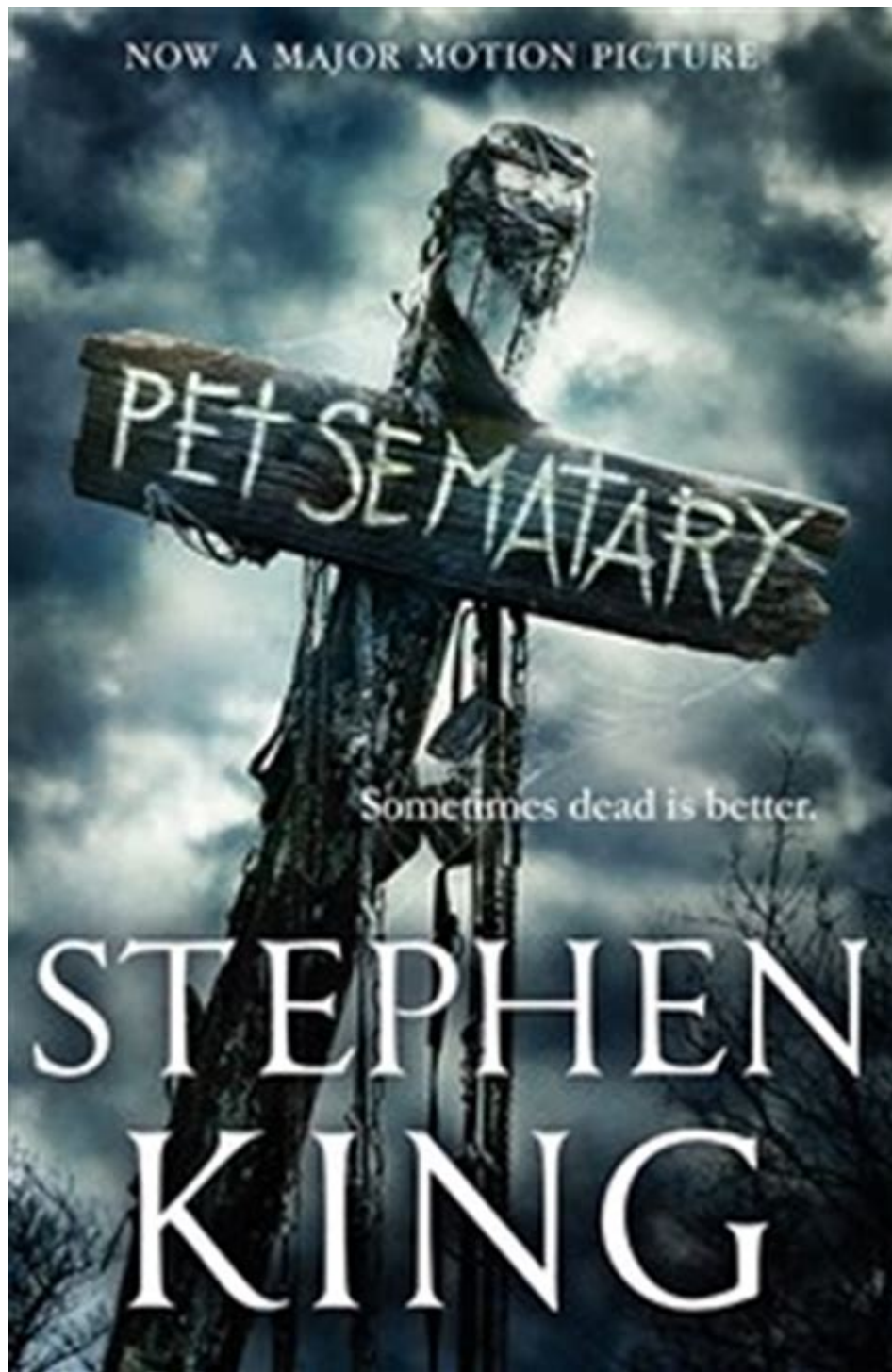


Pet Sematary Stephen King



Pet Sematary Stephen King is a deeply haunting exploration of grief, loss, and the lengths to which a person will go to reclaim what has been lost. First published in 1983, this novel has become one of Stephen King's most memorable works, delving into the darker aspects of human emotion and the consequences of defying natural order. With its chilling narrative and thought-provoking themes, Pet Sematary continues to resonate with readers around the world.

Overview of Pet Sematary

Pet Sematary presents an unsettling story that begins with the Creed family moving to a rural town in Maine. Louis Creed, a doctor, is drawn to the peaceful surroundings of their new home, which is located near a pet cemetery maintained by local children. This seemingly innocuous setting quickly reveals its darker side when Louis learns of a burial ground with the power to resurrect the dead. However, the consequences of such actions lead to profound tragedy and horror.

Plot Summary

1. Introduction to the Creed Family

- Louis Creed and his wife, Rachel, along with their children, Ellie and Gage, relocate from Chicago to Ludlow, Maine.
- The family is introduced to their friendly neighbor, Jud Crandall, who becomes a pivotal character in Louis's life.

2. Discovery of the Pet Sematary

- The children in the neighborhood have created a pet cemetery to honor their deceased pets.
- Jud takes Louis and Ellie to the cemetery, which serves as a focal point for the narrative.

3. The Burial Ground Beyond the Pet Sematary

- Jud reveals a hidden burial ground beyond the pet cemetery, which has the power to bring the dead back to life but at a grave cost.
- Louis learns of the tragic history associated with the burial ground, including the story of Timmy Bateman, who was brought back to life only to become violent and malevolent.

4. Tragedy Strikes

- The family faces an unimaginable loss when Gage, the youngest son, is killed in a tragic accident.
- Driven by grief and desperation, Louis decides to bury Gage in the ancient burial ground, despite Jud's warnings.

5. The Horrific Consequences

- Gage returns, but he is not the same innocent child he once was. His resurrection brings chaos and violence.
- The story culminates in tragedy as Louis grapples with the consequences of his actions, leading to a heartbreaking conclusion.

Thematic Elements

Pet Sematary is rich with themes that explore the human condition. Some of the most prominent themes include:

Grief and Loss

- The novel presents grief as a powerful and consuming force. Louis's inability to cope with Gage's death propels him into making dangerous choices.
- Rachel's traumatic past, including her experiences with her sister Zelda, highlights the scars left by loss and how they can affect relationships.

The Natural Order of Life and Death

- One of the central themes of *Pet Sematary* is the concept of accepting death as a natural part of life. The resurrection of the dead disrupts this order, leading to disastrous consequences.
- The burial ground serves as a metaphor for humanity's desire to control life and death, emphasizing that some boundaries should not be crossed.

The Consequences of Hubris

- Louis's decision to resurrect Gage is rooted in hubris, as he believes he can outsmart death. This arrogance leads to catastrophic events that affect not only him but also his family.
- The narrative serves as a cautionary tale about the dangers of playing God and the unforeseen repercussions of one's actions.

Character Analysis

The characters in *Pet Sematary* are intricately developed, each representing different aspects of the human experience regarding love, loss, and the struggle with mortality.

Louis Creed

- Louis is a complex character whose journey embodies the themes of grief and denial. His descent into obsession with resurrection is both tragic and relatable.
- His character arc showcases the transformation from a loving father to a man consumed by despair and desperation.

Rachel Creed

- Rachel represents a contrasting perspective on death, stemming from her traumatic childhood experiences.
- Her fear of death and the supernatural influences her relationship with Louis and their children, ultimately leading to conflict and tragedy.

Jud Crandall

- Jud serves as a mentor figure to Louis but also embodies the wisdom of experience. His warnings about the burial ground highlight the dangers that Louis chooses to ignore.
- His character adds depth to the narrative, illustrating the theme of the burden of knowledge.

Impact and Legacy

Since its publication, *Pet Sematary* has left an indelible mark on the horror genre and popular culture.

Adaptations

- The novel has been adapted into two notable films: the original 1989 movie directed by Mary Lambert and a 2019 remake directed by Kevin Kölsch and Dennis Widmyer.
- Both adaptations brought new audiences to King's work, although they received varying degrees of critical acclaim.

Cultural Significance

- *Pet Sematary* has been referenced in various forms of media, including television shows, music, and literature, solidifying its place in pop culture.
- The novel's themes resonate with readers, often sparking discussions about grief, the morality of resurrection, and the human experience.

Conclusion

In conclusion, *Pet Sematary* by Stephen King stands as a testament to the author's ability to weave complex themes into a gripping narrative. Through the lens of the Creed family, King explores the depths of grief, the consequences of defying nature, and the darkness that can reside within us all. The novel's haunting atmosphere and thought-provoking themes continue to captivate readers, making it a cornerstone of modern horror literature. Its legacy endures, reminding us of the fragility of life and the profound impact of our choices.

Frequently Asked Questions

What is the main premise of 'Pet Sematary' by Stephen King?

The main premise of *'Pet Sematary'* revolves around a family that discovers a burial ground near their new home, which has the power to resurrect the dead. However, the consequences of bringing

the deceased back to life are horrifying and lead to tragic events.

How does 'Pet Sematary' explore the theme of grief?

'Pet Sematary' delves deep into the theme of grief by showcasing how different characters cope with loss. The protagonist, Louis Creed, faces the death of his son and is driven by despair to make choices that ultimately lead to catastrophic outcomes, highlighting the dangers of refusing to accept death.

What are the differences between the original 'Pet Sematary' novel and the 2019 film adaptation?

The 2019 film adaptation of 'Pet Sematary' differs from the original novel in several ways, including changes to character arcs, the ending, and the portrayal of certain events. The film adds new elements to heighten suspense but also alters key themes and character motivations from the book.

Why is the character of Jud Crandall significant in 'Pet Sematary'?

Jud Crandall is significant in 'Pet Sematary' as he serves as a mentor figure to Louis Creed, introducing him to the dark secrets of the burial ground. His role embodies the theme of knowledge versus ignorance, as he understands the dangers of the burial ground yet ultimately fails to prevent Louis from making tragic choices.

What is the significance of the title 'Pet Sematary'?

The title 'Pet Sematary' refers to the makeshift cemetery where local children bury their deceased pets. It symbolizes innocence and the natural cycle of life and death, which is disrupted by the supernatural elements of the story, ultimately leading to a chilling examination of life, death, and the desire to reverse fate.

How has 'Pet Sematary' influenced popular culture and horror literature?

'Pet Sematary' has significantly influenced popular culture and horror literature by introducing themes of resurrection and the moral implications of tampering with death. Its chilling narrative and memorable imagery have inspired numerous adaptations, including films, a stage play, and references in various other works of fiction, solidifying its status as a classic in the horror genre.

Find other PDF article:

<https://soc.up.edu.ph/18-piece/files?trackid=HZF68-6129&title=duathlon-training-plan.pdf>

Pet Sematary Stephen King

18F-FDG ...

KET\PET\FCE3

Nov 5, 2024 · KET\PET\FCE3 5 1 9 PET\FCE

Explore the chilling world of 'Pet Sematary' by Stephen King. Uncover themes

[Back to Home](#)