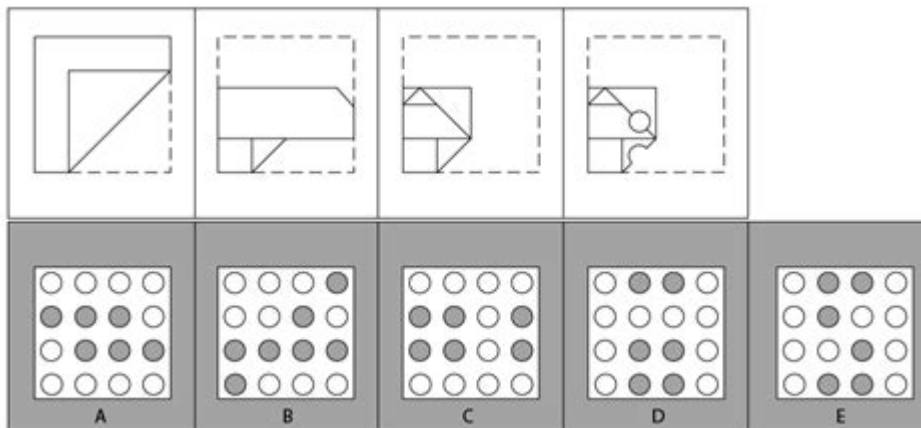


# Perceptual Ability Test Dat Practice



**Perceptual ability test data practice** is an essential component for individuals preparing for various standardized tests and assessments. These tests evaluate a candidate's ability to understand and manipulate visual information, which is crucial in fields such as engineering, architecture, and design. This article will delve into the nuances of perceptual ability tests, the importance of practice, and effective strategies to enhance performance.

## Understanding Perceptual Ability Tests

Perceptual ability tests are designed to measure how well individuals can perceive and interpret spatial relationships, visual patterns, and other related tasks. These tests often include various question types, such as:

- Spatial reasoning
- Pattern recognition
- Visual discrimination
- 3D visualization

Typically, these assessments consist of multiple-choice questions, where candidates must select the correct answer from a set of options. They might involve tasks like identifying rotated objects, completing patterns, or visualizing how objects fit together.

# Importance of Perceptual Ability Tests

Perceptual ability is critical in many professions, particularly those that require a strong spatial and visual understanding. Here are some reasons why these tests are significant:

1. **Career Relevance:** Many fields, such as engineering, architecture, graphic design, and even medicine, require high perceptual skills. Employers often use these tests to assess candidates' suitability for specific roles.
2. **Predictive Validity:** Studies have shown that perceptual ability tests can predict job performance. Candidates with strong perceptual skills tend to excel in tasks that require spatial reasoning.
3. **Standardized Assessment:** These tests provide a standardized method to evaluate candidates across various demographics, ensuring a level playing field during the selection process.

## Data Practice: The Key to Success

To excel in perceptual ability tests, practice is crucial. Familiarity with the test format, types of questions, and time constraints can significantly enhance performance. Here's how to approach data practice effectively:

### 1. Familiarize Yourself with the Test Format

Understanding the structure of perceptual ability tests is the first step in effective preparation. Here's how you can familiarize yourself:

- **Review Sample Questions:** Many resources provide sample questions similar to those on actual tests. Reviewing these can give you a sense of what to expect.
- **Take Practice Tests:** Engage in full-length practice tests under timed conditions. This will help you manage time effectively during the actual test.

### 2. Utilize Online Resources and Apps

Several online platforms and mobile applications offer practice questions and mock tests for perceptual ability assessments. Some popular options include:

- **Test Prep Websites:** Websites like Khan Academy and others provide free practice questions and resources.

- Mobile Apps: Apps designed specifically for perceptual ability tests can provide flexibility and convenience for practicing on the go.

### **3. Focus on Weak Areas**

As you practice, take note of the areas where you struggle the most. Focus on improving these areas through targeted practice. Here's how:

- Identify Patterns: Analyze your performance on practice tests to identify question types that consistently challenge you.
- Targeted Exercises: Use focused exercises that specifically address your weak points. For example, if you struggle with spatial reasoning, seek out puzzles and activities that enhance this skill.

### **4. Practice Visualization Techniques**

Visualization is a key skill in perceptual ability tests. Here are some techniques to enhance this skill:

- Mental Rotation Exercises: Practice rotating objects in your mind. You can use physical objects or software that simulates 3D rotations.
- Drawing and Sketching: Sketching objects from different angles can improve your ability to visualize spatial relationships.

### **5. Time Management Practice**

Perceptual ability tests are often time-sensitive. Developing effective time management strategies can significantly impact your performance:

- Timed Drills: Set a timer while taking practice questions. This will help you get accustomed to the pressure of working within a limited timeframe.
- Pacing Strategies: Develop a pacing strategy that allows you to allocate appropriate time to each question without rushing.

## **Effective Study Techniques**

In addition to practice, employing effective study techniques can enhance your perceptual ability. Consider the following methods:

# 1. Group Study Sessions

Joining a study group can provide diverse perspectives on problem-solving. Collaborating with peers allows you to:

- Share Strategies: Discuss and share different approaches to solving perceptual ability questions.
- Challenge Each Other: Engaging in friendly competitions can motivate you to improve and keep learning.

# 2. Use Flashcards

Flashcards can be an effective way to reinforce visual memory and familiarize yourself with common patterns in perceptual tests. Here's how to use them:

- Create Custom Flashcards: Design flashcards for different types of visual patterns or spatial reasoning problems.
- Regular Review: Schedule regular review sessions to reinforce your understanding and recall of the material.

# 3. Incorporate Real-Life Applications

Applying perceptual skills to real-life scenarios can enhance your understanding and retention. Here are some ideas:

- Art and Design: Engage in activities like drawing, painting, or graphic design, which require visual-spatial skills.
- Puzzles and Games: Play games that require spatial reasoning, such as Tetris, Sudoku, or jigsaw puzzles. These can make practice enjoyable while sharpening your skills.

# Conclusion

Preparing for perceptual ability tests requires dedication, practice, and a strategic approach. By understanding the test format, utilizing available resources, focusing on weak areas, and applying effective study techniques, candidates can significantly enhance their performance. Remember, consistency in practice is key. As you engage in perceptual ability test data practice, you build the skills necessary to succeed not only in tests but also in your future career endeavors. Whether you're pursuing an engineering degree, entering the design field, or preparing for a medical profession, honing your

perceptual skills will serve you well in your journey ahead.

## **Frequently Asked Questions**

### **What is a perceptual ability test and why is it important for DAT preparation?**

A perceptual ability test assesses a student's spatial reasoning and visual skills, which are crucial for success in dental school. It helps evaluate how well a student can interpret and manipulate two-dimensional and three-dimensional objects, making it essential for DAT preparation.

### **What types of questions can I expect on the perceptual ability section of the DAT?**

The perceptual ability section typically includes questions related to angle discrimination, paper folding, cube counting, and three-dimensional object visualization. These questions test your ability to understand spatial relationships and visual processing.

### **How can I effectively practice for the perceptual ability test on the DAT?**

To effectively practice, use DAT prep books and online resources that include practice tests and visual aids. Additionally, consider utilizing 3D modeling software or apps that enhance spatial reasoning skills, and regularly time yourself to simulate test conditions.

### **Are there any specific strategies to improve my spatial reasoning skills for the DAT?**

Yes, some effective strategies include practicing with puzzles, engaging in activities like drawing or modeling, and studying geometric shapes. Regularly solving perceptual ability practice questions can also help familiarize you with the test format and improve your speed.

### **How much time should I dedicate to practicing perceptual ability for the DAT?**

It is recommended to dedicate at least 1-2 hours per week to perceptual ability practice, gradually increasing this time as the exam approaches. Consistent practice over several months can significantly improve your skills and confidence.

Find other PDF article:

<https://soc.up.edu.ph/10-plan/pdf?ID=xxb12-0558&title=bmw-3-series-owners-manual.pdf>

# [Perceptual Ability Test Dat Practice](#)

*BingHomepageQuiz - Reddit*

Microsoft Bing Homepage daily quiz questions and their answers

Start home page daily quiz : r/MicrosoftRewards - Reddit

Apr 5, 2024 · Confusingly, I appeared to receive 10 points just from clicking the tile and then no points after completing the quiz (so maybe you need to get the correct answers which I did not.)

Bing homepage quiz : r/MicrosoftRewards - Reddit

Dec 4, 2021 · While these are the right answers and this quiz is still currently bugged, you don't lose points for wrong answers on this quiz.

**EveryDayBingQuiz - Reddit**

Welcome all of you, here you will get daily answers of Microsoft Rewards (Bing Quiz) like Bing Homepage Quiz, Bing Supersonic Quiz, Bing News Quiz, Bing Entertainment Quiz, ...

**Bing Homepage Quiz (9-3-2023) : r/AnswerDailyQuiz - Reddit**

Sep 3, 2023 · Microsoft Rewards Bing Homepage Quiz Questions and Answers (9-3-2023) Which is New York City's tallest building? A 30 Hudson Yards B Empire State...

**Is there some secret "trick" to solving these? - Reddit**

Is there some secret "trick" to solving these? Bing Sort by: Add a Comment propheticjustice

Bing Homepage Quiz not working : r/MicrosoftRewards - Reddit

Microsoft sucks soooo much arse. I have been complaining for weeks about not getting points from the Bing Homepage Quizzes. It doesn't matter if I clear the cache, clear the browser, ...

*[US] Test your smarts [01-07-22] : r/MicrosoftRewards - Reddit*

Jan 7, 2022 · AmySueF [US] Test your smarts [01-07-22] Quiz and Answers News this week quiz answers Pittsburgh 119 Little Caesars Hot and Ready Pizza Is also a solar panel 21 Dogs ...

**Microsoft Rewards Bing Homepage Quiz Answers Today : r**

Jun 15, 2024 · Bing Homepage Quiz Answers What animal father-child duo is in today's image? A Red foxes B Coyotes C Gray wolves The correct answer is...

**[US] In 2016, the American bison was declared what? - MS Bing ...**

[1-8-2022] Microsoft Rewards Bing Homepage Quiz Questions and Answers: Question: Today we're befriendng a frosty bison foursome in Yellowstone National Park. Bison are...

**Rufus 3.7 Download - FileHorse**

Sep 9, 2019 · Download Rufus 3.7 for Windows PC from FileHorse. 100% Safe and Secure Free Download (32-bit/64-bit) Software Version.

**Rufus, OR Hourly Weather Forecast | Weather Underground**

1 day ago · Rufus Weather Forecasts. Weather Underground provides local & long-range weather forecasts, weatherreports, maps & tropical weather conditions for the Rufus area.

An Amazing Burning Tool For Windows 11: Rufus Latest Version

Jul 7, 2022 · The new Rufus version is a wonderful burning tool for Windows 11 because it introduces the "Extended" Windows 11 support.

*Rufus 4.1 restores some missing features, adds improved ... - Neowin*

Jun 1, 2023 · Rufus, a popular third-party tool for creating bootable USB drives, has been updated to version 4.1. The latest release brings back some previously missing features and improves ...

Rufus 3.21 Beta is out with improved Windows support and

Nov 17, 2022 · Rufus, a popular third-party tool for creating bootable USB drives for installing Windows or other operating systems, has received an update to version 3.21 with several ...

*Download Rufus 3.1 for Windows - Filehippo.com*

Apr 10, 2025 · Download Rufus 3.1 for Windows. Fast downloads of the latest free software! Click now

Rufus 3.17 - Neowin

Oct 23, 2021 · Rufus is a small utility that helps format and create bootable USB flash drives, such as USB keys/pendrives, memory sticks, etc. Despite its small size, Rufus provides everything you ...

Pendrive Linux: Easily Boot from USB Windows or Linux Live

Apr 3, 2025 · Boot from USB Windows or Linux. Create a Live Linux bootable USB from ISO. Multiboot, learn Linux commands. Portable VirtualBox, Proxmox VM.

### **Best Rufus Alternative For Windows Compatible with Windows ...**

Dec 6, 2024 · Best Rufus Alternative For Windows Compatible with Windows 11/10 What is the best Rufus for Windows? A list of best working Rufus alternatives with similar features and excellent ...

### **Rufus Roy Warren (1944-1999) - Find a Grave Memorial**

Mar 29, 1999 · As manager of this memorial you can add or update the memorial using the Edit button below. Learn more about managing a memorial .

### **Rufus 4.2 is out with ZIP64, VHDX, FFU support, and more**

Jul 26, 2023 · Earlier this month, Pete Batard, creator of the Rufus app, released version 4.2 beta with ZIP64 support and other improvements. After a short testing period, the update is available ...

*Rufus Kay Moberly - Global Industrial Company | LinkedIn*

Passionate, Driven, Responsible, & Effective. Experienced in; Product Compliance, Quality... · Experience: Global Industrial Company · Education: State University of New York College at ...

Download Rufus 3.14 from FileHorse.com

Key details about this download The file will be downloaded from secure FileHorse servers This file is safe and scanned with 65 antivirus apps (Virus-Total report) All files are in original form. ...

### **Create a Windows 10 USB via Rufus (UEFI or Legacy)**

Oct 11, 2023 · To create a Windows 10 USB using Rufus (UEFI or Legacy), you can follow these steps: Note: Before proceeding, make sure you have a Windows 10 ISO file and

Boost your skills with our comprehensive guide on perceptual ability test DAT practice. Discover effective strategies and resources to excel. Learn more today!

[Back to Home](#)