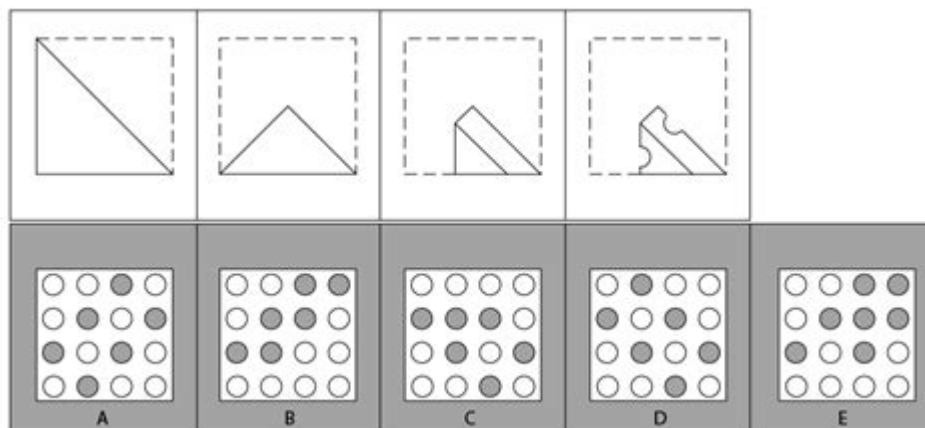


# Perceptual Ability Dat Practice



## Introduction to Perceptual Ability Dat Practice

**Perceptual ability dat practice** is a crucial part of preparing for the Dental Admission Test (DAT), particularly for students aspiring to enter dental school. This section of the DAT assesses how well an individual can visualize and manipulate objects in three-dimensional space. Given the importance of perceptual skills in dentistry—where spatial awareness and the ability to visualize anatomical structures are paramount—effective practice strategies can significantly enhance performance on this part of the exam.

In this article, we'll explore the nature of the perceptual ability section, discuss effective study methods, and provide resources for practice, along with tips for success.

## Understanding the Perceptual Ability Section

The perceptual ability section of the DAT consists of various types of questions designed to evaluate a candidate's spatial reasoning skills. This section typically includes the following components:

### 1. Keyhole Images

This type of question requires examinees to visualize how an object will appear when viewed from a specific angle. Candidates must identify the correct option that matches the keyhole view presented.

### 2. Top-Front-End (TFE) Views

In TFE questions, candidates are given a three-dimensional object and must determine how it will

look from different perspectives. This tests spatial visualization skills and the ability to rotate objects mentally.

### 3. Angle Discrimination

Angle discrimination questions challenge candidates to identify whether two angles are the same or different. This requires a keen eye for detail and strong analytical skills.

### 4. Cube Counting

In these questions, candidates must determine how many cubes are present in a larger structure. This tests the ability to visualize and count three-dimensional objects.

### 5. Pattern Folding

Pattern folding questions require candidates to visualize how two-dimensional patterns will look when folded into three-dimensional shapes. This tests the ability to anticipate spatial changes.

## Effective Study Methods for Perceptual Ability DAT Practice

To excel in the perceptual ability section, candidates should employ a variety of study methods. Here are some strategies that can enhance preparation:

### 1. Use Online Resources and Practice Tests

Several websites and platforms offer practice tests specifically tailored to the perceptual ability section of the DAT. Some popular resources include:

- **DAT Bootcamp:** This platform offers comprehensive practice questions and video explanations.
- **Kaplan DAT Prep:** Kaplan provides a variety of resources including diagnostic tests and full-length practice exams.
- **Crack the DAT:** Known for its focus on perceptual ability, this resource provides targeted practice questions.

## 2. Visualize and Sketch

Improving spatial reasoning skills can often be achieved through visualization exercises. Candidates can benefit from:

- Practicing drawing shapes and objects to better understand their dimensions.
- Using 3D modeling software to manipulate objects and observe their transformations.
- Engaging in puzzles or games that require spatial reasoning, such as Tetris or 3D jigsaw puzzles.

## 3. Study Groups

Joining or forming a study group can provide motivation and enhance learning. Candidates can share insights and techniques for solving perceptual ability questions. Group discussions can also help reinforce concepts and improve problem-solving skills.

## 4. Create a Study Schedule

A structured study schedule is essential for effective preparation. Candidates should:

1. Dedicate specific time blocks each week for perceptual ability practice.
2. Balance practice between different question types to ensure a well-rounded skill set.
3. Incorporate regular review sessions to reinforce learned concepts.

## Resources for Perceptual Ability DAT Practice

In addition to online resources, several books and study guides can aid candidates in their preparation for the perceptual ability section. Some recommended titles include:

- **The Official Guide to the DAT:** This book includes practice questions and explanations directly from the DAT creators.
- **DAT Destroyer:** Known for its rigorous practice questions, this book is ideal for intensive preparation.

- **DAT Score Booster:** This resource provides targeted practice questions and detailed explanations.

## Online Forums and Communities

Engaging with peers in online forums can provide additional support and resources. Websites like Student Doctor Network and DAT Reddit communities are excellent places to ask questions, share resources, and discuss strategies with fellow DAT candidates.

## Tips for Success in the Perceptual Ability Section

To maximize performance in the perceptual ability section of the DAT, candidates can implement the following tips:

### 1. Familiarize Yourself with the Test Format

Understanding the structure and timing of the test can alleviate anxiety. Candidates should practice under timed conditions to develop pacing strategies.

### 2. Focus on Weaknesses

Identify which types of questions present the most challenges and allocate additional practice time to those areas. Regularly assess progress and adjust study methods accordingly.

### 3. Utilize Flashcards

Creating flashcards for different types of perceptual questions can aid memorization and quick recall of techniques. Flashcards can be particularly useful for angle discrimination and cube counting.

### 4. Stay Healthy and Manage Stress

Maintaining a healthy lifestyle during preparation is key. Candidates should prioritize sleep, nutrition, and regular exercise to optimize cognitive function and reduce stress levels.

## 5. Practice Visualization Techniques

Incorporate exercises that enhance visualization skills. Techniques such as guided imagery or mental rotation exercises can improve spatial reasoning abilities.

## Conclusion

**Perceptual ability dat practice** is an indispensable part of preparing for the DAT. By utilizing various study methods, practicing with targeted resources, and employing effective strategies, candidates can significantly improve their spatial reasoning skills. Mastering the perceptual ability section not only enhances chances of success on the DAT but also lays a strong foundation for future studies and a career in dentistry. With dedication and the right approach, achieving a high score in this section is within reach.

## Frequently Asked Questions

### What is perceptual ability and why is it important in DAT practice?

Perceptual ability refers to the capacity to visualize and manipulate objects in space. It is crucial in DAT practice as it helps candidates excel in sections that test spatial reasoning, such as the PAT (Perceptual Ability Test), which is essential for fields like dentistry.

### What are some effective study resources for improving perceptual ability for the DAT?

Some effective study resources include DAT prep books like 'Crack the DAT', online platforms like DAT Bootcamp, and practice software that offers PAT-specific questions. Additionally, using 3D modeling apps or spatial reasoning games can also be beneficial.

### How can I practice for the PAT section of the DAT effectively?

To practice effectively for the PAT section, incorporate timed practice tests, focus on each type of question (like angle ranking, hole punching, and cube counting), and review your answers to understand mistakes. Regular practice with visual aids can also enhance spatial skills.

### What types of questions are included in the PAT section of the DAT?

The PAT section includes questions on angle discrimination, paper folding, cube counting, and form development. These questions assess your ability to visualize and manipulate three-dimensional objects.

## Are there any specific strategies to improve spatial reasoning skills for the DAT?

Yes, strategies include practicing with visual puzzles, using 3D software to manipulate shapes, drawing diagrams, and engaging in activities like sculpture or model building. Regularly exposing yourself to different spatial tasks can also help.

## How much time should I dedicate to perceptual ability practice for the DAT?

It is recommended to dedicate at least 1-2 hours per week specifically to perceptual ability practice, gradually increasing this time as the exam approaches. Consistent, focused practice will enhance your skills over time.

Find other PDF article:

<https://soc.up.edu.ph/12-quote/pdf?docid=riZ40-8058&title=centurian-forced-womanhood-magazine.pdf>

## Perceptual Ability Dat Practice

### Decoding facebook's blob video url - Stack Overflow

Facebook downloads the audio and the video separately, so get the audio link from the google chrome inspector, by right click on the video and choosing inspect ,going to Inspector, Network ...

### **Facebook share link - can you customize the message body text?**

Feb 17, 2011 · Facebook will not allow developers pre-fill messages. Developers may customize the story by providing OG meta tags, but it's up to the user to fill the message. This is only possible if ...

### *How to resolve Facebook Login is currently unavailable for this app ...*

Jul 28, 2021 · In the facebook developers console for your app, go to App Review-> Permissions and Features. Set the public\_profile and email to have advanced access. This will allow all ...

### **How to add facebook share button on my website? - Stack Overflow**

May 9, 2013 · Note that with using the Facebook SDK your users are being tracked only by visiting your site; they don't even need to click any of your Share or Like buttons. The answers below ...

### *Where can I find my Facebook application id and secret key?*

Jul 8, 2010 · In my Facebook account, where can I find these application IDs, secret key, all?

### **Facebook share link without JavaScript - Stack Overflow**

Learn how to create a Facebook share link without using JavaScript, including tips and solutions for effective sharing.

### How to recognize Facebook User-Agent - Stack Overflow

Dec 24, 2011 · You can checkout Facebook's best practices page for more and up-to-date details on

how to detect its crawlers and scrapers. Note that Facebook has been added to the list of user ...

### How to extract the direct facebook video url - Stack Overflow

This is in fact the correct answer, was able to extract link with Chrome developer tools through m.facebook...

### Solved: Unauthorized payment to Meta Platforms (Facebook i.

SSo today suddenly I had two unauthorized automatic payments to Meta Platforms INC (email says Facebook ireland???) amounting to \$354.72! I checked my Facebook account and there were NO ...

### **What are all the custom URL schemes supported by the Facebook ...**

Note These URL's are likely not available. Facebook has been updated a number of times and did not officially support any of these. /Note I am trying to see what information is available about...

### **Google**

Google 100

AI

AI 203

AI SaaS API ...

PDF

DOC PPT

-

50

### **DeepL**

4 days ago · & DeepL

Microsoft Translator -

3 days ago · 100 -

-

177 AI

1 day ago · AI 109 PDF/Word

### DeepL - DeepL

DeepL

Boost your score with our comprehensive guide on perceptual ability DAT practice. Discover effective strategies and tips. Learn more to excel on your DAT!

[Back to Home](#)