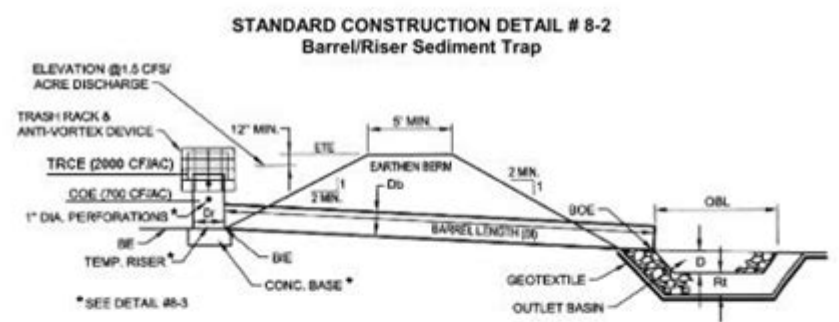


Pa Dep Es Manual



PA DEP

NOTE: This table is intentionally blank and should be filled in by the plan preparer.

			RISER			BARREL			EMBANKMENT		CLEAN OUT		BOTTOM
Trap NO.	Z1 (FT)	Z2 (FT)	DIA Or MAT'L	CREST ELEV TRCE (FT)	BOT. PERF. ELEV (FT)	DIA Or MAT'L	INLET ELEV BIE (FT)	LENGTH BI (FT)	OUTLET ELEV BOE (FT)	TOP ELEV ETE (FT)	TOP WIDTH Etw (FT)	OUT ELEV COE (FT)	ELEV BE (FT)

TRAP NO.	CONCRETE BASE			OUTLET BASIN				
	LENGTH CBI (IN)	WIDTH CBw (IN)	THICKNESS CBI (IN)	RIPRAP SIZE (R-)	Rock Thickness Rt (IN)	DEPTH D (IN)	WIDTH OBW (FT)	LENGTH OBL (FT)

Fill material for the embankments shall be free of roots, or other woody vegetation, organic material, large stones, and other objectionable materials. The embankment shall be compacted in layered lifts of not more than 6" to 9". The maximum rock size shall be no greater than 2/3 the lift thickness.

Upon completion, the embankment shall be seeded and mulched or otherwise stabilized according to the specifications of the E&S plan drawings.

All sediment traps shall be inspected at least weekly and after each runoff event.

Access for sediment removal and other required maintenance activities shall be provided.

A clean out stake shall be placed near the center of each trap. Accumulated sediment shall be removed when it has reached the clean out elevation on the stake and the trap restored to its original dimensions. Dispose of materials removed from the trap in the manner described in the E&S plan.

Check embankments, spillways, and outlets for erosion, piping and settlement. Clogged or damaged spillways and/or embankments shall be immediately restored to the design specifications.

Displaced riprap within the outlet protection shall be replaced immediately.

pa dep es manual is a crucial document for individuals involved in various operational tasks within organizations, particularly in industries that deal with processes that require strict adherence to protocols. This manual serves as a comprehensive guide, outlining procedures, responsibilities, and best practices that ensure both efficiency and compliance with regulatory standards. In this article, we will explore what a PA DEP ES Manual is, its significance, the key components it typically includes, and tips for effectively implementing it within your organization.

Understanding PA DEP ES Manual

PA DEP, which stands for Pennsylvania Department of Environmental Protection, focuses on protecting the environment and public health. The Environmental Stewardship (ES)

aspect emphasizes sustainable practices and adherence to environmental regulations. A PA DEP ES Manual is designed to help organizations comply with these regulations while promoting environmental stewardship.

What is a PA DEP ES Manual?

A PA DEP ES Manual is a structured document that outlines the policies, procedures, and operational guidelines necessary for environmental compliance. It acts as a reference for staff at all levels, ensuring that everyone understands their roles in maintaining environmental standards. The manual often includes:

- Regulatory Requirements: Detailed explanation of local, state, and federal environmental laws.
- Best Practices: Guidelines on how to minimize environmental impact in daily operations.
- Emergency Procedures: Steps to follow in case of an environmental incident.
- Training Resources: Information on training programs for employees to ensure they are aware of and understand environmental responsibilities.

The Importance of a PA DEP ES Manual

Implementing a well-structured PA DEP ES Manual is essential for several reasons:

1. Compliance with Regulations

One of the primary functions of the PA DEP ES Manual is to ensure compliance with existing environmental laws. Organizations that fail to comply risk facing legal consequences, including fines and sanctions. A comprehensive manual helps mitigate such risks by providing clear guidelines on what is required.

2. Promoting Environmental Stewardship

The manual encourages organizations to adopt sustainable practices. By following its guidelines, companies can significantly reduce their environmental footprint, contribute positively to their communities, and improve their public image.

3. Enhancing Operational Efficiency

A PA DEP ES Manual streamlines processes within an organization. By clearly defining roles and responsibilities, employees can work more efficiently, reducing the chances of errors that could lead to environmental violations.

4. Training and Development

Having a manual provides a structured approach to training employees. It serves as a reference point for training programs, ensuring that all staff members are adequately informed about their environmental responsibilities.

Key Components of a PA DEP ES Manual

A well-structured PA DEP ES Manual should include several key components to be effective. Here's a breakdown of these elements:

1. Introduction and Purpose

This section outlines the manual's objectives, the importance of environmental compliance, and a brief overview of the organization's commitment to environmental stewardship.

2. Regulatory Framework

Detailed information about the laws and regulations that govern environmental practices in Pennsylvania. This may include:

- Federal Environmental Laws
- State-specific Regulations
- Local Ordinances

3. Roles and Responsibilities

Clearly defined roles for each team member regarding environmental compliance. This section should outline:

- Management Responsibilities
- Employee Duties
- Compliance Officers

4. Procedures for Compliance

Step-by-step guidelines on how to comply with environmental regulations. This may include:

- Waste Management Procedures
- Pollution Prevention Strategies
- Reporting and Documentation Processes

5. Training Programs

Information about training sessions that educate employees on environmental policies and procedures. This section should include:

- Mandatory Training Requirements
- Schedule of Training Sessions
- Resources for Additional Learning

6. Emergency Response Plan

Procedures for responding to environmental incidents, including:

- Spill Response Procedures
- Contact Information for Emergency Services
- Reporting Requirements

7. Monitoring and Auditing

This section should outline how the organization will monitor compliance and the processes for conducting audits. Key points may include:

- Frequency of Audits
- Responsibility for Monitoring
- Procedures for Addressing Non-compliance

Effective Implementation of a PA DEP ES Manual

To ensure that a PA DEP ES Manual is effective, organizations must focus on its implementation. Here are some tips to help with the process:

1. Leadership Commitment

Leadership must demonstrate a commitment to environmental compliance. This sets a tone for the entire organization and reinforces the importance of the manual.

2. Employee Involvement

Engaging employees in the development and implementation of the manual ensures that it is practical and applicable to their daily operations. Encourage feedback and suggestions from staff.

3. Regular Training

Conduct regular training sessions to keep employees informed about updates to the manual and any changes in regulations. This reinforces the importance of compliance and keeps environmental issues top of mind.

4. Periodic Review and Updates

The manual should be a living document that is reviewed and updated regularly to reflect changes in regulations, organizational structure, or operational processes.

5. Open Communication Channels

Establish open lines of communication for employees to report environmental concerns or ask questions about policies and procedures. This helps create a culture of transparency and accountability.

Conclusion

In conclusion, a PA DEP ES Manual is an invaluable resource for organizations aiming to achieve compliance with environmental regulations while promoting sustainability. By understanding its components and implementing it effectively, organizations can not only protect the environment but also enhance their operational efficiency and reputation. As environmental concerns continue to grow, having a comprehensive ES manual will be crucial in navigating the complexities of regulatory compliance and fostering a culture of environmental responsibility.

Frequently Asked Questions

What is a PA DEP ES manual?

The PA DEP ES manual refers to the Pennsylvania Department of Environmental Protection's Environmental Site Assessment manual, which provides guidelines for conducting site assessments to evaluate environmental conditions.

Why is the PA DEP ES manual important for environmental assessments?

The PA DEP ES manual is crucial because it establishes standardized procedures and criteria for assessing environmental impact, ensuring compliance with state regulations and protecting public health and the environment.

How can I access the PA DEP ES manual?

The PA DEP ES manual can be accessed online through the Pennsylvania Department of Environmental Protection's official website, where it is available as a downloadable PDF.

What are the key components of the PA DEP ES manual?

Key components of the PA DEP ES manual include guidelines for site characterization, data collection methods, risk assessment strategies, and reporting requirements.

Who should use the PA DEP ES manual?

The PA DEP ES manual is intended for environmental professionals, consultants, and regulatory agencies involved in environmental assessments, remediation projects, and compliance monitoring.

Are there updates to the PA DEP ES manual?

Yes, the PA DEP ES manual is periodically updated to reflect changes in regulations, best practices, and technological advancements in environmental assessments.

Find other PDF article:

<https://soc.up.edu.ph/65-proof/files?trackid=CdI04-5999&title=walgreens-hourly-team-member-assessment-answers.pdf>

Pa Dep Es Manual

1000000 kpa = 1000000000 pa? 1000000

Dec 8, 2024 · 1 kPa = 1000 Pa? 1.01325 × 10⁵ Pa = 101.325 kPa
1 kPa = 1 bar / 100,000 ...

□□□□pa□Mpa□Gpa□□□□□□□□□□□□

760

Mpa KPa pa

Mpa KPa pa 106 Mpa, 106 pa = 1 Mpa ...

PP/PA

PP/PA Polyamide (Nylon) PA PA6 PA66 PA1010 PA46 PA12 PA11 PA ...

FORUM PA 2025: i cinque scenari dedicati alla “PA aumentata”

Apr 30, 2025 · Al FORUM PA di maggio troverete appuntamenti grandi scenari per cinque grandi obiettivi da perseguire attraverso la costruzione di una PA aumentata da persone, tecnologie e ...

PA 2025: le tre sfide per l'innovazione che non possiamo perdere

Jan 24, 2025 · La PA deve guidare il Paese attraverso tre transizioni chiave: digitale, demografica ed ecologica. Grazie al PNRR, si punta su riforme e innovazioni tecnologiche. La sfida ...

Trasformazione digitale: tutti i trend dell'innovazione PA 2025-2026

Apr 16, 2025 · In attesa di FORUM PA 2025, in collaborazione con Liferay abbiamo riassunto i principali trend dell'innovazione della PA 2025-2026.

Formazione per una PA innovativa: le Academy a FORUM PA 2025

Apr 18, 2025 · Saranno circa 40 i momenti di formazione gratuita con le Academy a FORUM PA 2025. Professionisti ed esperti condivideranno la loro conoscenza affrontando tematiche ...

“Premio PA aumentata”: scopri come partecipare!

FORUM PA 2025 (dal 19 al 21 maggio al Palazzo dei Congressi di Roma) sarà, come sempre, una grande occasione per valorizzare progetti realizzati con l'obiettivo di rendere la PA ...

1mA=1000uA1uA=1000nA1nA=1000pA

Sep 24, 2012 · 1mA=1000uA1uA=1000nA1nA=1000pA 10³u=10⁶n 10⁹p=10¹²

1kPa=1000Pa

Dec 8, 2024 · 1kPa=1000Pa 1.01325×10⁵Pa=101.325kPa 1bar=100,000Pa ...

1Mpa=1000kPa1Gpa=1000Mpa

760 ...

1Mpa=1000kPa1kPa=1000Pa

106Mpa, 106Pa=1Mpa ...

PP/PA

PP/PA Polyamide (Nylon) PA PA6 PA66 PA1010 PA46 PA12 PA11 PA ...

FORUM PA 2025: i cinque scenari dedicati alla “PA aumentata”

Apr 30, 2025 · Al FORUM PA di maggio troverete appuntamenti grandi scenari per cinque grandi obiettivi da perseguire attraverso la costruzione di una PA aumentata da persone, tecnologie e ...

PA 2025: le tre sfide per l'innovazione che non possiamo perdere

Jan 24, 2025 · La PA deve guidare il Paese attraverso tre transizioni chiave: digitale, demografica ed ecologica. Grazie al PNRR, si punta su riforme e innovazioni tecnologiche. La sfida ...

Trasformazione digitale: tutti i trend dell'innovazione PA 2025-2026

Apr 16, 2025 · In attesa di FORUM PA 2025, in collaborazione con Liferay abbiamo riassunto i principali trend dell'innovazione della PA 2025-2026.

Formazione per una PA innovativa: le Academy a FORUM PA 2025

Apr 18, 2025 · Saranno circa 40 i momenti di formazione gratuita con le Academy a FORUM PA 2025. Professionisti ed esperti condivideranno la loro conoscenza affrontando tematiche ...

"Premio PA aumentata": scopri come partecipare!

FORUM PA 2025 (dal 19 al 21 maggio al Palazzo dei Congressi di Roma) sarà, come sempre, una grande occasione per valorizzare progetti realizzati con l'obiettivo di rendere la PA ...

Unità di misura: pA, nA, uA, mA

Sep 24, 2012 · Unità di misura: $1mA=1000uA, 1uA=1000nA, 1nA=1000pA, 10^{-3}uA=10^{-6}nA, 10^{-9}pA=10^{-12}$

Unlock the secrets of the PA DEP ES manual! Discover how to navigate environmental regulations effectively. Learn more about compliance and best practices today!

[Back to Home](#)