

Pals Questions And Answers

PALS Questions and Answers with Complete Solutions

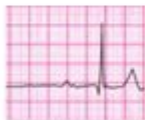
VT converting to sinus rhythm after adenosine administration



Sinus bradycardia



Sinus bradycardia - version 2



Normal sinus rhythm



Asystole

PALS questions and answers are essential components of pediatric advanced life support (PALS) training and certification. PALS is a crucial course designed for healthcare providers who respond to emergencies involving infants and children. Understanding the key concepts, protocols, and algorithms involved in pediatric emergencies can significantly improve outcomes in critical situations. In this article, we will delve into PALS questions and answers, explore the core topics encompassed in the PALS curriculum, and provide tips for successful examination preparation.

Understanding PALS

PALS is a specialized course that focuses on the assessment and management of critically ill infants and

children. It is recommended for healthcare professionals who work in emergency settings, such as emergency medicine physicians, nurses, paramedics, and respiratory therapists. The course covers various topics, including:

- Recognition of cardiopulmonary arrest
- Management of respiratory distress and failure
- Defibrillation and medication administration
- The importance of high-quality CPR
- Post-resuscitation care

The PALS course is structured around algorithms and protocols that guide healthcare providers in making quick and effective decisions in emergency situations.

PALS Course Structure

The PALS course typically includes both classroom instruction and hands-on skills practice. The following sections outline the primary components:

1. Pre-course Preparation

Before attending the PALS course, participants are encouraged to complete the following:

- Review the PALS Provider Manual.
- Familiarize themselves with basic pediatric anatomy and physiology.
- Understand the differences between adult and pediatric resuscitation techniques.

2. Classroom Training

Classroom training covers:

- The assessment and recognition of pediatric emergencies.
- The use of algorithms, including the PALS flowchart.
- Pharmacology related to pediatric emergencies.

3. Skills Practice

Hands-on practice sessions allow participants to:

- Perform high-quality CPR on mannequins.
- Practice using an automated external defibrillator (AED).
- Conduct team-based simulations of emergency scenarios.

4. Written and Practical Exams

Upon completion of the course, participants must pass both a written exam and a practical skills test to receive their PALS certification.

Common PALS Questions and Answers

PALS exams cover various topics, and understanding these questions can enhance preparation. Below are some common PALS questions and their answers, categorized by topic.

1. Cardiopulmonary Resuscitation (CPR)

Question: What is the recommended compression-to-ventilation ratio for pediatric CPR?

Answer: The recommended compression-to-ventilation ratio is 30:2 for single rescuers and 15:2 for two rescuers, regardless of the age of the child.

Question: What is the preferred depth of chest compressions for infants and children?

Answer: For infants, compressions should be about 1.5 inches (4 cm), and for children, compressions should be about 2 inches (5 cm) deep.

2. Defibrillation

Question: When should an AED be used in pediatric patients?

Answer: An AED should be used as soon as it is available for any patient experiencing a cardiac arrest, in conjunction with high-quality CPR.

Question: What is the appropriate energy dose for defibrillation in pediatric patients?

Answer: The initial dose for defibrillation in children is 2-4 J/kg, and if necessary, subsequent shocks can be delivered at 4 J/kg.

3. Medication Administration

Question: What is the first-line medication for bradycardia with poor perfusion in pediatric patients?

Answer: Atropine is the first-line medication for bradycardia in children, with a typical dose of 0.02 mg/kg.

Question: What is the recommended dose of epinephrine during cardiac arrest in pediatric patients?

Answer: The recommended dose of epinephrine is 0.01 mg/kg (0.1 mL/kg of a 1:10,000 solution) every 3-5 minutes during cardiopulmonary resuscitation.

4. Post-Resuscitation Care

Question: What are the critical components of post-resuscitation care?

Answer: Key components include:

- Monitoring vital signs and oxygenation
- Identifying and treating the cause of the arrest
- Maintaining normothermia
- Assessing neurological function

Question: How should a child be monitored after successful resuscitation?

Answer: Continuous monitoring of heart rate, blood pressure, oxygen saturation, and respiratory status is essential. Additionally, neurological status should be assessed frequently.

Tips for Preparing for the PALS Exam

Preparing for the PALS exam can be challenging, but with the right strategies, you can enhance your chances of success. Here are some effective tips:

1. Study the PALS Provider Manual

The PALS Provider Manual is an invaluable resource that covers all the essential information. Thoroughly reading and understanding this manual is crucial.

2. Practice Algorithms

Familiarize yourself with PALS algorithms, including the flowcharts for various emergencies. Practicing these algorithms will help you recall them during the exam.

3. Engage in Hands-on Practice

Participate in hands-on training sessions to reinforce your knowledge. Practicing CPR, using an AED, and administering medications will help build your confidence.

4. Take Practice Exams

Utilize online resources or study groups to take practice exams. This will help you become more comfortable with the exam format and identify areas needing improvement.

5. Form Study Groups

Collaborating with peers can enhance learning. Discussing topics and quizzing each other can provide different perspectives and reinforce knowledge.

6. Manage Your Time Effectively

During the exam, time management is essential. Skim through the questions first, answer the ones you know, and return to the more challenging ones later.

Conclusion

PALS questions and answers are fundamental to mastering pediatric advanced life support protocols and achieving certification. By understanding the core components of PALS, familiarizing yourself with common questions, and engaging in thorough preparation, healthcare professionals can enhance their ability to respond effectively in emergencies involving children. The knowledge gained through PALS training not only benefits the healthcare provider but ultimately leads to better outcomes for pediatric patients in critical situations.

Frequently Asked Questions

What are PALS questions and answers?

PALS questions and answers refer to the Pediatric Advanced Life Support (PALS) certification process, which includes a series of questions and answers that test knowledge on pediatric emergency care.

How can I prepare for PALS certification?

To prepare for PALS certification, review the PALS provider manual, take practice exams, and participate in hands-on training courses to reinforce your knowledge and skills.

What topics are covered in PALS questions?

PALS questions cover various topics including pediatric assessment, respiratory emergencies, cardiac emergencies, medication dosages, and resuscitation techniques.

Where can I find PALS practice questions?

PALS practice questions can be found in official study guides, online courses, and various medical training websites that specialize in pediatric emergency care.

Are there free resources for PALS questions and answers?

Yes, there are several free resources available online, including sample questions from healthcare training websites and community forums where professionals share study materials.

How often should I renew my PALS certification?

PALS certification should be renewed every two years to ensure that healthcare providers stay current with the latest guidelines and practices in pediatric emergency care.

What is the format of PALS exam questions?

PALS exam questions typically consist of multiple-choice questions that assess clinical knowledge, decision-making skills, and understanding of emergency protocols related to pediatric patients.

Find other PDF article:

<https://soc.up.edu.ph/46-rule/files?dataid=wiR50-2961&title=perks-of-being-a-wallflower-by-stephen-chbosky.pdf>

Pals Questions And Answers

pals They both mean the same thing. Pals is a little more informal and I would say less commonly used. Ex: I went to the mall with my pals yesterday. I went to the mall with my ...

"gal pals" ? - ()

"gal pals" ? friends that are girls/female. sometimes said as girl friends. |Female friends, it's just kind of like a cutesy way for a girl to call her female friend. For example, we're gal pals or ...

"very soul" - () | HiNative

very soul@sprooout Very soul, very heart, very being... It means your innermost self. It isn't simply "a lot" like very hot or very green. |@sprooout Very is used before a noun (like soul) to ...

"ex-colleague" "former colleague" | HiNative

ex-colleague It means the same thing. |There isn't one. Ex sounds more casual. I would use former more. You can use them interchangeably in all cases but ex-boyfriend or girlfriend. I ...

"prodigy" "genius" | HiNative

prodigy Age factor is one of the differences between genius and prodigy that everyone identifies immediately but there are other differences too between a genius and a prodigy. ...

"pals" "friends" | HiNative

pals They both mean the same thing. Pals is a little more informal and I would say less commonly used. Ex: I went to the mall with my pals yesterday. I went to the mall with my ...

"gal pals" ? - ()

"gal pals" ? friends that are girls/female. sometimes said as girl friends. |Female friends, it's just kind of like a cutesy way for a girl to call her female friend. For example, we're gal pals or ...

"very soul" - () | HiNative

very soul@sprooout Very soul, very heart, very being... It means your innermost self. It isn't simply "a lot" like very hot or very green. |@sprooout Very is used before a noun (like soul) to ...

"ex-colleague" "former colleague" | HiNative

ex-colleague It means the same thing. |There isn't one. Ex sounds more casual. I would use former more. You can use them interchangeably in all cases but ex-boyfriend or girlfriend. ...

"prodigy" "genius" | HiNative

prodigy Age factor is one of the differences between genius and prodigy that everyone identifies immediately but there are other differences too between a genius and a prodigy. ...

Discover engaging pals questions and answers to strengthen your friendships! Explore fun conversation starters and deepen your connections. Learn more!

[Back to Home](#)