

Paleopathology Is The Study Of

HISTORICAL BIOLOGY
<https://doi.org/10.1080/08912963.2023.2166833>

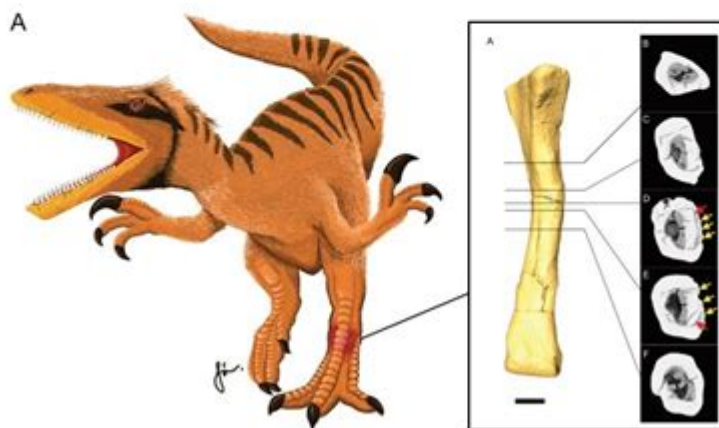


Check for updates

An unusual metatarsal of theropod dinosaur from the lower cretaceous of Thailand: the first detailed study of paleopathology in Megaraptora

Adun Samathi^{a,b}, Jakkrapat Weluwanarak^c, Punyawee Duanyai^c, Siripat Kaikaew^{b,c} and Suravech Suteethorn^{b,c}

^aBiodiversity and Conservation Research Unit, Walai Rukhavej Botanical Research Institute, Mahasarakham University, Maha Sarakham, Thailand; ^bDinosaur Research Unit, Mahasarakham University, Maha Sarakham, Thailand; ^cDepartment of Biology, Faculty of Science, Mahasarakham University, Maha Sarakham, Thailand



Paleopathology is the study of ancient diseases and injuries as revealed through the examination of skeletal remains and mummified bodies. This fascinating field lies at the intersection of archaeology, anthropology, and medicine, providing invaluable insights into the health, lifestyles, and environments of past populations. By analyzing physical evidence of disease, paleopathologists can reconstruct the prevalence and impact of various health conditions, contributing to our understanding of human history and evolution.

The Origins and Development of Paleopathology

Paleopathology has its roots in the early study of human remains. The term itself was coined in the late 19th century, but the practice of examining ancient bodies dates back much further.

Historical Context

- Ancient Civilizations: Early civilizations, such as the Egyptians, actively engaged in practices that would later contribute to paleopathology. Mummification preserved bodies, allowing for the study of health conditions.
- 19th Century Advances: The field began to formalize in the 1800s, particularly with the advent of scientific methods in archaeology and medicine. Researchers started to apply modern medical knowledge to the study of ancient remains.
- 20th Century Growth: The development of radiological techniques and other diagnostic tools in the 20th century significantly advanced the study of paleopathology. These technologies allowed for non-invasive examinations of skeletal remains, leading to more accurate diagnoses.

Key Figures in Paleopathology

Several prominent figures have shaped the field of paleopathology:

1. Sir Marc Armand Ruffer: Often regarded as the father of paleopathology, Ruffer was instrumental in establishing the discipline. His work on Egyptian mummies in the late 19th century set the groundwork for future research.
2. George A. C. B. M. H. McGowan: A significant contributor to the field, McGowan focused on the relationship between disease and social conditions in ancient populations.
3. Clair L. Smith: Smith's research on ancient diseases helped to broaden the understanding of how environmental factors influenced health in past societies.

Methods in Paleopathology

Paleopathologists employ a variety of methods to study ancient diseases and injuries. The analysis of skeletal remains, along with advanced imaging techniques, plays a crucial role in uncovering the past.

Osteological Analysis

The primary method used in paleopathology is osteological analysis, which involves the study of bones to identify signs of disease or trauma. Key aspects include:

- Bone Morphology: Changes in bone shape and structure can indicate various conditions, such as arthritis, infections, or nutritional deficiencies.
- Pathological Markers: Specific indicators, such as lesions, deformities, and evidence of healing, can be assessed to diagnose ancient diseases.
- Differential Diagnosis: Paleopathologists must differentiate between pathological changes and those resulting from normal variation or taphonomic processes (changes due to burial conditions).

Imaging Techniques

Advancements in imaging technology have revolutionized paleopathology. Common techniques include:

- X-ray Imaging: Provides clear images of bone structure and any abnormalities present.
- CT Scanning: Offers detailed cross-sectional images, allowing for a better understanding of internal structures and pathologies.
- MRI: Though less commonly used due to the nature of skeletal studies, MRI can provide valuable information about soft tissue conditions in mummified remains.

Common Diseases and Conditions Studied

Paleopathologists have identified a wide range of diseases and conditions through their research. Some of the most commonly studied include:

Infectious Diseases

- Tuberculosis (TB): Evidence of TB can be found in the bones of ancient populations, often manifesting as lesions in the spine and ribs.
- Syphilis: Characteristic bone changes associated with syphilis have been documented in skeletal remains, particularly during the late medieval period.
- Leprosy: This chronic infectious disease can lead to distinctive bone changes, making it identifiable in archaeological contexts.

Degenerative Conditions

- Arthritis: Various forms of arthritis have been observed in ancient remains, providing insights into the prevalence of joint diseases in different populations.
- Osteoporosis: Signs of bone density loss can indicate dietary deficiencies or other health issues prevalent in ancient societies.

Trauma and Injuries

Paleopathological studies often reveal evidence of trauma:

- Fractures: Healed fractures can provide information on the types of activities and accidents that occurred in ancient populations.
- Violence: Skeletal evidence of violent injuries can shed light on social dynamics and conflict in past societies.

The Importance of Paleopathology

Paleopathology is crucial for several reasons, contributing to our understanding of human history, health, and evolution.

Understanding Ancient Populations

- Health and Nutrition: By studying the ailments and injuries suffered by ancient peoples, paleopathologists can infer dietary practices and nutritional status.
- Social Structures: Analysis of health conditions can reveal insights into social hierarchies, trade, and the impact of environment on health.

Evolutionary Insights

Paleopathology provides a unique perspective on the evolution of diseases. By studying ancient populations, researchers can trace the emergence and adaptation of pathogens over time.

Public Health Implications

Understanding ancient diseases can inform modern public health initiatives. By recognizing how past societies dealt with diseases, contemporary health professionals can develop strategies to combat similar issues today.

Challenges in Paleopathology

Despite its many contributions, paleopathology faces several challenges:

Preservation Issues

The preservation of skeletal remains can vary significantly based on environmental conditions. Factors such as soil acidity, temperature, and moisture levels can impact the integrity of bones, making them more difficult to study.

Interpretation Challenges

- Differentiating Pathologies: Accurately diagnosing ancient diseases can be challenging, as many conditions present similar skeletal changes.
- Cultural Context: Understanding the cultural and social context of a population is essential for accurate interpretation, which requires interdisciplinary collaboration.

The Future of Paleopathology

As technology continues to advance, the field of paleopathology is poised for growth. New imaging techniques, genetic analysis, and interdisciplinary approaches promise to deepen our understanding of ancient diseases.

- Collaboration with Geneticists: The study of ancient DNA can provide insights into the pathogens that affected historical populations, enhancing our understanding of disease evolution.
- Integration with Archaeology: Collaborating with archaeologists can provide a broader context for

understanding health in ancient societies, enriching the narrative of human history.

Conclusion

In conclusion, paleopathology is a vital field that illuminates the health, diseases, and lifestyles of ancient populations. By examining skeletal remains and employing advanced techniques, paleopathologists unravel the complexities of human history. As the field continues to evolve, it will undoubtedly yield new insights that enrich our understanding of the past and inform contemporary health practices.

Frequently Asked Questions

What is paleopathology?

Paleopathology is the study of ancient diseases in humans and animals through the examination of skeletal remains and mummies.

How does paleopathology contribute to our understanding of historical populations?

Paleopathology provides insights into the health, diet, and lifestyle of historical populations by analyzing the evidence of diseases and injuries in skeletal remains.

What types of diseases are commonly studied in paleopathology?

Common diseases studied in paleopathology include tuberculosis, syphilis, leprosy, and various forms of arthritis, as well as trauma-related injuries.

What methods do paleopathologists use to analyze skeletal remains?

Paleopathologists use methods such as radiographic imaging, histological analysis, and macroscopic examination to identify signs of disease and trauma in skeletal remains.

What is the significance of studying paleopathology in archaeology?

Studying paleopathology in archaeology is significant because it helps reconstruct past health conditions, social structures, and the impact of environmental changes on human populations.

Can paleopathology provide information about ancient diets?

Yes, paleopathology can provide information about ancient diets by examining dental health, isotopic analysis of bones, and the presence of specific diseases related to nutritional deficiencies.

Find other PDF article:

<https://soc.up.edu.ph/18-piece/Book?docid=ndc00-2014&title=dungeons-and-dragons-dm-screen.pdf>

[Paleopathology Is The Study Of](#)

[Opening Hentai Videos Porno | Pornhub.com](#)

¡No hay otro canal de sexo más popular y que presente más Opening Hentai escenas que Pornhub! Navega a través de nuestra impresionante selección de videos porno en calidad HD ...

Opening Hentai Porn Videos | Pornhub.com

Watch Opening Hentai porn videos for free, here on Pornhub.com. Discover the growing collection of high quality Most Relevant XXX movies and clips. No other sex tube is more ...

Hentai Ouji to Warawanai Neko Opening Sub Español - YouTube

Opening de The "Hentai" Prince And The Stony Cat (Hentai Ouji to Warawanai Neko) con karaokes y subtítulos en Español por Ero~Subs.

Mankitsu Happening Hentai - Hentaila - Ver Hentai en Español

Debido a una serie de extrañas coincidencias, ¡siempre parece terminar teniendo sexo con todas las compañeras de trabajo! Aunque espera finalmente terminar con este ciclo mortal, Keiichi ...

ICCHAE! (OPENING HENTAI GAME) (EN ESPAÑOL) - Popotan

Popotan - Ichhae! (Opening Hentai Game) (EN ESPAÑOL) (Letra y canción para escuchar) - Watashi icchau!! *icchau / Yuki dashite icchau!! *icchau / Honto no watashi no kimochi ...

Opening - Hentai Ouji to Warawanai Neko Sub-ingles | Opening ...

Opening del anime Hentai Ouji to Warawanai Neko. Youto Yokodera es un estudiante de instituto que está más salido que el pico de una mesa, pero cada vez que demuestra lo perverso que ...

Fantastic Future | Henneko Wiki | Fandom

Fantastic Future is the opening theme to the The "Hentai" Prince and the Stony Cat anime. It made it's debut alongside the first episode, and is performed by Yukari Tamura.

Anime Lyrics dot Com - Fantastic future - Hentai Ouji to ...

In kanji view, mouseover a kanji character for lookup information! dakara kotchi muite guuzen ja nai FantaFuture! daisuki aitakatta nan demo dekiru FantaFuture! See an error in these lyrics? ...

Hentai Ouji to Warawanai Neko Opening | Creditless | CC | 4K ...

Opening from Hentai Ouji to Warawanai Neko. Upscaled and Enhanced using AI. ☐ Powered by: ...more

Hentai Openings - playlist by Matzl | Spotify

Sign up to get unlimited songs and podcasts with occasional ads. No credit card needed.

[Modificare le autorizzazioni relative alle impostazioni dei siti ...](#)

Puoi impostare le autorizzazioni per un sito senza modificare le impostazioni predefinite. Gestire le autorizzazioni dei siti Puoi consentire o negare facilmente l

Why is google not allowing me to search for porn or anything adult ...

Why is google not allowing me to search for porn or anything adult entertainment? Started yesterday - Google Search Community Help Center Community Improve your ...

Fix issues with SafeSearch - Google Search Help

If you have issues with SafeSearch, try the steps below to help fix the issue. Check if your SafeSearch setting is locked Your SafeSearch setting can be set to "Filter" and locked by your ...

Porque las paginas porno mas populares no me cargan sale horror ...

Las paginas de pornografia mas populares no me cargan sale error de conexion y este error ERR_CONNECTION_REFUSED

Richtlinien zu Nacktheit und sexuellen Inhalten - YouTube-Hilfe

Anstößige Inhalte, die der sexuellen Befriedigung dienen, sind auf YouTube nicht erlaubt. Das Veröffentlichen pornografischer Videos kann dazu führen, dass die Inhalte entfernt werden oder ...

How to turn off safe search so I can see adult content

It's not working my bro, the safe search is such as in North Korea where so many things are not allowed ok, tell me how I can remove the safe search because I want to watch to adult content ...

[Remove all pornography websites - Google Search Community](#)

Remove all porn adult movies websites images nude pictures removed all

[Google Zoeken Help](#)

Het officiële Helpcentrum van Google Zoeken. Hier vind je alle informatie over hoe je met Google met het beste resultaat op internet zoekt. Ook vind je hier informatie over het verwijderen van ...

Search with an image on Google - Computer - Google Search Help

You can learn more about an image or the objects around you with Google Lens. For example, you can take a photo of a plant and use it to search for info or other similar images. What you find ...

Discover how paleopathology is the study of ancient diseases and injuries

[Back to Home](#)