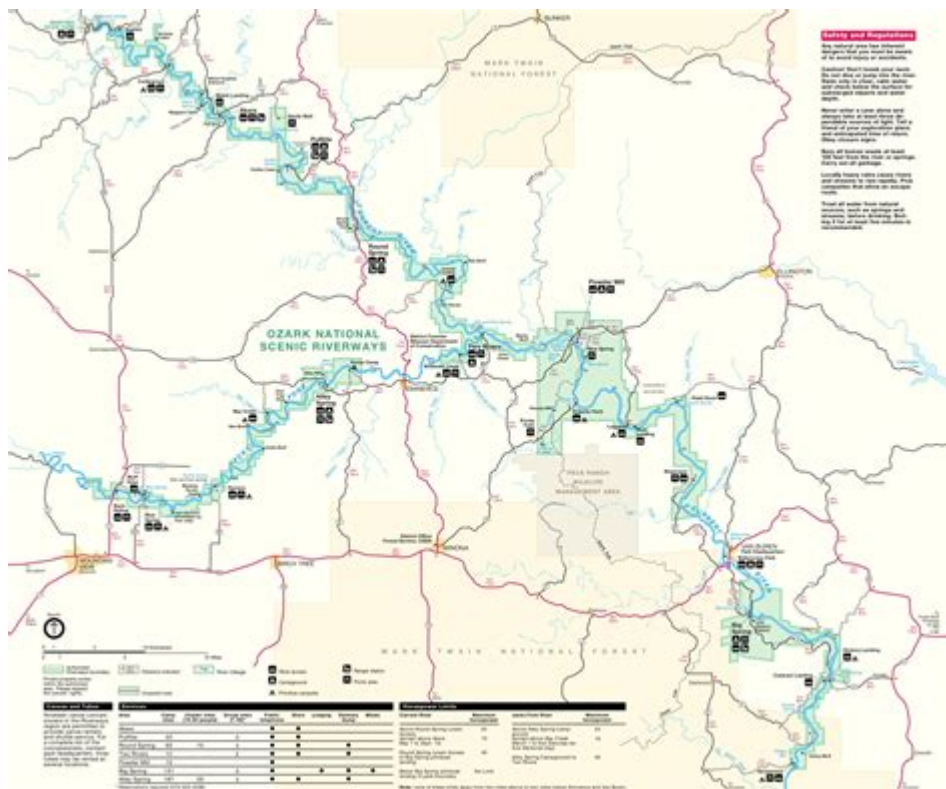


Ozark National Scenic Riverways Map



Ozark National Scenic Riverways Map is an essential tool for anyone looking to explore the stunning natural beauty and diverse recreational opportunities offered by this unique national park. Located in southern Missouri, the Ozark National Scenic Riverways is the first national park in the United States established to protect a river system, specifically the Current and Jacks Fork rivers. The park encompasses over 80,000 acres of lush forests, limestone bluffs, and crystal-clear waters, making it a premier destination for outdoor enthusiasts, families, and nature lovers alike. This article will delve into the significance of the Ozark National Scenic Riverways Map, its features, how to effectively use it, and the myriad activities available within the park.

Understanding the Ozark National Scenic Riverways

Overview of the Park

The Ozark National Scenic Riverways was designated as a national park in 1964 to preserve the natural beauty and ecological diversity of the area. The park includes:

- Two major rivers: Current River and Jacks Fork River
- Over 135 miles of floatable rivers
- A vast network of hiking trails
- Numerous campgrounds and picnic areas

This unique ecosystem is home to a wide variety of wildlife, including deer, otters, and a multitude of bird species, making it a haven for nature watchers and photographers.

Importance of the Park Map

The Ozark National Scenic Riverways Map is a crucial resource for visitors. It provides:

- Detailed information on park boundaries
- Locations of key landmarks and attractions
- Directions to trails, campgrounds, and boat launches
- Safety information regarding river conditions and wildlife

Having a well-detailed map ensures that visitors can navigate the park effectively, making the most of their outdoor adventures.

Features of the Ozark National Scenic Riverways Map

Types of Maps Available

When visiting the Ozark National Scenic Riverways, visitors have access to several types of maps, including:

1. **Trail Maps:** These maps highlight the extensive network of hiking and biking trails within the park. They typically indicate trail lengths, difficulty levels, and points of interest along the routes.
2. **River Maps:** These maps focus on the river systems, outlining float routes, access points, and important safety information regarding water conditions and hazards.
3. **Visitor Center Maps:** Available at the park's visitor centers, these maps provide a comprehensive overview of the park, including amenities, educational programs, and special events.

Key Features to Look For

When examining the Ozark National Scenic Riverways Map, several features are particularly important:

- **Scale:** A good map will feature a scale to help visitors gauge distances accurately, allowing for better planning of hikes or floats.
- **Legend:** The legend explains the symbols used on the map, indicating trails, water access points, campgrounds, and emergency services.
- **Topographic Lines:** These lines give an idea of the elevation changes in the area, which is crucial for understanding the terrain and difficulty of trails.
- **Points of Interest:** The map highlights scenic overlooks, historical sites, and picnic areas, making it easier for visitors to plan their activities.

Using the Ozark National Scenic Riverways Map

Planning Your Visit

Before heading to the park, it's essential to familiarize yourself with the Ozark National Scenic Riverways Map. Here are some steps to consider:

1. **Identify Your Interests:** Determine what activities you want to pursue, such as hiking, fishing, or

canoeing.

2. Select Your Routes: Based on your interests, pinpoint the trails or river routes you want to explore.
3. Check Accessibility: Ensure that the areas you plan to visit are accessible and check for any seasonal closures or conditions that may affect your visit.
4. Prepare for Safety: Use the map to identify nearby facilities, such as restrooms, visitor centers, and emergency services.

Navigating the Park

Once inside the park, the Ozark National Scenic Riverways Map serves as a guide for navigating the various attractions:

- Follow the Trails: Stick to marked trails to ensure safety and to protect the park's ecosystems.
- Monitor Your Location: Regularly check your position on the map to avoid getting lost, especially in the more remote areas of the park.
- Stay Informed: Pay attention to signs and notices that provide updated information about trail conditions and wildlife activity.

Activities to Enjoy at Ozark National Scenic Riverways

Water-Based Activities

One of the main draws of the Ozark National Scenic Riverways is its stunning rivers, which offer numerous recreational activities, including:

- Canoeing and Kayaking: With over 135 miles of floatable rivers, paddlers can explore serene waters surrounded by breathtaking landscapes.
- Fishing: The rivers are home to various fish species, including trout and bass, making it a popular spot for anglers.
- Swimming: Designated swimming areas provide an excellent opportunity to cool off during the hot summer months.

Land-Based Activities

In addition to water activities, the park offers a plethora of land-based adventures:

- Hiking: With over 100 miles of hiking trails, visitors can experience the beauty of the Ozarks on foot, with options ranging from easy walks to challenging hikes.
- Camping: The park features several campgrounds, allowing visitors to immerse themselves in nature overnight.
- Wildlife Watching: The diverse ecosystems provide excellent opportunities for spotting wildlife. Birdwatchers can enjoy observing migratory birds throughout the year.

Educational Opportunities

The Ozark National Scenic Riverways also offers various educational programs for visitors:

- Ranger-led Programs: These programs provide insights into the park's history, ecology, and conservation efforts.
- Visitor Centers: The park has visitor centers with exhibits that educate visitors about the unique natural and cultural history of the Ozarks.

Conclusion

The **Ozark National Scenic Riverways Map** is more than just a navigational tool; it is a gateway to exploring one of America's most beautiful natural landscapes. By understanding the park's layout, utilizing the map effectively, and engaging in the diverse range of activities available, visitors can fully appreciate the splendor of this national treasure. Whether you're paddling down the Current River, hiking through lush forests, or simply soaking in the scenic views, the Ozark National Scenic Riverways offers unforgettable experiences for everyone. So grab your map and start planning your adventure in this remarkable park!

Frequently Asked Questions

What is the Ozark National Scenic Riverways map used for?

The Ozark National Scenic Riverways map is used to navigate the park's extensive river systems, hiking trails, campgrounds, and points of interest, helping visitors plan their outdoor activities.

Where can I find a downloadable map of Ozark National Scenic Riverways?

You can find a downloadable map of Ozark National Scenic Riverways on the National Park Service website or at visitor centers within the park.

Are there specific maps for different activities within Ozark National Scenic Riverways?

Yes, there are specific maps available for various activities such as canoeing, hiking, and camping, each highlighting relevant trails and waterways.

Is there a mobile app for navigating Ozark National Scenic Riverways?

Yes, there are several mobile apps available that provide maps and information about Ozark National Scenic Riverways, including offline capabilities for use in remote areas.

What features are highlighted on the Ozark National Scenic

Gore-Tex
 YKK
 ITW

-

Mar 31, 2024 · Ozark Season 3 8.5(10669) : / / : / / : / / : 2020 2024-03-31 16:50:02 > Ozark Season 4 8.6(8936) ...

-

Ozark · · · · ·

Explore the Ozark National Scenic Riverways map for the ultimate guide to trails

[Back to Home](#)