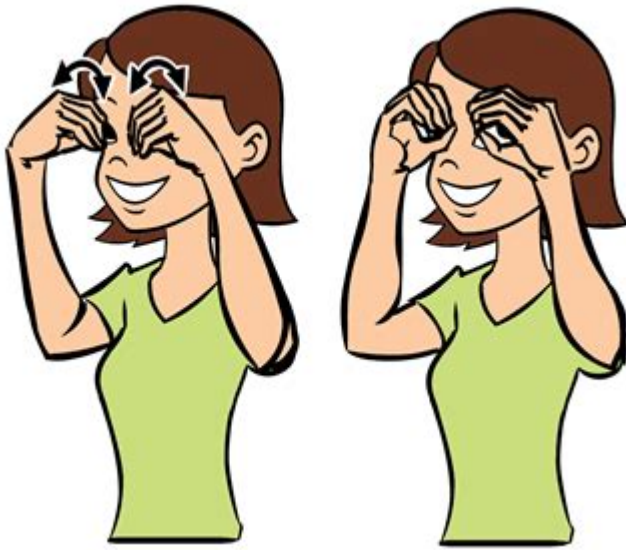


Owl In Sign Language



Owl in Sign Language is a fascinating topic that combines the beauty of nature with the expressive capabilities of sign language. Owls, known for their wisdom and nocturnal habits, hold a significant place in various cultures and folklore. When it comes to communicating about these majestic birds, learning their sign language representation can enhance understanding and appreciation for both the animal and the language itself. In this article, we will explore the significance of owls, the basic signs used to represent them in sign language, and how to effectively communicate about owls with the deaf and hard-of-hearing communities.

Understanding Sign Language

What is Sign Language?

Sign language is a visual means of communication that uses hand shapes, facial expressions, and body movements to convey meaning. Unlike spoken languages, sign languages are fully developed languages with their own grammar and syntax. They are used primarily by deaf and hard-of-hearing individuals, but they can also be learned by hearing individuals to communicate with those who use sign language.

The Importance of Learning Sign Language

Learning sign language can have numerous benefits:

- **Enhanced Communication:** It allows for effective communication with deaf and hard-of-hearing individuals.
- **Cultural Awareness:** Understanding sign language fosters appreciation for

the deaf community and its culture.

- Cognitive Skills: Learning a new language, including sign language, can improve cognitive abilities such as memory and problem-solving.
- Inclusivity: It promotes inclusiveness and accessibility in various social settings.

Owl Symbolism and Significance

Cultural Significance of Owls

Owls are often associated with wisdom, mystery, and knowledge. Various cultures have revered owls for their unique characteristics, such as their ability to see in the dark and their silent flight. Here are some cultural beliefs about owls:

1. Native American Beliefs: Many Native American tribes believe owls are messengers from the spirit world, often associated with death or change.
2. Greek Mythology: The owl is associated with Athena, the goddess of wisdom, symbolizing knowledge and learning.
3. Eastern Cultures: In some Asian cultures, owls are seen as protectors and are believed to bring good fortune.

Why Learn the Sign for Owl?

Learning the sign for "owl" can be particularly useful for educators, wildlife enthusiasts, and those in conservation. It allows individuals to share information about these birds and engage with the deaf community in discussions about wildlife, nature, and environmental conservation.

How to Sign 'Owl'

Basic Sign for 'Owl'

The sign for "owl" in American Sign Language (ASL) is relatively simple and straightforward. Here's how to do it:

1. Form the Handshape: Start by making a "W" shape with your dominant hand. This is done by extending your thumb, index finger, and middle finger while keeping your ring and pinky fingers curled into your palm.
2. Position the Hand: Hold your hand near your forehead, with the palm facing outward.
3. Mimic the Owl's Ears: Move your hand slightly up and down to imitate the characteristic ear tufts of certain owl species.

Variations in Other Sign Languages

While ASL is widely used in the United States and parts of Canada, sign languages can differ significantly across regions and countries. Here are a few examples:

- British Sign Language (BSL): The sign for "owl" in BSL involves a similar "W" handshape but may include more intricate movements to represent the bird's features.
- Australian Sign Language (Auslan): In Auslan, the sign for "owl" may also use a "W" shape but involves a different motion to portray the bird's specific characteristics.

It's important to learn the correct sign depending on the specific sign language being used.

Communicating About Owls in Sign Language

Describing Different Owls

When discussing owls, it's often necessary to describe different species or characteristics. Here are some vocabulary signs related to owls that you might find helpful:

- Barn Owl: Use the sign for "owl" and then sign "barn" by forming a flat "B" handshape and moving it to represent a roof.
- Great Horned Owl: Sign "owl" and then use a "C" handshape above the head to indicate the horn-like tufts.
- Nocturnal: To sign "nocturnal," use the sign for "night," which involves moving your dominant hand across your face from left to right.

Engaging in Conversations About Owls

When engaging in conversations about owls, consider incorporating descriptive language and storytelling techniques to make your communication more engaging. Here are some tips:

1. Use Facial Expressions: Sign language is not just about hand movements; facial expressions play a crucial role in conveying emotions and emphasizing certain points.
2. Incorporate Movement: Use your body to demonstrate how owls fly or hunt. This can add a dynamic element to your conversation.
3. Share Interesting Facts: Engage your audience by sharing fascinating facts about owls, such as their hunting techniques, habitat, and role in the ecosystem.

Resources for Learning Sign Language

Online Courses and Classes

There are numerous resources available for individuals interested in learning sign language, including:

- Online Platforms: Websites like ASL University, Signing Savvy, and Lifeprint offer free resources and courses.
- YouTube Channels: Many YouTube channels provide tutorials on ASL signs, including those for animals like owls.
- Local Classes: Community colleges and organizations often offer sign language classes.

Books and Materials

- Sign Language Dictionaries: These can be invaluable for learning specific signs and their meanings.
- Children's Books: Books that incorporate sign language can be a fun way to learn for both children and adults.

Conclusion

In conclusion, learning the sign for "owl" and incorporating it into conversations not only enhances our communication skills but also deepens our connection to the natural world. Owls are remarkable creatures, and understanding how to discuss them in sign language opens up opportunities for greater inclusivity and awareness. Whether you are a wildlife enthusiast, an educator, or simply someone interested in learning, mastering the sign for "owl" is a step towards creating a more connected and understanding community. Through sign language, we can share our fascination with these magnificent birds and foster an appreciation for both nature and the deaf and hard-of-hearing cultures.

Frequently Asked Questions

What is the sign for 'owl' in American Sign Language (ASL)?

In ASL, the sign for 'owl' is made by placing both hands in the shape of 'W' and moving them to the sides of your face, mimicking the shape of an owl's head.

Are there different signs for 'owl' in various sign languages?

Yes, different sign languages may have unique signs for 'owl', so it's important to learn the specific sign used in the region's sign language.

How can I learn the sign for 'owl' effectively?

You can learn the sign for 'owl' by watching instructional videos, attending sign language classes, or practicing with a fluent sign language user.

What does the sign for 'owl' represent in sign language culture?

The sign for 'owl' often symbolizes wisdom and knowledge, as owls are commonly associated with these traits in various cultures.

Is there a specific context where the sign for 'owl' might be used?

The sign for 'owl' can be used in educational settings, storytelling, or discussing wildlife and nature.

Can children learn the sign for 'owl' easily?

Yes, children can learn the sign for 'owl' easily through engaging activities, stories, and visual aids that incorporate sign language.

What are some common phrases that include the sign for 'owl'?

Common phrases include 'I saw an owl' or 'The owl is wise', where the sign for 'owl' can be integrated into the conversation.

Is the sign for 'owl' universally understood across different countries?

No, the sign for 'owl' is not universally understood; each sign language has its own unique signs and variations.

What are some resources for learning animal signs, including 'owl'?

Resources include online videos, sign language dictionaries, mobile apps, and community classes focused on animal signs.

How can I practice the sign for 'owl' with others?

You can practice the sign for 'owl' with friends or in sign language meetups,

or by teaching it to others as part of a group learning session.

Find other PDF article:






<https://soc.up.edu.ph/58-view/pdf?docid=uhE47-7092&title=the-curious-baristas-guide-to-coffee.pdf>

Owl In Sign Language

OWL : Gateway : Welcome

Reminder: OWL is unavailable briefly on the last Sunday of the month from 6:00am to 6:30am ET for routine system maintenance. Please schedule assignments, assessments, and other work ...




owl/README_zh.md at main · camel-ai/owl · GitHub

Mar 7, 2025 ·  OWL  CAMEL-AI Framework  AI  

Owl - Wikipedia

Owls are divided into two families: the true (or typical) owl family, Strigidae, and the barn owl and bay owl family, Tytonidae. [2] Owls hunt mostly small mammals, insects, and other birds, ...

OWL -  - 

OWL  CAMEL-AI Framework  AI 

Owls, facts and information | National Geographic

All of the roughly 250 owl species live aboveground except for one: the burrowing owl, a small owl found in North and South America that nests in abandoned holes dug by other animals.

Owl | Types, Species, & Facts | Britannica

Jun 7, 2025 · Owl, any member of a homogeneous order of primarily nocturnal raptors found nearly worldwide. Owls are also considered to be symbols of intelligence, as well as symbols ...

Owls - Birdfact

Three species, namely the Barn Owl, Long-eared Owl, and Short-Eared Owl, occur in both countries. Continue reading to learn more about some well-known British and American Owl ...

Owl Bird Facts - A-Z Animals

May 27, 2024 · Barn Owl – The most common species of owl, the barn owl can be found all over the world except in polar regions. Barn owls have white faces on heart-shaped heads and are ...

The Owl Pages - Information about Owls

Owls of the World Information about Owl species Owl Articles Articles & general information Owl Physiology Information on owl physiology & anatomy Owl Sounds Hear Owl calls & sounds

About Owls I Owl Research Institute

Many owl species are nocturnal, meaning they are active at night. There are some owl species who are diurnal, however, meaning they are active during the day but rest at night.

OWL : Gateway : Welcome

Reminder: OWL is unavailable briefly on the last Sunday of the month from 6:00am to 6:30am ET for routine system ...

owl/README_zh.md at main · camel-ai/owl · GitHub

Mar 7, 2025 · OWL CAMEL-AI Framework AI ...

Owl - Wikipedia

Owls are divided into two families: the true (or typical) owl family, Strigidae, and the barn owl and bay owl family, ...

OWL - CAMEL-AI Framework - AI

OWL CAMEL-AI Framework AI ...

Owls, facts and information | National Geographic

All of the roughly 250 owl species live aboveground except for one: the burrowing owl, a small owl found in ...

Learn how to communicate the word "owl in sign language" with our easy-to-follow guide. Discover the signs and enrich your signing skills today!

[Back to Home](#)