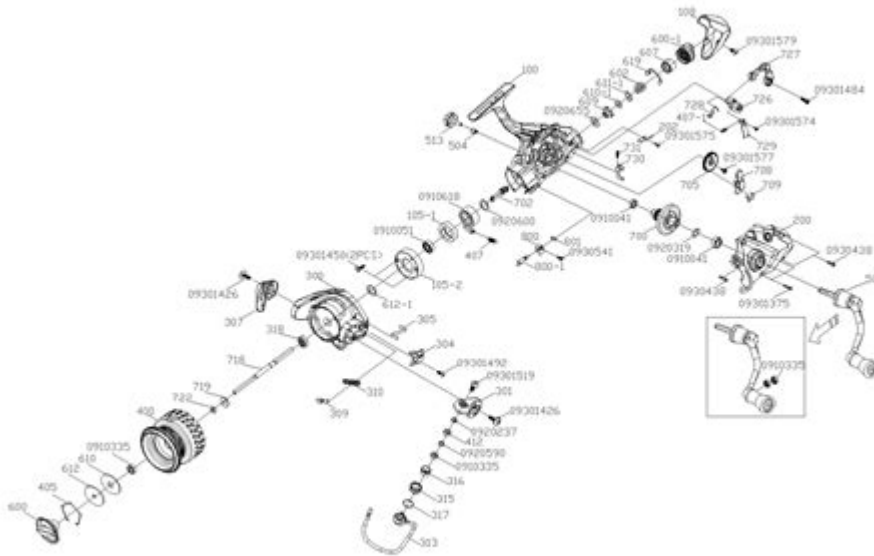


# Okuma Reel Parts Diagram



Okuma reel parts diagram is an essential tool for anglers and enthusiasts who wish to understand the inner workings of their fishing reels. Understanding the various components of an Okuma reel allows for better maintenance, troubleshooting, and ultimately enhances the overall fishing experience. This article will explore the intricate parts of Okuma reels, provide insight into their functions, and guide you on how to interpret a reel parts diagram effectively.

## Understanding Okuma Reels

Okuma Fishing Tackle is a renowned manufacturer of fishing reels and rods. Established in Taiwan, the company has gained a reputation for producing high-quality and innovative fishing gear. Okuma reels are known for their durability, smooth operation, and advanced technology, making them a popular choice among anglers worldwide.

## Types of Okuma Reels

Okuma manufactures several types of fishing reels, each designed for specific fishing styles and conditions. Here are the main types:

1. **Baitcasting Reels:** These reels are designed for casting heavier baits and lures. They offer precision and control, making them ideal for experienced anglers.
2. **Spinning Reels:** Spinning reels are versatile and user-friendly. They are suited for various fishing techniques, from freshwater to saltwater fishing.
3. **Spincast Reels:** These reels are perfect for beginners. They have a closed face and are easy to use,

providing a great introduction to fishing.

4. Conventional Reels: Often used for deep-sea fishing, conventional reels are robust and designed to handle large fish species.

## **Key Components of Okuma Reels**

To appreciate the functionality of Okuma reels, it's essential to familiarize yourself with the individual components. The Okuma reel parts diagram illustrates these components, helping you visualize how they all fit together. Here are the key components:

### **1. Body**

The body is the main structure of the reel that houses all other components. It is designed to be lightweight yet durable, typically made from materials like graphite or aluminum.

### **2. Spool**

The spool is where the fishing line is wound. It plays a critical role in casting and retrieving the line. Spools come in various sizes and designs, affecting how much line can be stored and how smoothly it can be released.

### **3. Drag System**

The drag system allows anglers to adjust the resistance the fish feels when pulling on the line. This is crucial for preventing line breaks and ensuring a successful catch. The drag system typically consists of:

- Drag washers: These create friction to control the drag.
- Drag knob: This is used to adjust the drag tension.

### **4. Handle and Knob**

The handle is what anglers use to retrieve the line, and the knob provides grip and comfort. These components are often ergonomically designed for ease of use.

### **5. Gear System**

The gear system is responsible for the reel's retrieval speed and power. It consists of:

- Main gear: The primary gear that drives the rotation of the spool.
- Pinion gear: Engages with the main gear to facilitate smooth operation.

## **6. Anti-Reverse Mechanism**

This mechanism prevents the handle from turning backward, allowing for immediate hook sets and preventing line slack. It is a crucial feature for effective fishing.

## **7. Bail Assembly**

The bail assembly consists of the bail arm and the roller. The bail arm opens and closes to allow line to be cast or retrieved, while the roller helps manage line tension.

## **8. Line Guide**

The line guide ensures that the line is distributed evenly on the spool during retrieval. It helps prevent tangles and ensures smooth operation.

## **9. Bearings**

Bearings are essential for smooth operation. They reduce friction between moving parts, enhancing the reel's performance. High-quality reels often feature stainless steel or ceramic bearings.

# **Reading the Okuma Reel Parts Diagram**

Understanding how to read an Okuma reel parts diagram is crucial for maintenance and repairs. Here are some key points to consider:

## **1. Identifying Parts**

The diagram will typically label each component clearly. Look for:

- Part numbers: These are essential when ordering replacements.
- Part names: Familiarize yourself with the names to understand their functions better.

## **2. Assembly Instructions**

Many diagrams also provide assembly instructions. Follow these steps carefully when reassembling your reel after maintenance. This typically involves:

- Lining up gears properly
- Ensuring the drag system is correctly installed
- Securing the bail assembly in place

### **3. Troubleshooting Tips**

The parts diagram can help identify potential issues. For example:

- If the reel is not retrieving smoothly, check the gear system and bearings.
- If the drag is not functioning properly, inspect the drag washers for wear.

## **Maintenance Tips for Okuma Reels**

Proper maintenance is crucial for extending the life of your Okuma reel. Here are some tips to keep your reel functioning optimally:

### **1. Regular Cleaning**

After each fishing trip, clean your reel to remove dirt and saltwater. Use a soft cloth and fresh water to wipe down the exterior. For deeper cleaning:

- Disassemble the reel using the parts diagram as a reference.
- Clean each component with a soft brush and a mild detergent.

### **2. Lubrication**

Lubricate the moving parts using reel oil specifically designed for fishing reels. Apply oil to:

- Bearings
- Gears
- Drag system

Be careful not to over-lubricate, as this can attract dirt and debris.

### **3. Regular Inspections**

Periodically check your reel for any signs of wear or damage. Look for:

- Cracks in the body
- Worn drag washers
- Corroded bearings

Addressing these issues promptly can save you from costly repairs down the line.

## **4. Store Properly**

When not in use, store your reel in a cool, dry place. Avoid leaving it exposed to extreme temperatures or humidity. Consider using a protective case to prevent damage.

## **Conclusion**

Understanding the Okuma reel parts diagram is invaluable for any angler looking to maximize the performance of their fishing gear. By knowing the key components and how they function, you can perform better maintenance, troubleshoot issues, and ultimately enjoy your fishing endeavors more fully. Whether you are a novice or an experienced angler, investing time in learning about your reel will pay off in improved performance and reliability. Happy fishing!

## **Frequently Asked Questions**

### **What is an Okuma reel parts diagram used for?**

An Okuma reel parts diagram is used to identify and understand the various components of Okuma fishing reels, helping users with assembly, maintenance, and repairs.

### **Where can I find an Okuma reel parts diagram?**

You can find Okuma reel parts diagrams on the official Okuma website, in product manuals, or through authorized retailers and fishing forums.

### **Are there different parts diagrams for different models of Okuma reels?**

Yes, each model of Okuma reel has its own specific parts diagram, which reflects the unique design and components of that model.

### **How do I read an Okuma reel parts diagram?**

To read an Okuma reel parts diagram, familiarize yourself with the labeled components and numbers, which correspond to the parts list for assembly or repair.

## Can I order specific parts directly from the Okuma reel parts diagram?

Yes, after identifying the needed parts from the Okuma reel parts diagram, you can order them directly from Okuma or authorized dealers.

## What should I do if I can't find the parts diagram for my Okuma reel?

If you can't find the parts diagram for your Okuma reel, consider reaching out to Okuma customer service or checking fishing community forums for assistance.

## Do Okuma reel parts diagrams include exploded views?

Yes, many Okuma reel parts diagrams include exploded views that provide a detailed look at the assembly and arrangement of components.

Find other PDF article:

<https://soc.up.edu.ph/64-frame/files?docid=mgL99-2901&title=vcla-writing-practice-test.pdf>

## Okuma Reel Parts Diagram

### Is there a tag to turn off caching in all browsers?

The list is just examples of different techniques, it's not for direct insertion. If copied, the second would overwrite ...

### regex - Adding ?nocache=1 to every url (including the assets li...

Jul 12, 2016 · But what I would like to do is to apply ?nocache=1 to every URL related to the site (including the assets like ...

### http - What is the difference between no-cache and no-stor...

I don't find get the practical difference between Cache-Control:no-store and Cache-Control:no-cache. As far as I ...

### Why both no-cache and no-store should be used in HTTP respon...

no-store should not be necessary in normal situations, and in some cases can harm speed and usability. It was ...

### when should I use Cache-Control: no-cache? - Stack Overflow

Dec 13, 2012 · When they say "a response" does that mean that everything is caching all the time? See Paul D. Waite's ...

### ☐FARMACOS NACIONALES - Las Empresas México

Sep 16, 2023 · Información completa de FARMACOS NACIONALES: dirección, teléfono, razón social, rfc, empleados, ventas, productos/servicios como productos farmacéuticos y más..

*FARMACOS NACIONALES, - Negocios en MX - COMERCIO MEXICO*

Razón Social o Nombre Comercial: FARMACOS NACIONALES, S.A. DE C.V. El RFC: FNA-951222-DA9. Giro de Negocio: DISTRIBUCION DE MEDICAMENTOS. Los productos y servicios que esta empresa maneja son relativos al area de: DISTRIBUCION DE MEDICAMENTOS.

### **FANASA - Fármacos Nacionales**

Somos una empresa orgullosamente mexicana con mas de 25 años, líder en la comercialización y distribución de medicamentos, insumos y productos para la salud en el mercado nacional.

### **FARMACOS NACIONALES - Marcas - farmacos nacionales ...**

El RFC de FARMACOS NACIONALES es: EMPREMEXICO Recuerda que esta empresa es sinónimo de compra-venta y distribucion de productos farmaceuticos, higienicos, sustancias para uso medico y servicios relacionados con los mismos.

### **☐FARMACOS NACIONALES Cuauhtémoc - Las Empresas México**

Sep 22, 2023 · Información completa de FARMACOS NACIONALES Cuauhtémoc: dirección, teléfono, razón social, rfc, empleados, ventas, domicilios, productos/servicios como farmacia y más..

### **Validador QR - Portal de Trámites y Servicios a Contribuyentes**

Datos de Ubicación (domicilio fiscal, vigente) Características fiscales (vigente)

*Farmacos Nacionales, S.A. De C.V. en Iztapalapa, Ciudad de México*

Toda la información sobre esta empresa se ha obtenido a través de fuentes públicas del gobierno de Iztapalapa, Ciudad de México México.

### **Farmacos Nacionales Sa De Cv - León - Guiamexico.mx**

Farmacos Nacionales Sa De Cv establecimiento registrado desde jul-10 presta los servicios Productos farmacéuticos actualmente cuenta con 101 a 250 personas ubicada en Ciudad Industrial Central De Abastos - León, Guanajuato.

### **Fármacos Nacionales, S.A. de C.V. - Dunsguide**

Datos e informes detallados sobre Fármacos Nacionales, S.A. de C.V. de CIAL Dun & Bradstreet.

### **FARMACOS NACIONALES SA DE CV - BAJADA DE CHAPULTEPEC ...**

FÁRMACOS NACIONALES SA DE CV es una empresa dedicada a Comercio al por mayor de productos farmacéuticos. Se ubica en COLONIA CHAPULTEPEC de Cuernavaca, MORELOS.

Explore our detailed Okuma reel parts diagram to enhance your fishing experience. Learn how to identify and replace parts effectively. Discover more now!

[Back to Home](#)