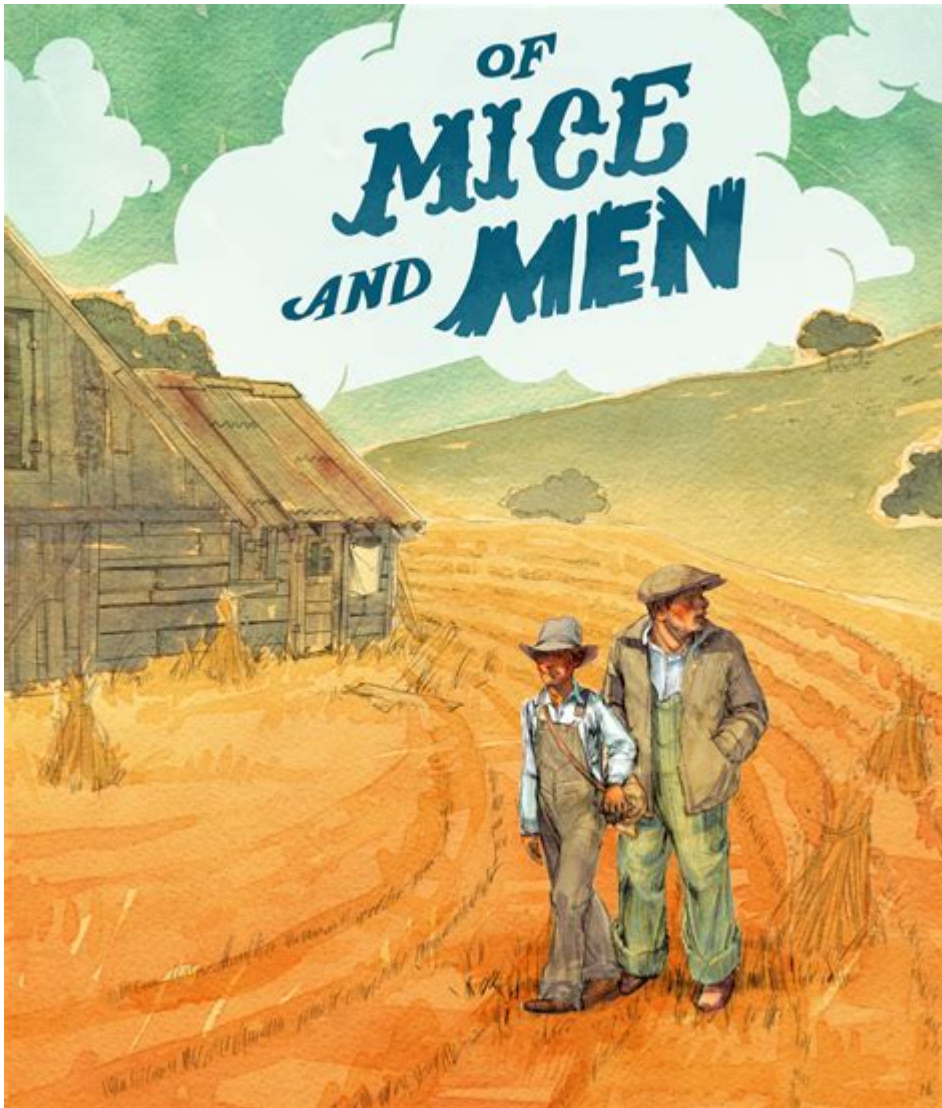


Of Mice And Men A



Of Mice and Men is a novella written by John Steinbeck, first published in 1937. Set against the backdrop of the Great Depression, this poignant story captures the struggles of itinerant workers in California, highlighting themes of friendship, dreams, and the harsh realities of life. Steinbeck's ability to weave complex characters and profound social commentary into a brief narrative has made "Of Mice and Men" a staple of American literature. In this article, we will delve into the key elements of the novella, including its plot, characters, themes, and the historical context that shaped its creation.

Plot Summary

"Of Mice and Men" follows the journey of two displaced ranch workers, George Milton and Lennie Small, as they seek employment and a better life during the economic turmoil of the 1930s. The story opens with the duo arriving at a

ranch in California after fleeing from their previous job in Weed, where Lennie's innocent but problematic behavior led to trouble.

Introduction of Characters

- George Milton: A small, wiry man with sharp features, George is intelligent and quick-witted. He takes on the responsibility of caring for Lennie, his close friend, who has a mental disability.
- Lennie Small: A physically imposing man with a childlike mentality, Lennie is gentle and kind-hearted but often unaware of his own strength. His love for petting soft things leads to unintended consequences.
- Candy: An aging ranch worker who lost his hand in an accident, Candy fears becoming useless and is desperate for companionship.
- Curley: The boss's aggressive son, Curley is confrontational and possesses a chip on his shoulder, often seeking to prove his masculinity.
- Curley's Wife: The only significant female character, she is unnamed and represents the loneliness and isolation of women in a male-dominated world.
- Crooks: The stable hand, Crooks is a black man who faces racial discrimination and longs for social connection and dignity.

Major Events

The plot unfolds as George and Lennie settle into their new life at the ranch. They quickly become acquainted with other workers and share their dream of owning a piece of land. Their aspirations serve as a contrast to the harsh realities they face. However, tensions rise as Curley takes an interest in asserting his dominance over the workers, particularly targeting Lennie.

As the story progresses, Lennie accidentally kills Curley's wife while trying to stroke her hair, an act that sets off a tragic chain of events. George is faced with an agonizing decision, culminating in the novella's heart-wrenching conclusion.

Themes

"Of Mice and Men" is rich with themes that resonate deeply with readers. Steinbeck explores the human condition through various lenses, revealing the complexities of friendship, dreams, and societal issues.

The American Dream

The pursuit of the American Dream is a central theme in the novella. George and Lennie's dream of owning their own farm symbolizes hope and the desire

for independence. However, Steinbeck illustrates how this dream is often unattainable for the working class, highlighting the disillusionment faced by many during the Great Depression.

1. Idealism vs. Reality: Characters such as Candy and Crooks are drawn to the dream but face harsh realities that prevent them from achieving it.
2. Isolation: The novella examines how societal barriers—such as race, gender, and disability—create isolation, making it difficult for individuals to realize their dreams.

Friendship and Loyalty

The bond between George and Lennie is one of the novella's most poignant aspects. Their friendship represents loyalty and companionship in a world marked by solitude and despair.

- Protective Nature of George: George's role as protector illustrates the depth of their relationship, with him often sacrificing his own needs for Lennie's well-being.
- Dependence: Lennie's reliance on George emphasizes the theme of interdependence, highlighting how relationships can provide strength and support.

Loneliness and Isolation

Many characters in "Of Mice and Men" experience profound loneliness, underscoring the human need for connection.

- Curley's Wife: She represents the struggles of women in a patriarchal society, yearning for attention and companionship while being marginalized by the men around her.
- Crooks: His isolation due to racial discrimination reflects the broader societal prejudices of the time, emphasizing the theme of alienation.

The Nature of Dreams

Dreams in "Of Mice and Men" serve as both a source of hope and a reminder of the harsh realities of life.

- Fragility of Dreams: The characters' dreams are depicted as fragile, easily shattered by circumstances beyond their control.
- The Dream of Belonging: For many characters, the dream is not just about material gain but also about belonging and human connection.

Character Analysis

Steinbeck's characters are richly drawn, each representing different facets of society during the Great Depression.

George Milton

George is a complex character whose intelligence and pragmatism often clash with the challenges of caring for Lennie. His deep affection for Lennie reflects the theme of loyalty, even amidst adversity. George's ultimate decision at the end of the novella speaks to the tragic burdens of love and responsibility.

Lennie Small

Lennie embodies both innocence and the potential for destruction. His physical strength juxtaposed with his mental limitations creates a powerful dynamic. Lennie's tragic fate serves as a commentary on society's treatment of those with disabilities, raising questions about compassion and morality.

Candy, Curley, and Curley's Wife

- Candy: Represents the fears of aging and uselessness. His desire to join George and Lennie in their dream underscores the need for companionship.
- Curley: Symbolizes toxic masculinity and the need for power, often projecting his insecurities onto others.
- Curley's Wife: Her lack of identity and desperate need for connection highlight the struggles faced by women during this era.

Historical Context

"Of Mice and Men" is deeply rooted in the socio-economic landscape of the 1930s. The Great Depression drastically altered American society, leading to widespread unemployment and disillusionment.

- Economic Hardship: The plight of itinerant workers like George and Lennie reflects the realities faced by many during this period.
- Social Issues: Racial discrimination, gender inequality, and the struggles of the disabled are prevalent themes, mirroring the systemic issues of the time.

Conclusion

"Of Mice and Men" is more than just a story about two friends; it serves as a profound exploration of the human experience. Steinbeck's ability to capture the dreams, struggles, and relationships of his characters creates a narrative that resonates with readers across generations. The themes of friendship, isolation, and the pursuit of dreams remain relevant today, making "Of Mice and Men" a timeless classic. Through the lens of George and Lennie's journey, Steinbeck invites us to reflect on the complexities of life and the enduring quest for belonging and understanding in an often unforgiving world.

Frequently Asked Questions

What are the main themes explored in 'Of Mice and Men'?

The main themes include friendship, the American Dream, loneliness, and the struggle for personal identity.

Who are the two main characters in 'Of Mice and Men', and what is their relationship?

The two main characters are George Milton and Lennie Small. They are close friends who travel together and support each other in their quest for a better life.

What is the significance of the title 'Of Mice and Men'?

The title refers to a line from Robert Burns' poem about how plans often go awry, underscoring the fragility of dreams and aspirations.

How does Steinbeck portray the theme of loneliness in the novel?

Steinbeck illustrates loneliness through various characters, such as Curley's wife and Crooks, who express their isolation and desire for connection.

What is the American Dream, and how is it represented in 'Of Mice and Men'?

The American Dream in the novel represents the hope for a better life, symbolized by George and Lennie's dream of owning a farm, which ultimately remains unattainable.

What role does nature play in 'Of Mice and Men'?

Nature serves as a backdrop to the characters' struggles and dreams. It reflects their emotions and foreshadows events, particularly in the descriptions of the setting.

How does Steinbeck use foreshadowing in 'Of Mice and Men'?

Foreshadowing is used throughout the novel, notably in the early mention of Lennie's strength and the incident in Weed, hinting at future tragedies.

What is the significance of the character Lennie Small?

Lennie represents innocence and vulnerability. His mental disability leads to tragic misunderstandings, highlighting the harsh realities faced by those who are marginalized.

How is the setting of the novel significant to its themes?

The setting during the Great Depression emphasizes the struggles of the working class, reinforcing themes of hardship, dreams, and the pursuit of happiness.

What message does 'Of Mice and Men' convey about friendship?

The novel emphasizes the importance of companionship and loyalty, illustrating how friendships can provide hope and support in a harsh world.

Find other PDF article:

<https://soc.up.edu.ph/13-note/pdf?docid=sLn57-8375&title=cmos-digital-integrated-circuits-kang.pdf>

Of Mice And Men A

mice **mouse** ☐ ☐ - ☐ ☐

mice[mouse] 1[mice] [maɪs] [maɪs] mouse 2[mouse] [maʊs] [maʊs] n.;[pl] [pl] n.
n.play (a game of) cat and mouse with sb play a cat-and-mouse ...

mouses[mice] -

Mouses mice mice mice - The experiment used 20 mice.

RR R **mice**

"polr" Proportional odds model ms2013 mice 6

mouse **rat** -

Lobund-Wistar rat. From NCI, NIH. Laboratory Mice and Rats
 open-access 276 252 ...

mice *mouse* _

mice *mouse* 1. "mice" "mouse" "mouse" ...

mice -

May 9, 2023 · MICE Meetings, Incentives, Conferences and Exhibitions ...

mice *rat* -

mouse *rat* 'mouse' *mice* 'rat' ...

mouse mice rat -

Nov 1, 2016 · *mice* = “*mouse-s*” *mouse* 10cm “ ” ...

vehicle **mock** **mimic** ...

Dec 8, 2012 · *vehicle* *mock* *mimic* *vehicle* DMSO ...

25 -

Mortality-Inhibiting Environment for Mice “Universe 25” 2200 600 ...

mice *mouse* -

mice *mouse* 1 [mars] [mars] *mouse* 2 [maʊs] [maʊs] n.;; n.play (a game of) cat and mouse with sb play a cat-and-mouse game with sb to play a cruel game with sb in your power by changing your behaviour very often, so that they become nervous and do not know ...

mouses *mice* -

Mouses *mice* *mice* *mouses* - The experiment used 20 mice. 20 - The computer has two mouses connected to it. ...

RR R **mice**

"polr" Proportional odds model ms2013 mice 6

mouse *rat* -

Lobund-Wistar rat. From NCI, NIH. Laboratory Mice and Rats
 open-access 276 252 16 *mouse* 99% ...

mice mouse _

mice mouse 1. - "mice" "mouse" - "mouse" "mice" - The cat caught three mice in the barn. - I saw a mouse ...

mice -

May 9, 2023 · MICE Meetings, Incentives, Conferences and Exhibitions MICE

mice rat -

mouse rat 'mouse' mice 'rat' 'rodent' Rat Mouse ...

mouse mice rat -

Nov 1, 2016 · mice = "mouse-s" mouse 10cm rat 15cm ...

vehicle mock mimic ...

Dec 8, 2012 · vehicle mock mimic vehicle DMSO vehicle DMSO

25 -

Mortality-Inhibiting Environment for Mice "Universe 25" 2200 600

Explore the themes and characters of 'Of Mice and Men a' in our in-depth analysis. Discover how Steinbeck's masterpiece reflects human dreams and struggles. Learn more!

[Back to Home](#)