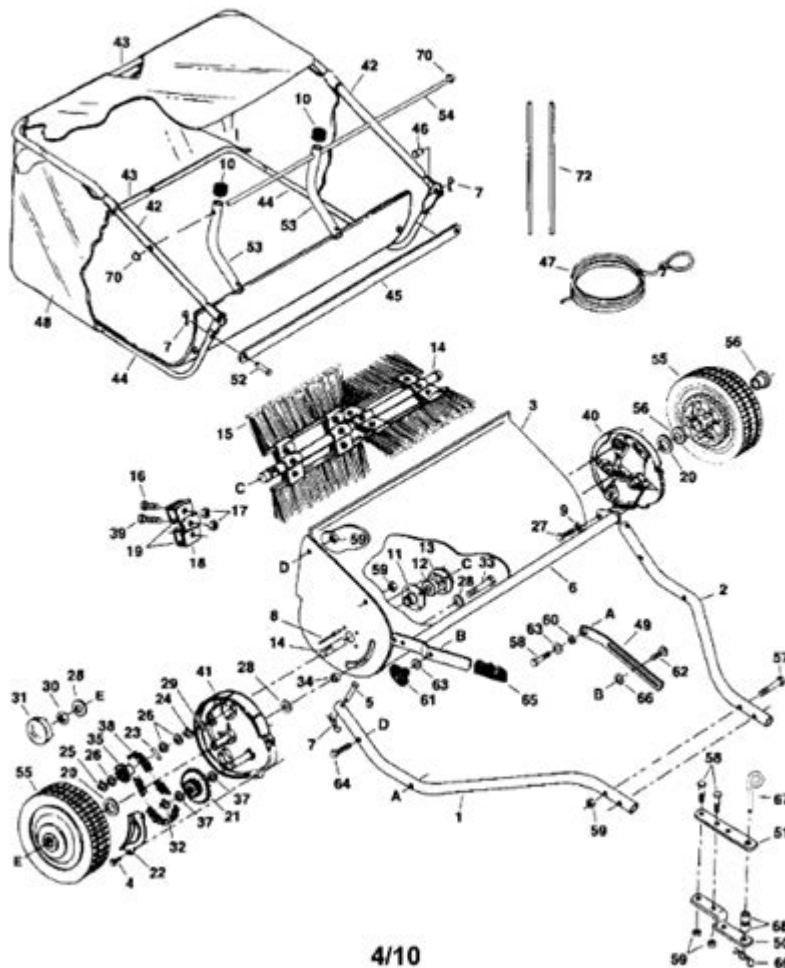


Ohio Steel Lawn Sweeper Parts Diagram



Ohio steel lawn sweeper parts diagram is an essential resource for anyone looking to maintain, repair, or understand the inner workings of their lawn sweeper. Lawn sweepers are invaluable tools for homeowners and landscape professionals alike, helping to collect leaves, grass clippings, and debris efficiently. Understanding the parts of a lawn sweeper, particularly those manufactured by Ohio Steel, can simplify repairs, enable effective maintenance, and extend the lifespan of the equipment. In this article, we will delve into the various components of an Ohio Steel lawn sweeper, their functions, and how to interpret the parts diagram for optimal maintenance and repairs.

Understanding the Ohio Steel Lawn Sweeper

Before we dive into the parts diagram, it is crucial to understand what an Ohio Steel lawn sweeper is and how it operates. Lawn sweepers are designed to collect organic debris from lawns and gardens.

They typically use a rotating brush system to gather materials into a hopper, which can then be emptied easily.

Types of Ohio Steel Lawn Sweepers

Ohio Steel offers a range of lawn sweepers, which can vary in size and features. Some common types include:

1. **Push Lawn Sweepers:** Designed for smaller yards, these models require manual operation but are lightweight and easy to maneuver.
2. **Tow-Behind Sweepers:** These can be attached to riding mowers or lawn tractors, making them suitable for larger areas.
3. **Heavy-Duty Lawn Sweepers:** Ideal for commercial use, these models are built to handle larger volumes of debris and have more robust components.

Components of an Ohio Steel Lawn Sweeper

The parts diagram of an Ohio Steel lawn sweeper typically includes several key components. Understanding each part's function can help you troubleshoot issues and perform maintenance more effectively. Below are the primary components found in most models:

1. Brush System

The brush system is critical for collecting debris. It usually consists of:

- **Rotating Brushes:** These are the main components that sweep debris into the hopper. They can be made from durable synthetic materials designed to withstand wear and tear.
- **Brush Height Adjustment:** This allows users to customize the height of the brushes for different terrains and debris types.

2. Hopper

The hopper is where collected debris is stored. Key features include:

- **Capacity:** The size of the hopper varies by model, affecting how often it needs to be emptied.
- **Dump Mechanism:** Most hoppers come with a mechanism to easily empty the contents without needing to lift the entire unit.

3. Frame and Chassis

The frame provides the structural integrity of the lawn sweeper. Important elements include:

- Material: Typically made from steel or heavy-duty plastic, ensuring durability.
- Wheels: The wheels should be robust and designed for easy maneuverability across various terrains.

4. Tow Hitch (for Tow-Behind Models)

This component allows the sweeper to connect to a lawn tractor. Key considerations are:

- Compatibility: Ensure the hitch is compatible with your lawn tractor.
- Adjustability: Some models offer adjustable hitches for different towing angles.

5. Drive Mechanism

The drive mechanism powers the brush system. It may include:

- Gear System: Transfers power from the wheels to the brushes.
- Belts and Pulleys: These components help to manage the power distribution effectively.

Interpreting the Parts Diagram

An Ohio Steel lawn sweeper parts diagram can be a valuable tool for identifying components. Here's how to read it effectively:

1. Locate the Model Number

Before referencing the diagram, locate the model number of your Ohio Steel lawn sweeper. This information is usually found on the frame or in the user manual. The parts diagram can differ significantly between models.

2. Identify Key Components

Look for labeled sections on the diagram. Parts are often numbered or color-coded for easy identification. Commonly labeled items include:

- Brush Assembly
- Hopper Lid
- Frame Components
- Wheels and Axles

3. Cross-Reference with the Manual

Always cross-reference the parts diagram with your user manual. This will provide additional details on each part's function and maintenance recommendations.

Maintenance Tips for Ohio Steel Lawn Sweepers

To ensure your Ohio Steel lawn sweeper remains in optimal working condition, regular maintenance is essential. Here are some tips:

1. Regular Cleaning

- After each use, clean the brushes and hopper to prevent buildup of debris.
- Use a hose or blower to remove grass clippings and leaves from hard-to-reach areas.

2. Inspect Moving Parts

- Check the brushes for wear and replace them if they show significant signs of damage.
- Inspect belts and pulleys for fraying or misalignment.

3. Lubrication

- Apply lubricant to the moving parts, such as the drive mechanism, to prevent rust and ensure smooth operation.
- Be sure to follow the manufacturer's recommendations for the type of lubricant to use.

4. Seasonal Storage

- Store the lawn sweeper in a dry place during off-seasons to protect it from the elements.
- Cover it with a tarp or a dedicated cover to prevent dust accumulation.

Common Issues and Troubleshooting

Despite regular maintenance, issues may arise. Here are some common problems and their solutions:

1. Brushes Not Rotating

- Cause: This could be due to a broken belt or malfunctioning drive mechanism.
- Solution: Check the belts for wear and replace if necessary. Inspect the gear system for any obstructions.

2. Hopper Not Filling Properly

- Cause: This may occur if the brushes are set too low or too high.
- Solution: Adjust the brush height according to the type of debris being collected.

3. Unstable Operation

- Cause: Uneven weight distribution or worn-out wheels can cause instability.
- Solution: Ensure the hopper is not overloaded and check the wheels for wear.

Conclusion

Understanding the Ohio steel lawn sweeper parts diagram is crucial for anyone looking to maintain their lawn sweeper effectively. By familiarizing yourself with each component and following maintenance best practices, you can ensure that your lawn sweeper operates efficiently for many seasons to come. Regular inspections, cleaning, and adherence to the manufacturer's guidelines will help you avoid common issues and prolong the life of your equipment. Whether you are a weekend warrior tackling your yard or a professional landscaper, a well-maintained lawn sweeper can make a significant difference in the cleanliness and appearance of your outdoor spaces.

Frequently Asked Questions

What is an Ohio steel lawn sweeper parts diagram?

An Ohio steel lawn sweeper parts diagram is a visual representation that shows the various components and parts of an Ohio Steel lawn sweeper, helping users identify and understand the assembly and functionality of the machine.

Where can I find an Ohio steel lawn sweeper parts diagram?

You can typically find an Ohio steel lawn sweeper parts diagram on the manufacturer's official website, in the user manual, or through authorized dealers and parts suppliers.

Why is it important to have a parts diagram for my lawn

sweeper?

Having a parts diagram is important as it allows you to easily identify parts that need replacement, understand the assembly process, and troubleshoot issues effectively.

How do I read an Ohio steel lawn sweeper parts diagram?

To read an Ohio steel lawn sweeper parts diagram, familiarize yourself with the symbols and labels used, follow the flow of assembly, and match the parts with their corresponding numbers or names listed in the parts list.

Can I order replacement parts using the diagram?

Yes, you can use the Ohio steel lawn sweeper parts diagram to identify the specific parts you need and order them from the manufacturer, authorized dealers, or online parts retailers.

What should I do if my diagram is missing or damaged?

If your diagram is missing or damaged, you can usually download a replacement from the Ohio Steel website, contact customer support for assistance, or find a digital version in online forums or repair guide websites.

Are there common issues with Ohio steel lawn sweepers that the diagram can help troubleshoot?

Yes, common issues such as improper assembly, worn-out parts, or malfunctioning components can often be diagnosed using the parts diagram, as it helps you locate and identify the problematic areas.

Is the parts diagram the same for all models of Ohio steel lawn sweepers?

No, the parts diagram can vary by model. It's important to ensure that you have the correct diagram that corresponds to your specific model of Ohio steel lawn sweeper.

Can I use the parts diagram for maintenance purposes?

Absolutely! The parts diagram is a valuable tool for maintenance, as it helps you understand how to disassemble, clean, and reassemble parts, as well as identify parts that may need regular inspection or replacement.

Find other PDF article:

<https://soc.up.edu.ph/59-cover/files?ID=Lkd41-3503&title=the-goal-of-instruction-for-the-behaviorist.pdf>

Ohio Steel Lawn Sweeper Parts Diagram

only in Ohio - Ohio -

"Ohio will be eliminated" Tumblr "Ohio will be eliminated" 107900 ...

QS2023 140 -

Ohio Columbus ...

-

ISBN ...

homie buddy bro -

2. Buddy Buddy Bro Dude Fella Buddy ...

AAAI 2025 -

AAAI 3 AAAI 1 4 4 ...

-

Assistant Professor AP Associate Professor Full Professor Chair Professor

There has been There was ... - HiNative

There h... There was 5 Hnative " " ...

-

985 985 ...

(OSU) -

The Ohio State University " " ...

"Does Ohio mean ?" có nghĩa là gì? - Câu hỏi về Tiếng ...

Định nghĩa Does Ohio mean ? Ohio

only in Ohio - Ohio -

"Ohio will be eliminated" Tumblr "Ohio will be eliminated" 107900 ...

QS2023 140 -

Ohio Columbus ...

-

ISBN ...

homie **buddy** **bro** -

2. Buddy Buddy Bro Dude Fella Buddy ...

AAAI 2025 -

AAAI 3 AAAI 1 4 4 ...

-

Assistant Professor AP Associate Professor Full Professor Chair Professor

There has been **There was** ... - **HiNative**

There h... There was 5 Hinitiative " " ...

-

985 985 ...

(OSU) -

The Ohio State University " " ...

"Does Ohio mean ?" có nghĩa là gì? - Câu hỏi về Tiếng ...

Định nghĩa Does Ohio mean ? Ohio

Explore our comprehensive Ohio steel lawn sweeper parts diagram to help you identify and replace components easily. Learn more for a smoother lawn care experience!

[Back to Home](#)