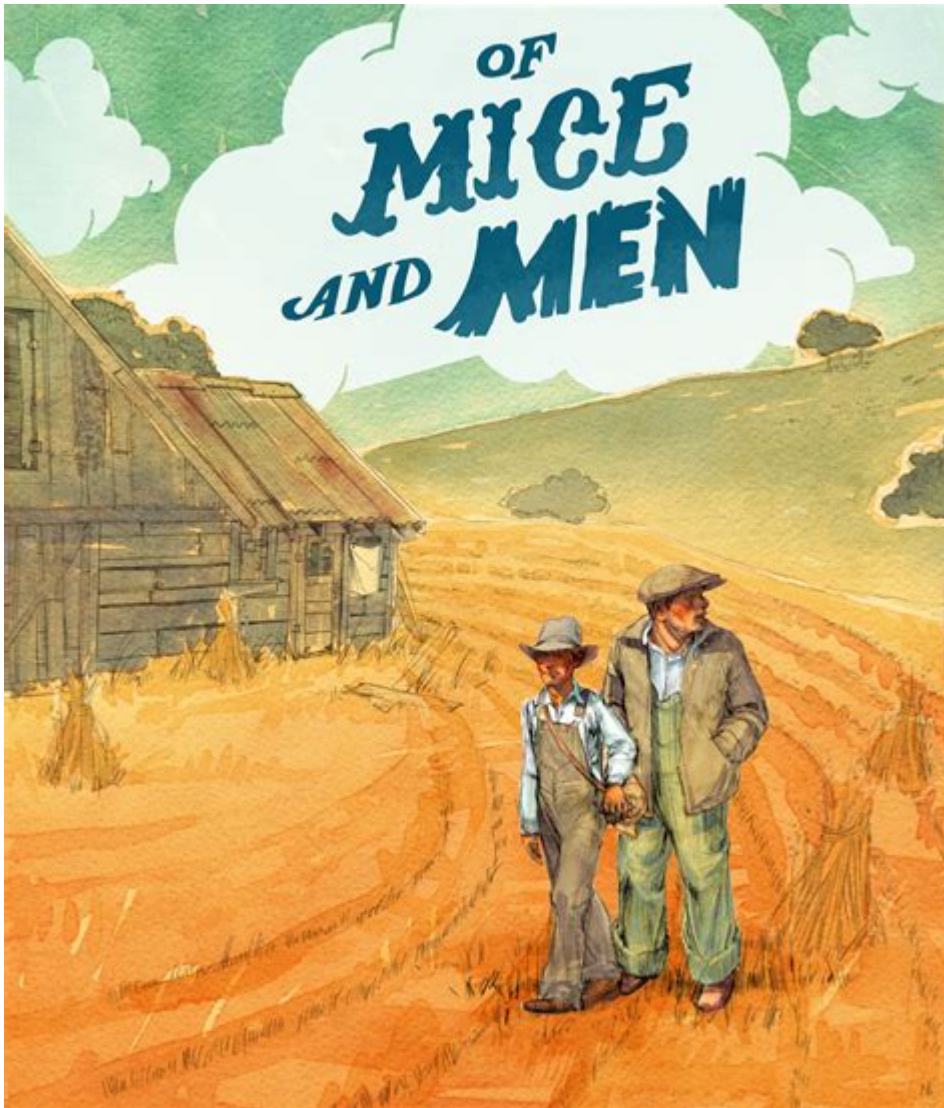


Of Mice And Men Pages



Of Mice and Men pages are crucial to understanding the intricate layers of John Steinbeck's classic novella. Published in 1937, "Of Mice and Men" explores themes of friendship, dreams, loneliness, and the harsh realities of life during the Great Depression. This article will delve into the significance of the pages within the novella, discussing key characters, themes, and the impact of the narrative structure on the overall message of the work.

Overview of "Of Mice and Men"

"Of Mice and Men" centers around two main characters, George Milton and Lennie Small, who are

displaced ranch workers seeking employment in California. Their dream of owning a piece of land symbolizes hope and the pursuit of the American Dream, which starkly contrasts with the challenges they face in a world marked by economic hardship and social isolation.

Key Characters

Understanding the characters is vital for grasping the complexities of the novella. Here's a closer look at the central figures:

1. George Milton:

- A small, wiry man who is Lennie's caretaker and friend.
- Represents the pragmatic side of the American Dream, working tirelessly towards a future that may never come.

2. Lennie Small:

- A large, strong man with a mental disability, whose childlike demeanor contrasts with his physical strength.
- His innocence and inability to comprehend the world around him lead to tragic consequences.

3. Candy:

- An aging ranch worker who fears being useless due to his old age and disability.
- Represents the theme of loneliness and the fear of being cast aside.

4. Curley:

- The boss's son, who is aggressive and seeks to assert his dominance over the workers.
- His character highlights issues of power dynamics and insecurity.

5. Curley's Wife:

- The only female character in the novella, she is often seen as a flirtatious figure but ultimately represents the isolation and unfulfilled dreams of women during that era.

6. Crooks:

- The black stable hand who lives in isolation due to racial segregation.
- His character emphasizes the theme of loneliness and the impact of societal prejudices.

Themes Explored in the Pages

The pages of "Of Mice and Men" are rich with thematic content, each contributing to the overarching narrative. Here are some prominent themes:

The American Dream

The pursuit of the American Dream is a central theme of the novella. George and Lennie's aspiration to own a piece of land reflects the desire for independence and stability. However, the harsh realities they encounter illustrate the fragility of this dream. The contrast between their hopes and the reality of their situation serves as a poignant commentary on the unattainable nature of the American Dream for many during the Great Depression.

Friendship and Loneliness

The relationship between George and Lennie showcases the importance of companionship in a world filled with loneliness. Steinbeck emphasizes that while many characters suffer from isolation, the bond between George and Lennie provides a glimmer of hope. However, their friendship is also fraught with challenges, particularly given Lennie's dependence on George, which highlights the complexities of caregiving and the sacrifices made in the name of friendship.

Power and Disempowerment

Throughout the novella, power dynamics are explored through various characters. Curley's aggressive behavior reflects his need to assert dominance, while characters like Candy and Crooks represent those who are marginalized and disempowered. The way power is wielded and resisted in the pages serves to critique the social hierarchies of the time.

The Structure of the Novella

The structure of "Of Mice and Men" plays a significant role in how the story unfolds. The novella is divided into six distinct sections, each contributing to character development and thematic depth.

Exposition and Setting

The opening pages set the stage for the story, introducing the reader to the characters and their environment. The description of the Salinas River valley establishes a backdrop that is both serene and foreboding, foreshadowing the events that will unfold. This setting serves as a microcosm of the broader struggles faced by individuals during the Great Depression.

Rising Action

As George and Lennie find work on the ranch, the rising action introduces key characters and conflicts. Their interactions with others, particularly Curley and his wife, escalate tensions and reveal the harsh realities of their lives. These pages highlight the various ways in which characters cope with their circumstances, showcasing the theme of survival.

Climax and Falling Action

The climax occurs when Lennie accidentally kills Curley's wife, an act that serves as a turning point in the narrative. This incident not only leads to tragic consequences for Lennie and George but also emphasizes the themes of innocence and the destructive nature of dreams. The falling action follows Lennie's flight and George's heartbreaking decision, underscoring the inevitability of their fate.

Resolution

The resolution of the novella is both poignant and tragic. George's final act of mercy towards Lennie reflects the complexities of their relationship and the harsh realities of their world. The last pages resonate with themes of loss and the fragility of dreams, leaving the reader with a profound sense of melancholy.

Impact and Legacy

The pages of "Of Mice and Men" have left an indelible mark on American literature. Steinbeck's exploration of social issues, coupled with his vivid characterizations and narrative style, has made the novella a staple in educational curricula. The themes of friendship, dreams, and the human condition resonate with readers across generations, prompting discussions about social justice, mental health, and the nature of companionship.

Adaptations and Cultural Significance

Over the years, "Of Mice and Men" has been adapted into various forms, including stage plays and films. These adaptations often highlight the timeless nature of Steinbeck's themes, reinforcing the novella's relevance in contemporary society. The story continues to inspire discussions about the

American Dream and the struggles faced by marginalized individuals.

Conclusion

In conclusion, the pages of "Of Mice and Men" encompass a rich tapestry of themes, character dynamics, and narrative structure that collectively contribute to its lasting impact. Steinbeck's ability to portray the complexities of human relationships against the backdrop of economic hardship remains a powerful reminder of the struggles faced by many. As readers engage with the novella, they are invited to reflect on the nature of dreams, the importance of companionship, and the societal forces that shape our lives. The enduring legacy of "Of Mice and Men" ensures that its pages will continue to resonate with audiences for years to come.

Frequently Asked Questions

What themes are explored in the first few pages of 'Of Mice and Men'?

The first few pages introduce themes of friendship, loneliness, and the American Dream, as we see the bond between George and Lennie and their aspirations for a better life.

How is the setting described in the opening pages of 'Of Mice and Men'?

The opening pages describe a serene natural setting by the Salinas River, highlighting the contrast between the tranquility of nature and the harsh realities of life for itinerant workers.

What is the significance of the characters George and Lennie in the

open-access 276 252 ...

mice **mouse**

```
mice[mouse]
1. mice - "mice"
   mice - "mouse" ...
```

□□□□□□□□ *mice* □□□□□□□□□□□□ - □□

May 9, 2023 · **MICE** Meetings, Incentives, Conferences and Exhibitions ...

□□ *mice* □ *rat* □ □ □ □ □ - □ □ □ □

```
mouse[rat]
mouse[mouse]
mice[rat]
mice[mouse]
...

```

mouse mice rat -

vehicle mock mimic ...

Dec 8, 2012 · vehicle mock mimic vehicle DMSO ...

□□□□25□□□□□□□□□□ - □□

Mortality-Inhibiting Environment for Mice “Universe 25”
2200 600 “ ...

mice *mouse* -

mice[mouse] 1[mice] [mais] [mais] mouse 2[mouse] [maʊs] [maʊs] n.;v.;n. n. play (a game of) cat and mouse with sb play a cat-and-mouse ...

mouses **mice** -

Mouses mice mouse mices - The experiment used 20 mice.

R - *R* mice

"polr" Proportional odds model
 ms2013 mice
 6

mouse rat -

Lobund-Wistar rat. From NCI, NIH. [Laboratory Mice and Rats](#) [open-access](#)[276](#)[252](#) ...

mice □ **mouse** □ □ □ □ □ □ □ □ □ □

```
mice[mouse] 1. mice - "mice"
           - "mouse" ...
```

□□□□□□□□ *mice* □□□□□□□□□□□□ - □□

May 9, 2023 · **MICE** Meetings, Incentives, Conferences and Exhibitions ...

mice **rat** -

