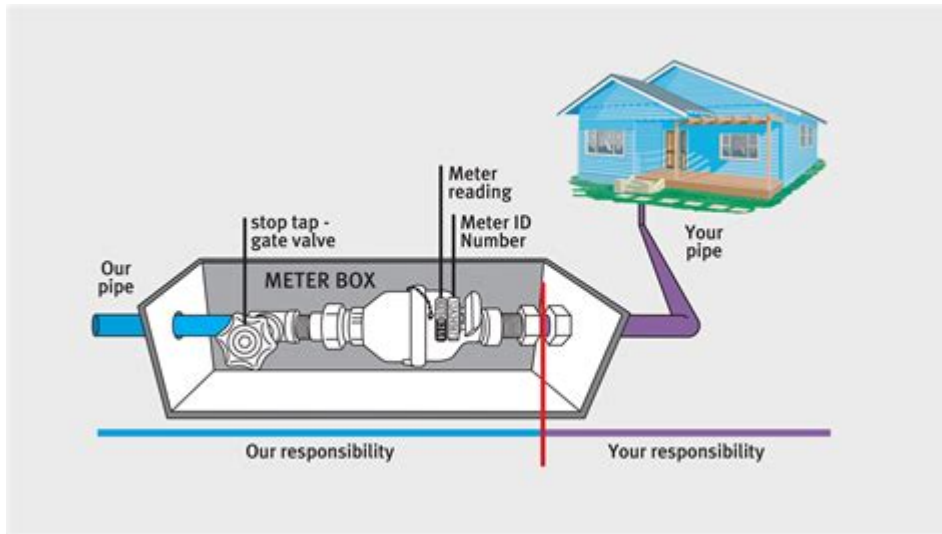


# Nyc Dep Water Meter Installation Diagram



## NYC DEP Water Meter Installation Diagram

Understanding the installation of water meters is crucial for both residential and commercial property owners in New York City. The NYC Department of Environmental Protection (DEP) has specific guidelines and requirements for water meter installation that ensure accuracy in water usage measurement and billing. This article aims to provide a comprehensive overview of the NYC DEP water meter installation diagram, discussing the necessary components, installation process, and important considerations for property owners.

## Components of the Water Meter Installation

Before delving into the installation diagram, it's essential to understand the components involved in a typical water meter setup. The installation typically includes the following parts:

- **Water Meter:** The main device that measures water usage.
- **Meter Pit:** A box or enclosure that houses the water meter, protecting it from environmental factors.
- **Shut-off Valves:** Valves that allow for water flow control during maintenance or emergencies.
- **Backflow Preventer:** A device that prevents contaminated water from flowing back into the clean water supply.
- **Piping:** The pipes that connect the water meter to the main water line.
- **Meter Register:** The display unit that shows the amount of water consumed.

# The Installation Diagram Breakdown

The NYC DEP water meter installation diagram provides a visual representation of how these components fit together. Below is a breakdown of the critical areas depicted in the diagram.

## 1. Meter Location

The water meter should be installed in a location that is easily accessible for reading and maintenance. According to NYC DEP guidelines, the preferred location for the meter is:

- Indoor Installation: Typically found in basements or utility rooms.
- Outdoor Installation: If outdoor, the meter must be protected from freezing temperatures and debris.

## 2. Piping Configuration

The piping configuration is crucial for ensuring accurate water measurement. The diagram illustrates the following:

- Supply Line: The incoming water line that connects to the water meter.
- Discharge Line: The outgoing line that leads to the plumbing system of the property.

A minimum of 18 inches of straight pipe is required before and after the meter to ensure accurate readings.

## 3. Valves and Backflow Preventer

The installation diagram will also highlight the positioning of shut-off valves and backflow preventers:

- Shut-off Valves: Installed on both the supply and discharge lines, allowing for easy isolation of the meter during maintenance.
- Backflow Preventer: This device must be installed upstream of the meter to protect the public water supply from contaminants.

## Steps for Installing a Water Meter

The installation of a water meter should be performed by a licensed plumber familiar with NYC regulations. Below are the general steps involved in the installation process:

1. **Obtain Necessary Permits:** Before starting, you must obtain the appropriate permits from

the NYC DEP.

2. **Prepare the Installation Site:** Ensure that the installation site is clean and accessible.
3. **Shut Off Water Supply:** Turn off the main water supply to prevent flooding during installation.
4. **Install the Meter Pit:** If an outdoor installation is needed, dig a pit that complies with city regulations.
5. **Connect the Water Meter:** Attach the water meter to the supply and discharge lines according to the diagram.
6. **Install Shut-off Valves:** Place the shut-off valves on both sides of the meter for maintenance.
7. **Add the Backflow Preventer:** Ensure the backflow preventer is installed upstream of the meter.
8. **Test the System:** Turn the water supply back on and check for leaks or issues.
9. **Finalize the Installation:** Seal the meter pit and ensure everything is securely in place.

## Important Considerations

When installing a water meter, several important factors must be taken into account:

## Compliance with NYC Regulations

All installations must comply with the regulations set forth by the NYC DEP. This includes adhering to specific requirements for the type of meter used, the materials for piping, and the placement of the meter itself.

## Choosing the Right Meter

NYC DEP provides a variety of water meters, each suited for different applications. Property owners should consult with a plumber or the DEP to determine the most appropriate meter for their needs, considering factors such as:

- Property size
- Expected water usage
- Type of plumbing system

## Regular Maintenance

After installation, regular maintenance is critical to ensure the water meter functions correctly. Property owners should:

- Schedule periodic inspections with a licensed plumber.
- Monitor the meter readings for any inconsistencies.
- Keep the area around the meter clear of obstructions.

## Conclusion

The NYC DEP water meter installation diagram serves as a vital guide for property owners and licensed plumbers alike. Understanding the various components, the installation process, and the regulatory requirements can significantly enhance the efficiency and accuracy of water usage measurement.

By following the necessary steps and considerations outlined in this article, property owners can ensure a successful water meter installation, promoting responsible water usage and compliance with NYC DEP guidelines. For any specific queries or concerns, it is always advisable to contact the NYC DEP or a licensed plumber familiar with local regulations.

## Frequently Asked Questions

### **What is the purpose of the NYC DEP water meter installation diagram?**

The NYC DEP water meter installation diagram provides detailed guidelines and specifications for correctly installing water meters in residential and commercial properties, ensuring compliance with city regulations.

### **Where can I find the official NYC DEP water meter installation diagram?**

The official NYC DEP water meter installation diagram can be found on the New York City Department of Environmental Protection's website under the water meter section or by contacting their customer service.

### **What are the key components shown in the NYC DEP water meter installation diagram?**

Key components typically include the water meter, shut-off valves, piping connections, and any required backflow prevention devices, along with measurements and installation instructions.

## **Do I need a professional to install a water meter according to the NYC DEP diagram?**

While homeowners may attempt to install a water meter themselves using the NYC DEP diagram, it is recommended to hire a licensed plumber to ensure proper installation and compliance with city codes.

## **Are there any specific codes or regulations I should be aware of when following the NYC DEP water meter installation diagram?**

Yes, installers should be aware of the NYC plumbing codes, as well as any specific regulations set forth by the NYC DEP regarding water meter installations to avoid fines and ensure safety.

## **What should I do if I encounter issues during my water meter installation?**

If you encounter issues during installation, you should refer back to the NYC DEP water meter installation diagram for troubleshooting tips, or contact the NYC DEP for assistance or to schedule a professional inspection.

Find other PDF article:

<https://soc.up.edu.ph/41-buzz/Book?dataid=SWu65-5985&title=mobile-pet-grooming-business-plan-sample.pdf>

## **[Nyc Dep Water Meter Installation Diagram](#)**

*The Coalition for NYC Hospitality & Tourism Recovery*

Our new coalition will engage, mobilize and champion all sectors of our visitor economy. Established by NYC & Company, the Coalition will lead and ...

[FAQ - NYCgo.com](#)

How can I see a show during my stay in NYC? If for any reason you cannot purchase your tickets online, please visit any Official NYC Information ...

[Password Reset - NYCgo](#)

Please select the 'Public Computer' option if this is not a machine you use regularly, then enter your User ID below and click 'Submit' to access ...

*The Coalition for NYC Hospitality & Tourism Recove...*

AC Hotel New York Times Square Academy Bus Access New York Metro Accessible Travel NYC Advance Brand Consulting Adventures by Disney AES ...

[Spring 2020 NYC Official Visitor Guide - stage-upgrade.nycgo....](#)

(Tenth–Eleventh Aves.), NYC 10036 Nap York napyork.com A 24/7 wellness club and quiet cafe.

### **The Coalition for NYC Hospitality & Tourism Recovery**

Our new coalition will engage, mobilize and champion all sectors of our visitor economy. Established by NYC & Company, the Coalition will lead and propel economic recovery efforts as we begin to emerge from the Covid-19 pandemic.

#### *FAQ - NYCgo.com*

How can I see a show during my stay in NYC? If for any reason you cannot purchase your tickets online, please visit any Official NYC Information Center during your stay and our staff will help you figure out a way to buy your tickets.

#### Password Reset - NYCgo

Please select the 'Public Computer' option if this is not a machine you use regularly, then enter your User ID below and click 'Submit' to access the system.

### **The Coalition for NYC Hospitality & Tourism Recovery: Members**

AC Hotel New York Times Square Academy Bus Access New York Metro Accessible Travel NYC Advance Brand Consulting Adventures by Disney AES NYC

#### Spring 2020 NYC Official Visitor Guide - stage-upgrade.nycgo.com

(Tenth–Eleventh Aves.), NYC 10036 Nap York napyork.com A 24/7 wellness club and quiet cafe.

#### *Spring 2020 NYC Official Visitor Guide - stage-upgrade.nycgo.com*

Steps from Madison Square Garden and iconic Midtown attractions. Offers spacious and affordable accommodations. 212 736 5000, 800 223 8585 | 401 Seventh Ave. (32nd– 33rd ...

#### *Spring 2020 NYC Official Visitor Guide - stage-upgrade.nycgo.com*

202 NYC & Company | Official Visitor Guide Dining Ruddy & Dean ruddyanddean.com Steakhouse. Great food and service in casual atmosphere. Outdoor seating available with views of Manhattan.

#### **Spring 2020 NYC Official Visitor Guide - stage-upgrade.nycgo.com**

NYC Ferry connects the Bronx, Brooklyn, Manhattan and Queens (plus Governors Island in summer). To get to Staten Island, board the Staten Island Ferry (free) in Lower Manhattan.

#### **Spring 2020 NYC Official Visitor Guide - stage-upgrade.nycgo.com**

Walking distance to Manhattan attractions. Concierge, 24-hour room service. Valet parking. 212 765 1900, 800 237 0990 | 152W. 51st St. (Sixth–Seventh Aves.), NYC 10019 \$\$\$\$ Microtel Inn by Wyndham wyndham hotels.com/hotel/48897 Quick access to ...

#### **Spring 2020 NYC Official Visitor Guide - stage-upgrade.nycgo.com**

(First–Second Aves.), NYC 10003 \$\$\$\$ Southgate Bar & Restaurant southgaterestaurantnyc.com New American. This modern bar/res- taurant/lounge overlooking Central Park, featuring chef Achilles Poliviou’s outstanding modern American cuisine, ...

Explore our comprehensive guide featuring the NYC DEP water meter installation diagram. Learn more about installation steps and tips for a successful setup!

[Back to Home](#)