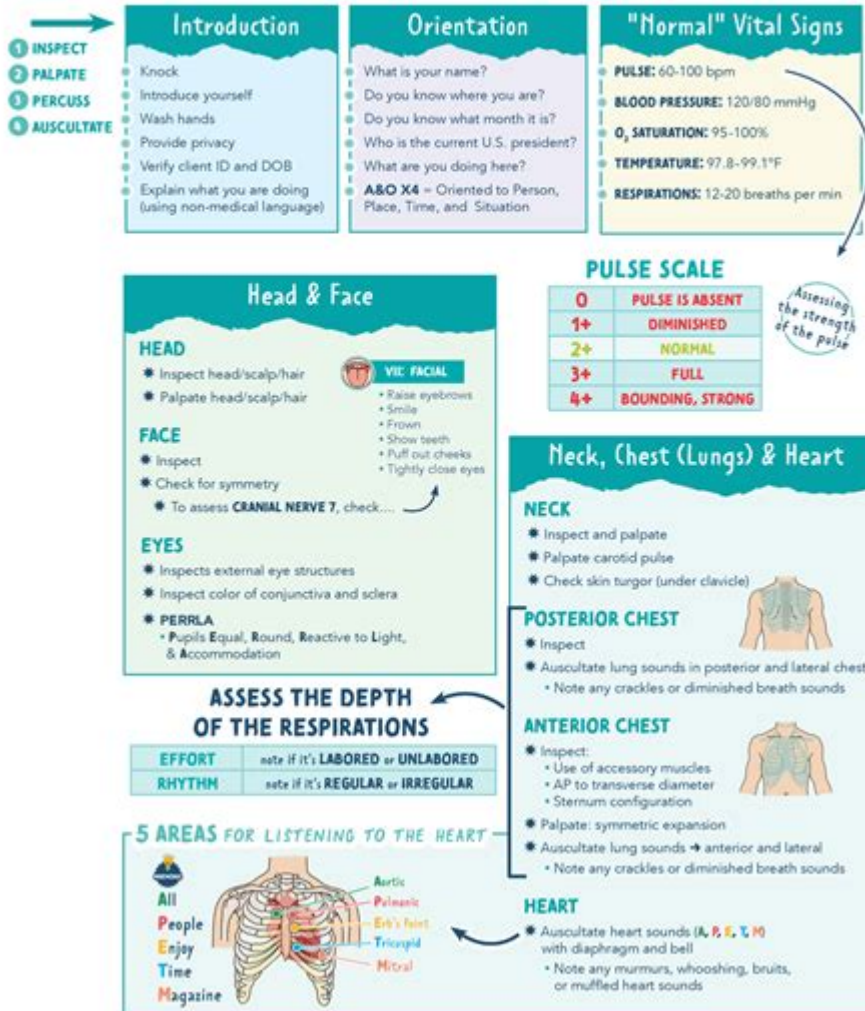


Nurse Head To Toe Assessment

HEAD-TO-TOE ASSESSMENT



© 2021 NurseNerd LLC. Sharing and distributing this copyrighted material without permission is illegal.

6

Nurse head to toe assessment is a critical component of patient care that allows healthcare professionals to gather comprehensive information about a patient's health status. This systematic approach is essential for identifying potential health issues, guiding treatment plans, and ensuring the delivery of high-quality care. A thorough head-to-toe assessment encompasses various aspects of a patient's physical, emotional, and mental health, enabling nurses to develop a holistic understanding of their patients. In this article, we will explore the importance of this assessment, the steps involved, and tips for conducting an effective evaluation.

Importance of Head to Toe Assessment

A nurse's head-to-toe assessment serves several important functions in patient care:

1. **Baseline Data Collection:** It establishes a baseline of the patient's health status, which is crucial for tracking changes over time.
2. **Identification of Health Issues:** By systematically evaluating each body system, nurses can identify existing health problems and potential risks.
3. **Informed Decision-Making:** The information gathered from the assessment aids in formulating nursing diagnoses, planning interventions, and evaluating outcomes.
4. **Patient Engagement:** Engaging patients in their own assessment can enhance their understanding of their health status and promote adherence to treatment plans.
5. **Communication with Healthcare Team:** A thorough assessment provides a clear and comprehensive report that facilitates communication among the healthcare team, ensuring continuity of care.

Steps in Conducting a Head to Toe Assessment

The head-to-toe assessment can be divided into several systematic steps. Nurses should follow these steps to ensure a thorough evaluation.

1. Preparation

Before conducting the assessment, nurses should prepare by:

- **Gathering Supplies:** Ensure you have all necessary equipment, such as a stethoscope, thermometer, blood pressure cuff, penlight, and gloves.
- **Reviewing Patient History:** Familiarize yourself with the patient's medical history, including current medications, allergies, and previous health issues.
- **Creating a Comfortable Environment:** Ensure privacy and comfort for the patient, minimizing distractions to facilitate a focused assessment.

2. Introduction and Rapport Building

Start the assessment by introducing yourself and explaining the procedure to the patient. Building rapport is essential for:

- Easing patient anxiety
- Encouraging open communication
- Gaining the patient's cooperation

3. General Observation

Begin with a general observation of the patient's overall appearance:

- Physical Appearance: Note hygiene, grooming, posture, and any signs of distress.
- Mental Status: Assess alertness, orientation to time/place/person, and mood.
- Mobility: Observe how the patient moves and any difficulties they may experience.

4. Systematic Assessment

Proceed to assess each body system in a systematic manner, typically starting from the head and moving down to the toes.

Head and Neck

- Inspection: Check for symmetry, skin condition, and any abnormalities.
- Palpation: Assess lymph nodes for swelling and tenderness.
- Neurological Assessment: Evaluate cranial nerves (vision, hearing, facial strength).

Chest and Lungs

- Inspection: Observe the respiratory rate, effort, and use of accessory muscles.
- Auscultation: Listen for breath sounds using a stethoscope; identify normal and abnormal sounds (e.g., wheezes, crackles).
- Percussion: Assess lung density and resonance.

Cardiovascular System

- Auscultation: Listen to heart sounds, noting the rhythm and any murmurs.
- Pulse Check: Assess pulse quality and rate at various sites (e.g., radial, carotid).
- Blood Pressure Measurement: Record sitting and standing blood pressure if necessary.

Abdomen

- Inspection: Look for distension, scars, or abnormalities.
- Auscultation: Listen for bowel sounds in all four quadrants.
- Palpation: Assess for tenderness, masses, or organ enlargement.

Musculoskeletal System

- Range of Motion: Evaluate joint movement and any limitations.
- Strength Testing: Assess muscle strength against resistance.
- Gait Assessment: Observe the patient's walking pattern.

Integumentary System (Skin)

- Inspection: Look for color changes, lesions, or rashes.
- Palpation: Assess skin temperature, moisture, and turgor.

Neurological System

- Reflexes: Test deep tendon reflexes.
- Sensation: Evaluate light touch, pain, and proprioception in extremities.

5. Documentation

After completing the assessment, document your findings accurately and thoroughly. Include:

- Subjective Data: Patient's reported symptoms and concerns.
- Objective Data: Observations and measurements collected during the assessment.
- Nursing Diagnoses: Based on the assessment, identify potential nursing diagnoses.

Tips for an Effective Head to Toe Assessment

To enhance the quality and efficiency of the head-to-toe assessment, consider the following tips:

- Use a Standardized Approach: Following a consistent method ensures that no areas are overlooked.
- Engage the Patient: Encourage patients to express their concerns and ask questions during the assessment.

- **Be Systematic:** Move logically through each body system to maintain flow and organization.
- **Practice Active Listening:** Pay attention to the patient's responses and adjust your assessment as needed based on their input.
- **Stay Calm and Professional:** Your demeanor can influence the patient's comfort level; remain composed throughout the assessment.
- **Educate the Patient:** Take the opportunity to explain findings and their implications to promote understanding and involvement in care.

Conclusion

The nurse head to toe assessment is an indispensable tool in nursing practice that enables healthcare providers to gather essential information about a patient's health. By employing a systematic approach to assess each body system, nurses can identify health issues promptly, engage patients in their care, and contribute to the overall efficacy of the healthcare team. Understanding the importance of this assessment, adhering to a structured method, and applying effective communication skills can significantly enhance patient outcomes and satisfaction. As healthcare continues to evolve, the head-to-toe assessment remains a foundational skill that underscores the nursing profession's commitment to comprehensive, patient-centered care.

Frequently Asked Questions

What is a head-to-toe assessment in nursing?

A head-to-toe assessment is a systematic, comprehensive examination of a patient conducted by a nurse, covering all body systems from the head down to the toes to identify any health issues or changes.

Why is a head-to-toe assessment important?

It is important because it provides a baseline of the patient's health status, helps in early detection of potential problems, and guides nursing care plans and interventions.

What are the key components of a head-to-toe assessment?

Key components include inspection, palpation, percussion, and auscultation of each body system, along with assessing vital signs and documenting any findings.

How often should a nurse perform a head-to-toe assessment?

The frequency can vary based on the patient's condition, but it is typically performed upon admission, during every shift, or whenever there is a significant change in the patient's status.

What tools are commonly used during a head-to-toe assessment?

Common tools include a stethoscope, thermometer, sphygmomanometer for blood pressure, penlight, and reflex hammer, among others.

How can nurses ensure a thorough head-to-toe assessment?

Nurses can ensure thoroughness by following a systematic approach, using checklists, and incorporating patient history and current complaints into the assessment process.

What should a nurse do if they find abnormal findings during a head-to-toe assessment?

The nurse should document the findings accurately, report them to the healthcare provider, and collaborate on the next steps for diagnosis and treatment.

What is the role of patient communication during a head-to-toe assessment?

Patient communication is crucial as it helps gather subjective data about symptoms, concerns, and medical history, which complement the objective findings of the assessment.

How does a head-to-toe assessment differ for pediatric vs. adult patients?

For pediatric patients, the assessment may involve more developmental considerations, and techniques may vary to accommodate their age and understanding, while adult assessments focus on physiological aspects.

Find other PDF article:

<https://soc.up.edu.ph/20-pitch/files?dataid=ifM31-7033&title=enrolled-agent-practice-questions.pdf>

[Nurse Head To Toe Assessment](#)

Log Into Facebook

Log into Facebook to start sharing and connecting with your friends, family, and people you know.

Facebook - log in or sign up

Log into Facebook to start sharing and connecting with your friends, family, and people you know.

Facebook - Log in or sign up to view

Facebook is not available on this browser To continue using Facebook, get one of the browsers below. Learn more Chrome Firefox Edge + Meta © 2025

Facebook

Connect and share with friends, family, and communities on Facebook.

Se connecter à Facebook

Connectez-vous à Facebook pour commencer à partager et à communiquer avec vos amis, votre famille et les personnes que vous connaissez.

Log in to Facebook

See posts, photos and more on Facebook.

Log into your Facebook account | Facebook Help Center

How to log into your Facebook account using your email, phone number or username.

Login and Password | Facebook Help Center

Login and Password Find out what to do if you're having trouble logging in, or learn how to log out of Facebook. Login Log into your Facebook account Log out of Facebook Manage logging in ...

Account Recovery | Facebook Help Center

For best results, use a device you've used to log in before. If you're helping someone else, make sure they try these steps on a device they've used to log in before.

Forgot password | Can't log in | Facebook

Log In Messenger Facebook Lite Video Places Games Marketplace Meta Pay Meta Store Meta Quest Ray-Ban Meta Meta AI Instagram Threads Fundraisers Services Voting Information ...

Die 10 Besten Pizzas in Wien - Tripadvisor

Beste Pizza Restaurants in Wien, Region Wien: Tripadvisor Bewertungen von Restaurants in Wien finden und die Suche nach Küche, Preis, Lage und mehr filtern.

Die besten Pizzerias in Wien im Test: 18 Top-Adressen für dich!

Wo gibt es die besten Pizzerias in Wien? Ob klassisch oder hip, neapolitanisch oder vegan - alle Tipps mit Adresse und Karte auf einen Blick.

Amore : Die besten Pizzerien in Wien - FALTER

Jul 14, 2025 · Unsere Redaktion hat für Sie die 10 besten italienischen Restaurants in Wien zusammengestellt. Alle Pizzerien und Italienischen Lokale in Wien finden Sie auch im ...

Pizza Day - Pizza Day Wien Lieferservice - Startseite - Pizza ...

Isst dein Hunger Pizza? Sichere dir jetzt 8% Rabatt bei jeder Bestellung und bestelle bei Pizza Day Wien zu fairen Preisen über [PizzaDay.essimo.io](https://pizzaday.essimo.io). Powered by deinem neuen & ...

Pizza Quartier – Am Karmelitermarkt

Unsere À la Carte Speisekarte bei Pizza Quartier bietet Ihnen eine vielfältige Auswahl an traditionellen italienischen Gerichten, die mit hochwertigen Zutaten und echter Leidenschaft ...

Pizza On Tour

Genießen Sie unsere original italienische Pizza in gemütlichem Ambiente mit ausgezeichnetem Service von unserem erfahrenen und freundlichen Mitarbeiterinnen und Mitarbeitern. Ob ...

Pizza OASE Wien 1210 - Pizza Oase Wien

Wir sind ein familiengeführtes mediterranes Restaurant in 1210 Wien. Von leckerer Pizza, Pasta, Fischgerichten bis Burger gibt es eine große Auswahl an Speisen mit 100% österreichischen ...

Salieri Pizzeria

Pasta, Pizza, täglich frischer Fisch und vieles mehr erwarten Sie in der mit viel Liebe eingerichteten, exklusiven Trattoria Pizzeria (Restaurant) Salieri.

Die 10 besten Pizza in Wien - TheFork

Finde bei TheFork die beste Pizza in Wien. Lies die Restaurantbewertungen unserer Community und reserviere Deinen Tisch noch heute online!

Pizza Mann - der Lieferservice für Pizza und Pasta in Wien, Linz ...

Hast du Lust auf Pizza, Pasta, Burger oder mehr? Als Familienbetrieb leben wir seit über 30 Jahren frische Qualität, laufend neue Speisen und schnelle Zustellung. Probier uns aus und ...

Master the nurse head to toe assessment with our comprehensive guide. Learn essential techniques and improve patient care. Discover how to excel today!

[Back to Home](#)