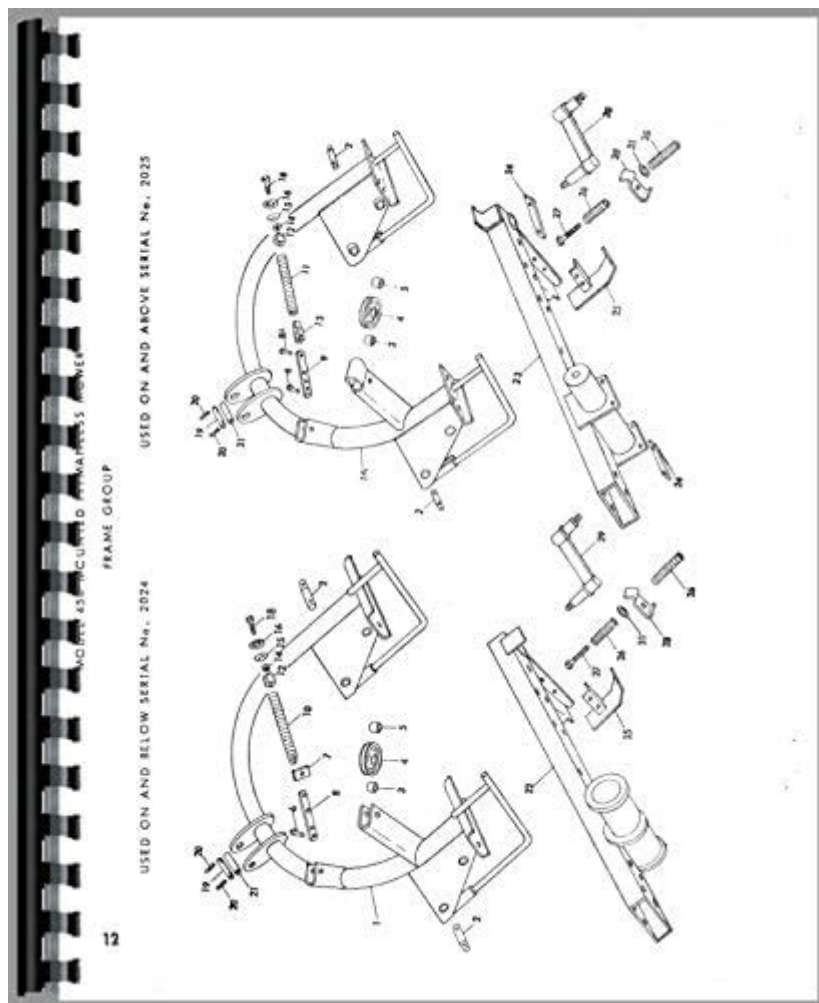


# New Holland 450 Sickle Mower Parts Diagram



New Holland 450 sickle mower parts diagram is an essential resource for farmers and equipment operators who rely on this reliable piece of machinery for cutting hay, grass, and other crops. Understanding the components of the sickle mower and how they work together is crucial for maintenance and repair, ensuring optimal performance during the mowing season. This article will delve into the various parts of the New Holland 450 sickle mower, their functions, and tips for upkeep.

## Overview of the New Holland 450 Sickle Mower

The New Holland 450 sickle mower is a popular choice among farmers due to its efficiency and ease of use. It is designed for durability and offers various features that enhance its performance. This mower utilizes a sickle bar system that allows for smooth and clean cutting of grasses and other crops.

## Key Features

- Design: Compact and lightweight, making it easy to maneuver in various field conditions.
- Sickle Bar: A long bar with sharp blades arranged in a staggered pattern to cut through vegetation effectively.
- Adjustable Cutting Height: Operators can easily adjust the cutting height to suit different types of crops and field conditions.
- Durability: Built with high-quality materials that withstand the rigors of farming work.

## Parts of the New Holland 450 Sickle Mower

Understanding the parts of the New Holland 450 sickle mower is crucial for effective maintenance and operation. Below is a detailed breakdown of the main components.

### Sickle Bar Assembly

The sickle bar assembly is the heart of the mower, responsible for cutting the crops. It consists of several key components:

1. Sickle Blades: Sharp, serrated blades that cut through vegetation.
2. Sickle Sections: These are the individual segments of the sickle blade, which can be replaced when worn.
3. Guard: Protects the sickle blades and helps guide the crop to the cutting edge.
4. Rock Guards: Prevent rocks and other debris from damaging the sickle blades.

### Drive Mechanism

The drive mechanism powers the sickle bar and is essential for its operation. This section includes:

- PTO Shaft: Connects the mower to the tractor's power take-off, transmitting power from the tractor to the mower.
- Gearbox: Reduces the speed of the PTO shaft to a suitable level for the sickle bar operation.
- Drive Belts: These transfer power from the gearbox to the sickle bar, ensuring smooth operation.

### Frame and Mounting Components

The frame supports all the components of the mower and provides stability during operation. Key parts include:

- Mower Frame: The main structure that holds all components together.
- Mounting Bracket: Attaches the mower to the tractor, allowing for easy attachment and detachment.

- Lift Arm: Allows the operator to raise and lower the mower during operation.

## **Adjustments and Control**

Proper adjustments and controls are vital for the mower's performance. Important components in this category include:

- Cutting Height Adjustment: A lever or mechanism that allows the operator to change the height of the sickle bar.
- Angle Adjustment: Some models allow for adjusting the angle of the sickle bar to optimize cutting efficiency.
- Control Levers: Used to engage or disengage the sickle bar, as well as raise or lower the mower.

## **Parts Diagram and Identification**

A New Holland 450 sickle mower parts diagram is an invaluable tool for identifying and locating parts. This diagram typically labels each component, providing a visual reference that helps in maintenance and repairs. Here's how to effectively use a parts diagram:

1. Locate the Diagram: Obtain the official parts diagram from the manufacturer or a trusted parts supplier.
2. Identify Components: Use the diagram to familiarize yourself with the names and locations of various parts.
3. Refer to Part Numbers: Each part is usually assigned a unique number, making it easier to order replacements.
4. Follow the Assembly: Understanding how parts fit together can aid in troubleshooting and reassembly after repairs.

## **Maintenance Tips for the New Holland 450 Sickle Mower**

Regular maintenance is key to the longevity and performance of the New Holland 450 sickle mower. Here are some essential maintenance tips:

### **Routine Inspections**

- Check Sickle Blades: Inspect for wear and replace any damaged or dull blades.
- Examine Drive Belts: Look for signs of fraying or wear, and replace as necessary.
- Inspect the Gearbox: Check for oil levels and leaks, ensuring it is well-lubricated.

## **Cleaning Procedures**

- Debris Removal: After each use, remove any grass, dirt, or debris that may accumulate on the mower.
- Wash the Unit: Periodically wash the frame and components to prevent rust and corrosion.

## **Lubrication Practices**

- Grease Points: Regularly lubricate all moving parts, including the sickle bar pivots and bearings.
- Oil Changes: Follow the manufacturer's recommendations for changing the oil in the gearbox.

## **Common Issues and Troubleshooting**

Even with proper maintenance, issues may arise. Here are some common problems and their solutions:

### **Cutting Performance Issues**

- Dull Blades: If the mower is not cutting effectively, inspect the blades for sharpness and replace them if necessary.
- Improper Cutting Height: Ensure the cutting height is set correctly based on the type of crop being mowed.

### **Drive Mechanism Failures**

- Belt Slippage: Check for belt tension; adjust or replace belts if they are worn or loose.
- Gearbox Problems: Listen for unusual noises from the gearbox, which may indicate a need for inspection or repair.

### **Operational Errors**

- Difficulty Engaging the Mower: Ensure that all control levers are functioning properly and that there are no obstructions.

## **Conclusion**

The New Holland 450 sickle mower parts diagram is an essential resource for anyone who owns or operates this efficient mower. By understanding the various components, maintaining them

properly, and utilizing the parts diagram, operators can ensure peak performance and longevity of their equipment. Regular inspections, cleaning, and lubrication will go a long way in preventing issues and ensuring that the New Holland 450 sickle mower continues to perform effectively season after season.

## **Frequently Asked Questions**

### **What are the main components of the New Holland 450 sickle mower?**

The main components include the cutter bar, sickle blade, drive mechanism, skid shoes, and the mounting frame.

### **Where can I find a parts diagram for the New Holland 450 sickle mower?**

You can find a parts diagram in the operator's manual, through the New Holland official website, or by visiting authorized dealers.

### **How do I identify the specific parts needed for my New Holland 450 sickle mower?**

You can identify the specific parts by consulting the parts diagram, which labels each component, or by providing the serial number to a dealer for assistance.

### **Are there aftermarket parts available for the New Holland 450 sickle mower?**

Yes, there are several aftermarket parts available for the New Holland 450 sickle mower, but it's important to ensure compatibility with your specific model.

### **What maintenance should I perform on the sickle mower components?**

Regular maintenance includes checking and sharpening the sickle blades, lubricating moving parts, inspecting the drive mechanism, and replacing worn components.

### **How can I troubleshoot issues with the sickle mower based on the parts diagram?**

You can troubleshoot by comparing the parts diagram to the physical mower, identifying any damaged or missing components, and systematically testing each part.

### **Is there a difference between the parts for different model**

## years of the New Holland 450 sickle mower?

Yes, there can be differences in parts from different model years, so it's essential to verify the specific parts needed for your model year.

## Can I download the parts diagram for the New Holland 450 sickle mower online?

Yes, many websites offer downloadable parts diagrams, including the New Holland official website and various agricultural machinery forums.

## What tools do I need to replace parts on a New Holland 450 sickle mower?

Common tools include wrenches, socket sets, screwdrivers, pliers, and a grease gun for lubrication.

Find other PDF article:

<https://soc.up.edu.ph/09-draft/pdf?trackid=QLT62-1969&title=black-history-short-stories.pdf>

## New Holland 450 Sickle Mower Parts Diagram

### Create a Gmail account - Google Help

Important: Before you set up a new Gmail account, make sure to sign out of your current Gmail account. Learn how to sign out of Gmail. From your device, go to the Google Account sign in ...

### What is the 'new' keyword in JavaScript? - Stack Overflow

The new keyword in JavaScript can be quite confusing when it is first encountered, as people tend to think that JavaScript is not an object-oriented programming language. What is it? What ...

byrut.rog byrut.rog byrut.rog

May 1, 2025 · byrut.rog byrut.rog byrut.rog

wland -

Sep 6, 2024 · wland Wland 1. \*\*

bigbang \_ ...

Aug 15, 2014 · bigbang BigBang Ye the finally I realize that I'm nothing without you I was so ...

### *How to recover your Google Account or Gmail*

To find your username, follow these steps. You need to know: A phone number or the recovery email address for the account. The full name on your account. Follow the instructions to ...

-

Dec 10, 2024 · 1. Alabama AL2. Alaska AK3. Arizona

AZ4. Arkansas ...

edge,?\_

Nov 22, 2024 · edge,? Edge ...

### Download and install Google Chrome

How to install Chrome Important: Before you download, you can check if Chrome supports your operating system and other system requirements.

### Sign in to Gmail - Computer - Gmail Help - Google Help

Sign in to Gmail Tip: If you sign in to a public computer, make sure to sign out before you leave the computer. Learn how to sign in on a device that's not yours.

### Create a Gmail account - Google Help

Important: Before you set up a new Gmail account, make sure to sign out of your current Gmail account. Learn how to sign out of Gmail. From your device, go to the Google Account sign in ...

### What is the 'new' keyword in JavaScript? - Stack Overflow

The new keyword in JavaScript can be quite confusing when it is first encountered, as people tend to think that JavaScript is not an object-oriented programming language. What is it? What ...

byrut.rog byrut\_

May 1, 2025 · byrut.rog byrut\_

### wland -

Sep 6, 2024 · wlandWland1. \*\*

### bigbang ...

Aug 15, 2014 · bigbang BigBang Ye the finally I realize that I'm nothing without you I was so wrong forgive ...

### How to recover your Google Account or Gmail

To find your username, follow these steps. You need to know: A phone number or the recovery email address for the account. The full name on your account. Follow the instructions to confirm ...

-

Dec 10, 2024 · 1. AlabamaAL2. AlaskaAK3. ArizonaAZ4. Arkansas ...

edge,?\_

Nov 22, 2024 · edge,? Edge ...

### Download and install Google Chrome

How to install Chrome Important: Before you download, you can check if Chrome supports your operating system and other system requirements.

### Sign in to Gmail - Computer - Gmail Help - Google Help

Sign in to Gmail Tip: If you sign in to a public computer, make sure to sign out before you leave the computer. Learn how to sign in on a device that's not yours.

Discover the essential New Holland 450 sickle mower parts diagram to enhance your maintenance and repairs. Learn more about parts and keep your mower running smoothly!

[Back to Home](#)