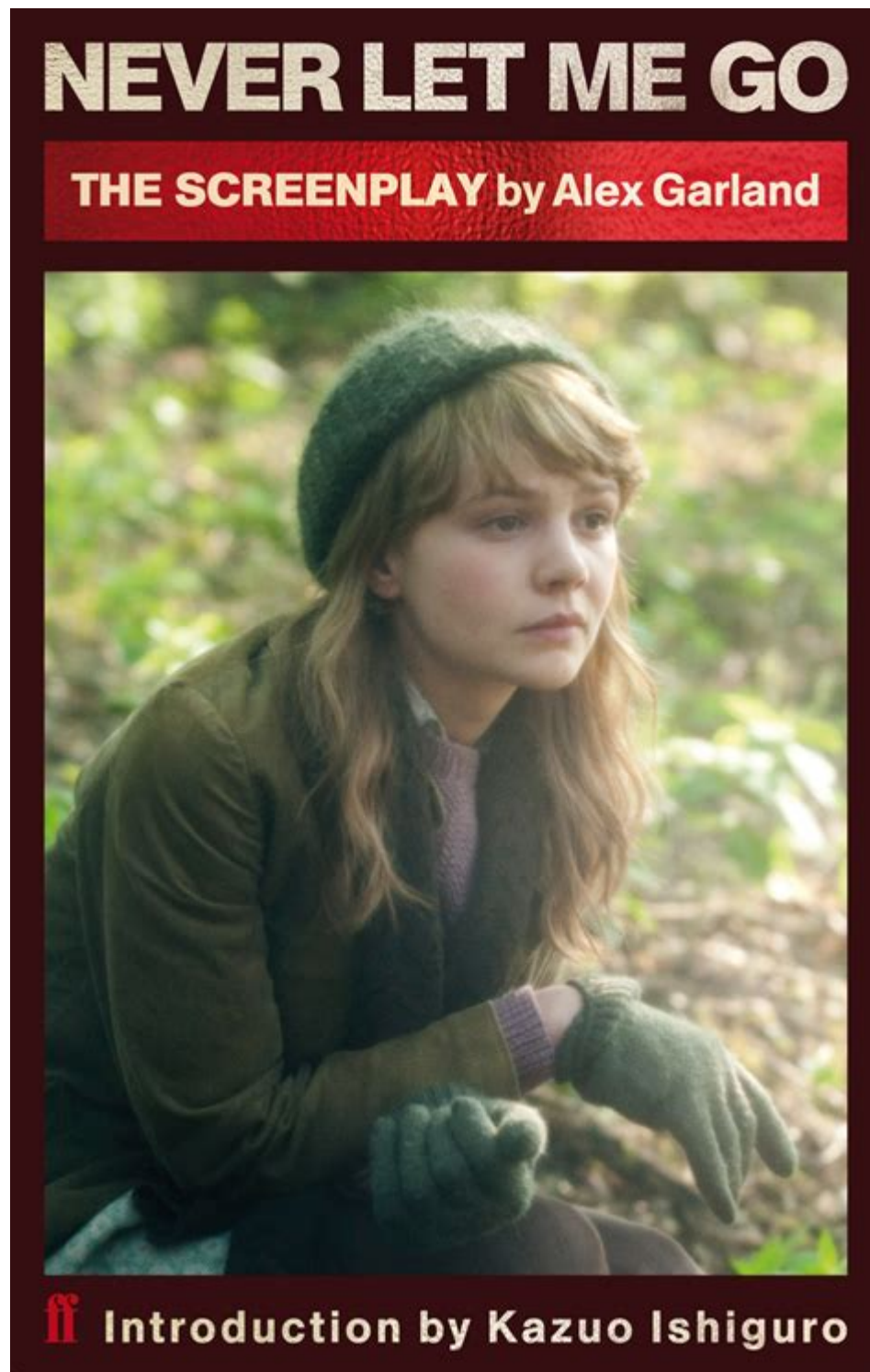


Never Let Me Go Screenplay



Never Let Me Go screenplay is an adaptation of Kazuo Ishiguro's acclaimed novel, which explores profound themes of memory, loss, and the essence of humanity. The screenplay, penned by Alex Garland, captures the haunting narrative and emotional depth of the original text while translating it into a visual medium. The film, directed by Mark Romanek, was released in 2010 and has since garnered critical acclaim for its poignant storytelling and stunning cinematography. In this article, we will delve into the intricacies of the Never Let Me Go screenplay, its thematic elements, character development, and its overall impact on audiences and critics alike.

The Origin of the Screenplay

The Never Let Me Go screenplay is rooted in Kazuo Ishiguro's 2005 novel of the same name. Ishiguro, a Nobel Prize-winning author, is known for his ability to weave complex emotional narratives. The story is set in a dystopian world where human clones are created for the purpose of organ donation. The screenplay adaptation by Alex Garland aims to maintain the novel's essence while making necessary changes for cinematic storytelling.

Key Changes from the Novel

When adapting a novel to a screenplay, certain alterations are often essential. Some significant changes made in the Never Let Me Go screenplay include:

- **Pacing:** The screenplay condenses the timeline of the novel, focusing on key moments that drive the narrative forward.
- **Characterization:** While the novel provides in-depth insights into the characters' thoughts, the screenplay relies on visual cues and dialogue to convey their emotions.
- **Ending Interpretation:** The film's ending, while faithful to the source material, presents a more visual representation of the characters' acceptance of their fate.

These changes help to create a more engaging cinematic experience while preserving the novel's overall themes.

Thematic Exploration

The Never Let Me Go screenplay is rich with themes that resonate deeply with audiences. The primary themes include the nature of humanity, the ethics of cloning, and the concept of love and loss.

The Nature of Humanity

One of the central questions posed in the screenplay is what it means to be human. The characters, who are clones, grapple with their identities and the purpose for which they were created. The screenplay poses important ethical questions about the morality of cloning and organ donation, forcing viewers to confront uncomfortable truths about society's values.

Love and Relationships

The relationships between the main characters—Kathy, Tommy, and Ruth—serve as the emotional core of the story. Their love and envy lead to complex dynamics that reflect the human experience. The screenplay beautifully captures the tension between loyalty and betrayal, showcasing how love can be both a source of strength and pain.

The Acceptance of Fate

A recurring motif in the screenplay is the acceptance of one's fate. The characters understand their predetermined roles in society, and their journey is one of coming to terms with this reality. The screenplay emphasizes the importance of living fully in the face of inevitable loss, an idea that resonates with viewers on a profound level.

Character Development

The characters in the Never Let Me Go screenplay are intricately developed, each representing different aspects of humanity and existential thought.

Kathy H. - The Narrator

Kathy, portrayed by Carey Mulligan, serves as the story's narrator. Her perspective is crucial in guiding the audience through the narrative. The screenplay effectively uses her voice-over to provide insight into her thoughts and feelings, allowing viewers to empathize with her plight.

Tommy - The Emotional Heart

Tommy, played by Andrew Garfield, is depicted as sensitive and passionate. His emotional depth adds layers to the story, and his interactions with Kathy and Ruth highlight the complexities of love and friendship. The screenplay captures his struggles and aspirations, making him a relatable character despite his extraordinary circumstances.

Ruth - The Catalyst

Ruth, portrayed by Keira Knightley, acts as a catalyst in the story. Her character embodies both confidence and vulnerability, driving the narrative's conflict. The screenplay delves into her motivations, showcasing the complexities of her relationship with Kathy and Tommy.

Cinematic Elements

The Never Let Me Go screenplay is complemented by its stunning visual presentation. The film's

cinematography, led by Adam Kimmel, plays a significant role in conveying the emotional weight of the story.

Visual Storytelling

The screenplay is designed to be visually evocative. The use of muted colors and haunting landscapes enhances the dystopian atmosphere, creating a sense of melancholy that resonates with the narrative's themes. Key scenes, such as the revealing of the characters' purpose, are rendered with striking imagery that leaves a lasting impact.

Music and Sound Design

The score, composed by Rachel Portman, further elevates the emotional depth of the screenplay. The music complements the on-screen action, guiding the audience through moments of joy, sorrow, and introspection. The sound design, which incorporates ambient noises and silence, adds to the film's haunting quality.

Critical Reception and Impact

Upon its release, the *Never Let Me Go* screenplay received a mix of critical acclaim and audience appreciation. Critics praised its emotional depth and philosophical themes, though some felt it lacked the novel's intricate nuances.

Awards and Nominations

The film garnered several nominations and awards, including:

- **BAFTA Award:** Nominated for Best Film Music
- **Golden Globe Award:** Nominated for Best Motion Picture – Drama
- **Critics' Choice Movie Awards:** Nominated for Best Adapted Screenplay

These accolades highlight the screenplay's impact on the film industry and its resonance with audiences.

Conclusion

The Never Let Me Go screenplay stands as a testament to the power of storytelling in exploring complex human emotions and ethical dilemmas. Through its rich themes, well-developed characters, and striking visuals, it invites viewers to reflect on what it truly means to live and love. As an adaptation of a literary classic, it succeeds in capturing the essence of Ishiguro's work while providing a unique cinematic experience. Whether you are a fan of the novel or new to the story, the Never Let Me Go screenplay offers a profound exploration of life, loss, and what it means to be human.

Frequently Asked Questions

What are the main themes explored in the 'Never Let Me Go' screenplay?

The screenplay explores themes of memory, identity, and the ethics of cloning, as well as the complexities of love and the human condition in a dystopian setting.

How does the screenplay portray the concept of memory?

Memory is portrayed as a crucial element that shapes the characters' identities and relationships, often serving as a bittersweet reminder of their pasts and lost possibilities.

What role do the characters play in highlighting the moral implications of cloning?

The characters, particularly Kathy, Tommy, and Ruth, embody the emotional and ethical dilemmas of a society that commodifies human life, prompting audiences to reflect on the value of existence and autonomy.

How does the screenplay differ from Kazuo Ishiguro's original novel?

While the screenplay remains largely faithful to the novel's themes and narrative, it condenses certain plot elements and visualizes the emotional depth in a way that enhances the cinematic experience.

What is the significance of the title 'Never Let Me Go'?

The title signifies the yearning for connection and the fear of loss, encapsulating the characters' desires to hold onto their relationships and memories amid their predetermined fates.

In what ways does the screenplay use visual storytelling to enhance its themes?

The screenplay employs visual metaphors and poignant imagery, such as the idyllic yet haunting settings, to underscore the emotional weight of the characters' experiences and the stark contrast between their hopes and realities.

Find other PDF article:

<https://soc.up.edu.ph/07-post/files?dataid=VYJ20-1358&title=asce-7-minimum-design-loads-for-buildings-and-other-structures.pdf>

[Never Let Me Go Screenplay](#)

[GeekPreview: Gen Con 2025 Preview | BoardGameGeek](#)

Gen Con is the largest and longest-running game convention in the U.S., and this preview highlights new games being demoed or sold.

Dice Tower - Top 100 of All Time (2025) - BoardGameGeek

Jan 26, 2025 · Discover the top 100 board games of all time as ranked by Dice Tower in this insightful blog post.

[2025 Dice Tower East Virtual Flea Market - BoardGameGeek](#)

Jul 4, 2025 · 2025 Dice Tower East Virtual Flea Market Bob Gallo @StormbringerGrey Edited Jul 4

Dice Forge | Board Game | BoardGameGeek

Dice Forge is a development game featuring innovative mechanics based on dice with removable faces. In this dice crafting game, players build their own dice. Roll your dice, manage your ...

Dice Throne | Board Game | BoardGameGeek

Dice Throne is a fast-paced 2-6 player combat game, whether 1v1, 2v2, 3v3, 2v2v2, or free-for-all. Select from a variety of heroes that play and feel completely distinct from one another.

[The Dice Tower's ALL TIME Top 100 Games Of All Time \(2025 ...](#)

Jan 31, 2025 · This is a ranking of all of Tom's, Zee's and Mike's games that appeared on their Top 100 games lists for the most years. For further and past analyses (e.g. most loved ...

Burk | Board Game | BoardGameGeek

Players take turn rolling one of their 9 rune stones (dice) and placing it on the board. Grouping runes with the same number multiplies their value for a greater score. But be careful, if an ...

7 Wonders Dice | Board Game | BoardGameGeek

Guide one of the seven largest cities of antiquity to prosperity in 7 Wonders Dice. During the game, you will construct a wonder that defies time, make scientific advances, develop ...

Dice Tower Con East 2025: Boardgame Scheduling and Meetup ...

Jul 7, 2025 · Dice Tower Con 2025 Scheduling & Gamer Meetup List for Boardgames, Wargames, Teaching Games (and other big'uns) July 2 - 6th - Caribe Royale Resort - Buena ...

[Finish Line | Board Game | BoardGameGeek](#)

Finish line is a dice game where players bet on three races. At the beginning of the race, 7 horses are laid out in a starting order. Some horses will be favorites (F) and some are steady runners ...

Youthsaver Account - CommBank

Youthsaver Designed to help teach under 18s how to save, our Youthsaver account offers bonus interest for ...

Commonwealth Bank Youthsaver Account - Finder

Oct 22, 2024 · Designed for under 18s, receive a bonus interest rate for saving regularly. No monthly account fees ...

CommBank Youthsaver Account - Review | Stay or Go

2 days ago · The CommBank Youthsaver high interest savings account offers rates up to 4.55% p.a.

Compare Savings Accounts & Interest Rates - CommBank

Compare our different savings accounts and their interest rates with ease and choose the product the serves your ...

School's (almost) out! Here are 4 savings accounts for young ...

Nov 2, 2023 · For the under 18s, Commonwealth Bank's Youthsaver may be the savings account to consider. ...

Explore the captivating 'Never Let Me Go' screenplay

[Back to Home](#)