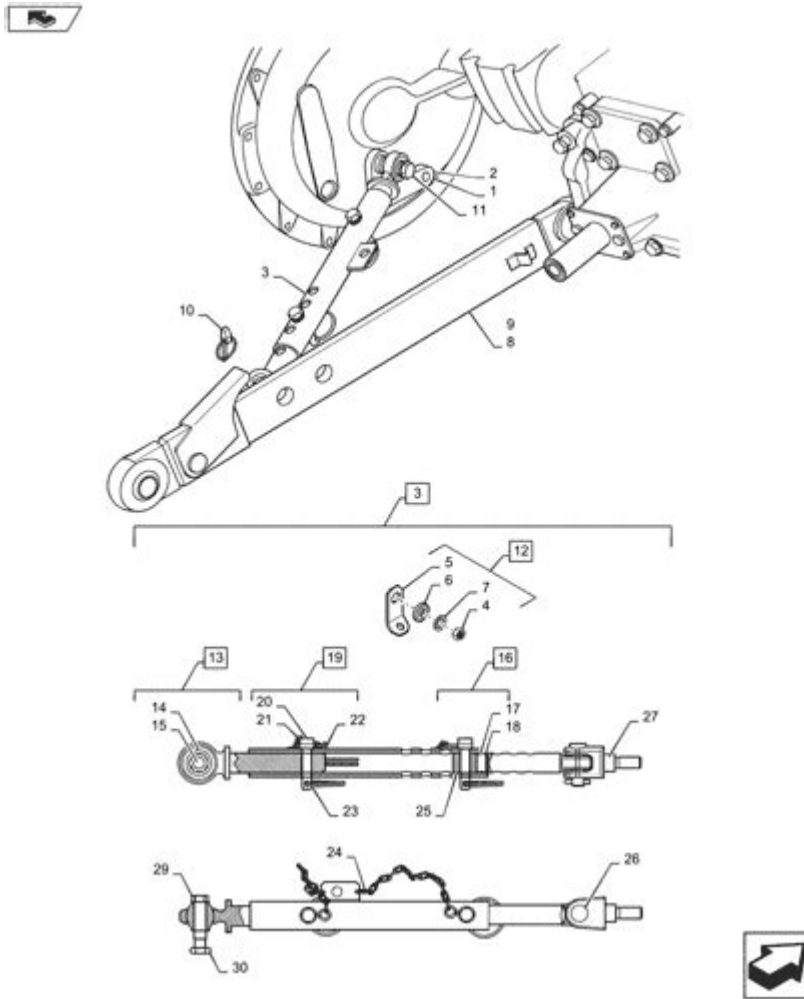


New Holland 3 Point Hitch Parts Diagram



New Holland 3 point hitch parts diagram is an essential resource for anyone working with New Holland tractors. Understanding the various components that make up the 3-point hitch system can greatly enhance your ability to maintain, repair, and operate your machinery effectively. Whether you are a seasoned farmer, a mechanic, or a tractor enthusiast, having a clear visual representation of the parts involved is invaluable. This article will provide a comprehensive overview of the New Holland 3-point hitch parts diagram, the components involved, their functions, and tips for maintenance.

Understanding the 3-Point Hitch System

The 3-point hitch system is a crucial feature in modern tractors, enabling the attachment of various implements and tools. This system allows for quick and efficient coupling and uncoupling of attachments, making it easier to switch between tasks. The 3-point hitch consists of several key components, each serving a specific purpose.

Key Components of the 3-Point Hitch System

1. **Top Link:** This adjustable link connects the implement to the tractor at the top of the hitch. It allows for the adjustment of the implement's angle and position.
2. **Lower Links:** These two arms extend downward from the tractor's rear and connect to the implement. The lower links are typically adjustable in length, providing flexibility for different attachments.
3. **Hitch Pins:** These pins secure the lower links and top link to the implement. They come in various sizes and types, depending on the specific design of the hitch.
4. **Hitch Arms:** These are the physical arms that connect the tractor's frame to the lower links, providing the necessary leverage to lift and lower the attached implement.
5. **Lift Mechanism:** This consists of hydraulic cylinders that raise and lower the 3-point hitch. The hydraulic system allows for smooth and efficient operation.
6. **Control Lever:** Located inside the tractor, this lever controls the lift mechanism, allowing the operator to raise or lower the implement as needed.

Benefits of the 3-Point Hitch System

The 3-point hitch system offers numerous advantages for agricultural operations:

- **Versatility:** It allows for a wide variety of implements, from plows and harrows to seeders and mowers, to be easily attached and detached.
- **Ease of Use:** The design facilitates quick connection and disconnection, saving time during busy workdays.
- **Stability:** The 3-point hitch provides greater stability and control over the implement, enhancing precision in various tasks.
- **Adjustability:** The ability to adjust the top link and lower links allows for proper leveling and angling of the implements, ensuring optimal performance.

Common Issues with 3-Point Hitches

While the 3-point hitch system is designed for durability and efficiency, it is not without its issues. Here are some common problems that may arise:

- **Hydraulic Leaks:** Over time, hydraulic lines and connectors can wear out, leading to leaks that affect the lift mechanism.

- **Wear and Tear:** Constant use can cause wear on hitch pins and bushings, resulting in loose connections and decreased performance.
- **Misalignment:** If the lower links or top link are not properly adjusted, it can lead to difficulties in attaching or operating implements.

Maintenance Tips for 3-Point Hitch Systems

To ensure the longevity and efficiency of your New Holland 3-point hitch system, regular maintenance is essential. Here are some maintenance tips:

1. **Inspect Hydraulic Lines and Connections:** Regularly check for signs of wear, leaks, or damage. Replace any faulty components immediately to prevent issues.
2. **Lubricate Moving Parts:** Use appropriate lubricants on all moving parts, including hitch pins and bushings, to reduce friction and wear.
3. **Check for Loose Connections:** Periodically inspect the hitch for any loose bolts or connections. Tighten any that are found to be loose.
4. **Clean the Hitch Area:** Keep the area around the hitch free from dirt and debris, which can impede the operation of the hitch.
5. **Adjust Links as Needed:** Ensure that the top link and lower links are adjusted correctly for the implements being used. This will ensure proper performance and reduce wear on the hitch components.

Finding a New Holland 3 Point Hitch Parts Diagram

Locating a detailed parts diagram for the New Holland 3-point hitch can significantly aid in maintenance and repair tasks. Here are some effective ways to find these diagrams:

- **Official New Holland Website:** The manufacturer often provides detailed parts diagrams and manuals for their equipment on their official site.
- **Dealer Resources:** Local New Holland dealers typically have access to parts diagrams and can provide them to customers.
- **Online Forums and Communities:** Many tractor enthusiasts share resources, including parts diagrams, in online forums dedicated to New Holland tractors.
- **Repair Manuals:** Purchasing a repair manual specific to your tractor model often includes detailed parts diagrams for the 3-point hitch system.

Conclusion

In summary, understanding the **New Holland 3 point hitch parts diagram** is fundamental for anyone involved in operating or maintaining New Holland tractors. Familiarity with the components, their functions, and maintenance practices can lead to more efficient machinery use and longevity. By taking proactive steps to maintain your 3-point hitch system and utilizing available resources for parts diagrams, you can ensure your tractor performs at its best, season after season. Whether you're plowing fields, mowing grass, or performing any other agricultural task, the reliability of your 3-point hitch system will play a crucial role in your productivity.

Frequently Asked Questions

What is a 3 point hitch in New Holland tractors?

A 3 point hitch is a system used to connect various implements to a tractor, allowing for easy attachment and detachment. It consists of two lower links and an upper link, enabling the implement to be raised, lowered, and angled.

Where can I find a parts diagram for New Holland 3 point hitch?

You can find parts diagrams for New Holland 3 point hitches on the official New Holland website, in the owner's manual for your tractor, or through authorized dealers and online parts suppliers.

What are common parts included in a New Holland 3 point hitch parts diagram?

Common parts include the lower links, top link, lift arms, pins, bushings, and hydraulic cylinders. The diagram provides a visual representation of these components and how they connect.

How do I interpret a New Holland 3 point hitch parts diagram?

To interpret the diagram, identify each component by its label and corresponding part number. The diagram usually shows the relationship between parts, which aids in assembly or replacement.

Can I order replacement parts for my New Holland 3 point hitch online?

Yes, you can order replacement parts for your New Holland 3 point hitch online through authorized New Holland dealers, aftermarket suppliers, or specialized agricultural equipment websites.

What should I do if I can't find the parts diagram for my specific New Holland model?

If you can't find the parts diagram, contact your local New Holland dealer for assistance. They can provide you with the correct diagram and parts for your specific tractor model.

Are there any maintenance tips for New Holland 3 point hitch components?

Yes, regular maintenance includes lubricating moving parts, checking for wear and tear, ensuring proper alignment, and inspecting hydraulic connections for leaks to keep the 3 point hitch in good working condition.

Find other PDF article:

<https://soc.up.edu.ph/07-post/pdf?ID=sFr39-8944&title=applied-behavior-analysis-3rd-edition-ebook.pdf>

New Holland 3 Point Hitch Parts Diagram

Create a Gmail account - Google Help

Important: Before you set up a new Gmail account, make sure to sign out of your current Gmail account. Learn how to sign out of Gmail. From your device, go to the Google Account sign in ...

What is the 'new' keyword in JavaScript? - Stack Overflow

The new keyword in JavaScript can be quite confusing when it is first encountered, as people tend to think that JavaScript is not an object-oriented programming language. What is it? What ...

byrut.roq□□□□ □□□□□□byrut□□□□□□ □□□□

May 1, 2025 · byrut.roq byrut

wland□□□□□□ - □□□□

Sep 6, 2024 · wland Wland 1. ** ...

bigbang□□□□□□□□□□□□□□□□□□ ...

Aug 15, 2014 · bigbang[bigbang] BigBang [bigbang] Ye the finally I realize that I'm nothing without you I was so ...

How to recover your Google Account or Gmail

To find your username, follow these steps. You need to know: A phone number or the recovery email address for the account. The full name on your account. Follow the instructions to ...

<div style="border: 1px solid black; width: 100%; height: 100%; display: flex; align-items: center; justify-content: center;"> □ □ □ □ □ □ □ □ □ □ </div>	-	<div style="border: 1px solid black; width: 100%; height: 100%; display: flex; align-items: center; justify-content: center;"> □ □ □ □ </div>
---	---	---

Dec 10, 2024 · [Alabama](#)AL2. [Alaska](#)AK3. [Arizona](#)

AZ4. Arkansas ...

edge,?_

Nov 22, 2024 · edge,? Edge ...

Download and install Google Chrome

How to install Chrome Important: Before you download, you can check if Chrome supports your operating system and other system requirements.

Sign in to Gmail - Computer - Gmail Help - Google Help

Sign in to Gmail Tip: If you sign in to a public computer, make sure to sign out before you leave the computer. Learn how to sign in on a device that's not yours.

Create a Gmail account - Google Help

Important: Before you set up a new Gmail account, make sure to sign out of your current Gmail account. Learn how to sign out of Gmail. From your device, go to the Google Account sign in ...

What is the 'new' keyword in JavaScript? - Stack Overflow

The new keyword in JavaScript can be quite confusing when it is first encountered, as people tend to think that JavaScript is not an object-oriented programming language. What is it? What ...

byrut.rog byrut_

May 1, 2025 · byrut.rog byrut

wland -

Sep 6, 2024 · wland Wland1. **

bigbang _...

Aug 15, 2014 · bigbang BigBang Ye the finally I realize that I'm nothing without you I was so ...

How to recover your Google Account or Gmail

To find your username, follow these steps. You need to know: A phone number or the recovery email address for the account. The full name on your account. Follow the instructions to ...

-

Dec 10, 2024 · 1. AlabamaAL2. AlaskaAK3. ArizonaAZ4. Arkansas ...

edge,?_

Nov 22, 2024 · edge,? Edge ...

Download and install Google Chrome

How to install Chrome Important: Before you download, you can check if Chrome supports your operating system and other system requirements.

Sign in to Gmail - Computer - Gmail Help - Google Help

Sign in to Gmail Tip: If you sign in to a public computer, make sure to sign out before you leave the computer. Learn how to sign in on a device that's not yours.

Explore our comprehensive guide on the New Holland 3 point hitch parts diagram. Understand each component and enhance your tractor's performance. Learn more!

[Back to Home](#)