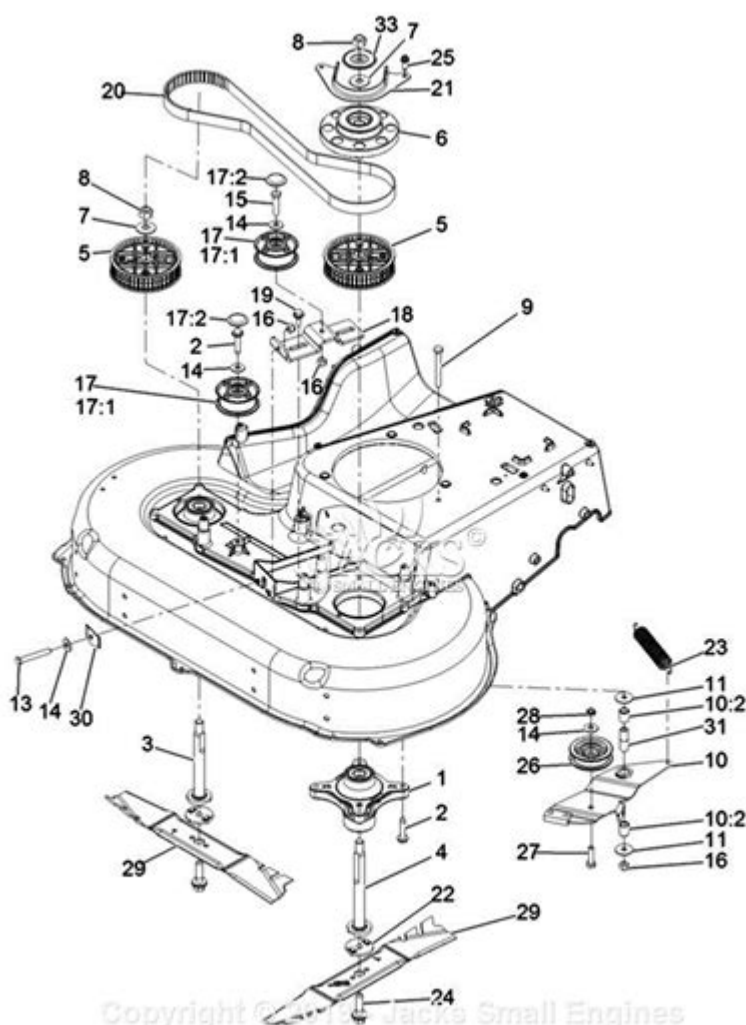


# New Idea 5408 Disc Mower Parts Diagram



**New Idea 5408 Disc Mower Parts Diagram** is an essential tool for anyone involved in the maintenance or repair of this type of agricultural equipment. Understanding the parts of the New Idea 5408 disc mower is crucial for ensuring its optimal function and longevity. This article will explore the components of the disc mower, their functions, and how to effectively utilize a parts diagram to assist with repairs and maintenance.

## Overview of the New Idea 5408 Disc Mower

The New Idea 5408 disc mower is a popular choice among farmers and agricultural professionals for its efficiency and reliability in cutting hay and grass. This machine is designed for durability and ease of use, making it a staple on many farms. It utilizes a series of rotating discs equipped with sharp blades to effectively cut through dense vegetation.

# Key Features of the New Idea 5408 Disc Mower

- Cutting Width: The New Idea 5408 typically features a cutting width of around 8 feet, allowing for quick and efficient mowing of large areas.
- Disc Configuration: The mower is equipped with multiple discs, which help in evenly distributing the cut material and reducing the chances of clogging.
- Adjustable Cutting Height: Operators can adjust the cutting height to suit different types of crops and ground conditions.
- Durability: Built with high-quality materials, the mower is designed to withstand the rigors of agricultural use.

## Understanding the Parts of the New Idea 5408 Disc Mower

To effectively maintain and repair the New Idea 5408 disc mower, it is essential to understand its components. A parts diagram can be immensely helpful in visualizing and identifying each part. Below are some of the key parts of the disc mower:

### Main Components

1. Mower Frame: The structural framework that supports all other components of the mower.
2. Discs: These are the rotating parts that cut the grass or hay. Each disc is equipped with blades that can be replaced as they wear down.
3. Blades: Sharp cutting edges attached to each disc, designed for efficient cutting.
4. Gearbox: Transfers power from the tractor to the mower, facilitating the rotation of the discs.
5. PTO Shaft: Connects the mower to the tractor's power take-off (PTO) system, enabling the mower to operate.
6. Skid Plates: Protect the mower from ground contact and help in maintaining the desired cutting height.
7. Safety Guards: Prevent debris from being thrown from the mower during operation, ensuring operator safety.
8. Bearings: Support the discs and allow for smooth rotation.

### Additional Components

- Hydraulic Cylinder: Used for raising and lowering the mower during operation.
- Hitch Assembly: Connects the mower to the tractor, allowing for easy towing.
- Spindle Assembly: Houses the bearings and connects the discs to the gearbox.
- Drive Chains: Transfer power from the gearbox to the discs.

# Using the Parts Diagram

A parts diagram for the New Idea 5408 disc mower serves as an invaluable resource for both seasoned mechanics and novice operators. Here's how to effectively use it:

## Benefits of a Parts Diagram

- Visual Reference: Provides a clear visual representation of each part, making it easier to identify components during maintenance or repair.
- Part Identification: Helps in accurately identifying parts when ordering replacements, reducing the chances of errors.
- Assembly Guidance: Offers guidance for reassembly after repairs, ensuring that all components are correctly fitted.
- Understanding Functions: Aids in comprehending the function of each part within the overall system.

## How to Read a Parts Diagram

1. Locate the Diagram: Typically found in the owner's manual or service manual for the New Idea 5408.
2. Identify Parts: Each part will be labeled with a part number and description. Familiarize yourself with these labels.
3. Cross-Reference with Manual: Use the parts diagram in conjunction with the service manual for detailed instructions on maintenance and repair procedures.
4. Note Assembly Order: Pay attention to how parts fit together, especially when disassembling and reassembling the mower.

## Common Maintenance Tasks for the New Idea 5408 Disc Mower

Proper maintenance is key to ensuring the New Idea 5408 disc mower operates efficiently. Here are some common tasks that should be performed regularly:

### 1. Blade Inspection and Replacement

- Frequency: Inspect blades after every few hours of use or when they show signs of wear.
- Replacement: Dull or damaged blades should be replaced immediately to ensure clean cuts and reduce strain on the mower.

## 2. Gearbox Maintenance

- Oil Check: Regularly check the oil level in the gearbox and replace it according to the manufacturer's recommendations.
- Seals: Inspect seals for leaks and replace if necessary to prevent oil loss.

## 3. Drive Chain Tension Adjustment

- Tension: Check the tension of the drive chains periodically. Too loose or too tight can cause premature wear.
- Lubrication: Keep chains lubricated to reduce friction and wear.

## 4. Hydraulic System Inspection

- Leaks: Check for hydraulic fluid leaks around the cylinder and hoses.
- Functionality: Ensure the hydraulic system is functioning correctly for raising and lowering the mower.

## 5. Cleaning and Debris Removal

- Post-Operation Cleaning: After mowing, clean the mower to remove grass and debris that can lead to rust and corrosion.
- Storage: Store the mower in a dry place to protect it from the elements.

## Conclusion

The **New Idea 5408 Disc Mower Parts Diagram** is an essential resource for anyone looking to maintain or repair this highly efficient piece of agricultural machinery. Understanding the various parts and their functions, along with the ability to read and utilize a parts diagram, can significantly enhance the longevity and performance of the mower. By staying on top of regular maintenance tasks, operators can ensure that their New Idea 5408 remains in top condition, ready to tackle the demands of hay and grass cutting. Regular inspections, timely replacements, and proper care will keep this vital equipment running smoothly for years to come.

## Frequently Asked Questions

### What is a New Idea 5408 disc mower?

The New Idea 5408 disc mower is a piece of agricultural equipment used for cutting grass and hay, designed for efficiency and durability in various farming operations.

## **Where can I find a parts diagram for the New Idea 5408 disc mower?**

Parts diagrams for the New Idea 5408 disc mower can typically be found in the owner's manual, on the manufacturer's website, or through authorized dealers.

## **Why is a parts diagram important for the New Idea 5408 disc mower?**

A parts diagram is crucial for identifying components, facilitating repairs, and ensuring that replacement parts are correctly installed, enhancing the mower's performance and longevity.

## **What common parts can I expect to find in the New Idea 5408 disc mower parts diagram?**

Common parts include the mower blades, gearboxes, drive shafts, and various bearings and seals, all of which are critical for the mower's operation.

## **Can I purchase replacement parts for the New Idea 5408 disc mower online?**

Yes, replacement parts for the New Idea 5408 disc mower can often be purchased online through agricultural equipment retailers and marketplaces specializing in OEM parts.

## **What should I do if I can't find the parts diagram for my New Idea 5408 disc mower?**

If you can't find the parts diagram, consider contacting New Idea customer service, visiting a local dealer, or checking online forums for agricultural equipment.

## **How often should I consult the parts diagram for maintenance of the New Idea 5408 disc mower?**

It's advisable to consult the parts diagram for maintenance checks at least once a season, or whenever performing repairs or replacing components.

## **Are there any specific tools required to work on the New Idea 5408 disc mower?**

Yes, common tools include wrenches, sockets, screwdrivers, and possibly specialized tools for specific components as outlined in the parts diagram.

## **What are the benefits of using OEM parts for the New Idea 5408 disc mower?**

Using OEM parts ensures compatibility, reliability, and adherence to the manufacturer's specifications, which can enhance the mower's performance and lifespan.

## How can I identify parts from the New Idea 5408 disc mower parts diagram?

Parts can be identified using their part numbers, descriptions, and corresponding visual references in the parts diagram, making it easier to find the correct replacements.

Find other PDF article:

<https://soc.up.edu.ph/65-proof/Book?dataid=HBk42-5055&title=western-civilization-a-brief-history-volume-i-to-1715-jackson-spielvogel.pdf>

## New Idea 5408 Disc Mower Parts Diagram

[Create a Gmail account - Google Help](#)

Important: Before you set up a new Gmail account, make sure to sign out of your current Gmail account. Learn how to sign out of Gmail. From your device, go to the Google Account sign in page. Click Create account. In the drop down, select if the account is ...

## What is the 'new' keyword in JavaScript? - Stack Overflow

The new keyword in JavaScript can be quite confusing when it is first encountered, as people tend to think that JavaScript is not an object-oriented programming language. What is it? What problems ...

byrut.rog byrut

May 1, 2025 · byrut.roq byrut

wland 11111111 - 11111

Sep 6, 2024 · wland Wland 1. \*\*

**bigbang**

Aug 15, 2014 · bigbang  
I realize that I'm nothing without you I was so wrong forgive me ah ah ah ah- [V

## Create a Gmail account - Google Help

Important: Before you set up a new Gmail account, make sure to sign out of your current Gmail account. Learn how to sign out of Gmail. From your device, go to the Google Account sign in ...

## What is the 'new' keyword in JavaScript? - Stack Overflow

The new keyword in JavaScript can be quite confusing when it is first encountered, as people tend to think that JavaScript is not an object-oriented programming language. What is it? What ...

byrut.roq 0000 00000000 byrut 000000 0000

May 1, 2025 · byrut.roqbyrut

wland□□□□□□ - □□□□

Sep 6, 2024 · wland Wland 1. \*\* ...

**bigbang**..... \_ ...

Aug 15, 2014 · bigbang..... BigBang ..... Ye the finally I realize that I'm nothing without you I was so ...

### How to recover your Google Account or Gmail

To find your username, follow these steps. You need to know: A phone number or the recovery email address for the account. The full name on your account. Follow the instructions to ...

..... - .....

Dec 10, 2024 · .....1. ....Alabama.....AL2. ....Alaska.....AK3. ....Arizona.....AZ4. ....Arkansas..... ...

**edge**.....,.....?\_.....

Nov 22, 2024 · edge.....,.....? Edge ..... .....

### Download and install Google Chrome

How to install Chrome Important: Before you download, you can check if Chrome supports your operating system and other system requirements.

### **Sign in to Gmail - Computer - Gmail Help - Google Help**

Sign in to Gmail Tip: If you sign in to a public computer, make sure to sign out before you leave the computer. Learn how to sign in on a device that's not yours.

Explore our comprehensive guide on the New Idea 5408 disc mower parts diagram. Find detailed insights and diagrams to optimize your mower's performance. Learn more!

[Back to Home](#)