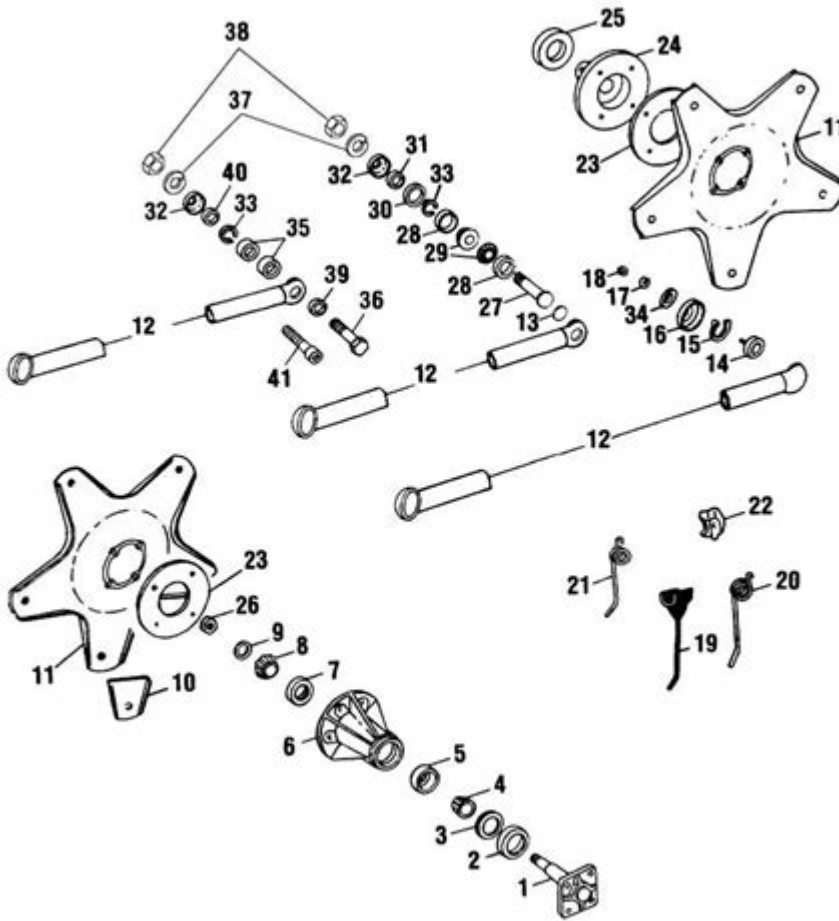


New Holland 256 Rake Parts Diagram



New Holland 256 rake parts diagram is an essential tool for farmers and equipment operators looking to maintain or repair their hay rakes effectively. Understanding the components of the New Holland 256 rake is crucial for ensuring optimal performance and longevity of the machine. This article delves into the various parts of the New Holland 256 rake, how to interpret its parts diagram, and tips for maintenance and repair.

Overview of New Holland 256 Rake

The New Holland 256 rake is a vital piece of equipment for farmers engaged in hay production. Designed for efficiency and durability, it is capable of handling a variety of crops, such as grass and legumes. The rake gathers and forms windrows, making it easier for subsequent processes like baling.

Key Features of the New Holland 256 Rake

- High Capacity: The rake can handle large volumes of material, making it suitable for large-scale operations.
- Adjustable Raking Height: Operators can adjust the height of the rake to accommodate different crop types and field conditions.
- Durability: Built with high-quality materials, the New Holland 256 rake is designed to withstand heavy use in various agricultural conditions.

Understanding the Parts Diagram

A parts diagram is a visual representation that breaks down the different components of the New Holland 256 rake. This diagram is invaluable for identifying parts that may need maintenance or replacement.

Components of the Parts Diagram

1. Frame: The main structure that holds all other components together.
2. Rake Wheels: These are the wheels that rotate and gather the crop material.
3. Tines: The metal fingers that collect the hay and form it into windrows.
4. Drive System: Includes gears and shafts that transfer power from the tractor to the rake.
5. Lift Mechanism: Allows the operator to lift the rake for transport or to raise it when not in use.
6. Hitch: The coupling device that connects the rake to the tractor.

How to Read the Parts Diagram

- Labels: Each part is labeled with a corresponding number or letter.
- Legend: Most diagrams include a legend that provides additional information about each part.
- Exploded View: Often, parts diagrams will show an exploded view, making it easier to understand how components fit together.

Common Parts of the New Holland 256 Rake

Understanding the common parts of the New Holland 256 rake will help in identifying issues and facilitating repairs.

1. Rake Wheel Assembly

The rake wheel assembly is crucial for the operation of the rake. It consists of:

- Wheel Hub: The center part that connects to the axle.
- Tine Bars: The rods that hold the tines in place.
- Tines: Replaceable parts that gather the hay.

2. Drive Components

The drive components are responsible for transferring power from the tractor to the rake. Key parts include:

- Sprockets: Connect the drive chain to the wheel assembly.
- Chains: Transfer power from the tractor to the rake wheels.
- Gearbox: Adjusts the speed and torque of the rake.

3. Hydraulic System

The hydraulic system controls the lift and lower functions of the rake. It consists of:

- Hydraulic Cylinders: Used to lift and lower the rake.
- Hoses: Connect the cylinders to the tractor's hydraulic system.
- Control Valves: Regulate the flow of hydraulic fluid.

Maintenance Tips for the New Holland 256 Rake

Regular maintenance is essential for keeping the New Holland 256 rake in good condition. Here are some tips:

1. Regular Inspections

- Check for signs of wear and tear on tines and wheels.
- Inspect hydraulic hoses for leaks or damage.
- Ensure that all bolts and fasteners are tightened properly.

2. Lubrication

- Apply grease to moving parts as recommended by the manufacturer.
- Lubricate the drive components to minimize friction and wear.

3. Cleaning

- After each use, clean the rake to remove debris and dirt.
- Pay special attention to the tines and wheel assembly.

4. Seasonal Maintenance

- Before the start of the hay season, perform a thorough inspection and maintenance check.
- Replace any worn or damaged parts as needed.

Where to Find Replacement Parts

Finding the right replacement parts for the New Holland 256 rake is crucial for ensuring its functionality. Here are some options:

1. Authorized Dealers

- Visit an authorized New Holland dealer for genuine parts that guarantee compatibility and quality.

2. Online Retailers

- Numerous online platforms specialize in agricultural equipment parts. Ensure you verify the part numbers before purchasing.

3. Salvage Yards

- Consider visiting local salvage yards that may have used parts available at a reduced cost.

Conclusion

Understanding the New Holland 256 rake parts diagram is crucial for any

operator or farmer looking to maintain their equipment effectively. This article has provided a comprehensive overview of the rake's components, how to read the parts diagram, and essential maintenance tips. Regular inspections and timely replacements can significantly extend the life of the rake, ensuring that it continues to perform efficiently in the field. By knowing where to find replacement parts and how to care for your equipment, you can keep your New Holland 256 rake in prime condition, ready for whatever production challenges you face.

Frequently Asked Questions

What is the purpose of the New Holland 256 rake parts diagram?

The New Holland 256 rake parts diagram provides a visual representation of the rake's components, helping users understand the assembly and maintenance of the machine.

Where can I find a detailed parts diagram for the New Holland 256 rake?

You can find a detailed parts diagram for the New Holland 256 rake on the official New Holland website, in the operator's manual, or through authorized dealers and parts suppliers.

How do I use the parts diagram for troubleshooting my New Holland 256 rake?

To troubleshoot your New Holland 256 rake using the parts diagram, identify the component you suspect is malfunctioning, locate it on the diagram, and check for any visible damage or wear against the parts list.

Are there alternative sources for New Holland 256 rake parts if the diagram is not clear?

Yes, if the diagram is not clear, you can consult aftermarket parts suppliers, online forums, or user groups dedicated to New Holland equipment for additional resources and advice.

Can I get a digital version of the New Holland 256 rake parts diagram?

Yes, many websites and online forums offer digital versions of the New Holland 256 rake parts diagram, which can often be downloaded or viewed online for easy access during repairs.

Find other PDF article:

<https://soc.up.edu.ph/50-draft/files?docid=xWW17-5190&title=relational-life-therapy-terry-real.pdf>

[New Holland 256 Rake Parts Diagram](#)

Create a Gmail account - Google Help

Important: Before you set up a new Gmail account, make sure to sign out of your current Gmail account. Learn how to sign out of Gmail. From your device, go to the ...

What is the 'new' keyword in JavaScript? - Stack Overflow

The new keyword in JavaScript can be quite confusing when it is first encountered, as people tend to think that JavaScript is not an object-oriented programming language. ...

[byrut.rog](#) [byrut](#) [byrut](#)

May 1, 2025 · [byrut.rog](#) [byrut](#)

[wland](#) - [wland](#)

Sep 6, 2024 · [wland](#) [Wland](#)1. ****** [wland](#) ...

[bigbang](#) ...

Aug 15, 2014 · [bigbang](#) [BigBang](#) [Ye](#) the finally I realize that I'm nothing without you I was ...

Create a Gmail account - Google Help

Important: Before you set up a new Gmail account, make sure to sign out of your current Gmail account. Learn how to sign out of Gmail. From your device, go to the Google Account sign in page. Click Create account. In the drop down, select if the account is for your: Personal use Child Work or business To set up your account, follow the steps on the screen.

[What is the 'new' keyword in JavaScript? - Stack Overflow](#)

The new keyword in JavaScript can be quite confusing when it is first encountered, as people tend to think that JavaScript is not an object-oriented programming language. What is it? What problems ...

[byrut.rog](#) [byrut](#) [byrut](#)

May 1, 2025 · [byrut.rog](#) [byrut](#)

[wland](#) - [wland](#)

Sep 6, 2024 · [wland](#) [Wland](#)1. ****** [wland](#) ...

[bigbang](#) ...

Aug 15, 2014 · [bigbang](#) [BigBang](#) [Ye](#) the finally I realize that I'm nothing without you I was so wrong forgive me ah ah ah ah- [V

How to recover your Google Account or Gmail

To find your username, follow these steps. You need to know: A phone number or the recovery email address for the account. The full name on your account. Follow the instructions to confirm it's your account. You'll find a list of usernames that match your account.

Alabama - AK

Dec 10, 2024 · 1. AlabamaAL2. AlaskaAK3. ArizonaAZ4. ArkansasAR5. CaliforniaCA6.

edge,?_

Nov 22, 2024 · edge,? Edge

Download and install Google Chrome

How to install Chrome Important: Before you download, you can check if Chrome supports your operating system and other system requirements.

Sign in to Gmail - Computer - Gmail Help - Google Help

Sign in to Gmail Tip: If you sign in to a public computer, make sure to sign out before you leave the computer. Learn how to sign in on a device that's not yours.

Explore our comprehensive guide on New Holland 256 rake parts diagram. Find detailed visuals and information to help you identify and order the right parts. Learn more!

[Back to Home](#)