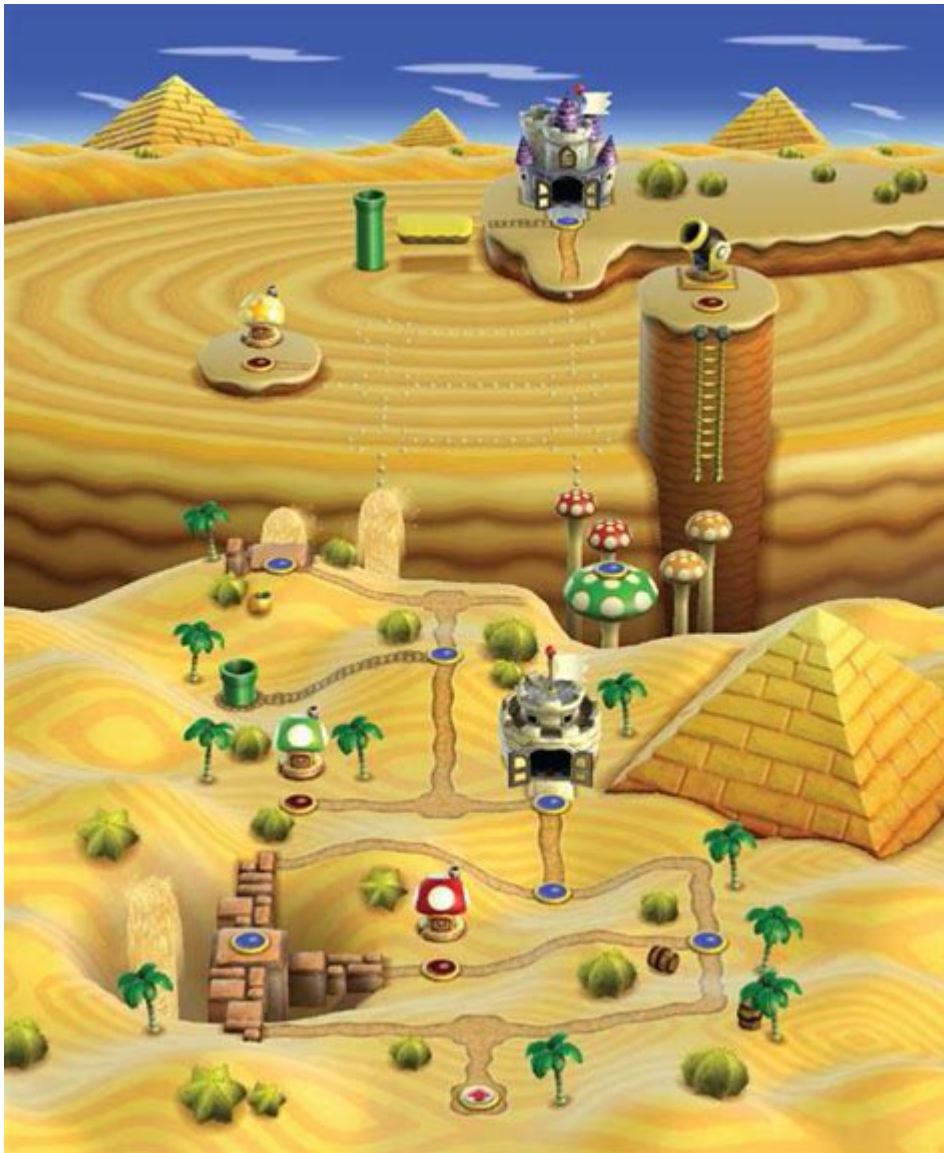


# New Super Mario Bros Wii Maps



New Super Mario Bros Wii maps offer a delightful blend of nostalgia and innovation, reinvigorating the classic Mario gameplay while providing fresh experiences for both new and veteran players. Released in 2009, this installment for the Wii console has captivated audiences with its vibrant worlds, engaging level designs, and the introduction of multiplayer gameplay. This article will explore the various maps featured in New Super Mario Bros Wii, detailing their themes, challenges, and unique features that make them stand out in the larger Mario franchise.

## Thematic Overview of New Super Mario Bros Wii Maps

New Super Mario Bros Wii features a variety of thematic worlds, each with its

own distinct aesthetic and gameplay mechanics. The game is structured into eight primary worlds, each containing numerous levels, secret exits, and unique challenges. The overall design of these worlds plays a crucial role in delivering a cohesive gaming experience.

## **World 1: Acorn Plains**

- Theme: This world is characterized by lush greenery and traditional Mario aesthetics, reminiscent of the classic Super Mario Bros.
- Levels:
  - 1-1: A straightforward introduction to the game's mechanics, featuring standard platforming elements.
  - 1-2: Introduces underground areas with hidden secrets and power-ups.
  - 1-3: A castle level that culminates in a boss fight against a Koopa.
- Unique Features: The introduction of the Propeller Mushroom, allowing players to fly and navigate levels more easily.

## **World 2: Desert Hills**

- Theme: A vibrant desert setting filled with sand dunes, cacti, and pyramids.
- Levels:
  - 2-1: Features moving platforms and quicksand traps.
  - 2-2: An underground level that introduces the concept of sand as a gameplay element.
  - 2-3: A challenging level with various enemies and a hidden exit.
- Unique Features: The introduction of the Ice Flower, enabling players to freeze enemies and create platforms from frozen foes.

## **World 3: Ocean Beach**

- Theme: An aquatic world with beaches, underwater levels, and vibrant sea life.
- Levels:
  - 3-1: A beach level that allows players to use swimming mechanics.
  - 3-2: An underwater level filled with various aquatic enemies and treasures.
  - 3-3: A challenging level that combines swimming and platforming.
- Unique Features: The introduction of the Penguin Suit, which allows players to swim better and slide on ice.

## **World 4: Snowy Land**

- Theme: A winter wonderland filled with snow, ice, and chilly enemies.

- Levels:
- 4-1: A snowy platforming level with slippery surfaces.
- 4-2: An ice cave level featuring icy hazards and hidden paths.
- 4-3: A mini-boss battle against a snow-themed enemy.
- Unique Features: The emphasis on ice physics, requiring players to adapt their jumping and movement.

## **World 5: Sky Land**

- Theme: A world set among clouds, featuring floating islands and soaring heights.
- Levels:
- 5-1: Introduces players to flying platforms and the challenges of falling.
- 5-2: A level set atop clouds with wind mechanics that affect jump height.
- 5-3: A more complex level that requires precise timing and coordination.
- Unique Features: The introduction of flying mechanics that allow players to navigate through the sky.

## **World 6: Rock Candy Mine**

- Theme: A whimsical world filled with candy-themed elements and rocky caves.
- Levels:
- 6-1: A colorful level that introduces unique candy-themed enemies.
- 6-2: A mine cart level that involves riding carts and jumping over obstacles.
- 6-3: A challenging level filled with traps and difficult platforming sections.
- Unique Features: The use of mine carts adds a dynamic and fast-paced element to gameplay.

## **World 7: Pipe Land**

- Theme: A world dominated by pipes, featuring underground passages and aquatic elements.
- Levels:
- 7-1: A pipe-centric level that encourages exploration of hidden areas.
- 7-2: An underwater level that challenges players with various aquatic enemies.
- 7-3: A level that combines land and water mechanics.
- Unique Features: The use of pipes as both transportation and as obstacles enhances the strategic elements of gameplay.

## World 8: Bowser's Castle

- Theme: The final showdown takes place in a dark and foreboding castle.
- Levels:
  - 8-1: A level filled with lava pits and challenging platforming sections.
  - 8-2: Features a series of traps and enemies leading up to Bowser.
  - 8-3: The final battle against Bowser, where players must use all their acquired skills.
- Unique Features: The level design culminates in a challenging series of obstacles, testing players' mastery of the game mechanics.

## Secret Exits and Hidden Levels

One of the standout features of New Super Mario Bros Wii is the inclusion of secret exits and hidden levels. These not only enhance the replayability of the game but also reward exploration and creativity.

- Secret Exits: Each world contains secret exits that lead to hidden levels and shortcuts. Finding these exits often requires players to explore off the beaten path, utilizing power-ups and abilities to reach otherwise inaccessible areas.
- Hidden Levels: For example, World 1-4 features a hidden level that adds an additional layer of challenge and fun for players who seek to uncover every secret.

## The Multiplayer Experience

New Super Mario Bros Wii introduced a cooperative multiplayer mode, allowing up to four players to join in on the fun. This feature significantly changes the dynamics of gameplay, creating a unique experience for players.

- Cooperation vs. Competition: Players can work together to defeat enemies and reach goals, but they can also inadvertently hinder each other's progress by bumping into one another or disrupting jumps.
- Power-Up Sharing: Players can share power-ups, which encourages teamwork and strategy.
- Chaos and Fun: The multiplayer aspect introduces a chaotic but enjoyable element, as players must navigate levels while coordinating with each other.

## Conclusion

New Super Mario Bros Wii maps are a testament to the enduring legacy of the Mario franchise. With their vibrant themes, engaging gameplay mechanics, and

the introduction of cooperative multiplayer, these maps offer a rich and diverse gaming experience. Exploring each world, uncovering secrets, and navigating challenges provides hours of entertainment for players of all ages. Whether playing solo or with friends, New Super Mario Bros Wii successfully captures the spirit of adventure and fun that has made Mario a beloved character for decades. As players continue to revisit these maps, they not only relive nostalgia but also experience the joy of discovering new strategies, secrets, and challenges within this classic title.

## **Frequently Asked Questions**

### **What are some of the new features introduced in the Super Mario Bros Wii maps?**

The new maps in Super Mario Bros Wii feature dynamic elements like moving platforms, interactive environments, and unique power-ups that enhance gameplay.

### **How many new maps were added in the latest Super Mario Bros Wii update?**

The latest update introduced 15 new maps, each with distinct themes and challenges.

### **Are there any new enemies in the new Super Mario Bros Wii maps?**

Yes, the new maps include several new enemies, such as the 'Spike' and 'Boomerang Bro', adding more variety to gameplay.

### **Can players use power-ups in the new Super Mario Bros Wii maps?**

Absolutely! Players can collect and use various power-ups like the Super Mushroom and Ice Flower to aid them in their adventures in the new maps.

### **Is there a multiplayer mode for the new Super Mario Bros Wii maps?**

Yes, the new maps support multiplayer mode, allowing up to four players to team up and tackle challenges together.

### **What is the best strategy for completing the new Super Mario Bros Wii maps?**

A good strategy is to explore thoroughly for hidden areas, coordinate with your teammates in multiplayer mode, and make use of power-ups strategically.

# Are there any secrets or easter eggs in the new Super Mario Bros Wii maps?

Yes, many of the new maps contain hidden areas, secret coins, and easter eggs that players can discover for extra rewards.

Find other PDF article:

<https://soc.up.edu.ph/03-page/Book?trackid=vrM23-8344&title=a-thread-across-the-ocean.pdf>

## New Super Mario Bros Wii Maps

Create a Gmail account - Google Help

Important: Before you set up a new Gmail account, make sure to sign out of your current Gmail account. Learn how to sign out of Gmail. From your device, go to the Google Account sign in ...

### What is the 'new' keyword in JavaScript? - Stack Overflow

The new keyword in JavaScript can be quite confusing when it is first encountered, as people tend to think that JavaScript is not an object-oriented programming language. What is it? What ...

byrut.rog - byrut.rog

May 1, 2025 · byrut.rog

wland - wland

Sep 6, 2024 · wland

bigbang - bigbang

Aug 15, 2014 · bigbang

### How to recover your Google Account or Gmail

To find your username, follow these steps. You need to know: A phone number or the recovery email address for the account. The full name on your account. Follow the instructions to ...

-

Dec 10, 2024 · 1. AlabamaAL2. AlaskaAK3. ArizonaAZ4. Arkansas ...

edge - edge

Nov 22, 2024 · edge

### Download and install Google Chrome

How to install Chrome Important: Before you download, you can check if Chrome supports your operating system and other system requirements.

[Sign in to Gmail - Computer - Gmail Help - Google Help](#)

Sign in to Gmail Tip: If you sign in to a public computer, make sure to sign out before you leave the computer. Learn how to sign in on a device that's not yours.

## Create a Gmail account - Google Help

Important: Before you set up a new Gmail account, make sure to sign out of your current Gmail account. Learn how to sign out of Gmail. From your device, go to the Google Account sign in ...

[What is the 'new' keyword in JavaScript? - Stack Overflow](#)

The new keyword in JavaScript can be quite confusing when it is first encountered, as people tend to think that JavaScript is not an object-oriented programming language. What is it? What ...

[byrut.rog - byrut.rog - byrut.rog](#)

May 1, 2025 · byrut.rog - byrut.rog

[wland - wland](#)

Sep 6, 2024 · wland - Wland 1. \*\*

[bigbang - bigbang](#)

Aug 15, 2014 · bigbang BigBang Ye the finally I realize that I'm nothing without you I was so ...

## How to recover your Google Account or Gmail

To find your username, follow these steps. You need to know: A phone number or the recovery email address for the account. The full name on your account. Follow the instructions to ...

[-](#)

Dec 10, 2024 · 1. Alabama AL2. Alaska AK3. Arizona AZ4. Arkansas ...

[edge - edge?](#)

Nov 22, 2024 · edge Edge ...

## Download and install Google Chrome

How to install Chrome Important: Before you download, you can check if Chrome supports your operating system and other system requirements.

[Sign in to Gmail - Computer - Gmail Help - Google Help](#)

Sign in to Gmail Tip: If you sign in to a public computer, make sure to sign out before you leave the computer. Learn how to sign in on a device that's not yours.

Explore the latest new Super Mario Bros Wii maps! Uncover tips

[Back to Home](#)