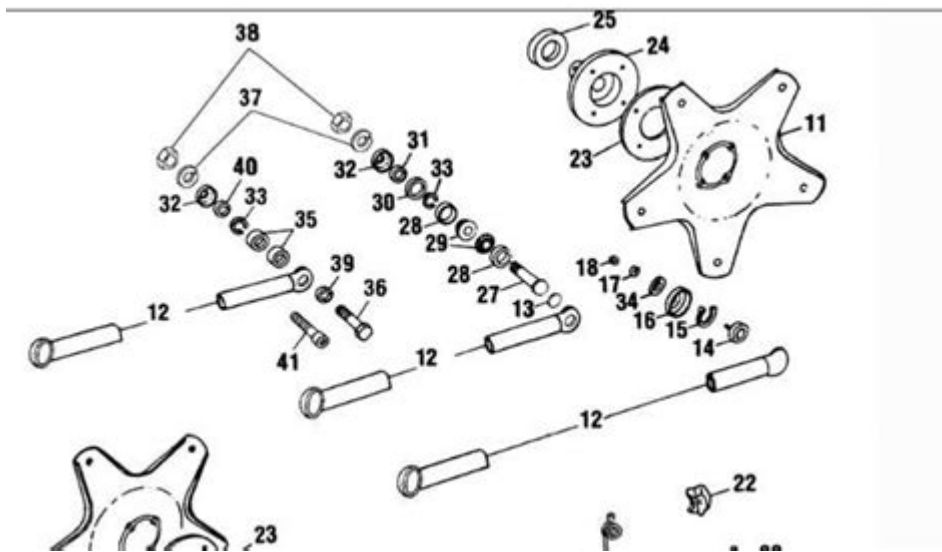


# New Holland 258 Hay Rake Parts Diagram



**New Holland 258 hay rake parts diagram** is an essential resource for farmers and equipment operators who rely on this particular model for their hay production operations. Understanding the components of the New Holland 258 hay rake can greatly enhance maintenance, repair, and operational efficiency. This article will delve into the parts diagram of the New Holland 258 hay rake, discussing its components, their functions, and maintenance tips to ensure optimal performance.

## Overview of the New Holland 258 Hay Rake

The New Holland 258 hay rake is a well-regarded piece of agricultural equipment designed for efficiency and reliability in hay production. Known for its durability and user-friendly design, it is popular among farmers who need to manage large fields of hay. The rake typically features several key components that work together to gather and arrange hay in preparation for baling.

## Key Components of the New Holland 258 Hay Rake

Understanding the parts of the New Holland 258 hay rake can help in troubleshooting and performing maintenance. Below are the main components illustrated in the parts diagram:

### 1. Rake Frame

The rake frame is the main structure of the hay rake, providing stability and support to the other components. It is usually made of heavy-duty steel to withstand the rigors of field use.

## **2. Rake Wheels**

Rake wheels are crucial for the operation of the hay rake. Each wheel has a set of tines that gather hay and move it into a windrow. The rake wheels are adjustable to accommodate different field conditions.

## **3. Tines**

The tines are the metal fingers attached to the rake wheels. They play a vital role in collecting hay. Typically made from high-strength steel, tines should be inspected regularly for wear and damage.

## **4. Gearbox**

The gearbox is responsible for transferring power from the tractor to the rake. It is essential for the operation of the rake wheels and must be properly lubricated to function smoothly.

## **5. Tongue Assembly**

The tongue assembly connects the rake to the tractor. It must be robust enough to handle the weight of the rake and the stresses of operation.

## **6. Hydraulic Lift System**

The hydraulic lift system allows the operator to raise or lower the rake while in operation. This system is typically powered by the tractor's hydraulic system and is crucial for maneuverability in different types of terrain.

## **7. Spindle Assembly**

The spindle assembly connects the rake wheels to the frame. It allows for free spinning of the wheels and tines, enabling efficient hay collection.

## **8. Bearings**

Bearings are found throughout the rake, providing smooth movement for various components. Regular maintenance and lubrication are necessary to prevent wear and tear.

## **Parts Diagram Breakdown**

A parts diagram is a visual representation of the various components of the New Holland 258 hay rake. Understanding this diagram can help operators identify parts, understand their functions, and order replacements when necessary.

# 1. Identifying Parts

The parts diagram typically includes labels for each component, allowing users to quickly locate items such as:

- Rake Frame
- Rake Wheels
- Tines
- Gearbox
- Tongue Assembly
- Hydraulic Lift System
- Spindle Assembly
- Bearings

# 2. Importance of the Parts Diagram

The parts diagram serves several important functions:

- Easier Maintenance: It provides a clear visual reference for parts, making it easier to perform inspections and replacements.
- Ordering Parts: Knowing the exact part number and its location can simplify the process of ordering replacements.
- Assembly/Disassembly: A parts diagram can guide users during assembly or disassembly, reducing the risk of errors.

# Maintenance Tips for the New Holland 258 Hay Rake

Proper maintenance is crucial to ensure the longevity and efficiency of the New Holland 258 hay rake. Here are some essential maintenance tips:

## 1. Regular Inspections

Conduct routine inspections of all major components, including:

- Rake wheels and tines for wear and tear.
- The gearbox for oil levels and leaks.
- Hydraulic hoses for cracks or leaks.
- The frame for any signs of bending or damage.

## 2. Lubrication

Regularly lubricate moving parts, particularly:

- Bearings to reduce friction and wear.
- The gearbox to ensure smooth power transfer.
- The hydraulic lift system to ensure proper function.

### **3. Tine Replacement**

Monitor the condition of the tines. If they show signs of excessive wear or bending, replace them promptly to maintain efficiency in hay collection.

### **4. Cleaning**

After each use, clean the rake to remove debris, dirt, and hay residue. This prevents rust and promotes optimal operation.

### **5. Seasonal Maintenance**

Before the start of the haying season, perform a thorough check of the entire rake, including:

- Tightening any loose bolts or connections.
- Checking hydraulic systems and topping off fluids if necessary.
- Inspecting tires for proper inflation and wear.

## **Conclusion**

The New Holland 258 hay rake parts diagram is an invaluable tool for anyone involved in hay production. Familiarity with its components facilitates proper maintenance, repairs, and efficient operation. By understanding the parts, their functions, and adhering to maintenance practices, operators can maximize the performance of their hay rake and ensure a successful harvest season. Whether you are a seasoned farmer or a newcomer to hay production, having a solid grasp of the New Holland 258 hay rake and its parts diagram will undoubtedly enhance your farming operations.

## **Frequently Asked Questions**

### **Where can I find a parts diagram for the New Holland 258 hay rake?**

You can find a parts diagram for the New Holland 258 hay rake on the official New Holland website or through authorized dealers. Additionally, online agricultural parts retailers and forums may also provide access to these diagrams.

### **What are the common replacement parts needed for the New Holland 258 hay rake?**

Common replacement parts for the New Holland 258 hay rake include tines, bearings, wheels, and hydraulic components. Regular maintenance also requires checking and replacing wear items such as belts and chains.

## Is the New Holland 258 hay rake parts diagram compatible with other models?

While the parts diagram for the New Holland 258 hay rake is specific to that model, some parts may be compatible with other New Holland hay rakes. It's essential to verify part numbers for compatibility before purchasing.

## How do I interpret the parts diagram for the New Holland 258 hay rake?

To interpret the parts diagram for the New Holland 258 hay rake, start by identifying the section of the rake you are working on. Each part will be labeled with a reference number that corresponds to a parts list, which indicates the part name and number.

## Are there any online resources for troubleshooting issues with the New Holland 258 hay rake?

Yes, there are several online resources for troubleshooting issues with the New Holland 258 hay rake, including forums, how-to videos on platforms like YouTube, and the New Holland support page, which may provide troubleshooting guides and tips.

Find other PDF article:

<https://soc.up.edu.ph/60-flick/files?dataid=gwj44-8040&title=the-ministry-for-the-future-ebook.pdf>

## New Holland 258 Hay Rake Parts Diagram

Create a Gmail account - Google Help

Important: Before you set up a new Gmail account, make sure to sign out of your current Gmail account. [Learn how to ...](#)

## What is the 'new' keyword in JavaScript? - Stack Overflow

The new keyword in JavaScript can be quite confusing when it is first encountered, as people tend to think ...

byrut.roq byrut

May 1, 2025 · byrut.rog byrut

**wland**□□□□□□ - □□□□

Sep 6, 2024 · wland Wland 1. \*\*

bigbang

Aug 15, 2014 · bigbang BigBang Ye the ...

## Create a Gmail account - Google Help

Important: Before you set up a new Gmail account, make sure to sign out of your current Gmail

account. Learn how to sign out of ...

*What is the 'new' keyword in JavaScript? - Stack Overflow*

The new keyword in JavaScript can be quite confusing when it is first encountered, as people tend to think that JavaScript is not ...

*byrut.rog* · byrut · byrut\_

May 1, 2025 · byrut.rog · byrut

*wland* -

Sep 6, 2024 · wland · Wland1. \*\*

*bigbang* ·

Aug 15, 2014 · bigbang · BigBang · Ye the finally I realize ...

Explore the complete New Holland 258 hay rake parts diagram to enhance your equipment maintenance. Learn more about essential components and upkeep tips!

[Back to Home](#)