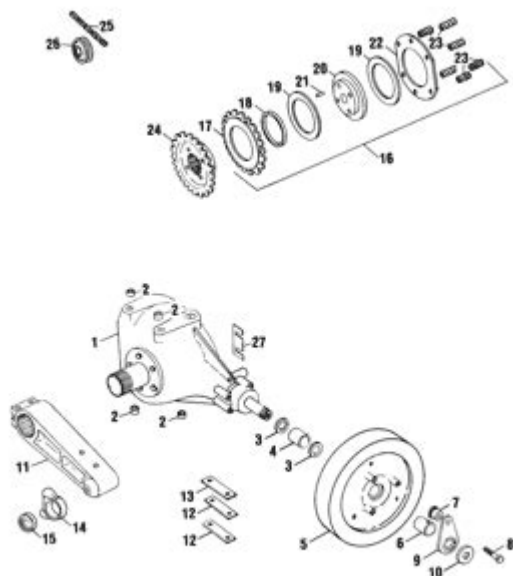


# New Holland 310 Baler Parts Diagram



**New Holland 310 baler parts diagram** serves as an essential guide for farmers and agricultural equipment operators. Understanding the components of this widely used piece of machinery is crucial for maintenance, repairs, and overall efficiency. The New Holland 310 baler, known for its reliability and durability, is a favorite among those in the hay and forage industry. This article will explore the key parts of the New Holland 310 baler, how to interpret its parts diagram, and tips for maintaining the baler effectively.

## Overview of the New Holland 310 Baler

The New Holland 310 baler is a square baler designed to produce uniform bales of hay or straw. With its sturdy construction and efficient operation, it has become a staple for both small and large farms. The baler features a series of components that work together to gather, compress, and tie bales for easy handling and storage.

## Key Components of the New Holland 310 Baler

To understand the New Holland 310 baler parts diagram, it's essential to familiarize yourself with its key components. Below are the major parts of the baler:

1. Pickup Assembly: This is the front part of the baler that collects the hay or straw from the ground. It consists of:
  - Pickup tines
  - Roller

- Drive assembly

2. Feed Chamber: The feed chamber is where the collected material is fed into the baler for compression. It includes:

- Feed forks
- Auger

3. Bale Chamber: This is the heart of the baler where the hay is compressed into bales. Key components include:

- Bale forming plates
- Compression rollers

4. Tying Mechanism: After the bale is formed, it must be tied securely. The tying mechanism consists of:

- Knotters
- Twine dispensing system

5. Discharge Chute: Once the bales are tied, they are ejected from the baler through the discharge chute.

6. Frame and Chassis: The structural support of the baler, which holds all components together.

7. Wheels and Axles: These allow the baler to be towed by a tractor.

## Understanding the Parts Diagram

The New Holland 310 baler parts diagram is a visual representation of all the components mentioned above. It is often found in the operator's manual and is invaluable for troubleshooting and maintenance tasks. Here's how to interpret it effectively:

- Labeling: Each part is usually labeled with a reference number that corresponds to a parts list. This makes it easier to identify and order replacements.
- Layout: The diagram is typically laid out in a way that shows the relationship between parts. For example, the pickup assembly may be shown at the front, followed by the feed chamber and bale chamber.
- Exploded View: Some diagrams utilize an exploded view, where parts are shown separated from one another. This provides clarity on how components fit together.
- Color Coding: Certain diagrams may use color to differentiate between various systems (e.g., hydraulic vs. mechanical parts).

## Common Parts and Their Functions

Understanding the specific functions of common parts can help in troubleshooting and

maintenance. Here's a closer look at some of the most critical components:

## 1. Pickup Assembly

The pickup assembly is crucial for collecting material. It has several tines that sweep the hay into the baler. Problems with the pickup can lead to inefficient gathering, so it's essential to check for wear and tear regularly.

## 2. Knotters

The knotters are among the most complex parts of the baler. They are responsible for tying the bales securely with twine. Proper adjustment is critical to ensure that bales are tied correctly and that the knotters do not jam.

## 3. Bale Chamber

The bale chamber's primary function is to compress the gathered material into a dense, solid bale. If the chamber becomes blocked or clogged, it can cause significant operational issues. Regular cleaning and maintenance are necessary to prevent such problems.

# Maintenance Tips for the New Holland 310 Baler

Maintaining the New Holland 310 baler is crucial for maximizing its lifespan and ensuring optimal performance. Here are some essential maintenance tips:

1. **Regular Inspections:** Conduct regular inspections of all moving parts, including the pickup assembly, knotters, and bale chamber. Look for signs of wear or damage.
2. **Lubrication:** Ensure that all moving parts are adequately lubricated. This helps in reducing friction and preventing premature wear.
3. **Cleanliness:** Keep the baler clean. Debris can cause blockages and affect the performance of the machine.
4. **Adjustments:** Make necessary adjustments to the knotters and tension settings to ensure proper operation.
5. **Owner's Manual:** Refer to the owner's manual for specific maintenance schedules and procedures related to your model.

# Ordering Replacement Parts

When it comes to replacing parts, understanding the parts diagram can significantly simplify the process. Here are some tips for ordering replacement parts:

- **Use the Reference Numbers:** Refer to the parts diagram for reference numbers when ordering parts. This ensures you get the exact component.
- **OEM vs. Aftermarket:** Decide whether to use Original Equipment Manufacturer (OEM) parts or aftermarket parts. OEM parts are generally more reliable but can be more expensive.
- **Local Dealers:** Consider visiting local dealers or agricultural supply stores that specialize in New Holland equipment for assistance and availability of parts.
- **Online Resources:** Utilize online platforms that specialize in agricultural equipment parts for wider selections and competitive pricing.

## Conclusion

The New Holland 310 baler parts diagram is an invaluable tool for anyone who operates, maintains, or repairs this essential agricultural equipment. By understanding the key components and their functions, along with effective maintenance practices, you can ensure that your baler operates efficiently for years to come. Whether you are troubleshooting an issue or ordering replacement parts, having a good grasp of the parts diagram will streamline the process and help maintain the reliability of your New Holland 310 baler.

## Frequently Asked Questions

### What is a New Holland 310 baler parts diagram used for?

A New Holland 310 baler parts diagram is used to identify and locate specific parts of the baler, making it easier for users to understand the assembly and maintenance of the machine.

### Where can I find a reliable New Holland 310 baler parts diagram?

Reliable New Holland 310 baler parts diagrams can be found in the official New Holland service manuals, dealer websites, and several agricultural machinery repair websites.

## **What are the common parts included in the New Holland 310 baler parts diagram?**

Common parts included in the New Holland 310 baler parts diagram are the pickup assembly, knotters, bale chamber, and drive components.

## **How can I use the parts diagram to troubleshoot my New Holland 310 baler?**

You can use the parts diagram to identify components that may be malfunctioning, locate part numbers for replacements, and understand how different parts interact within the baler.

## **Are there online resources for downloading the New Holland 310 baler parts diagram?**

Yes, several websites offer downloadable PDF versions of the New Holland 310 baler parts diagram, including agricultural equipment forums and parts suppliers.

## **Can I get an exploded view of the New Holland 310 baler in the parts diagram?**

Yes, many parts diagrams provide an exploded view of the New Holland 310 baler, showing each component separately and how they fit together.

## **Is there a difference between the parts diagram for the New Holland 310 baler and other models?**

Yes, each baler model, including the New Holland 310, has a unique parts diagram that reflects its specific components and configurations, so it's important to use the correct diagram for your model.

## **What should I do if I cannot find a specific part in the New Holland 310 baler parts diagram?**

If you cannot find a specific part in the diagram, consider contacting a New Holland dealer or service center for assistance, as they can provide detailed information and help you identify the part.

## **How often should I refer to the New Holland 310 baler parts diagram for maintenance?**

It's advisable to refer to the New Holland 310 baler parts diagram regularly during maintenance checks, especially when inspecting or replacing worn or damaged parts.

Find other PDF article:

<https://soc.up.edu.ph/62-type/Book?dataid=gLv07-8964&title=thomas-watson-advanced-physics-dow-n-syndrome.pdf>

Important: Before you set up a new Gmail account, make sure to sign out of your current Gmail account. Learn how to sign out of Gmail. From your device, go to the Google Account sign in page. Click Create account. In the drop down, select if the account is for your: Personal use Child Work or business To set up your account, follow the steps on the screen.

