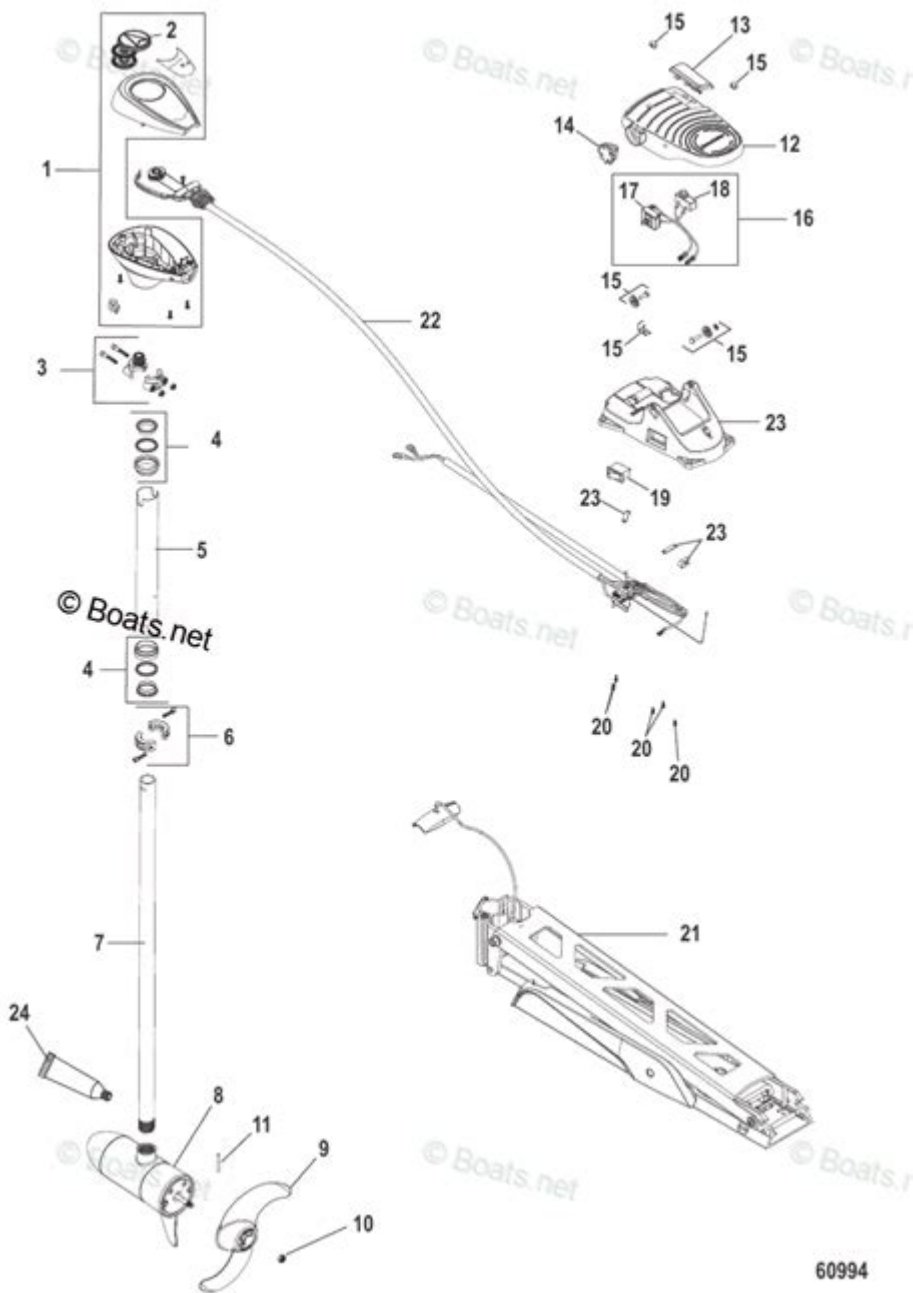


Motorguide X3 Parts Diagram



MOTORGUIDE X3 PARTS DIAGRAM IS AN ESSENTIAL RESOURCE FOR ANYONE LOOKING TO MAINTAIN OR REPAIR THEIR MOTORGUIDE X3 TROLLING MOTOR. UNDERSTANDING THE VARIOUS COMPONENTS OF THIS POWERFUL TOOL CAN SIGNIFICANTLY ENHANCE YOUR FISHING EXPERIENCE AND EXTEND THE LIFESPAN OF YOUR EQUIPMENT. IN THIS ARTICLE, WE'LL EXPLORE THE KEY ELEMENTS OF THE MOTORGUIDE X3, PROVIDE AN OVERVIEW OF ITS PARTS DIAGRAM, AND OFFER INSIGHTS ON HOW TO EFFECTIVELY USE THIS INFORMATION FOR REPAIRS AND MAINTENANCE.

UNDERSTANDING THE MOTORGUIDE X3 TROLLING MOTOR

THE MOTORGUIDE X3 IS A POPULAR CHOICE AMONG ANGLERS DUE TO ITS RELIABILITY, PERFORMANCE, AND EASE OF USE. THIS TROLLING MOTOR IS DESIGNED FOR FRESHWATER FISHING, PROVIDING SILENT OPERATION AND PRECISE CONTROL TO HELP YOU

NAVIGATE THROUGH DIFFERENT WATER CONDITIONS. KNOWING THE VARIOUS PARTS OF THE MOTOR IS CRUCIAL FOR TROUBLESHOOTING AND REPAIR TASKS.

COMPONENTS OF THE MOTORGUIDE X3

TO MAXIMIZE THE PERFORMANCE OF YOUR MOTORGUIDE X3, IT'S IMPORTANT TO FAMILIARIZE YOURSELF WITH ITS COMPONENTS. THE PARTS DIAGRAM IS A VISUAL REPRESENTATION THAT CAN HELP YOU UNDERSTAND THE STRUCTURE AND FUNCTION OF EACH COMPONENT. BELOW ARE THE MAIN PARTS OF THE MOTORGUIDE X3:

1. MOTOR ASSEMBLY

THE MOTOR ASSEMBLY IS THE CORE OF THE TROLLING MOTOR, CONSISTING OF:

- PROPELLER: THE PROPELLER GENERATES THRUST AND PROPELS THE BOAT FORWARD.
- MOTOR HOUSING: THIS ENCASES THE MOTOR AND PROTECTS IT FROM WATER AND DEBRIS.
- SHAFT: CONNECTS THE MOTOR TO THE PROPELLER AND TRANSMITS POWER.

2. STEERING SYSTEM

THE STEERING SYSTEM ALLOWS YOU TO CONTROL THE DIRECTION OF THE BOAT. KEY COMPONENTS INCLUDE:

- TILLER HANDLE: USED TO STEER THE MOTOR AND CONTROL SPEED.
- STEERING CABLE: CONNECTS THE TILLER TO THE MOTOR, ENABLING MOVEMENT.
- MOUNTING BRACKET: HOLDS THE MOTOR IN PLACE AND ALLOWS FOR ADJUSTMENT.

3. ELECTRICAL COMPONENTS

ELECTRICAL COMPONENTS ARE VITAL FOR THE OPERATION OF THE MOTORGUIDE X3. THEY INCLUDE:

- CONTROL BOARD: MANAGES THE MOTOR'S FUNCTIONS AND SPEED SETTINGS.
- BATTERY CONNECTORS: CONNECT THE MOTOR TO THE POWER SOURCE.
- WIRING HARNESS: FACILITATES ELECTRICAL CONNECTIONS BETWEEN COMPONENTS.

4. MOUNTING COMPONENTS

THESE COMPONENTS ARE CRUCIAL FOR SECURING THE MOTOR TO THE BOAT:

- MOUNTING PLATE: PROVIDES A STABLE BASE FOR THE MOTOR.
- QUICK RELEASE BRACKET: ALLOWS FOR EASY ATTACHMENT AND REMOVAL OF THE MOTOR.
- LOCKING PINS: ENSURE THE MOTOR STAYS SECURELY MOUNTED.

USING THE MOTORGUIDE X3 PARTS DIAGRAM

THE MOTORGUIDE X3 PARTS DIAGRAM SERVES AS AN INVALUABLE TOOL FOR BOTH NEW USERS AND SEASONED ANGLERS. IT ALLOWS YOU TO IDENTIFY COMPONENTS EASILY WHEN PERFORMING MAINTENANCE OR REPAIRS. HERE'S HOW TO EFFECTIVELY UTILIZE THE PARTS DIAGRAM:

1. IDENTIFYING PARTS

WITH THE PARTS DIAGRAM, YOU CAN:

- QUICKLY LOCATE SPECIFIC COMPONENTS.
- UNDERSTAND HOW PARTS INTERACT AND FUNCTION TOGETHER.
- RECOGNIZE ANY MISSING OR DAMAGED PARTS THAT NEED REPLACEMENT.

2. PERFORMING MAINTENANCE

REGULAR MAINTENANCE IS KEY TO ENSURING YOUR TROLLING MOTOR OPERATES EFFICIENTLY. USE THE DIAGRAM TO:

- LOCATE AREAS THAT REQUIRE LUBRICATION.
- IDENTIFY FILTERS OR OTHER COMPONENTS THAT NEED CLEANING OR REPLACEMENT.
- CHECK WIRING AND ELECTRICAL CONNECTIONS FOR WEAR AND TEAR.

3. TROUBLESHOOTING ISSUES

WHEN ISSUES ARISE, THE PARTS DIAGRAM CAN HELP YOU:

- TRACE THE SOURCE OF A MALFUNCTION.
- UNDERSTAND THE FUNCTION OF EACH COMPONENT, MAKING IT EASIER TO DIAGNOSE PROBLEMS.
- IDENTIFY THE CORRECT REPLACEMENT PARTS NEEDED FOR REPAIRS.

COMMON ISSUES AND SOLUTIONS

DESPITE THE DURABILITY OF THE MOTORGUIDE X3, SOME COMMON ISSUES MAY ARISE. HERE ARE A FEW PROBLEMS YOU MIGHT ENCOUNTER, ALONG WITH THEIR POTENTIAL SOLUTIONS:

1. MOTOR NOT STARTING

IF YOUR MOTOR FAILS TO START, CONSIDER THE FOLLOWING:

- CHECK BATTERY CONNECTIONS: ENSURE THAT THE BATTERY CONNECTORS ARE CLEAN AND SECURE.
- INSPECT THE CONTROL BOARD: LOOK FOR ANY VISIBLE DAMAGE OR BURNT COMPONENTS.
- TEST THE BATTERY: MAKE SURE THE BATTERY IS CHARGED AND FUNCTIONING PROPERLY.

2. WEAK PROPULSION

IF YOUR TROLLING MOTOR IS NOT PROVIDING ADEQUATE THRUST, TRY THESE SOLUTIONS:

- INSPECT THE PROPELLER: CHECK FOR ANY OBSTRUCTIONS OR DAMAGE TO THE PROPELLER.
- CHECK THE SHAFT: ENSURE THE SHAFT IS NOT BENT OR DAMAGED.
- EXAMINE WIRING: LOOK FOR FRAYED WIRES OR LOOSE CONNECTIONS THAT COULD AFFECT PERFORMANCE.

3. STEERING ISSUES

IF YOU EXPERIENCE DIFFICULTIES STEERING YOUR MOTOR:

- CHECK THE TILLER HANDLE: ENSURE IT MOVES FREELY AND IS NOT OBSTRUCTED.
- INSPECT THE STEERING CABLE: LOOK FOR ANY SIGNS OF WEAR OR DAMAGE.

- EXAMINE MOUNTING BRACKET: MAKE SURE THE BRACKET IS SECURELY FASTENED AND NOT LOOSE.

WHERE TO FIND THE PARTS DIAGRAM

FINDING A RELIABLE PARTS DIAGRAM FOR THE MOTORGUIDE X3 IS ESSENTIAL FOR EFFECTIVE MAINTENANCE AND REPAIRS. HERE ARE SOME PLACES TO LOOK:

- OFFICIAL MOTORGUIDE WEBSITE: THE MANUFACTURER OFTEN PROVIDES DOWNLOADABLE DIAGRAMS AND PARTS LISTS.
- OWNER'S MANUAL: CHECK YOUR OWNER'S MANUAL FOR INCLUDED DIAGRAMS AND MAINTENANCE TIPS.
- ONLINE FORUMS AND COMMUNITIES: MANY FISHING AND BOATING FORUMS SHARE RESOURCES, INCLUDING PARTS DIAGRAMS.

CONCLUSION

IN CONCLUSION, UNDERSTANDING THE **MOTORGUIDE X3 PARTS DIAGRAM** IS CRUCIAL FOR ANY ANGLER WHO WANTS TO MAINTAIN THEIR EQUIPMENT EFFECTIVELY. FAMILIARIZING YOURSELF WITH THE COMPONENTS WILL NOT ONLY AID IN TROUBLESHOOTING AND REPAIRS BUT ALSO ENHANCE YOUR OVERALL FISHING EXPERIENCE. BY UTILIZING THE DIAGRAM, PERFORMING REGULAR MAINTENANCE, AND ADDRESSING COMMON ISSUES PROMPTLY, YOU CAN ENSURE YOUR MOTORGUIDE X3 CONTINUES TO OPERATE AT PEAK PERFORMANCE FOR YEARS TO COME. WHETHER YOU'RE A NOVICE OR AN EXPERIENCED ANGLER, HAVING THIS KNOWLEDGE AT YOUR FINGERTIPS IS INVALUABLE FOR ENSURING A SUCCESSFUL DAY ON THE WATER.

FREQUENTLY ASKED QUESTIONS

WHAT IS THE PURPOSE OF THE MOTORGUIDE X3 PARTS DIAGRAM?

THE MOTORGUIDE X3 PARTS DIAGRAM PROVIDES A VISUAL REPRESENTATION OF THE TROLLING MOTOR'S COMPONENTS, HELPING USERS IDENTIFY AND LOCATE SPECIFIC PARTS FOR MAINTENANCE OR REPLACEMENT.

WHERE CAN I FIND THE MOTORGUIDE X3 PARTS DIAGRAM ONLINE?

YOU CAN FIND THE MOTORGUIDE X3 PARTS DIAGRAM ON THE OFFICIAL MOTORGUIDE WEBSITE, IN THE PRODUCT MANUAL, OR ON VARIOUS BOATING AND FISHING FORUMS THAT DISCUSS TROLLING MOTOR MAINTENANCE.

HOW CAN I USE THE PARTS DIAGRAM TO TROUBLESHOOT MY MOTORGUIDE X3?

YOU CAN USE THE PARTS DIAGRAM TO IDENTIFY WHICH COMPONENTS MAY BE MALFUNCTIONING OR DAMAGED BY CROSS-REFERENCING SYMPTOMS WITH THE PARTS LISTED IN THE DIAGRAM.

ARE ALL PARTS OF THE MOTORGUIDE X3 AVAILABLE FOR PURCHASE?

MOST PARTS OF THE MOTORGUIDE X3 ARE AVAILABLE FOR PURCHASE THROUGH AUTHORIZED DEALERS, ONLINE RETAILERS, AND THE MOTORGUIDE WEBSITE, BUT AVAILABILITY MAY VARY.

WHAT COMMON ISSUES CAN I FIX USING THE MOTORGUIDE X3 PARTS DIAGRAM?

COMMON ISSUES SUCH AS A MALFUNCTIONING PROPELLER, FAULTY WIRING, OR A BROKEN MOUNT CAN OFTEN BE DIAGNOSED AND FIXED USING THE PARTS DIAGRAM AS A REFERENCE.

IS THE MOTORGUIDE X3 PARTS DIAGRAM THE SAME FOR ALL MODELS?

NO, THE PARTS DIAGRAM CAN VARY BETWEEN DIFFERENT MODELS OF THE MOTORGUIDE X3, SO IT'S IMPORTANT TO ENSURE YOU ARE LOOKING AT THE DIAGRAM FOR YOUR SPECIFIC MODEL.

CAN I DOWNLOAD THE MOTORGUIDE X3 PARTS DIAGRAM?

YES, MANY MANUFACTURERS, INCLUDING MOTORGUIDE, PROVIDE DOWNLOADABLE PDFs OF THEIR PARTS DIAGRAMS ON THEIR OFFICIAL WEBSITES FOR EASY ACCESS AND REFERENCE.

WHAT TOOLS DO I NEED TO REPLACE PARTS USING THE MOTORGUIDE X3 PARTS DIAGRAM?

TYPICALLY, YOU WILL NEED BASIC TOOLS SUCH AS SCREWDRIVERS, WRENCHES, AND PLIERS, DEPENDING ON THE SPECIFIC PARTS YOU ARE REPLACING AS OUTLINED IN THE PARTS DIAGRAM.

Find other PDF article:

<https://soc.up.edu.ph/68-fact/pdf?ID=cPp68-6899&title=y-words-in-biology.pdf>

[Motorguide X3 Parts Diagram](#)

ECS -

ECS/ -ECS cache ...

ECS -

ECS ECS ...

ecs -

ECS Elastic Compute Service ...

CVM ECS -

cvm ecs ...

ecs -

(ECS) TIMES ...

Reflections at Cherry Creek | Apartments in Aurora, CO

Welcome to Reflections at Cherry Creek in Aurora, CO. View floor plans, photos, and community amenities. Make Reflections at Cherry Creek your new home.

Floor Plans of Reflections at Cherry Creek in Aurora, CO

Check for available units at Reflections at Cherry Creek in Aurora, CO. View floor plans, photos, and community amenities. Make Reflections at Cherry Creek your new home.

Apartments in Aurora, CO - Reflections at Cherry Creek

Matterport 3D Showcase.Guided Tour 45 MIN Tour in-person with one of our agents.

Reflections at Cherry Creek | Apartment and Community Amenities

View unit and community amenities for Reflections at Cherry Creek in Aurora, CO.

Reflections at Cherry Creek

Please select an apartment from the list below that best suits your needs.

[Photos Gallery of Reflections at Cherry Creek in Aurora, CO](#)

View high-resolution photos of Reflections at Cherry Creek. Check out photos of our model apartment and community features like a pool, gym, and more.

[eBrochure - Reflections at Cherry Creek](#)

Reflections at Cherry Creek offers one, two and three-bedroom apartments in Aurora, CO and come outfitted with detailed features making our pet-friendly community your ideal home.

Reflections at Cherry Creek | Diamond | Available Units

View our available 1 - 1 apartments at Reflections at Cherry Creek in Aurora, CO. Schedule a tour today!

Contact Reflections at Cherry Creek to Schedule a Visit

Reflections at Cherry Creek offers one, two and three-bedroom apartments in Aurora, CO and come outfitted with detailed features making our pet-friendly community your ideal home.

Map and Directions to Reflections at Cherry Creek in Aurora, CO

Visit us at Reflections at Cherry Creek in Aurora, CO. View map and get directions.

Explore our comprehensive Motorguide X3 parts diagram to easily identify and locate essential components. Learn more about maintenance and upgrades today!

[Back to Home](#)