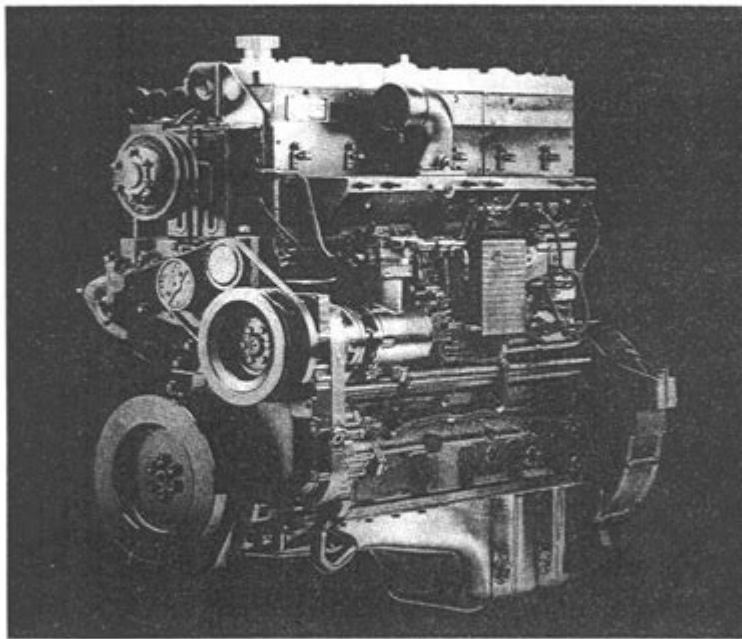


# N14 Celect Cummins Service Manual



Shop Manual  
N14 Engines



Copyright© 1991  
Cummins Engine Company, Inc.  
All rights reserved

Bulletin No. 3810487  
Printed 2/91

**N14 Celect Cummins Service Manual** is an essential resource for technicians and operators working with the Cummins N14 engine. This powerful diesel engine is renowned for its reliability and efficiency, making it a popular choice in various applications, including trucks, buses, and industrial machinery. Understanding the technical intricacies of the N14 engine is crucial for effective maintenance and troubleshooting. This article will provide an overview of the N14 Celect Cummins service manual, including its features, importance, and key components.

## Overview of the N14 Celect Engine

The N14 Celect engine is part of Cummins' N-series of diesel engines, introduced in the 1990s. Designed for heavy-duty applications, this engine boasts several innovative features that enhance its performance and

durability.

## **Key Specifications**

- Configuration: Inline 6-cylinder
- Displacement: 14.0 liters
- Power Output: Ranges from 330 to 500 horsepower
- Torque: Up to 1,650 lb-ft
- Fuel System: Electronic fuel control with a high-pressure common rail system
- Turbocharging: Equipped with a single or twin turbocharger, depending on the model

The N14 Celect engine is known for its robust construction and ability to handle demanding workloads. It is often favored in long-haul trucking and other applications where reliability is paramount.

## **Importance of the N14 Celect Cummins Service Manual**

The N14 Celect Cummins service manual serves as a comprehensive guide for maintenance and repair. It is a crucial tool for technicians, providing detailed information about the engine's design, operation, and troubleshooting procedures.

## **Features of the Service Manual**

1. **Technical Specifications:** The manual includes in-depth specifications for engine components, including dimensions, tolerances, and materials used in construction.
2. **Maintenance Procedures:** Step-by-step instructions for routine maintenance tasks, such as oil changes, filter replacements, and valve adjustments.
3. **Troubleshooting Guides:** Detailed diagnostic procedures to identify and resolve common issues, including electrical problems, fuel system faults, and performance irregularities.
4. **Diagrams and Illustrations:** Clear, labeled diagrams to assist in understanding engine layout and component relationships.
5. **Safety Information:** Guidelines for safe working practices when servicing the engine, including necessary personal protective equipment (PPE) and procedures to follow to avoid accidents.

## **Accessing the N14 Celect Cummins Service Manual**

The N14 Celect Cummins service manual can be obtained through various channels:

- **Official Cummins Dealer:** Authorized dealers often provide hard copies of the service manual or access to digital versions.
- **Online Resources:** Cummins' official website may offer downloadable PDF versions of the manual or links to resources.
- **Automotive Repair Shops:** Local repair shops specializing in diesel engines might have copies available for reference.
- **Online Marketplaces:** Websites like eBay or Amazon often list used or new service manuals for sale.

Before purchasing a manual, ensure that it corresponds to the specific model and configuration of the N14 engine you are working with.

## Key Maintenance Procedures in the N14 Celect Cummins Service Manual

Proper maintenance is vital for longevity and performance. The following is an overview of essential maintenance procedures outlined in the N14 Celect Cummins service manual:

### 1. Oil and Filter Changes

Regular oil changes are crucial for engine health. The manual provides the following guidelines:

- **Interval:** Change oil every 15,000 to 20,000 miles, or as recommended based on oil analysis.
- **Type of Oil:** Use high-quality diesel engine oil with appropriate API ratings.
- **Filter Replacement:** Replace oil filters with every oil change to prevent contaminants from circulating through the engine.

### 2. Fuel System Maintenance

Maintaining the fuel system ensures optimal performance and efficiency. Key steps include:

- **Fuel Filter Replacement:** Change the fuel filter every 10,000 miles to prevent clogging and ensure proper fuel flow.
- **Water Separator Maintenance:** Regularly check and drain the water separator to remove excess moisture from the fuel system.

### 3. Cooling System Checks

The cooling system is critical for preventing engine overheating. The manual recommends:

- Coolant Level Inspection: Regularly check coolant levels and top off as necessary.
- Radiator Cleaning: Clean the radiator and cooling fins to remove debris that may obstruct airflow.

## **4. Electrical System Inspection**

The N14 Celect engine features an advanced electronic control system. Maintenance steps include:

- Battery Check: Inspect battery terminals for corrosion and ensure secure connections.
- Wiring Inspection: Regularly check wiring harnesses for signs of wear or damage.

## **Troubleshooting Common Issues**

The N14 Celect Cummins service manual includes troubleshooting guides for common problems. Here are some frequent issues and suggested solutions:

### **1. Low Power Output**

If the engine exhibits low power, consider checking the following:

- Fuel System: Inspect the fuel filters and fuel lines for blockages.
- Turbocharger Function: Ensure the turbocharger is functioning correctly and that there are no leaks in the intake system.

### **2. Overheating**

Overheating can lead to severe engine damage. Recommended checks include:

- Coolant Levels: Ensure the cooling system is filled to the proper level.
- Thermostat Functionality: Test the thermostat to ensure it opens and closes at the correct temperatures.

### **3. Unusual Noises**

Unusual noises may indicate mechanical issues. Potential causes include:

- Lifter Noise: Inspect the valvetrain for proper adjustment and oil flow.
- Bearing Wear: Listen for knocking sounds that could indicate worn bearings.

## **Conclusion**

The **N14 Celect Cummins service manual** is an invaluable resource for anyone

working with this powerful engine. It provides comprehensive information on maintenance procedures, troubleshooting techniques, and safety guidelines. Regular adherence to the service manual will ensure the engine operates efficiently and reliably, extending its lifespan and performance. By understanding the importance of this manual and following its guidelines, technicians can maintain the N14 Celect engine to the highest standards, ensuring optimal performance in all applications.

## **Frequently Asked Questions**

### **What is the purpose of the N14 Celect Cummins service manual?**

The N14 Celect Cummins service manual provides detailed information on the maintenance, troubleshooting, and repair of the N14 Celect engine, ensuring optimal performance and longevity.

### **Where can I find the N14 Celect Cummins service manual?**

The N14 Celect Cummins service manual can be found through authorized Cummins dealerships, online marketplaces, or official Cummins websites that offer downloadable PDF versions.

### **What types of information are included in the N14 Celect Cummins service manual?**

The manual includes specifications, wiring diagrams, recommended maintenance schedules, troubleshooting guides, and detailed repair procedures for various components of the N14 Celect engine.

### **Is the N14 Celect Cummins service manual suitable for DIY repairs?**

Yes, the N14 Celect Cummins service manual is designed to be user-friendly and is suitable for both professional mechanics and DIY enthusiasts, provided they have some mechanical knowledge.

### **How often should I refer to the N14 Celect Cummins service manual?**

It's advisable to refer to the N14 Celect Cummins service manual during regular maintenance, when troubleshooting issues, or before performing any significant repairs to ensure proper procedures are followed.

### **Can the N14 Celect Cummins service manual help with fuel system issues?**

Yes, the N14 Celect Cummins service manual contains specific sections dedicated to diagnosing and repairing fuel system issues, including injector troubleshooting and fuel filter maintenance.

Find other PDF article:

<https://soc.up.edu.ph/09-draft/files?trackid=Oah40-9556&title=bible-commentary-gospel-of-john.pdf>

## **N14 Celect Cummins Service Manual**

Norma Regulamentadora No. 18 (NR-18) - Ministério do Trabalho ...

Oct 22, 2020 · A nova redação da NR-18 entra em vigor um ano após a publicação da Portaria SEPRT n.º 3.733/2020, sendo que para alguns itens a portaria prevê ainda outros prazos ...

### **NORMA REGULAMENTADORA 18 - NR 18**

As aberturas no piso devem: ter fechamento provisório constituído de material resistente travado ou fixado na estrutura; ou ser dotada de sistema de proteção contra quedas, de acordo com o ...

NR18: o que é, para que serve, treinamento e versão atualizada ...

Mar 9, 2022 · Em resumo, a NR 18 determina as diretrizes sobre as condições de trabalho na indústria e na construção civil. Como resultado, ela direciona empregadores e empregados ...

### **18 (TRADUÇÃO) - One Direction - LETRAS.MUS.BR**

One Direction - 18 (tradução) (Letra e música para ouvir) - I have loved you since we were eighteen / Long before we both thought the same thing / To be loved and to be in love / And all ...

### **NR-18 Atualizada: Guia Completo Sobre Segurança na ... - Engehall**

A Norma Regulamentadora 18, ou NR-18, é um conjunto de diretrizes obrigatórias estabelecidas pelo Governo Brasileiro, especificamente voltadas para garantir condições de trabalho ...

DDD 18: Qual cidade e estado tem o DDD 18?

O DDD 18 abrange cidades do estado São Paulo. Confira qual estado, a lista de todas as cidades e como fazer ligações com DDD 18.

*NR 18: o que você precisa saber sobre esta norma ... - Previnsa*

Quais são os aspectos em que a NR 18 se pauta? Para você entender melhor como a norma funciona, vamos aprofundar um pouco mais em seu funcionamento, a partir da separação das ...

### **NR 18: o que diz a norma e porque aplicar na empresa! - Pontotel**

A norma regulamentadora NR 18 estabelece diretrizes de administração, de planejamento e de organização, relacionadas ao setor da construção civil. Além disso, ela também é responsável ...

*Donde assistir 18 Outra Vez - ver séries online - JustWatch*

Descubra como e onde assistir "18 Outra Vez" online na Netflix, Prime Video e Disney+ hoje - incluindo opções 4K e grátis.

### **12 coisas que você precisa saber sobre ter 18 anos - GameVicio**

Jan 10, 2015 · Saiba o que vai mudar e o que vai continuar igual na sua vida quando você atingir a maioridade. Ah! Chegou a hora! Finalmente você fez 18 anos e a vida vai mudar para ...

### **ULINE - Shipping Boxes, Shipping Supplies, Packaging Materials, P...**

Uline stocks over 43,000 shipping boxes, packing materials, warehouse supplies, material handling

and more. Same day ...

### **All Products - ULINE**

Browse all of the products Uline stocks including shipping boxes, packing materials, mailing supplies, warehouse ...

### **Uline Brand in Stock - ULINE**

Huge Selection of Uline Brand in Stock. Order by 6 pm for same day shipping. Huge Catalog! Over 43,000 products in ...

### *Uline: Sign In*

3 days ago · Sign in to your account for easier checkout and to view order history, check order status, view invoices, and ...

### **Uline Online Catalog**

Check out our interactive digital publication, powered by Dirxion

Unlock the full potential of your N14 Celect Cummins engine with our comprehensive service manual. Learn more about maintenance tips and troubleshooting today!

[Back to Home](#)