

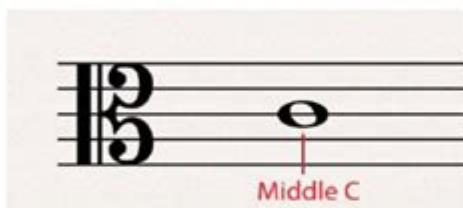
Musical Words Bass Clef 2 Answer Key

The bass clef

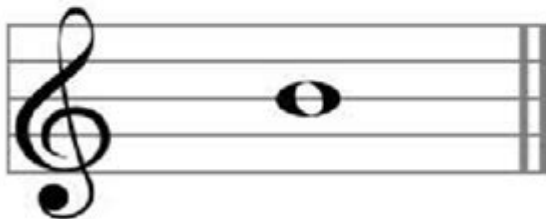
For you to know what a bass clef is you must know first “what is a clef?”

Whatever reason you're here, you've probably seen the 5 lines on which musical notes sit, this is called the “the stave”. until the clef is placed at the very beginning of the stave we do not know what to call the notes placed on the stave.

For example, this note is C if I used this clef (called alto)



However, it is called a B note if I used this clef (called treble)



Musical Words Bass Clef 2 Answer Key is an essential tool for music educators and students navigating the complexities of music theory. Understanding the bass clef is crucial for musicians, especially those who play lower-pitched instruments or sing bass lines. This article delves into the intricacies of the bass clef, its relevance in music education, and provides insights into the answer key for common exercises related to musical words in the bass clef.

Understanding the Bass Clef

The bass clef, also known as the F clef, is one of the two most common clefs

used in Western music notation. It is primarily utilized for lower-pitched instruments such as the bass guitar, cello, tuba, and bassoon, as well as for the left hand in piano music.

What is the Bass Clef?

The bass clef is characterized by its distinctive symbol, which resembles a stylized letter 'F' with two dots placed above and below the fourth line of the staff. The fourth line represents the note F, while the notes on the lines and spaces of the bass clef staff correspond to specific pitches:

- Lines: G, B, D, F, A (from bottom to top)
- Spaces: A, C, E, G (from bottom to top)

Understanding these notes is fundamental for reading music written in the bass clef.

Importance of the Bass Clef in Music

The bass clef plays a significant role in various genres of music, including classical, jazz, and contemporary. Here are some reasons why the bass clef is essential:

1. **Foundation of Harmony:** The bass clef provides the harmonic foundation in a piece of music, often outlining the chord progressions that support the melody.
2. **Instrument Specificity:** Many instruments are tuned to play in the bass clef, making it vital for composers and musicians who work with orchestras or bands.
3. **Voice Types:** In choral music, the bass clef is crucial for bass and baritone singers, allowing them to read their parts accurately.

Musical Words in the Bass Clef

Musical words that relate to the bass clef often involve terminology used in exercises that help students learn to read and write music. These exercises may include identifying notes, understanding rhythms, and interpreting musical symbols.

Common Exercises for Learning the Bass Clef

When teaching the bass clef, educators often employ a variety of exercises. Here are some common types:

- Note Identification: Students practice identifying notes on the bass clef staff.
- Rhythm Exercises: Counting and clapping out rhythms to reinforce timing.
- Transposition: Moving melodies from treble to bass clef and vice versa.
- Ear Training: Developing the ability to recognize pitches and intervals by ear.

Musical Words Exercise Example

A typical musical words exercise might involve filling in the blanks or matching terms with their definitions. For example, students may be asked to write the correct note names for given bass clef notes or to define terms such as “staccato” or “legato.”

The Answer Key for Bass Clef Exercises

The answer key is a crucial component of any educational exercise. It not only provides the correct answers but also helps educators assess students' understanding of the concepts presented.

Components of a Bass Clef Answer Key

When creating or using an answer key for bass clef exercises, consider including the following components:

1. Clear Formatting: Use a clean, easy-to-read format that allows for quick reference.
2. Notes and Definitions: Include both the correct note names and their corresponding definitions.
3. Detailed Explanations: Offer explanations for why certain answers are correct to enhance understanding.
4. Visual Aids: Incorporate diagrams or images of the bass clef staff to illustrate points clearly.

Sample Answer Key for a Musical Words Exercise

Here's a sample answer key for a simple musical words exercise focused on the bass clef:

- Exercise: Identify the notes on the bass clef staff.
- Answers:
 - Line 1: G
 - Line 2: B

- Line 3: D
- Line 4: F
- Line 5: A
- Space 1: A
- Space 2: C
- Space 3: E
- Space 4: G

Definitions:

- Staccato: A style of playing or singing where the notes are short and detached.
- Legato: A smooth and connected style of playing or singing.

Utilizing the Bass Clef Answer Key in Education

The bass clef answer key serves multiple purposes in a music education setting. Here are some effective ways to utilize it:

Assessment Tool

Teachers can use the answer key to assess students' progress and understanding of the bass clef. By grading exercises, educators can identify areas where students may need additional support.

Self-Study Resource

For students, the answer key acts as a self-study resource. They can check their work independently, allowing them to learn from mistakes and reinforce their understanding.

Encouraging Peer Learning

By sharing the answer key among students, educators can encourage collaborative learning. Students can work together to compare answers and discuss concepts, fostering a deeper understanding of the material.

Conclusion

In conclusion, the **musical words bass clef 2 answer key** is a vital resource for both instructors and students in the realm of music education. Understanding the bass clef is not only critical for reading music but also

for developing a well-rounded musical skill set. By utilizing effective exercises and answer keys, educators can help students master the intricacies of the bass clef, paving the way for their musical success. Whether you are a teacher, a student, or a music enthusiast, grasping the fundamentals of the bass clef will undoubtedly enhance your musical journey.

Frequently Asked Questions

What is the bass clef used for in music notation?

The bass clef is used to notate lower-pitched notes, typically played by bass instruments like the cello, bass guitar, and trombone.

How do you identify notes on the bass clef staff?

The notes on the lines of the bass clef staff, from bottom to top, are G, B, D, F, A, and the spaces spell out C, E, G.

What is the significance of the bass clef symbol?

The bass clef symbol, resembling a stylized letter 'F', indicates that the F note is located on the second line from the top of the staff.

What are some common instruments that read music in the bass clef?

Common instruments that read the bass clef include the tuba, bassoon, double bass, and left hand of the piano.

How can beginners practice reading bass clef notes effectively?

Beginners can practice reading bass clef notes by using flashcards, online games, and apps designed to improve music reading skills.

What is the difference between bass clef and treble clef?

The bass clef is used for lower pitches, while the treble clef is used for higher pitches, with different note placements on the staff.

Are there any mnemonic devices for remembering the bass clef notes?

Yes, for the lines: 'Good Boys Do Fine Always' and for the spaces: 'All Cows Eat Grass' are popular mnemonics.

What is an octave in relation to the bass clef?

An octave in relation to the bass clef refers to the interval between one note and another note with double its frequency, spanning 8 diatonic notes.

How is the bass clef related to music theory concepts?

The bass clef is essential in music theory as it helps musicians understand harmony, chord structures, and the relationship between different pitches.

What resources can help with learning about bass clef musical words?

Resources such as music theory books, online courses, and interactive websites focused on music education can greatly assist in learning about bass clef musical words.

Find other PDF article:

<https://soc.up.edu.ph/41-buzz/files?ID=hww60-2064&title=mindfulness-questions-for-kids.pdf>

Musical Words Bass Clef 2 Answer Key

Francia - Wikipedia, la enciclopedia libre

Francia (en francés: France), oficialmente la República Francesa (République française), es un país soberano transcontinental que se extiende por Europa Occidental y por regiones y ...

Francia: cómo es su cultura y sus características

Francia Te explicamos todo sobre este país, cómo es su economía, su religión y su historia. Además, el arte, la literatura y la filosofía en Francia...

Información general de Francia

Francia puede visitarse en cualquier época del año pero los mejores meses son de mayo a junio pues el clima es templado y los precios de alojamiento y restauración son más asequibles que ...

Viaja a Francia y descubre sus maravillas - Explore France

Francia cuenta con paraísos escondidos, paisajes protegidos y riquezas culturales que te encantarán. Ya sea solo, en pareja o en familia, aquí tienes una selección para evadirte.

France - Wikipedia

France, [h] officially the French Republic, [i] is a country primarily located in Western Europe. Its overseas regions and territories include French Guiana in South America, Saint Pierre and ...

Francia | Qué es, características, economía, política, relieve, clima ...

¿Qué es Francia? Francia es un país que se encuentra en el continente europeo, un Estado soberano

que además es miembro de la Unión Europea. Considerado como uno de los ...

Francia - Países del Mundo

Francia es principalmente un país europeo, pero sus territorios de ultramar hacen que pertenezca a varios continentes. La Francia continental se encuentra en Europa, mientras que sus ...

Francia - Población, datos interesantes, moneda, ciudades, ...

Francia, ubicada en el extremo occidental de Europa, cautiva con su rica historia y vibrante cultura. Este fascinante país limita al oeste con la Bahía de Biscay, al noroeste con el Canal ...

Qué Ver y Visitar en Francia - Mejores Alojamientos

Toda la información sobre tu viaje a Francia ¡Pulsa aquí si quieres saber los mejores consejos sobre tu viaje a Francia!

Francia - Wikiwand

Francia, oficialmente la República Francesa, es un país soberano transcontinental que se extiende por Europa Occidental y por regiones y territorios de ultramar...

Home - Florida MV Express - Registration Renewal

Florida MV Express kiosks are like having a DMV near you! Renew vehicle registrations in under 2 minutes!

DMV kiosk in - Find a Kiosk - Florida MV Express

Find an Express Kiosk at a Publix near you and renew your vehicle registration in under 2 minutes. Scan, Pay, Print, Go!

DMV kiosk in - FAQ - Florida MV Express

FAQs - What do you need to renew your vehicle registration at the Florida MV Express kiosk? | Kiosk FAQs to get you in and at the kiosk.

DMV kiosk in - Contact - Florida MV Express

Please call the number listed on the kiosk for any questions regarding a kiosk transaction. Please contact your local county tax collector with questions about your motor vehicle registration or ...

DMV kiosk in - Miami-Dade County Locations

Miami-Dade residents, you can use these self-service Florida MV Express kiosks to renew your vehicle registration. You don't need to take a number or sit and wait; the average DMV kiosk ...

Home - Florida MV Express - Registration Renewal

Skip the line at the Florida DMV. Renew your vehicle registration in under 2 minutes at the MV Express Kiosk! Renew. Print. Go!

Santa Rosa Archives - Florida MV Express

Clearwater FL 33755 [itimpfy_location_short_description address="1663 Gulf to Bay Blvd., Clearwater, FL 33755" hours="Mon - Tue: 8:00 AM - 4:30 PM; Wednesday: 8:30 AM - 4:30 PM; ...

Unlock your understanding of musical words with our Bass Clef 2 answer key! Discover how to enhance your music theory skills. Learn more now!

[Back to Home](#)