

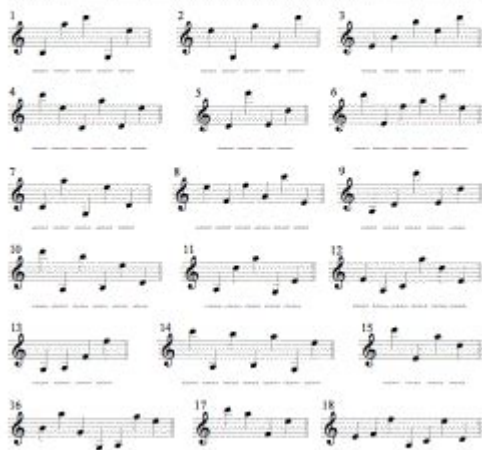
Musical Words Treble Clef 2 Answer Key

Puzzles and Games: 0001

Musical Words - Treble Clef II

Each group of notes spells a word.
Write the word that each group spells.

Example:



Flute® Workbooks, Copyright © 2000 by MusicWorks, Inc.
All rights reserved. No part of this publication may be reproduced, stored in a retrieval system, or transmitted in any form or by any means, electronic, mechanical, photocopying, recording, or by any information storage and retrieval system, without prior written permission from MusicWorks, Inc.

musical words treble clef 2 answer key is a term that resonates with music educators, students, and enthusiasts alike. Understanding musical notation is crucial for anyone looking to delve deeper into the world of music, whether you're a beginner or an experienced musician. The treble clef, also known as the G clef, is one of the most important symbols in music notation, providing a foundation for reading and writing music. In this article, we will explore the treble clef, its significance, and how to decipher musical words related to it, all while providing you with an answer key to enhance your learning experience.

Understanding the Treble Clef

The treble clef is a symbol placed at the beginning of a staff, which consists of five lines and four spaces. This clef indicates that the notes in this staff are to be played in a higher pitch range. The treble clef is commonly used for instruments like the flute, violin, trumpet, and for the right hand of the piano.

The Symbol of the Treble Clef

The treble clef symbol resembles an ornate letter “G” and curls around the second line of the staff. This line represents the note G, hence the name G clef. Here are some key points about the treble clef:

- Positioning: The treble clef is placed at the beginning of the staff, establishing the pitch of the notes that follow.
- Notes on the Lines: The lines of the treble clef staff, from bottom to top, represent the notes E, G,

B, D, and F.

- Notes in the Spaces: The spaces represent the notes F, A, C, and E.

Importance of Learning Musical Words

Understanding musical words associated with the treble clef is essential for effective communication in music. Musical terminology allows musicians to interpret written music accurately and convey their ideas with precision.

Common Musical Words in Treble Clef

Here are some common musical terms you may encounter when studying the treble clef:

- Note: A symbol representing a musical sound.
- Staff: The set of five lines and four spaces on which music is written.
- Clef: A symbol that defines the pitch of the notes on the staff.
- Ledger Line: A short line added above or below the staff to extend its range.
- Piano: A musical term meaning to play softly.
- Forte: A term indicating to play loudly.

Deciphering Musical Words: Treble Clef 2 Answer Key

When studying musical words related to the treble clef, students often encounter exercises designed to reinforce their understanding. These exercises may include filling in the blanks, matching terms, or identifying notes on the staff. Below are examples of common exercises followed by an answer key.

Example Exercises

1. Fill in the Blanks:

- The treble clef indicates that the notes are played in the _____ range.
- The note located on the second line of the treble clef staff is _____.

2. Match the Terms:

- Match the musical term to its definition:
- A. Clef
- B. Note
- C. Staff
- D. Ledger Line
- 1. A symbol that defines the pitch of notes
- 2. A symbol representing a musical sound
- 3. The set of lines and spaces for writing music
- 4. A line that extends the range of the staff

3. Identify Notes:

- Given the following treble clef staff, identify the notes on each line and space.

Answer Key

1. Fill in the Blanks:

- The treble clef indicates that the notes are played in the higher range.
- The note located on the second line of the treble clef staff is G.

2. Match the Terms:

- A. Clef - 1
- B. Note - 2
- C. Staff - 3
- D. Ledger Line - 4

3. Identify Notes:

- The notes on the lines from bottom to top are E, G, B, D, F.
- The notes in the spaces from bottom to top are F, A, C, E.

Practical Applications of the Treble Clef

Understanding the treble clef is not just an academic exercise; it has practical applications for musicians. Here are some ways to apply your knowledge:

For Instrumentalists

- Reading Music: Musicians must be able to read treble clef notation to perform pieces accurately.
- Transposition: Many instruments are tuned to different keys, making it essential to understand how to transpose music written in treble clef.

For Vocalists

- Sight Singing: Vocalists often need to read music in the treble clef for various genres, including classical and contemporary.
- Understanding Vocal Ranges: Knowing how to read treble clef helps singers identify their vocal range and select appropriate repertoire.

For Composers and Arrangers

- Creating Scores: Composers use the treble clef to write melodies and harmonies for various instruments.

- Arranging Music: Understanding musical words and notation helps in arranging pieces for different ensembles.

Conclusion

In summary, understanding the **musical words treble clef 2 answer key** is vital for anyone interested in music. The treble clef serves as a foundational element in music notation, allowing musicians to read, write, and perform music effectively. By familiarizing yourself with the common terms and practicing exercises, you can enhance your musical literacy and improve your overall musicianship. Whether you're a student, educator, or aspiring musician, mastering the treble clef will undoubtedly enrich your musical journey.

Frequently Asked Questions

What is the purpose of the treble clef in musical notation?

The treble clef indicates the pitch of the notes on the staff, primarily for higher sounding instruments and voices.

What are the lines of the treble clef staff from bottom to top?

The lines are E, G, B, D, and F.

What are the spaces of the treble clef staff from bottom to top?

The spaces are F, A, C, and E.

How can one remember the notes on the lines of the treble clef?

One common mnemonic is 'Every Good Boy Does Fine'.

What is a common mnemonic to remember the space notes in the treble clef?

The spaces spell out the word 'FACE'.

Which instruments typically use the treble clef?

Instruments like the flute, clarinet, trumpet, and violin typically use the treble clef.

How does the treble clef symbol look?

The treble clef symbol resembles a stylized letter 'G' and encircles the second line of the staff.

Can the treble clef also indicate other octaves for lower instruments?

Yes, some lower instruments may use treble clef but in different octaves, such as the guitar.

What is the significance of the treble clef for vocal music?

The treble clef is often used for soprano and alto vocal parts, indicating higher pitches.

Where is the treble clef placed on the staff?

The treble clef is placed on the second line of the staff, which represents the note G.

Find other PDF article:

<https://soc.up.edu.ph/26-share/files?docid=hwd55-7405&title=hand-therapy-for-stroke-patients.pdf>

Musical Words Treble Clef 2 Answer Key

TikTok - Make Your Day

TikTok - trends start here. On a device or on the web, viewers can watch and discover millions of personalized short videos. Download the app to get started.

TikTok - Aplicaciones en Google Play

TikTok es una comunidad global de videos cortos. Con esta app podrás descubrir, crear y editar videos increíbles, y compartirlos fácilmente con tus amigos y el mundo entero.

TikTok

Feedback and help Go back **WEAVER [encountered server side rendering error] WEAVER** By continuing, you agree to TikTok's Terms of Service and confirm that you have read TikTok's ...

Descarga TikTok para Android

TikTok Lite es una aplicación alternativa para disfrutar de TikTok en tu dispositivo móvil, pero que cuenta con menos funciones con el fin de optimizar el rendimiento y ahorrar almacenamiento.

Iniciar sesión | TikTok

Log in or sign up for an account on TikTok. Start watching to discover real people and real videos that will make your day.

TikTok - Wikipedia, la enciclopedia libre

TikTok, cuya contraparte en China es Douyin (Chino: 抖音; pinyin: Dǒuyīn), es una red social de origen chino para compartir videos cortos y en formato vertical propiedad de la empresa china ...

Iniciar sesión | TikTok

Log in or sign up for an account on TikTok. Start watching to discover real people and real videos that will make your day.

About | TikTok

TikTok es la plataforma más importante del mundo para videos cortos en dispositivos móviles. Nuestra misión consiste en capturar y compartir la creatividad, los conocimientos y los ...

TikTok - Make Your Day

TikTok es una plataforma para videos cortos en dispositivos móviles. Nuestra misión consiste en capturar y compartir la creatividad, los conocimientos y los mejores momentos de la vida de ...

TikTok - Apps en Google Play

TikTok es EL destino de videos móviles. En TikTok, los videos de formato corto son emocionantes, espontáneos y genuinos. Si eres un fanático de los deportes, un entusiasta de ...

Testing for COVID-19 | COVID-19 | CDC

Mar 10, 2025 · Getting a COVID-19 test Buy self-tests (at-home tests) Buy self-tests (at-home tests) online or in pharmacies and retail stores. If you have health insurance, it may reimburse ...

Overview of Testing for SARS-CoV-2 | COVID-19 | CDC

Aug 29, 2024 · This overview describes current information on the types of tests used to detect SARS-CoV-2 infection and their intended uses. This information is intended for use by ...

Laboratory Testing for Epstein-Barr Virus (EBV)

Apr 10, 2024 · Laboratory testing can help distinguish whether someone is susceptible to EBV infection or has a recent or past infection. Healthcare providers can test for antibodies to ...

Clinical Testing and Diagnosis for Tuberculosis

Apr 17, 2025 · For more details on interpreting TB skin test results, please visit Clinical Testing Guidance for Tuberculosis: Tuberculin Skin Test. TB skin results should only be read by a ...

Laboratory Testing for CMV and Congenital CMV

Apr 15, 2024 · The enzyme-linked immunosorbent assay is the most common serologic test for measuring antibody to CMV. Congenital CMV infection cannot be diagnosed with antibody ...

Measles Serology Testing | Measles (Rubeola) | CDC

May 9, 2024 · Instructions for blood collection Blood for serologic testing of measles at CDC is collected as described in the Infectious Disease Laboratories Test Directory entry for each ...

Screening for Cervical Cancer | Cervical Cancer | CDC

Feb 26, 2025 · Screening tests The HPV test and the Pap test can help prevent cervical cancer or find it early. The HPV test looks for the virus (human papillomavirus) that can cause cell ...

Clinical Testing and Diagnosis for Lyme Disease

May 15, 2024 · Laboratory diagnosis of Lyme disease relies on serologic testing for antibodies to *Borrelia burgdorferi*. CDC recommends a two-step serologic testing process using FDA ...

Clinical Testing and Diagnosis for CDI | C. diff | CDC

Mar 6, 2024 · This is the most sensitive test available and is most often associated with false-positive results because of the presence of nontoxigenic *C. diff* strains. However, testing ...

Laboratory Testing for Measles | Measles (Rubeola) | CDC

Jun 12, 2024 · Specimen collection CDC's Infectious Diseases Laboratories provide guidance for various specimen collection, storage, and shipment, including for measles. Refer to the ...

Unlock the secrets of musical words with our Treble Clef 2 answer key! Enhance your music knowledge today. Learn more to master your musical skills!

[Back to Home](#)