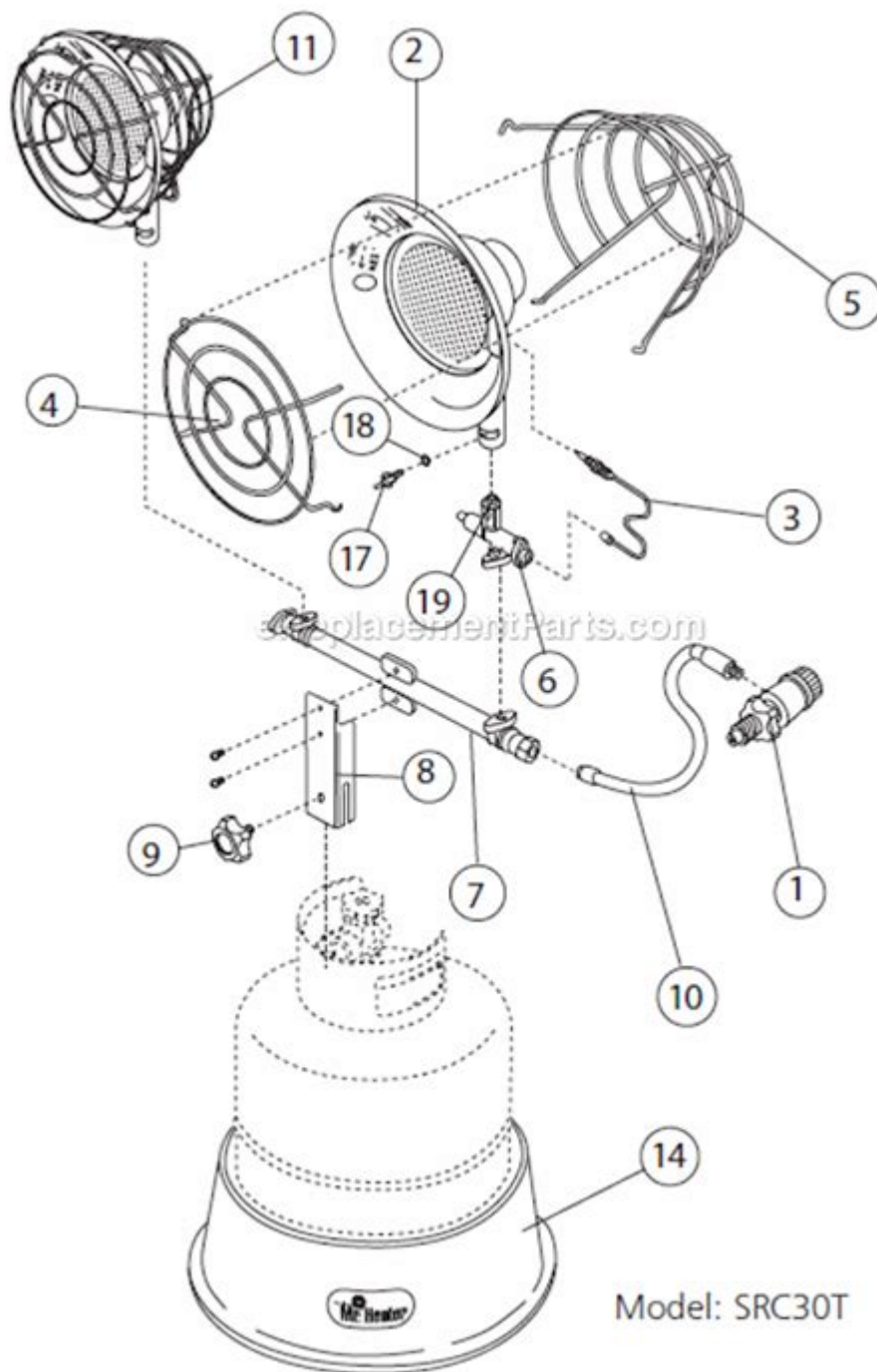


Mr Heater Parts Diagram



Mr Heater parts diagram is an essential resource for anyone looking to understand, maintain, or repair their Mr. Heater products effectively. Whether you own a portable heater, a garage heater, or any other type of Mr. Heater appliance, having a clear visual representation of the parts can significantly simplify the troubleshooting process. In this article, we'll explore the components of Mr. Heater products, the importance of understanding the parts diagram, and how to use it for maintenance and repairs.

Understanding Mr Heater Products

Mr. Heater is a well-known brand that specializes in manufacturing portable and fixed heating solutions for residential and commercial use. Some of their popular products include:

- Portable propane heaters
- Infrared heaters
- Natural gas heaters
- Garage heaters

Each of these products has its unique functionality and design, but they all share a common need for maintenance and occasional repairs. The Mr Heater parts diagram serves as a crucial tool for users to identify and understand the various components.

Importance of a Parts Diagram

Having a Mr Heater parts diagram is vital for several reasons:

1. Simplifies Repairs

When a heater malfunctions, knowing the specific parts involved can simplify the repair process. A parts diagram allows users to visually locate components, making it easier to identify which parts may need replacement.

2. Enhances Safety

Heaters can pose safety risks if not maintained properly. By understanding the parts and their functions, users can ensure that their heaters are operating safely and efficiently. Knowing the components can also help users pinpoint issues that could lead to hazardous situations, such as gas leaks or overheating.

3. Cost-Effective Maintenance

Understanding how to maintain your heater can save you money. With a Mr Heater parts diagram, users can perform basic maintenance tasks, such as cleaning or replacing filters, without needing to call in a professional. This not only reduces service costs but also extends the life of the heater.

4. Informed Purchases

If you know the parts of your heater, you can make informed decisions when purchasing replacements or upgrades. A parts diagram will help you identify the exact components you need, ensuring that you buy the right parts for your specific model.

Key Components of Mr Heater Products

While the specific components may vary depending on the type of heater, several key parts are common across most Mr. Heater products. Here are some of the most important components you might find on a Mr Heater parts diagram:

- **Burner Assembly:** This is responsible for the combustion of fuel and is critical for heating efficiency.
- **Thermocouple:** A safety device that detects the presence of a flame. If the flame goes out, the thermocouple shuts off the gas supply.
- **Regulator:** This part controls the flow of gas to the burner, ensuring the heater operates at the correct pressure.
- **Igniter:** The igniter is responsible for creating a spark that lights the gas. It can be electronic or piezoelectric.
- **Fan Motor:** In models that use a fan for circulation, the fan motor is essential for distributing heat throughout the space.
- **Heat Exchanger:** This component transfers heat from the combustion process to the air being circulated in the room.
- **Control Knob:** This allows users to adjust the temperature settings and turn the heater on and off.

How to Read a Mr Heater Parts Diagram

Understanding how to read a Mr Heater parts diagram is crucial for efficient repairs and maintenance. Here are some steps to help you navigate through a parts diagram effectively:

1. Locate the Model Number

Every Mr. Heater product has a model number which is typically found on the unit itself. This number is vital for identifying the correct parts diagram. Ensure you have this information before proceeding.

2. Identify the Sections

Most parts diagrams are divided into sections based on the functionality of components. For instance, you may find sections for the fuel system, electrical components, and the heating mechanism. Take note of these sections as they can help you narrow down your search for specific parts.

3. Analyze the Labels

Parts diagrams often have labeled numbers or letters corresponding to the various components. These labels usually come with a key or legend that provides the part names. Familiarize yourself with these labels to easily reference the components.

4. Cross-Reference with the Manual

Your heater will come with a user manual that may contain additional information about the parts and their functions. Cross-referencing the parts diagram with the manual can provide further insights into the specific roles of each component.

Common Issues and Solutions

Understanding the parts diagram can help you troubleshoot common issues. Here are some frequent problems and possible solutions:

1. Heater Won't Start

- Possible Causes:
- Faulty igniter
- Empty gas tank
- Clogged burner assembly
- Solutions:
- Check the igniter for functionality and replace if necessary.
- Ensure the gas tank is full and properly connected.
- Clean or replace the burner assembly.

2. Inconsistent Heating

- Possible Causes:
- Malfunctioning fan motor
- Dirty heat exchanger
- Solutions:
- Inspect the fan motor for operation and replace if defective.
- Clean the heat exchanger to improve efficiency.

3. Gas Leak

- Possible Causes:
- Loose connections
- Damaged regulator
- Solutions:
- Check all connections for tightness and reseal if necessary.
- Inspect the regulator for damage and replace if needed.

Where to Find Mr Heater Parts Diagrams

Finding the correct Mr Heater parts diagram is essential for effective repairs. Here are some reliable sources:

- **Official Mr Heater Website:** The manufacturer's website often has resources, including parts diagrams and manuals.
- **User Manuals:** The manual that comes with your heater typically includes a parts diagram.
- **Online Retailers:** Websites that sell Mr Heater products often have parts diagrams available for reference.
- **Heater Repair Forums:** Online communities and forums can be excellent resources for finding diagrams and getting advice from other users.

Conclusion

A Mr Heater parts diagram is an invaluable tool for anyone who owns a Mr. Heater product. It simplifies repairs, enhances safety, and allows for cost-effective maintenance. By understanding the key components and how to read the diagram, users can troubleshoot common issues and perform necessary repairs with confidence. Whether you're a seasoned DIYer or a novice, having access to a parts diagram can empower you to keep your heating solutions running smoothly and efficiently.

Frequently Asked Questions

What is a Mr. Heater parts diagram used for?

A Mr. Heater parts diagram is used to identify and locate specific components of Mr. Heater products, helping users understand how the heater is assembled and where to find replacement parts.

Where can I find a Mr. Heater parts diagram?

You can find a Mr. Heater parts diagram on the official Mr. Heater website, in the product manual, or through third-party repair websites and forums.

How do I read a Mr. Heater parts diagram?

To read a Mr. Heater parts diagram, familiarize yourself with the labeling of parts, which are often numbered or named; refer to the accompanying legend or list for detailed descriptions.

Are Mr. Heater parts diagrams available for all models?

Most popular Mr. Heater models have parts diagrams available, but older or discontinued models may have limited resources; checking the model number can help narrow down searches.

Can I order replacement parts using the Mr. Heater parts diagram?

Yes, once you identify the parts you need from the Mr. Heater parts diagram, you can order them directly from the official website or authorized dealers.

What should I do if I can't find a specific part in the Mr. Heater parts diagram?

If you can't find a specific part in the Mr. Heater parts diagram, consider reaching out to customer service for assistance or checking with local retailers for compatibility.

Is it safe to replace parts on my Mr. Heater using the parts diagram?

Yes, it is generally safe to replace parts on your Mr. Heater using the parts diagram, but it's essential to follow safety guidelines and ensure the heater is unplugged or turned off before making any repairs.

Are there any videos available for understanding Mr. Heater parts diagrams?

Yes, many users and professionals create video tutorials that explain how to understand and utilize Mr. Heater parts diagrams; these can often be found on platforms like YouTube.

What common parts can be found in a Mr. Heater parts diagram?

Common parts in a Mr. Heater parts diagram include burners, ignitors, thermostats, gas valves, and fans, among others.

How often should I refer to the Mr. Heater parts diagram during maintenance?

It's a good practice to refer to the Mr. Heater parts diagram during annual maintenance or when experiencing issues to ensure all components are functioning correctly and to aid in troubleshooting.

Find other PDF article:

Mr Heater Parts Diagram

DrMrMissMrsMs. _

2 Mr. MisterMr Green Mr Smith.

3Miss. ...

VRARMR -

MRmixed Reality ARVR MR

MRAR -

MRAR MR AR

MRCT _

Dec 11, 2024 · MRCT MR

2025XRARVRMR ...

May 17, 2025 · 3 MR MR ARAR

Mrsir -

1 Mr/Mrs/Miss, Sir 2 sir

“MC,MR,M+,M-”?

MCMR-M-M+20MMemorize (...

mr -

Jul 17, 2023 · mrmr117-610768844117-610768844, (...

elo mmr -

mmrC eloC mmr

Mr.Poker -

2 days ago · 724+10+T0

DrMrMissMrsMs. _

2 Mr. MisterMr Green Mr Smith.

3Miss. ...

VRARMR -

MRmixed Reality ARVR MR

MRAR -

MRAR MR AR

MRCT_

Dec 11, 2024 · MRCT MR CT

2025XRARVRMR ...

May 17, 2025 · 3 MR MR ARAR

Mrsir -

1 Mr/Mrs/Miss, Sir: 2 sir"

“MC,MR,M+,M-”?

MCMR-M-M+20M

mr -

Jul 17, 2023 · mrmr117-610768844117-610768844, (, , ...

*elo*mmr -

mmrC eloC mmr

Mr.Poker -

2 days ago · 724+10+T0

Explore our comprehensive guide on the Mr Heater parts diagram. Identify components easily and troubleshoot efficiently. Learn more for expert tips and insights!

[Back to Home](#)