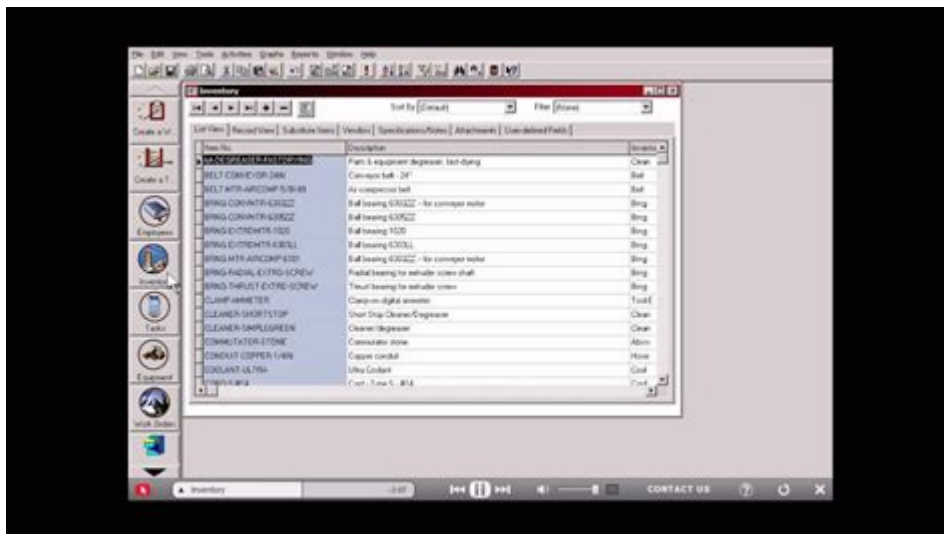


Mp2 Maintenance Software User Manual



MP2 maintenance software user manual is an essential tool for organizations looking to streamline their maintenance operations, improve asset management, and enhance overall productivity. This article serves as a comprehensive guide to understanding and effectively utilizing MP2 maintenance software. We will cover its features, benefits, installation process, and best practices to ensure you get the most out of this powerful tool.

Understanding MP2 Maintenance Software

MP2 maintenance software is designed for businesses to manage their maintenance operations efficiently. It provides a centralized platform that helps organizations track work orders, manage inventory, schedule preventive maintenance, and analyze performance metrics.

Key Features of MP2 Maintenance Software

The MP2 maintenance software comes with a range of features that facilitate effective maintenance management:

1. **Work Order Management:** Users can create, assign, and track work orders effortlessly, ensuring that tasks are completed on time and resources are allocated efficiently.
2. **Preventive Maintenance Scheduling:** The software allows organizations to set up schedules for preventive maintenance tasks, reducing the likelihood of equipment failure and downtime.
3. **Asset Management:** Users can maintain detailed records of assets, including maintenance history, warranties, and manufacturer details, enabling better decision-making.

4. Inventory Control: MP2 provides inventory management tools to track parts and supplies, ensuring that the necessary resources are always available for maintenance tasks.
5. Reporting and Analytics: Users can generate various reports to analyze maintenance performance, identify trends, and make informed decisions to improve operations.
6. Mobile Access: With mobile functionality, users can access the software on-the-go, making it easier to manage maintenance tasks from anywhere.

Benefits of Using MP2 Maintenance Software

Implementing MP2 maintenance software can yield significant benefits for organizations, including:

- Increased Efficiency: By automating routine tasks, MP2 allows maintenance teams to focus on more strategic initiatives, ultimately improving operational efficiency.
- Cost Savings: Preventive maintenance features help organizations avoid costly repairs and unplanned downtime, leading to substantial savings.
- Improved Communication: The software enhances communication between team members, allowing for better collaboration and information sharing.
- Enhanced Reporting: With comprehensive reporting features, organizations can assess their maintenance operations and make data-driven decisions.
- User-Friendly Interface: The intuitive design of MP2 ensures that users can navigate the software easily, minimizing the learning curve and promoting user adoption.

Installation Process of MP2 Maintenance Software

Installing MP2 maintenance software is a straightforward process, but it's essential to follow the steps to ensure a successful setup. Here's how to get started:

System Requirements

Before installation, ensure that your system meets the following requirements:

- Operating System: Windows 10 or later (check for compatibility with other OS versions if needed).
- Processor: Minimum dual-core processor.
- RAM: At least 4 GB.
- Storage: Minimum 500 MB of free space.

- Database: SQL Server (Express, Standard, or Enterprise edition).

Step-by-Step Installation Guide

1. Download the Software: Obtain the MP2 installation file from the official website or authorized distributor.
2. Run the Installer: Locate the downloaded file and double-click to run the installer.
3. Follow the Prompts: The installation wizard will guide you through the installation process. Accept the terms and conditions, and select the desired installation location.
4. Configure Database: Choose the database setup that suits your organization's needs (local or networked). Enter the necessary database credentials.
5. Complete Installation: Once the installation is complete, launch the application to begin configuration.
6. Set Up User Accounts: After launching, create user accounts with appropriate access levels for each team member.

Getting Started with MP2 Maintenance Software

Once the software is installed, it's important to familiarize yourself with its functionality to maximize its potential. Here's how to get started:

Initial Setup

1. Import Existing Data: If you have existing maintenance records, import them into MP2 for continuity.
2. Configure Settings: Adjust system settings according to your organizational needs, including maintenance schedules, user roles, and notification preferences.
3. Set Up Assets: Enter all relevant asset information, including equipment details, maintenance history, and warranty information.

Creating Work Orders

Creating work orders is one of the primary functions of MP2. Follow these steps:

1. Navigate to Work Orders: Click on the 'Work Orders' tab in the main menu.
2. Create New Work Order: Click on the 'New' button to initiate a new work order.
3. Fill in the Details: Enter pertinent information, including the asset

involved, description of the issue, priority level, and assigned technician.
4. Save and Assign: Save the work order and assign it to the appropriate personnel for action.

Best Practices for Using MP2 Maintenance Software

To ensure you are leveraging the full capabilities of MP2 maintenance software, consider the following best practices:

Regular Training and Updates

- Conduct regular training sessions for staff to keep them updated on new features and functionalities.
- Stay informed about software updates and enhancements to maintain optimal performance.

Utilize Reporting Features

- Frequently generate reports to monitor maintenance performance and identify areas for improvement.
- Use analytics to forecast future maintenance needs and budget accordingly.

Encourage User Feedback

- Foster an environment where users can provide feedback on the software's functionality.
- Regularly assess user suggestions to improve processes and enhance the software experience.

Maintain Data Integrity

- Regularly back up your data to prevent loss due to system failures.
- Ensure that all entries in the software are accurate and up-to-date to maintain data integrity.

Troubleshooting Common Issues

Even with a robust software solution like MP2, users may encounter issues. Here are some common problems and their resolutions:

Login Issues

- Resolution: Ensure that the username and password are correct. If forgotten, use the password recovery feature.

Slow Performance

- Resolution: Check system requirements and ensure that your hardware meets the necessary specifications. Consider upgrading RAM or storage if needed.

Data Import Errors

- Resolution: Verify that the data format matches the expected input criteria. Correct any inconsistencies before importing.

Conclusion

The MP2 maintenance software user manual serves as a vital resource for organizations looking to optimize their maintenance processes. By understanding the software's features, following the installation guide, and implementing best practices, you can significantly enhance your maintenance management capabilities. Embracing the full potential of MP2 will not only streamline operations but also contribute to the overall success of your organization.

Frequently Asked Questions

What is MP2 maintenance software used for?

MP2 maintenance software is used for managing maintenance operations, including work order management, asset tracking, inventory management, and preventive maintenance scheduling.

Where can I find the user manual for MP2 maintenance software?

The user manual for MP2 maintenance software can typically be found on the official website of the software provider or within the software installation

directory under 'Help' or 'Documentation'.

How do I navigate the MP2 maintenance software user manual?

You can navigate the MP2 user manual by using the table of contents, index, or search function to find specific topics related to software features and functionalities.

What troubleshooting tips are provided in the MP2 user manual?

The MP2 user manual provides troubleshooting tips for common issues such as login problems, software performance slowdowns, and errors during data entry or reporting.

Can I access the MP2 maintenance software user manual online?

Yes, the MP2 maintenance software user manual is often available in a PDF format for download or accessible online through the software provider's support portal.

Are there any video tutorials related to the MP2 user manual?

Yes, many software providers offer video tutorials that complement the MP2 user manual, providing visual guidance on using various features effectively.

What are the key sections included in the MP2 maintenance software user manual?

Key sections in the MP2 user manual typically include installation instructions, user interface overview, detailed feature descriptions, maintenance procedures, and troubleshooting guidance.

Find other PDF article:

<https://soc.up.edu.ph/22-check/Book?docid=pmX74-1976&title=fighters-history-ryoko.pdf>

Mp2 Maintenance Software User Manual

HF DFT -

HF post-HF MP2 DFT ...

Mali,Gpu -

2mp22 2 :2860,48304820, 6450 :
...

MP3,MP1,MP2,MP4.

Apr 4, 2010 · MP3,MP1,MP2,MP4 MP3MpegAudioLayer3MP4MPEG4MP3MP4MP ...

-

Apr 14, 2018 · HFMP2HFDFTM06-2 X
B3LYP DFT ...

-

DFTMP2 RI (resolution-of-identity
density fitting) ...

- mp2MPEG2.

Feb 4, 2016 · MP2MP3CD.wav
...

mp3 -

NetEasyMusic ncm
...

Unlock the full potential of MP2 maintenance software with our comprehensive user manual. Learn more to streamline your operations and enhance efficiency today!

[Back to Home](#)