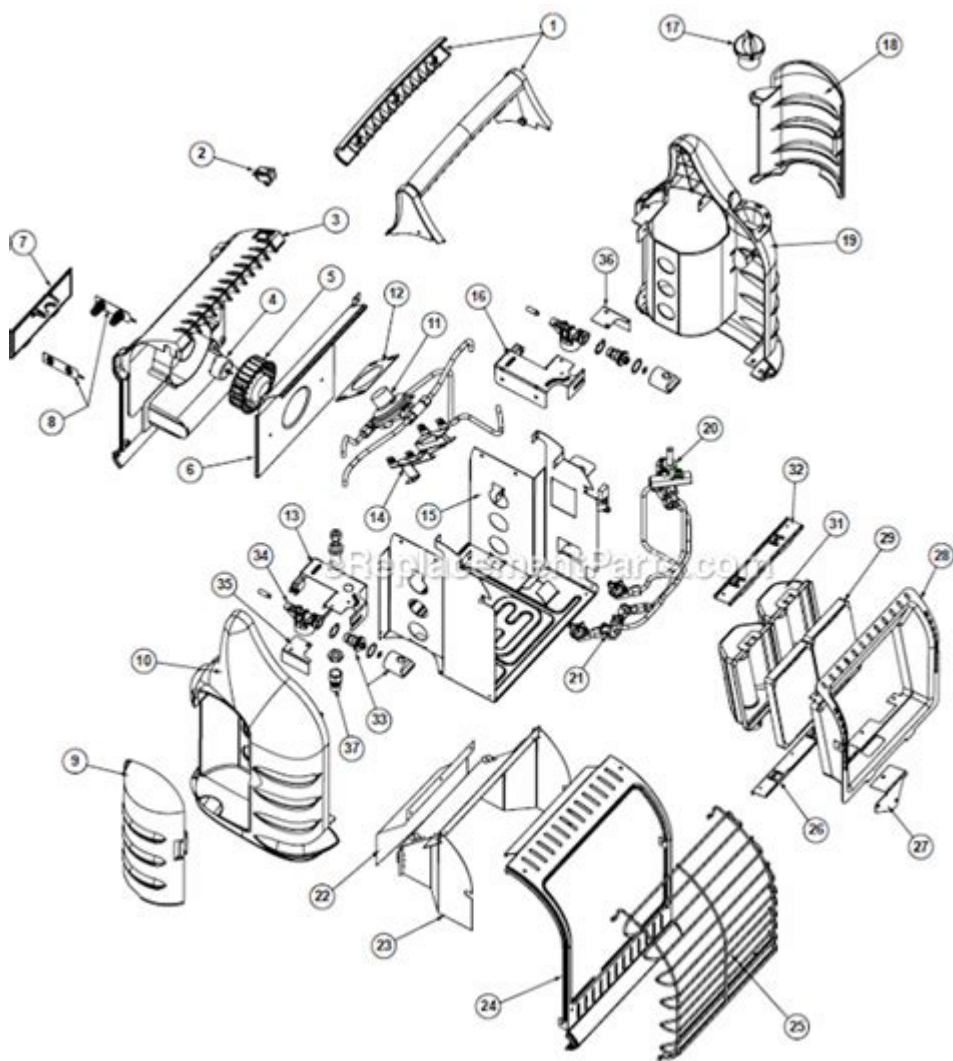


# Mr Heater Buddy Parts Diagram



**Mr Heater Buddy parts diagram** is an essential resource for anyone looking to understand the inner workings of this popular portable heater. Whether you're using it for camping, hunting, or as a supplemental heat source in your home, having a comprehensive understanding of the parts can help you troubleshoot problems, perform maintenance, and ensure safe operation. This article will delve into the various components of the Mr Heater Buddy, how they function, and where you can find a detailed parts diagram.

## Understanding the Mr Heater Buddy

The Mr Heater Buddy is a well-known propane heater that is favored for its portability and efficiency. It is designed for both indoor and outdoor use, making it a versatile option for various heating needs. To maximize the heater's performance and safety, knowing its components is crucial.

# Key Features of Mr Heater Buddy

Before diving into the parts diagram, let's highlight some key features of the Mr Heater Buddy:

- Portable Design: Lightweight and easy to carry.
- Safety Features: Includes an oxygen depletion sensor and tip-over switch.
- Multiple Heat Settings: Adjustable heat output for different environments.
- Propane Fuel: Uses standard 1 lb. propane cylinders or can be adapted for larger tanks.

## Parts of the Mr Heater Buddy

To better understand the Mr Heater Buddy parts diagram, we will break down the major components of the heater. Each part plays a vital role in the heater's functionality.

### 1. Burner Assembly

The burner assembly is where the propane is ignited to produce heat. It typically consists of:

- Burner Head: Where the flame is produced.
- Burner Tube: Connects the burner head to the gas supply.

### 2. Gas Control Valve

The gas control valve regulates the flow of propane to the burner. It includes:

- Knob: Allows the user to adjust the flame height.
- Safety Shut-off: Automatically stops gas flow if the flame goes out.

### 3. Ignition System

The ignition system is responsible for lighting the propane. Components include:

- Piezo Igniter: Creates a spark to ignite the gas.
- Electrode: Conducts the spark to the burner.

### 4. Heat Exchanger

The heat exchanger is essential for transferring heat from the burner to the surrounding air. It consists of:

- Fins: Increase the surface area to enhance heat transfer.
- Casing: Houses the heat exchanger and protects it from debris.

## 5. Safety Sensors

Safety sensors ensure that the heater operates safely. Key sensors include:

- Oxygen Depletion Sensor (ODS): Shuts off the heater if oxygen levels are too low.
- Tip-Over Switch: Turns off the heater if it is knocked over.

## 6. Housing and Grille

The housing protects internal components and helps direct heat. It includes:

- Outer Shell: Made of durable materials to withstand outdoor conditions.
- Grille: Allows heat to flow into the room while protecting users from direct flame contact.

## Mr Heater Buddy Parts Diagram

A parts diagram is an invaluable tool for identifying and understanding each component of the Mr Heater Buddy. While we cannot provide a visual diagram here, you can typically find a detailed parts diagram in the user manual or on the manufacturer's website. Here's how to locate it:

1. Visit the Manufacturer's Website: Go to the Mr Heater website and navigate to the support or resources section.
2. Download the User Manual: Most manuals include a parts diagram.
3. Contact Customer Support: If you can't find the diagram, contacting customer support can provide you with the necessary information.

## Common Issues and Troubleshooting

Understanding the parts of your Mr Heater Buddy can help you troubleshoot common issues. Here are some frequent problems and their potential solutions:

### 1. Heater Won't Ignite

- Check the Gas Supply: Ensure the propane tank is full and properly connected.
- Inspect the Ignition System: Make sure the piezo igniter is functioning correctly.

## 2. Uneven Heating

- Clean the Burner Assembly: Debris can block the burner, affecting heat distribution.
- Adjust the Gas Control Valve: Make sure it's set to the desired level.

## 3. Frequent Shut-Offs

- Test the ODS: If the oxygen depletion sensor is faulty, it may need replacement.
- Inspect for Drafts: Ensure the heater is not placed in an area with excessive airflow.

## Maintenance Tips for Mr Heater Buddy

Regular maintenance can extend the life of your heater and ensure safe operation. Here are some tips:

- Clean the Burner Assembly: Remove dirt and debris regularly.
- Check Connections: Ensure all gas connections are tight and leak-free.
- Inspect Safety Sensors: Regularly test the ODS and tip-over switch for functionality.
- Store Properly: When not in use, store the heater in a dry place to prevent rust.

## Replacement Parts and Where to Buy

If you need to replace any parts of your Mr Heater Buddy, you can find them at various locations:

- Manufacturer's Website: The best place to find authentic replacement parts.
- Local Hardware Stores: Many carry parts for popular heating products.
- Online Retailers: Websites like Amazon or eBay often have parts available.

## Conclusion

In conclusion, understanding the Mr Heater Buddy parts diagram is crucial for anyone who owns this versatile heater. By familiarizing yourself with its components, you can troubleshoot issues, perform necessary maintenance, and ensure a safe heating experience. Always refer to the user manual for detailed diagrams and information, and don't hesitate to reach out to customer support for assistance. With proper care and knowledge, your Mr Heater Buddy can provide reliable warmth for years to come.

## Frequently Asked Questions

## **What is a Mr. Heater Buddy parts diagram used for?**

A Mr. Heater Buddy parts diagram is used to identify and locate various components of the heater for maintenance, repair, or replacement.

## **Where can I find a Mr. Heater Buddy parts diagram?**

You can find a Mr. Heater Buddy parts diagram on the official Mr. Heater website, in the product manual, or through online retailers that sell the heater.

## **Are there different parts diagrams for different models of Mr. Heater Buddy?**

Yes, each model of Mr. Heater Buddy may have its own specific parts diagram due to variations in design and components.

## **How can I use the parts diagram to troubleshoot my Mr. Heater Buddy?**

You can use the parts diagram to identify the components that may be malfunctioning and guide you in checking or replacing them.

## **Can I download a Mr. Heater Buddy parts diagram in PDF format?**

Yes, many parts diagrams are available for download in PDF format on the manufacturer's website or through service manuals.

## **What should I do if I can't find the parts diagram for my Mr. Heater Buddy?**

If you can't find the parts diagram, you can contact Mr. Heater customer service for assistance or check with local appliance repair shops.

## **Are there online forums or communities that discuss Mr. Heater Buddy parts and diagrams?**

Yes, there are various online forums and communities where users share information, including parts diagrams and repair tips for Mr. Heater Buddy.

Find other PDF article:

<https://soc.up.edu.ph/58-view/pdf?trackid=wxj77-6753&title=the-cell-cycle-coloring-worksheet-questions-answers.pdf>

# Mr Heater Buddy Parts Diagram

DrMrMissMrsMs. \_

2 Mr. MisterMr Green ...

VRARMR -

MRmixed Reality ARVR ...

MRAR -

MRAR MR ...

MRCT\_

Dec 11, 2024 · MRCTMR ...

2025XRARVRMR ...

May 17, 2025 · 3 MR MR AR ...

DrMrMissMrsMs. \_

2 Mr. MisterMr Green Mr Smith.

3Miss. ...

VRARMR -

MRmixed Reality ARVR MR ...

MRAR -

MRAR MR AR ...

MRCT\_

Dec 11, 2024 · MRCTMR ...

2025XRARVRMR ...

May 17, 2025 · 3 MR MR ARAR ...

Mrsir -

1 Mr/Mrs/Miss,Sir: 2 sir" ...

“MC,MR,M+,M-”?

MCMR-M+20M ...

mr -

Jul 17, 2023 · mrmr117-610768844117-610768844, ...

**elo**mmr -

mmr elo mmr  
...

**Mr.Poker** -

2 days ago · 724 +10 +T0  
...

Explore our comprehensive Mr Heater Buddy parts diagram to easily identify and understand your heater's components. Learn more to keep your heater running smoothly!

[Back to Home](#)