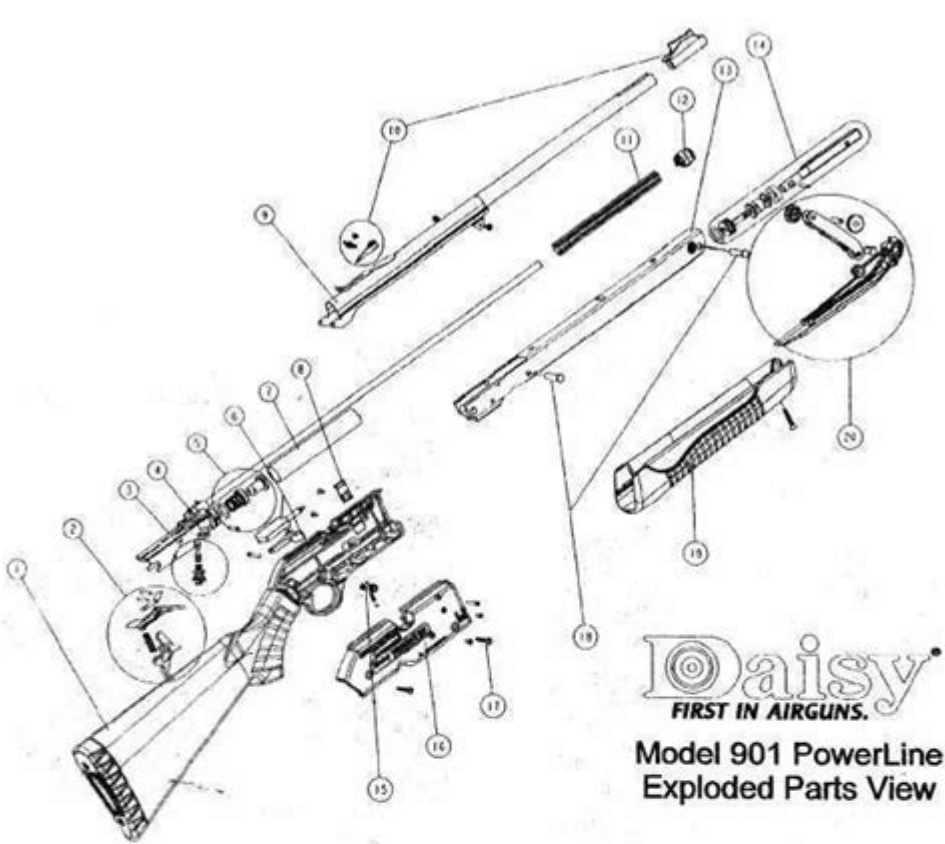


# Model Daisy Bb Gun Parts Diagram



Order Form

POWERLINE  
MODEL 901

How to Order: Parts should be identified by  
this sheet. There is a minimum order of \$2.00  
tance by check or money order. Sorry, but no  
parts. Prices are subject to change without nc

Key	Part N0.	Description	Quantity	Price ea
1	901S 169821-001	STOCK/LEFT RECEIVER		\$ 10.00
2	880TA 169352-K00	TRIGGER ASSEMBLY		\$ 2.50
3	880VA4 169439-000	VALVE ASSEMBLY		\$ 3.00
4	880VB4 169437-000	VALVE BODY/SHOT TUBE		\$ 12.00
5	880AC4 169362-K00	ABUTMENT CHAMBER SEAL KIT		\$ 3.50
6	880BHA 169762-K00	BOLT HANDLE ASSEMBLY		\$ 2.50
7	880PT4 154460-000	PUMP TUBE		\$ 2.50
8	880LD 152887-000	LOADING DOOR		\$ 0.50
9	901B 138405-100	BARREL		\$ 5.00
10	880SG 137970-000	SIGHT GROUP		\$ 1.75
11	901TBB 138389-000	TUBE BB		\$ 1.00
12	901MBS 138390-000	SUPPORT MID BARREL		\$ 1.00
13	880F 138035-100	RIGHT FOREARM		\$ 3.00
	138034-100	LEFT FOREARM		\$ 3.00
14	880PA4 169366-000	PUMP HEAD ASSEMBLY		\$ 3.50
15	880SAF 169838-K00	SAFETY GROUP		\$ 1.00
16	901RR 138386-001	RECEIVER RIGHT		\$ 3.50
17	901SA 154001-K00	SCREW ASSORTMENT		\$ 1.00
18	901P 132767-000	PIN FOR FRAME		\$ 0.25
19	901F 138387-001	FOREARM		\$ 3.00
20	901PLA 154002-K00	PUMP LEVER ASSEMBLY		\$ 4.00

Model Daisy BB gun parts diagram is an essential resource for anyone looking to understand, repair, or maintain their Daisy BB gun. These diagrams provide a visual representation of the various components that make up the BB gun, helping users identify parts, troubleshoot issues, and ensure proper assembly. In this article, we will explore the various parts of a typical Daisy BB gun, their

functions, and maintenance tips to keep your airgun in optimal working condition.

## Understanding the Daisy BB Gun

Daisy Outdoor Products has been a leading manufacturer of air guns and BB guns since 1886. Known for their quality and affordability, Daisy BB guns are popular among beginners and experienced shooters alike. Understanding the parts of a Daisy BB gun is crucial for maintenance and repairs.

### Key Components of a Daisy BB Gun

A typical Daisy BB gun consists of several critical components, each serving a specific purpose. Below is a breakdown of the primary parts:

#### 1. Barrel

- The barrel is the long metal tube through which BBs are fired. It is designed to provide accuracy and stability during shooting.

#### 2. Action

- The action refers to the mechanism that loads and fires the BBs. It can be either pump-action, lever-action, or semi-automatic, depending on the model.

#### 3. Stock

- The stock is the part of the gun that the shooter holds against their shoulder. It provides stability and control during shooting.

#### 4. Trigger

- The trigger is the mechanism that, when pulled, releases the BB and initiates the firing process.

#### 5. Sights

- Most Daisy BB guns come with iron sights, which help shooters aim accurately. Some models may include optics for better targeting.

#### 6. Safety Mechanism

- This feature prevents accidental discharge of the weapon and is an essential safety component of any BB gun.

#### 7. Magazine

- The magazine holds the BBs before they are fed into the firing chamber. Some models utilize a clip or rotary magazine.

#### 8. Coil Spring

- The coil spring is responsible for providing the necessary force to propel the BB out of the barrel.

#### 9. Compression Chamber

- In pneumatic models, this chamber compresses air to create pressure that propels the BB.

#### 10. Forearm

- The forearm is the part of the stock located just in front of the trigger. It provides a place for the shooter to grip the gun securely.

## Parts Diagram and Functionality

Understanding how each part functions is vital for troubleshooting and repairs. The model Daisy BB gun parts diagram illustrates the relationship between these components, making it easier to identify issues.

# Typical Parts Diagram Description

A typical parts diagram for a Daisy BB gun will include the following areas:

- Labeling of Parts: Each component is clearly labeled, allowing users to easily locate and identify parts.
- Exploded View: This feature shows how parts fit together, which is particularly useful during reassembly after repairs.
- Material Information: Some diagrams include material specifications for each part, which can be beneficial when sourcing replacements.

## Common Issues and Troubleshooting

Familiarity with the parts can help with diagnosing common issues. Here are some frequent problems and their potential solutions:

### 1. BB Jam

- Cause: Misalignment in the magazine or a faulty spring.
- Solution: Disassemble the magazine and clear any obstructions. Ensure the spring is functioning properly.

### 2. Inaccurate Shooting

- Cause: Dirty barrel or misaligned sights.
- Solution: Clean the barrel using a cleaning rod and patch. Adjust the sights as needed.

### 3. Air Leakage

- Cause: Worn seals or O-rings in pneumatic models.
- Solution: Inspect and replace any damaged seals. Lubricate moving parts for better performance.

#### 4. Trigger Issues

- Cause: Dirt or debris in the trigger mechanism.
- Solution: Clean around the trigger assembly and ensure it operates smoothly.

## Maintenance Tips for Your Daisy BB Gun

Regular maintenance is crucial to prolong the lifespan and performance of your Daisy BB gun. Here are some tips to keep your gun in top condition:

### Cleaning

- Barrel: Use a cleaning rod and patches to remove debris from the barrel. Regular cleaning prevents rust and improves accuracy.
- Exterior: Wipe down the exterior with a soft cloth to remove fingerprints and moisture.
- Action: Occasionally, apply a few drops of gun oil to the moving parts to keep them lubricated.

### Storage

- Avoid Humidity: Store your BB gun in a cool, dry place to prevent rust and corrosion.
- Use a Case: A protective case can safeguard against dust and accidental damage.
- Remove BBs: Always unload the magazine and store BBs separately from the gun.

### Regular Inspections

- Check for Wear: Regularly inspect O-rings, seals, and springs for signs of wear and replace them as needed.

- Function Test: Periodically perform a function test to ensure all parts are operating correctly.

## **Conclusion**

The model Daisy BB gun parts diagram serves as an invaluable tool for understanding how your BB gun operates. By familiarizing yourself with the various components and their functions, you can more easily troubleshoot issues and perform necessary maintenance. Whether you are a beginner or an experienced shooter, taking the time to learn about your Daisy BB gun will enhance your shooting experience and ensure your airgun remains a reliable companion for years to come.

In summary, the key to successful ownership of a Daisy BB gun lies in understanding its parts, performing regular maintenance, and utilizing the parts diagram for repairs and assembly. With the right knowledge and care, your Daisy BB gun can provide countless hours of enjoyment and skill development.

## **Frequently Asked Questions**

### **What is a model Daisy BB gun parts diagram used for?**

A model Daisy BB gun parts diagram is used to visually represent and identify the various components of the BB gun, aiding in assembly, disassembly, and maintenance.

### **Where can I find a parts diagram for my specific model of Daisy BB gun?**

You can find a parts diagram for your specific model of Daisy BB gun on the official Daisy website, through online gun forums, or by checking the user manual that came with your gun.

## **Are all Daisy BB gun models compatible with the same parts?**

No, Daisy BB gun models vary in design and specifications, so parts are typically not interchangeable between different models.

## **What should I do if I lose a part of my Daisy BB gun?**

If you lose a part of your Daisy BB gun, refer to the parts diagram to identify the specific part, then check with the manufacturer or authorized dealers for replacement options.

## **Can I repair my Daisy BB gun using a parts diagram?**

Yes, you can use a parts diagram to guide you through the repair process, helping you locate and replace damaged or worn parts.

## **Is there a way to download a parts diagram for Daisy BB guns?**

Yes, many manufacturers provide downloadable PDF versions of parts diagrams on their websites, or you can find them in online forums and support communities.

## **What tools do I need to work on my Daisy BB gun using the parts diagram?**

Common tools needed include screwdrivers, pliers, and possibly a small punch tool, depending on the specific parts you are working on as indicated in the parts diagram.

Find other PDF article:

<https://soc.up.edu.ph/24-mark/Book?ID=FcH14-5942&title=garden-worksheets-for-kindergarten.pdf>

## **[Model Daisy Bb Gun Parts Diagram](#)**

**model-kartei.de**

model-kartei.de – the most awesome website for models, photographers, make-up artists, and everybody who is into modeling and photography.

cursordeepseekAPI -

cursor 5 cursor cursor Models+Add Model ...

LM-studio -

LM-studio

Photos · model-kartei.de

Photos on model-kartei.de – all dscussions, uploads by friends, filtered for region or city.

“”

Jul 15, 2023 · Tesla Model 3 53%

-

2011 1 Tesla Model 3 53%

TransformerTransformer

2017GoogleTransformerBertT5ChatGPT LLaMa ...

Sedcards · model-kartei.de

The start page for all sedcards. You can either search for certain sedcards, or access additional sedcard functions.

-

SEM 1SEM SEM

Personal start page · model-kartei.de

The personal home page – a quick overview of your account as well as messages and updates.

model-kartei.de

model-kartei.de – the most awesome website for models, photographers, make-up artists, and everybody who is into modeling and photography.

cursordeepseekAPI

cursor 5 cursor cursor Models+Add Model deepseek-chat OpenAI API Key API Key Base URL Base URL api.deepseek.com api.deepseek.com ...

LM-studio -

LM-studio

Photos · model-kartei.de

Photos on model-kartei.de – all dscussions, uploads by friends, filtered for region or city.

“” ...

Jul 15, 2023 · Tesla Model 3 53%

-



