

# Mitosis Pogil Answer Key

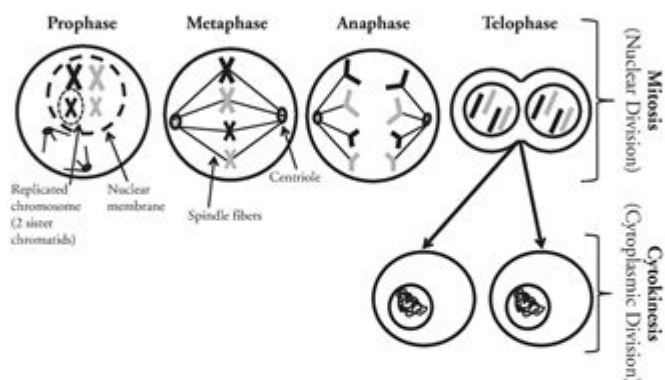
## Mitosis

How do living things grow and repair themselves?

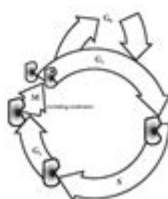
### Why?

Living things must grow and develop. At times they suffer injuries or damage, or cells simply wear out. New cells must be formed for the organism to survive. What process must occur to make a new, properly-functioning cell?

### Model 1 – Mitosis as Part of the Cell Cycle



1. Refer to Model 1. List the four phases in the mitosis process.
2. Where is mitosis in the cell cycle? Before \_\_\_\_\_ and after \_\_\_\_\_.
3. What three phases of the cell cycle are considered **interphase**?
4. Refer to the cell cycle shown.
  - a. How many cells are present at the beginning of mitosis?
  - b. How many cells are present at the end of mitosis?



Mitosis pogil answer key is an essential resource for students and educators alike, particularly in the field of biology. This tool is often utilized in classrooms to guide learners through the complex processes involved in cell division, specifically mitosis. By employing a Process-Oriented Guided Inquiry Learning (POGIL) approach, students can engage more deeply with the material, enabling a better understanding of the subject matter. This article delves into the intricacies of mitosis, the POGIL method, and how the answer key facilitates learning.

## Understanding Mitosis

Mitosis is a fundamental process for life, responsible for cell division and

the distribution of duplicated chromosomes to two daughter cells. It plays a critical role in growth, development, and tissue repair in multicellular organisms. The process can be broken down into distinct phases, each with specific events.

## Phases of Mitosis

The process of mitosis is typically divided into several phases:

### 1. Prophase

- Chromatin condenses into visible chromosomes.
- The nuclear envelope begins to break down.
- Spindle fibers emerge from the centrosomes.

### 2. Metaphase

- Chromosomes align at the cell's equatorial plane.
- Spindle fibers attach to the centromeres of the chromosomes.

### 3. Anaphase

- Sister chromatids are pulled apart toward opposite poles of the cell.
- The cell elongates in preparation for division.

### 4. Telophase

- Chromatids reach the poles and begin to de-condense back into chromatin.
- The nuclear envelope re-forms around each set of chromosomes.

### 5. Cytokinesis

- Although not a phase of mitosis itself, cytokinesis is the process that follows, where the cytoplasm divides, resulting in two distinct daughter cells.

Understanding these phases is crucial for grasping how cells reproduce and maintain genetic integrity.

## The POGIL Approach

POGIL stands for Process-Oriented Guided Inquiry Learning, a pedagogical approach that encourages active learning. In a POGIL classroom, students work in small groups, engaging in inquiry-based activities that lead them to discover concepts on their own, rather than passively receiving information from an instructor.

## Key Features of POGIL

The POGIL approach incorporates several key features that enhance learning:

- Collaborative Learning: Students work in pairs or small groups, allowing them to share ideas and learn from one another.
- Guided Inquiry: Carefully crafted questions guide students through the content, prompting them to think critically and make connections.
- Role Assignment: Each group member may take on a specific role (e.g., recorder, reporter, manager), fostering accountability and participation.

## **Benefits of Using POGIL in Biology**

1. Enhanced Understanding: Students develop a deeper understanding of biological concepts by actively engaging with the material.
2. Critical Thinking Skills: The inquiry-based nature of POGIL fosters critical thinking and problem-solving skills.
3. Peer Learning: Collaborative work allows students to learn from peers, enhancing their comprehension and retention.

## **The Role of the Mitosis POGIL Answer Key**

The mitosis pogil answer key serves as a valuable tool for both students and educators. It provides the correct answers to the questions posed in the POGIL activities, helping to reinforce learning and clarify misunderstandings.

## **How the Answer Key Facilitates Learning**

1. Self-Assessment: Students can use the answer key to assess their understanding and identify areas where they may need further study.
2. Teacher Reference: Educators can use the answer key to gauge student understanding and adjust their teaching strategies accordingly.
3. Discussion Starter: The answer key can serve as a basis for class discussions, allowing students to explore their thought processes and reasoning behind their answers.

## **Using the Answer Key Effectively**

To maximize the benefits of the mitosis pogil answer key, consider the following strategies:

- After Group Work: Use the answer key after group discussions to allow students to compare their answers and engage in a reflective conversation about differing viewpoints.
- Clarification Sessions: Hold sessions where students can bring questions stemming from the answer key to facilitate deeper understanding.

- Practice Assessments: Use the answer key as a resource for practice quizzes or tests to help students prepare for formal assessments.

## Challenges and Considerations

While the POGIL approach and the associated answer key offer many advantages, there are challenges to consider:

1. Varied Learning Paces: Not all students learn at the same pace, which can lead to frustration. Educators should be prepared to offer additional support.
2. Dependence on the Answer Key: Some students may become overly reliant on the answer key, hindering their ability to think critically and problem-solve independently.
3. Group Dynamics: The effectiveness of group work can be influenced by group dynamics. Educators should monitor groups to ensure that all voices are heard and that participation is equitable.

## Conclusion

In summary, the mitosis pogil answer key is a crucial resource that supports the learning process in biology education. By employing the POGIL approach, students gain a deeper understanding of mitosis and develop essential skills in critical thinking and collaboration. While challenges exist, with proper implementation and guidance, both educators and students can harness the benefits of this instructional strategy. As biology continues to evolve, tools like POGIL and the accompanying answer keys will remain vital in shaping the next generation of scientific thinkers.

## Frequently Asked Questions

### What is mitosis?

Mitosis is a process of cell division that results in two genetically identical daughter cells from a single parent cell.

### What are the main stages of mitosis?

The main stages of mitosis are prophase, metaphase, anaphase, and telophase.

### What role does the POGIL (Process Oriented Guided Inquiry Learning) approach play in understanding

## **mitosis?**

The POGIL approach encourages collaborative learning and active engagement with the material, helping students to better understand the mechanisms and stages of mitosis.

## **Why is it important to understand the mitosis process?**

Understanding mitosis is crucial for comprehending how cells replicate, which is fundamental to growth, development, and tissue repair in living organisms.

## **How can students effectively use the 'mitosis POGIL answer key'?**

Students can use the 'mitosis POGIL answer key' to verify their answers, understand the reasoning behind key concepts, and clarify any misconceptions about mitosis.

## **What are common misconceptions about mitosis?**

Common misconceptions include confusing mitosis with meiosis and misunderstanding the timing and significance of each stage in the cell cycle.

## **What is the purpose of the POGIL activities related to mitosis?**

The purpose of POGIL activities related to mitosis is to facilitate deeper understanding through guided inquiry, allowing students to explore concepts actively rather than passively receiving information.

## **How does mitosis differ from meiosis?**

Mitosis results in two identical daughter cells and is involved in growth and repair, while meiosis produces four genetically diverse gametes for sexual reproduction.

## **What resources can complement the 'mitosis POGIL answer key' for further study?**

Resources such as textbooks, online videos, interactive simulations, and peer discussions can complement the POGIL answer key for a more comprehensive understanding of mitosis.

Find other PDF article:

<https://soc.up.edu.ph/22-check/pdf?ID=XlE83-3015&title=food-presentation-and-garnishing-techniques.pdf>

# **Mitosis Pogil Answer Key**

Public health alert issued over ham salad: "Should be t...

The FSIS issued its public health alert for ham salad products containing breadcrumb products regulated by ...

## **USDA Announces Health Alert for Ready-To-Eat Ham Produc...**

1 day ago · The USDA has issued a public health alert for select ham salad products due to a potential Listeria ...

## **Health Alert Issued for This Popular Lunch Product - Parade**

18 hours ago · A health alert was just issued for ready-to-eat ham products. Here's what to know.

## **Health Alert issued for ham Salad products recalled for p...**

1 day ago · The U.S. Department of Agriculture's Food Safety and Inspection Service is issuing a public ...

## **USDA issues public health alert for ham salad products...**

1 day ago · CLEVELAND, Ohio - A public health alert for ham-salad products has been issued, according to the U.S. ...

## **Find 46+ Plumbers in Bedford | A Job Done Right | Checkatrade**

Look through 46 Plumbers working in Bedford for a range of plumbing services. Check out relevant tradespeople and book today.

## **Find the most trusted local Plumbers in Bedford | TrustATrader**

We have found a selection of the best, most reliable Plumbers in your area. You can click on a trader profile to find out more information, send email/SMS enquiry, or add them to your call back list.

## **Find Local Plumber in Putnoe - Rated People**

Find the best Plumber for your project in Putnoe. Browse our Plumber reviews and work photos on Rated People and get your free quotes today!

*Plumbers in Bedfordshire | Thomson Local*

Easily find contact details and reviews for local tradesmen in Bedfordshire. Check availability and request a quote today on Thomson Local.

## **AQUA HEATING & PLUMBING - Updated February 2025 - 70 Putnoe ... - Yelp**

Aqua Plumbing & Heating always offers high quality plumbing repairs along with excellent customer service. All our engineers are fully qualified & ACOP Card Holders.

## **Plumbing Bedford | Pronto Pumber | Electrician Bedford**

Pronto Plumber are based in Bedford and offer plumbing, heating, electrical and drainage services. If you need a plumber NOW...call us on 01234 347237.

*Plumbers Bedford Local Plumbing Company Bedford*

Our plumbing experts are fully qualified and experienced in all methods of plumbing for homes and businesses in Bedford. We put our customers' needs first, operating 24 hours a day, 7 days a ...

## The Best 20 Plumbers in Bedford, United Kingdom | WhoDoYou

Mar 25, 2014 · See the most recommended plumbers in Bedford, United Kingdom. Honest opinions shared by friends and neighbors. Want to find out who they refer?

### **iPlumb Bedford**

We offer expert solutions for all your plumbing needs, from quick fixes to comprehensive bathroom installations. Trust in our quality workmanship and commitment to customer satisfaction.

### **Barry Turner & Son Ltd, Bedford | Approved Plumbers**

Often, it is hard to find a plumber near you, particularly in the case of an emergency. Barry Turner & Son Ltd has been providing trusted, rated local plumbing services in and around Silsoe for over ...

Unlock the secrets of cell division with our comprehensive Mitosis POGIL answer key. Discover how to master this essential topic. Learn more now!

[Back to Home](#)