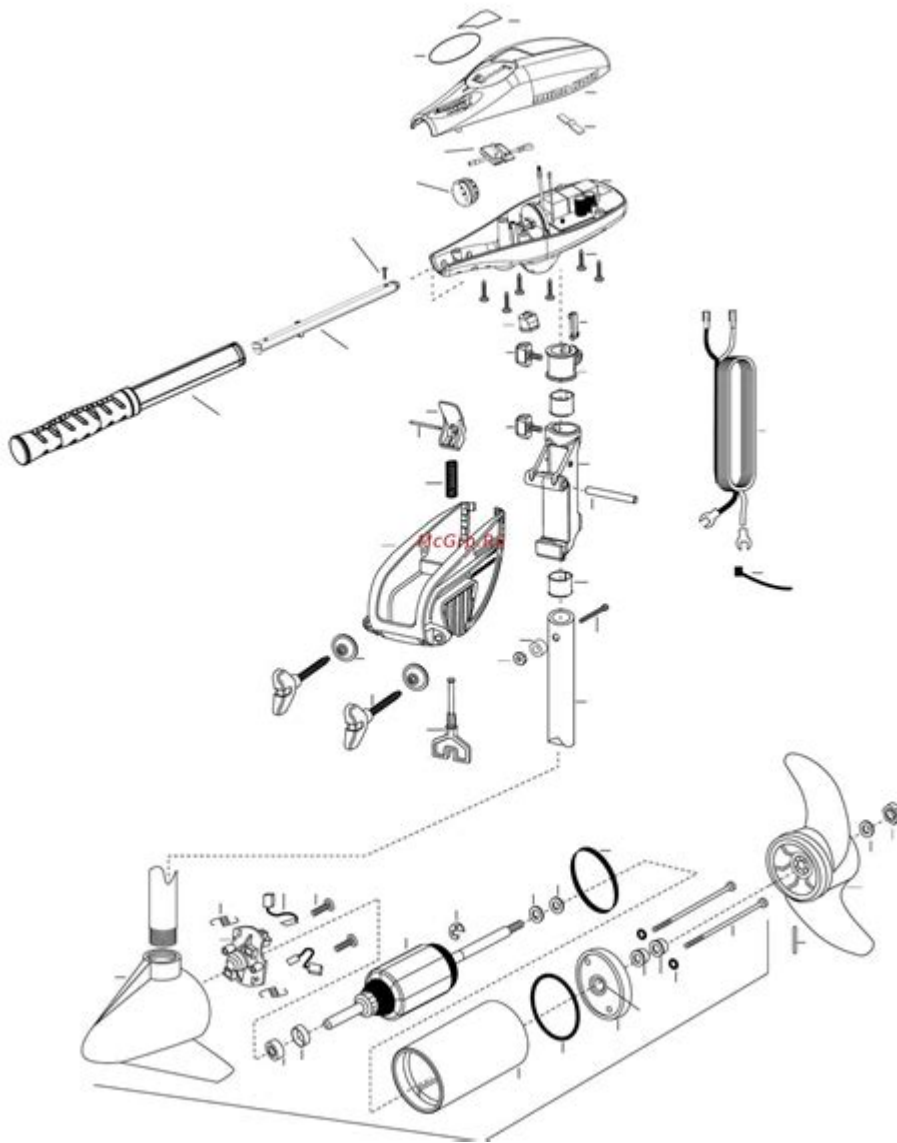


Minn Kota Riptide 70 Parts Diagram



MINN KOTA RIPTIDE 70 PARTS DIAGRAM IS AN ESSENTIAL TOOL FOR BOATERS AND ANGLERS WHO RELY ON ELECTRIC TROLLING MOTORS FOR THEIR FISHING ADVENTURES. UNDERSTANDING THE PARTS AND THEIR FUNCTIONS CAN SIGNIFICANTLY ENHANCE YOUR EXPERIENCE ON THE WATER, ENSURING THAT YOUR MOTOR OPERATES EFFECTIVELY AND EFFICIENTLY. THIS ARTICLE WILL EXPLORE THE VARIOUS COMPONENTS OF THE MINN KOTA RIPTIDE 70, PROVIDE A DETAILED PARTS DIAGRAM, AND OFFER INSIGHTS INTO MAINTENANCE AND TROUBLESHOOTING.

OVERVIEW OF THE MINN KOTA RIPTIDE 70

THE MINN KOTA RIPTIDE 70 IS A SALTWATER TROLLING MOTOR DESIGNED FOR DURABILITY AND PERFORMANCE. IT IS PART OF THE RIPTIDE SERIES, WHICH IS SPECIFICALLY ENGINEERED TO WITHSTAND CORROSIVE SALTWATER ENVIRONMENTS. THIS MODEL BOASTS FEATURES LIKE A POWERFUL THRUST, ADVANCED STEERING CAPABILITIES, AND AN ARRAY OF ACCESSORIES THAT ENHANCE ITS FUNCTIONALITY.

KEY FEATURES

- THRUST POWER: THE RIPTIDE 70 OFFERS 70 POUNDS OF THRUST, WHICH PROVIDES AMPLE POWER FOR MOST BOATING NEEDS.
- SALTWATER PROTECTION: THE MOTOR IS COATED WITH A CORROSION-RESISTANT FINISH AND INCLUDES STAINLESS STEEL HARDWARE TO ENSURE LONGEVITY IN SALTWATER CONDITIONS.
- QUIET OPERATION: THE MOTOR RUNS QUIETLY, WHICH IS A SIGNIFICANT ADVANTAGE FOR ANGLERS WHO NEED TO APPROACH FISH STEALTHILY.
- VARIABLE SPEED CONTROL: THE RIPTIDE 70 ALLOWS FOR PRECISE SPEED ADJUSTMENTS, MAKING IT EASIER TO NAVIGATE DIFFERENT WATER CONDITIONS.

UNDERSTANDING THE PARTS OF MINN KOTA RIPTIDE 70

TO EFFECTIVELY USE AND MAINTAIN YOUR MINN KOTA RIPTIDE 70, IT IS CRUCIAL TO HAVE A CLEAR UNDERSTANDING OF ITS VARIOUS PARTS. BELOW, WE WILL BREAK DOWN THE KEY COMPONENTS AND THEIR FUNCTIONS.

MAJOR COMPONENTS

1. MOTOR HEAD: THIS IS THE TOP PART OF THE TROLLING MOTOR THAT HOUSES THE CONTROL CIRCUITRY AND THE PROPELLER SYSTEM.
2. SHAFT: THE SHAFT CONNECTS THE MOTOR HEAD TO THE PROPELLER AND IS AVAILABLE IN DIFFERENT LENGTHS TO SUIT VARIOUS BOAT SIZES.
3. PROPELLER: THE PROPELLER CONVERTS THE MOTOR'S ROTATIONAL ENERGY INTO THRUST, PROPELLING THE BOAT FORWARD OR BACKWARD.
4. MOUNTING BRACKET: THIS COMPONENT SECURES THE MOTOR TO THE BOAT AND ALLOWS FOR QUICK REMOVAL AND INSTALLATION.
5. STEERING SYSTEM: THE STEERING SYSTEM PROVIDES DIRECTIONAL CONTROL, ALLOWING THE OPERATOR TO MANEUVER THE BOAT EFFICIENTLY.
6. POWER SUPPLY: THE MOTOR REQUIRES A BATTERY FOR OPERATION, AND UNDERSTANDING THE POWER SUPPLY SYSTEM IS ESSENTIAL FOR OPTIMAL PERFORMANCE.
7. CONTROL PANEL: THIS AREA INCLUDES THE THROTTLE AND SPEED CONTROL, PROVIDING AN INTERFACE FOR THE USER TO OPERATE THE MOTOR.

PARTS DIAGRAM OF MINN KOTA RIPTIDE 70

A PARTS DIAGRAM IS INVALUABLE FOR ANY USER LOOKING TO UNDERSTAND THE ASSEMBLY AND FUNCTIONALITY OF THE MINN KOTA RIPTIDE 70. BELOW IS A SIMPLIFIED DESCRIPTION OF THE PARTS LAYOUT:

1. MOTOR HEAD ASSEMBLY
 - CONTROL BOARD
 - SPEED CONTROL
 - CABLE CONNECTIONS
2. SHAFT ASSEMBLY
 - UPPER SHAFT
 - LOWER SHAFT
 - PIVOT BRACKET
3. PROPELLER ASSEMBLY
 - PROPELLER BLADES
 - PROPELLER HUB
 - LOCKNUT

4. MOUNTING BRACKET ASSEMBLY

- BRACKET ARMS
- LOCKING MECHANISM
- MOUNTING SCREWS

5. STEERING SYSTEM COMPONENTS

- STEERING CABLE
- HANDLE
- FOOT PEDAL (IF APPLICABLE)

6. POWER SUPPLY COMPONENTS

- BATTERY TERMINALS
- WIRING HARNESS
- FUSE HOLDER

MAINTENANCE OF THE MINN KOTA RIPTIDE 70

REGULAR MAINTENANCE IS CRUCIAL FOR ENSURING THE LONGEVITY AND PERFORMANCE OF YOUR MINN KOTA RIPTIDE 70. HERE ARE SOME ESSENTIAL MAINTENANCE TIPS:

ROUTINE CHECKS

- INSPECT THE PROPELLER: REGULARLY CHECK THE PROPELLER FOR ANY SIGNS OF DAMAGE OR DEBRIS. CLEAN OR REPLACE AS NECESSARY.
- EXAMINE THE SHAFT: LOOK FOR SIGNS OF CORROSION OR WEAR. LUBRICATE THE SHAFT PERIODICALLY TO PREVENT RUST.
- CHECK ELECTRICAL CONNECTIONS: ENSURE THAT ALL WIRING AND CONNECTIONS ARE SECURE AND FREE FROM CORROSION.
- BATTERY MAINTENANCE: KEEP THE BATTERY CHARGED AND INSPECT THE TERMINALS FOR ANY SIGNS OF CORROSION.

CLEANING AND STORAGE

- RINSE AFTER USE: AFTER USING THE MOTOR IN SALTWATER, RINSE IT THOROUGHLY WITH FRESH WATER TO REMOVE SALT DEPOSITS.
- STORE PROPERLY: WHEN NOT IN USE, STORE THE MOTOR IN A COOL, DRY PLACE, AWAY FROM DIRECT SUNLIGHT. REMOVE THE BATTERY IF POSSIBLE.

TROUBLESHOOTING COMMON ISSUES

EVEN WITH PROPER MAINTENANCE, ISSUES MAY ARISE WITH THE MINN KOTA RIPTIDE 70. HERE ARE SOME COMMON PROBLEMS AND THEIR POTENTIAL SOLUTIONS:

PROBLEM: MOTOR NOT RUNNING

- CHECK POWER SUPPLY: ENSURE THE BATTERY IS CHARGED AND CONNECTIONS ARE SECURE.
- INSPECT THE FUSES: CHECK FOR BLOWN FUSES AND REPLACE THEM AS NECESSARY.

PROBLEM: POOR PERFORMANCE OR THRUST

- CLEAN THE PROPELLER: REMOVE ANY DEBRIS THAT MIGHT BE OBSTRUCTING THE PROPELLER.
- CHECK FOR DAMAGE: INSPECT THE PROPELLER FOR CRACKS OR BENDS AND REPLACE IF NECESSARY.

PROBLEM: STEERING ISSUES

- INSPECT STEERING CABLES: CHECK FOR ANY FRAYING OR DAMAGE TO THE CABLES.
- LUBRICATE MOVING PARTS: ENSURE THE STEERING MECHANISM IS WELL-LUBRICATED FOR SMOOTH OPERATION.

CONCLUSION

UNDERSTANDING THE **MINN KOTA RIPTIDE 70 PARTS DIAGRAM** IS CRUCIAL FOR ANY ANGLER OR BOATER WHO WANTS TO MAXIMIZE THEIR EXPERIENCE ON THE WATER. BY FAMILIARIZING YOURSELF WITH THE MOTOR'S COMPONENTS, YOU CAN ENSURE PROPER MAINTENANCE, TROUBLESHOOT COMMON ISSUES, AND ENJOY MANY SUCCESSFUL FISHING TRIPS. REGULAR CARE AND UNDERSTANDING OF YOUR EQUIPMENT WILL NOT ONLY ENHANCE PERFORMANCE BUT ALSO EXTEND THE LIFESPAN OF YOUR TROLLING MOTOR. WHETHER YOU ARE A SEASONED PRO OR A NOVICE ANGLER, KNOWLEDGE OF YOUR MINN KOTA RIPTIDE 70 IS A KEY INGREDIENT FOR SUCCESS.

FREQUENTLY ASKED QUESTIONS

WHAT IS THE PURPOSE OF THE MINN KOTA RIPTIDE 70 PARTS DIAGRAM?

THE PARTS DIAGRAM FOR THE MINN KOTA RIPTIDE 70 PROVIDES A VISUAL REPRESENTATION OF ALL COMPONENTS, HELPING USERS IDENTIFY AND LOCATE SPECIFIC PARTS FOR MAINTENANCE OR REPAIRS.

WHERE CAN I FIND THE MINN KOTA RIPTIDE 70 PARTS DIAGRAM?

YOU CAN FIND THE PARTS DIAGRAM FOR THE MINN KOTA RIPTIDE 70 ON THE OFFICIAL MINN KOTA WEBSITE, IN THE PRODUCT MANUAL, OR THROUGH AUTHORIZED RETAILERS AND SERVICE CENTERS.

ARE THERE COMMON REPLACEMENT PARTS LISTED IN THE RIPTIDE 70 PARTS DIAGRAM?

YES, THE PARTS DIAGRAM TYPICALLY INCLUDES COMMON REPLACEMENT PARTS SUCH AS THE PROPELLER, MOTOR HOUSING, WIRING HARNESS, AND CONTROL BOARD.

HOW CAN I USE THE PARTS DIAGRAM TO TROUBLESHOOT MY MINN KOTA RIPTIDE 70?

YOU CAN USE THE PARTS DIAGRAM TO IDENTIFY SPECIFIC COMPONENTS THAT MAY BE MALFUNCTIONING, ALLOWING YOU TO ISOLATE THE PROBLEM AND DETERMINE WHICH PARTS NEED REPAIR OR REPLACEMENT.

IS THE PARTS DIAGRAM FOR THE MINN KOTA RIPTIDE 70 THE SAME AS OTHER MINN KOTA MODELS?

NO, EACH MINN KOTA MODEL HAS ITS OWN SPECIFIC PARTS DIAGRAM DUE TO DIFFERENCES IN DESIGN AND COMPONENTS, SO IT'S IMPORTANT TO USE THE CORRECT DIAGRAM FOR YOUR MODEL.

CAN I ORDER PARTS DIRECTLY FROM THE RIPTIDE 70 PARTS DIAGRAM?

WHILE THE PARTS DIAGRAM SHOWS WHAT COMPONENTS ARE AVAILABLE, YOU TYPICALLY NEED TO ORDER PARTS THROUGH

AUTHORIZED DEALERS OR THE OFFICIAL MINN KOTA PARTS STORE.

WHAT SHOULD I DO IF I CAN'T FIND THE PARTS DIAGRAM FOR MY RIPTIDE 70?

IF YOU CAN'T FIND THE PARTS DIAGRAM, TRY CONTACTING MINN KOTA CUSTOMER SUPPORT OR VISITING A LOCAL DEALER FOR ASSISTANCE IN OBTAINING THE CORRECT DIAGRAM.

DOES THE PARTS DIAGRAM INCLUDE INSTALLATION INSTRUCTIONS?

THE PARTS DIAGRAM ITSELF USUALLY DOES NOT INCLUDE INSTALLATION INSTRUCTIONS, BUT IT CAN BE PAIRED WITH THE OWNER'S MANUAL, WHICH TYPICALLY PROVIDES GUIDANCE ON HOW TO INSTALL OR REPLACE PARTS.

ARE THERE ONLINE FORUMS WHERE I CAN DISCUSS ISSUES RELATED TO THE RIPTIDE 70 PARTS DIAGRAM?

YES, THERE ARE ONLINE FORUMS AND COMMUNITIES, SUCH AS BOATING AND FISHING FORUMS, WHERE USERS DISCUSS ISSUES AND SHARE INFORMATION REGARDING THE MINN KOTA RIPTIDE 70 AND ITS PARTS DIAGRAM.

Find other PDF article:

<https://soc.up.edu.ph/52-snap/Book?dataid=tPH58-9251&title=sat-math-no-calculator.pdf>

[Minn Kota Riptide 70 Parts Diagram](#)

Vikings Official Team Website | Minnesota Vikings - vikings.com

Minnesota Vikings Home: The official source of Vikings videos, news, headlines, photos, tickets, roster, gameday information and schedule

Minnesota Vikings 2025 Schedule

Minnesota Vikings Current 2025 Schedule: The official source of the latest Vikings regular season and preseason schedule

2025 Minnesota Vikings NFL Draft Picks - vikings.com

2025 Minnesota Vikings Draft PicksGo behind-the-scenes during the Vikings 2025 NFL Draft process with General Manager Kwesi Adodo-Mensah, Head Coach Kevin O'Connell, and ...

2025 Training Camp | Minnesota Vikings - vikings.com

Join the Minnesota Vikings at Twin Cities Orthopedics Performance Center for 2025 Vikings Training Camp presented by Omni Viking Lakes! Get the first look at the 2025 Vikings on the ...

Vikings Latest News | News Home | Minnesota Vikings - vikings.com

Feb 20, 2025 · Minnesota Vikings latest news, headlines, rosters transactions, injury updates, key matchups, stories, player features and more

[Latest Videos | Videos Home | Minnesota Vikings - vikings.com](#)

Minnesota Vikings latest videos including game highlights, press conferences, Vikings Entertainment Network video series, NFL Network clips and more

[*2025 Vikings Schedule, Tickets, Opponents*](#)

May 16, 2025 · EAGAN, Minn. — The historic duo of international games for the Minnesota Vikings isn't the team's only double dip in 2025.

[*Vikings Announce 40 Players Have Reported for 2025 Training ...*](#)

Jul 20, 2025 · EAGAN – The Minnesota Vikings on Sunday announced the following 40 players (listed alphabetically) have reported to Twin Cities Orthopedics Performance Center for 2025 ...

[Vikings Roster | Minnesota Vikings - vikings.com](#)

Minnesota Vikings Roster Player RosterActive/Physically Unable to Perform

[*Minnesota Vikings Coverage | Watch - vikings.com.com*](#)

Minnesota Vikings Coverage: Tune in to watch Minnesota Vikings games throughout the season.

[Vikings Official Team Website | Minnesota Vikings - vikings.com](#)

Minnesota Vikings Home: The official source of Vikings videos, news, headlines, photos, tickets, roster, gameday information and schedule

Minnesota Vikings 2025 Schedule

Minnesota Vikings Current 2025 Schedule: The official source of the latest Vikings regular season and preseason schedule

2025 Minnesota Vikings NFL Draft Picks - vikings.com

2025 Minnesota Vikings Draft PicksGo behind-the-scenes during the Vikings 2025 NFL Draft process with General Manager Kwesi Adodo-Mensah, Head Coach Kevin O'Connell, and ...

2025 Training Camp | Minnesota Vikings - vikings.com

Join the Minnesota Vikings at Twin Cities Orthopedics Performance Center for 2025 Vikings Training Camp presented by Omni Viking Lakes! Get the first look at the 2025 Vikings on the ...

[Vikings Latest News | News Home | Minnesota Vikings - vikings.com](#)

Feb 20, 2025 · Minnesota Vikings latest news, headlines, rosters transactions, injury updates, key matchups, stories, player features and more

Latest Videos | Videos Home | Minnesota Vikings - vikings.com

Minnesota Vikings latest videos including game highlights, press conferences, Vikings Entertainment Network video series, NFL Network clips and more

[2025 Vikings Schedule, Tickets, Opponents](#)

May 16, 2025 · EAGAN, Minn. — The historic duo of international games for the Minnesota Vikings isn't the team's only double dip in 2025.

Vikings Announce 40 Players Have Reported for 2025 Training Camp

Jul 20, 2025 · EAGAN – The Minnesota Vikings on Sunday announced the following 40 players (listed alphabetically) have reported to Twin Cities Orthopedics Performance Center for 2025 ...

[*Vikings Roster | Minnesota Vikings - vikings.com*](#)

Minnesota Vikings Roster Player RosterActive/Physically Unable to Perform

Minnesota Vikings Coverage | Watch - vikings.com.com

Minnesota Vikings Coverage: Tune in to watch Minnesota Vikings games throughout the season.

Explore the complete Minn Kota Riptide 70 parts diagram to identify components and enhance your setup. Learn more about maintenance and upgrades today!

[Back to Home](#)