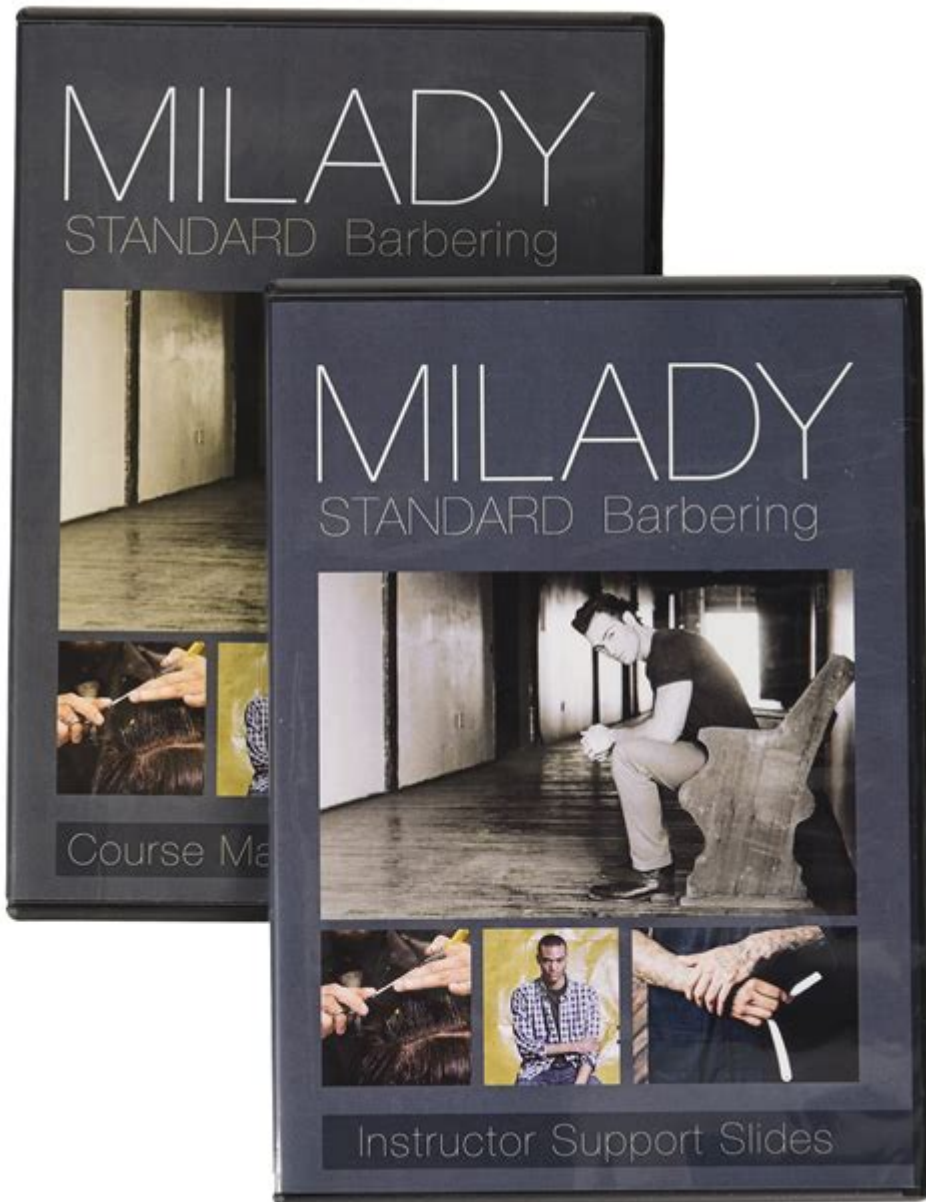


# Milady Standard Theory Work Course Management Guide



## Milady Standard Theory Work Course Management Guide

The Milady Standard Theory Work Course Management Guide is an essential resource for educators and students in the beauty and wellness industry. It provides a structured approach to managing educational programs effectively, ensuring that both instructors and learners achieve their objectives in a coherent and organized manner. This guide serves as a roadmap for teaching and learning, offering methodologies to enhance the educational experience while preparing students for successful careers in cosmetology, aesthetics, nail technology, and related fields.

# Understanding the Milady Standard

The Milady Standard is a comprehensive curriculum that covers various aspects of beauty and wellness education. It is widely recognized in the cosmetology industry and is used in many beauty schools across the United States and beyond. The content is designed to meet state licensing requirements while also equipping students with practical skills and theoretical knowledge.

## Key Components of the Milady Standard

1. Curriculum Structure: The curriculum is organized into modules that cover different topics, including hair care, skin care, makeup application, and nail technology. Each module includes theoretical knowledge, practical applications, and assessment criteria.
2. Learning Objectives: Each module specifies clear learning objectives, which help instructors focus on the most critical areas of knowledge and skills that students need to acquire.
3. Assessment Tools: The guide includes various assessment tools, such as quizzes, exams, and practical evaluations, to measure student progress and comprehension.
4. Resource Materials: It provides supplementary materials, including textbooks, videos, and online resources, to support both teaching and learning processes.

## Course Management Strategies

Effective course management is crucial for enhancing the learning experience. The following strategies can help educators optimize their teaching methods and ensure student success.

### 1. Lesson Planning

Creating a well-structured lesson plan is fundamental for effective teaching. Each lesson should include the following elements:

- Learning Objectives: Clearly defined goals for what students should achieve by the end of the lesson.
- Materials Needed: A list of supplies and resources required for the lesson.
- Instructional Methods: A description of the teaching strategies and

techniques that will be employed (e.g., lectures, demonstrations, hands-on practice).

- **Assessment Methods:** Plans for evaluating student understanding and skill acquisition.

## **2. Time Management**

Time management is essential in maintaining a productive classroom environment. Here are tips to manage time effectively:

- **Create a Schedule:** Develop a course calendar that outlines when each module will be covered, including time for assessments and practical workshops.
- **Set Time Limits:** Allocate specific time frames for each section of the lesson to ensure that all material is covered without rushing.
- **Monitor Class Progress:** Regularly assess whether the class is on track with the schedule, making adjustments as necessary.

## **3. Student Engagement**

Engaging students is critical for fostering a positive learning environment. Consider these strategies:

- **Interactive Learning:** Incorporate group activities, discussions, and hands-on practice to keep students actively involved.
- **Real-World Applications:** Relate theoretical concepts to practical scenarios in the beauty industry to help students understand the relevance of their studies.
- **Feedback Mechanism:** Encourage students to provide feedback on lessons and activities, allowing for continuous improvement in teaching methods.

## **4. Utilizing Technology**

Incorporating technology into the classroom can enhance the learning experience. Some ways to do this include:

- **Online Resources:** Use online platforms for supplementary learning materials, including videos, tutorials, and interactive quizzes.
- **Digital Assessments:** Implement online assessments to streamline grading and provide immediate feedback.

- Virtual Classes: Utilize video conferencing tools to conduct lessons when in-person classes are not feasible.

## **Assessing Student Performance**

Assessment is a critical component of any educational program. It allows instructors to determine whether students are meeting learning objectives and where they may need additional support.

### **1. Types of Assessments**

Different types of assessments can be used to gauge student understanding:

- Formative Assessments: Ongoing assessments that occur during the learning process, such as quizzes and in-class activities.
- Summative Assessments: Comprehensive evaluations conducted at the end of a module or course, such as final exams or practical evaluations.
- Peer Assessments: Opportunities for students to evaluate each other's work, fostering collaboration and critical thinking.

### **2. Grading Criteria**

Establishing clear grading criteria is essential for ensuring fairness and transparency in assessments. Consider the following:

- Rubrics: Develop rubrics that outline specific expectations for assignments and practical evaluations.
- Weighting: Assign different weights to various components of the course (e.g., exams, projects, participation) to reflect their importance.
- Feedback: Provide constructive feedback on assessments to guide students in their learning and improvement.

## **Supporting Student Success**

A supportive environment is key to student success. Educators should implement strategies that foster growth and development.

# 1. Mentorship and Guidance

Offering mentorship can significantly impact student motivation and performance. Consider these approaches:

- Individual Meetings: Schedule one-on-one meetings with students to discuss their progress and address any concerns.
- Career Counseling: Provide resources and guidance on career opportunities in the beauty industry to help students plan for their futures.

# 2. Resources for Additional Support

Make sure students have access to various resources that can aid their learning:

- Tutoring Services: Offer tutoring for students who may be struggling with specific concepts or skills.
- Study Groups: Encourage the formation of study groups for peer support and collaborative learning.
- Online Forums: Create online discussion boards where students can ask questions and share insights.

# Conclusion

The Milady Standard Theory Work Course Management Guide is a vital tool for educators in the beauty and wellness industry. By adopting effective course management strategies, assessing student performance, and providing a supportive environment, instructors can enhance the educational experience for their students. The ultimate goal is to prepare students for successful careers, equipping them with the skills and knowledge needed to excel in the dynamic and ever-evolving beauty industry. Through careful planning and execution, educators can ensure that their courses are engaging, informative, and impactful.

# Frequently Asked Questions

## What is the Milady Standard Theory Work Course Management Guide?

The Milady Standard Theory Work Course Management Guide is a comprehensive

resource designed for educators and trainers in the beauty and cosmetology fields. It provides structured lesson plans, assessment tools, and instructional strategies to effectively teach theory concepts related to beauty and personal care.

## **How does the Milady Standard Theory Work Course Management Guide benefit instructors?**

Instructors benefit from the guide through its organized curriculum, which saves time in lesson planning and provides clarity on essential topics. It also includes classroom management techniques and assessment methods to evaluate student understanding effectively.

## **What types of topics are covered in the Milady Standard Theory Work Course Management Guide?**

The guide covers a wide range of topics including fundamentals of beauty theory, anatomy and physiology, hair coloring techniques, skin care, makeup application, and salon management, ensuring a well-rounded education for students.

## **Is the Milady Standard Theory Work Course Management Guide suitable for online learning?**

Yes, the guide is suitable for online learning as it includes digital resources and adaptable lesson plans that can be easily implemented in virtual classrooms, making it a flexible option for modern educational environments.

## **How can students utilize the Milady Standard Theory Work Course Management Guide for self-study?**

Students can use the guide for self-study by following its structured content, completing practice assessments, and utilizing the end-of-chapter reviews to reinforce their understanding of key concepts and prepare for exams.

## **What are the latest updates in the Milady Standard Theory Work Course Management Guide?**

The latest updates in the guide include enhanced digital resources, updated content reflecting current industry standards, and new assessment tools that align with recent advancements in beauty and cosmetology education.

Find other PDF article:

<https://soc.up.edu.ph/26-share/Book?trackid=JtQ09-7486&title=harry-wong-procedures-and-routines.pdf>

# Milady Standard Theory Work Course Management Guide

## **Milady oder Mylady? - Sprachlabor: Englisch ⇌ Deutsch Forum**

Aug 28, 2007 · LEO.org: Ihr Wörterbuch im Internet für Englisch-Deutsch Übersetzungen, mit Forum, Vokabeltrainer und Sprachkursen. Natürlich auch als App.

## **Origin of "milady" - English Language & Usage Stack Exchange**

Sep 22, 2011 · Yes, milady comes from "my lady". Milady (from my lady) is an English term of address to a noble woman. It is the female form of milord. And here's some background on ...

## **my lady m'lady milady** milady - milady

my lady milady m'lady my lady dunno ain't no ...

## **My Lady** - my lady

my lady m'lady milady "milady" / "m'lady" ...

## -

/ / Les Trois Mousquetaires: Milady / The Three Musketeers: Milady (2023) ...

## *single word requests - Respectful alternative to "Madam" - English ...*

Sep 25, 2011 · Madam is the word to call a woman with respect. ( Though of course it has other meanings, too). Are there any other words used to call a woman with respect?

## -

Charles de Batz-Castelmore d'Artagnan 17 ...

## Akid -

2.21 milady

## **Origin of "one man's trash is another man's treasure"**

Mar 7, 2012 · This might be tough considering the gesture is iterated so many ways, but it's worth a shot. What is the origin of the expression one man's trash is another man's treasure?

## *phrases - How is "but of course" different to just "of course ...*

Sep 27, 2016 · Both expressions are responses to a question or comment from a third party. They are both saying that the answer should be obvious to the questioner. The "but" just adds ...

## **Milady oder Mylady? - Sprachlabor: Englisch ⇌ Deutsch Forum**

Aug 28, 2007 · LEO.org: Ihr Wörterbuch im Internet für Englisch-Deutsch Übersetzungen, mit Forum, Vokabeltrainer und Sprachkursen. Natürlich auch als App.

## *Origin of "milady" - English Language & Usage Stack Exchange*

Sep 22, 2011 · Yes, milady comes from "my lady". Milady (from my lady) is an English term of

